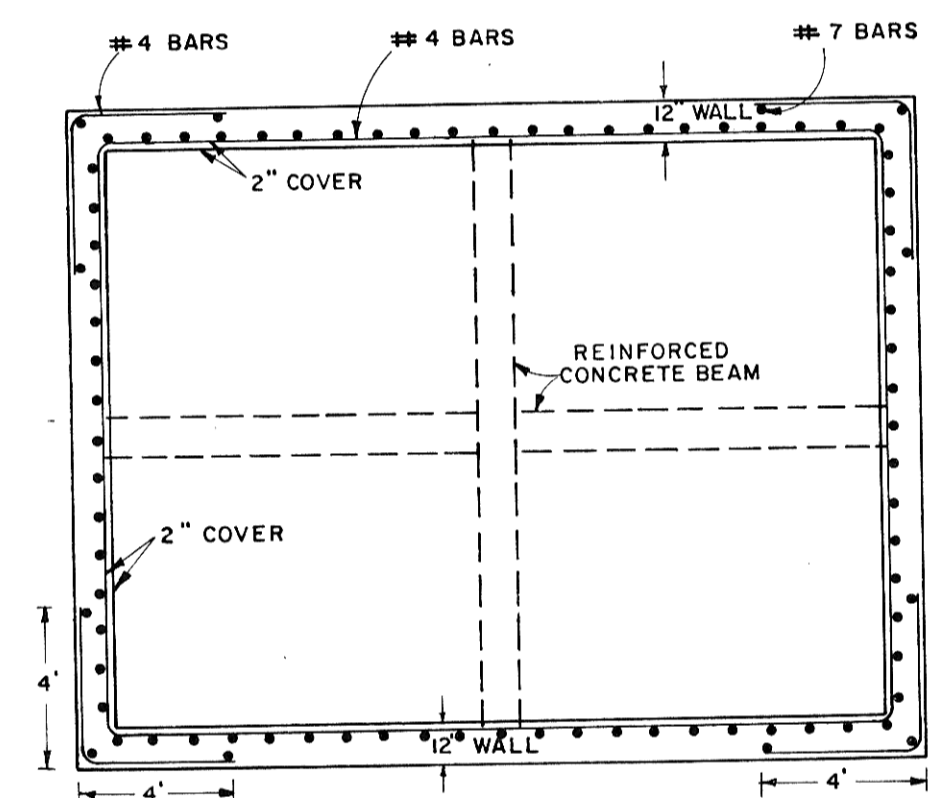
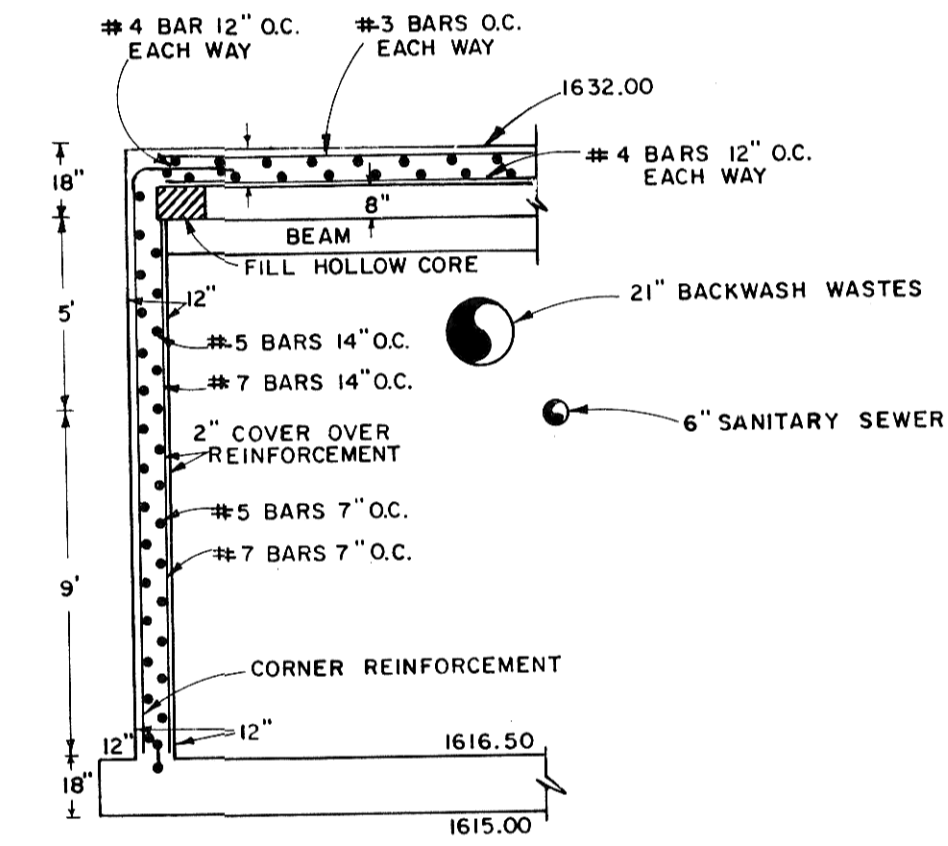


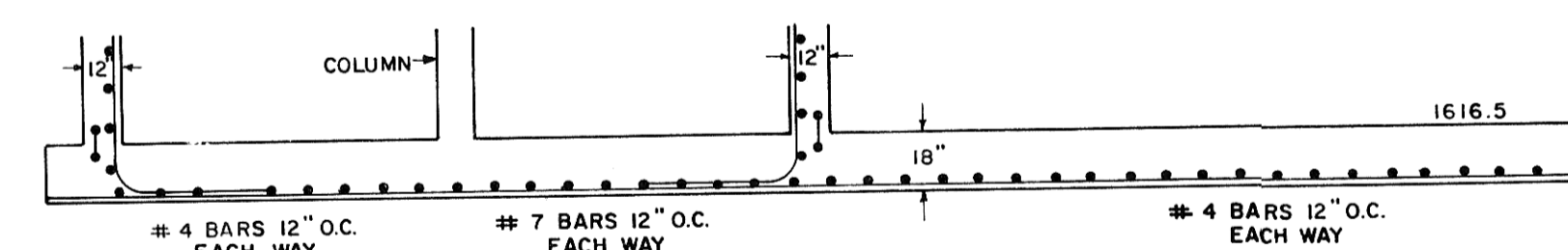
PLAN VIEW
SCALE: 1" = 5'



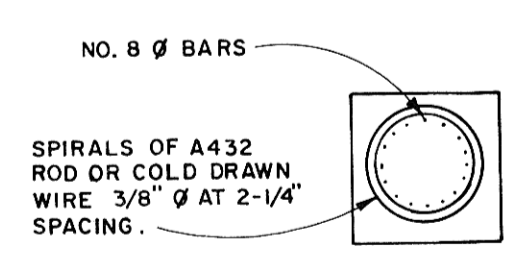
WALL REINFORCEMENT DETAIL
SCALE: 1" = 5'



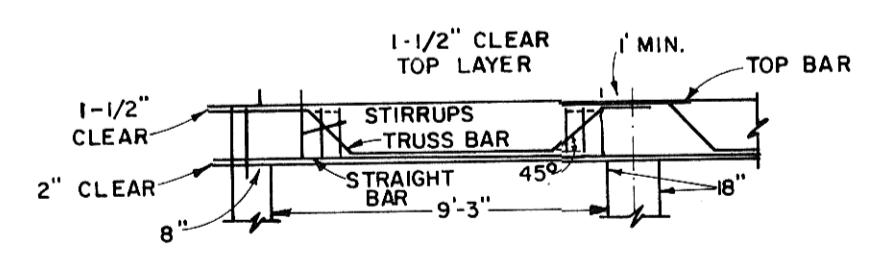
WALL & ROOF DETAIL
SCALE: 1" = 5'



FLOOR REINFORCEMENT DETAIL
SCALE: 1" = 5'



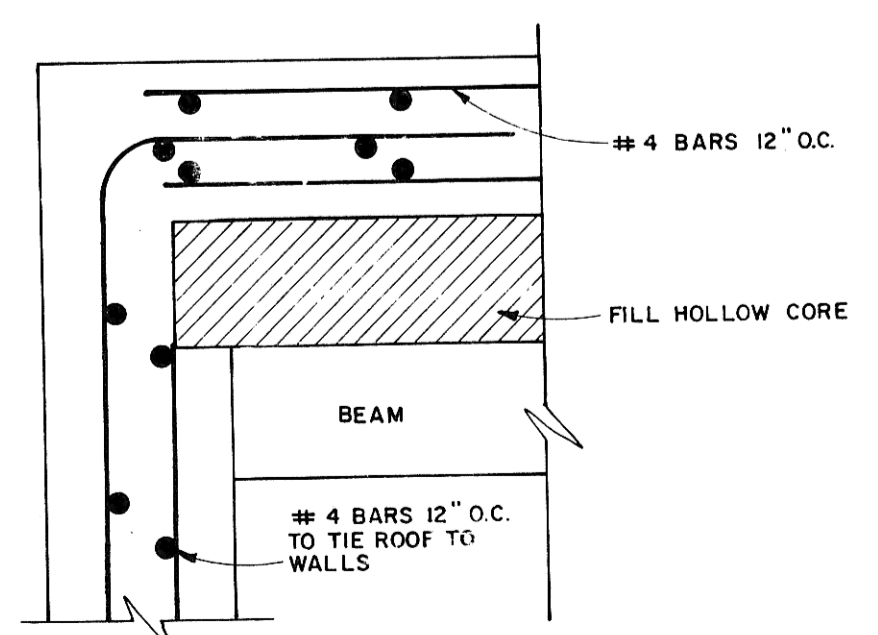
COLUMN DETAIL
NO SCALE



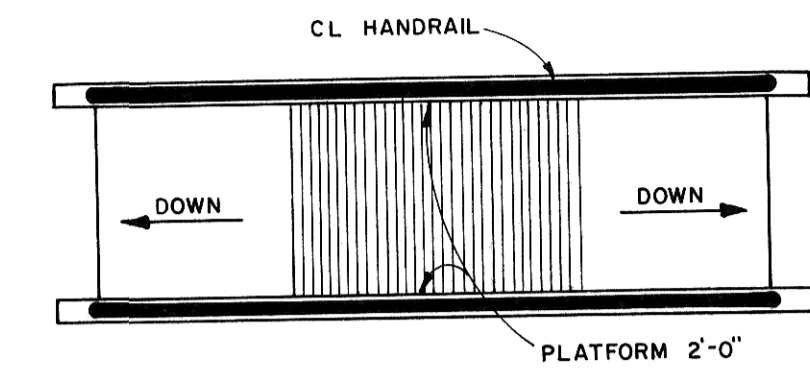
REINFORCED CONCRETE BEAM DETAIL
NO SCALE

NOTE:
ALL CORNERS TO BE
DOUBLE REINFORCED
AS SHOWN.

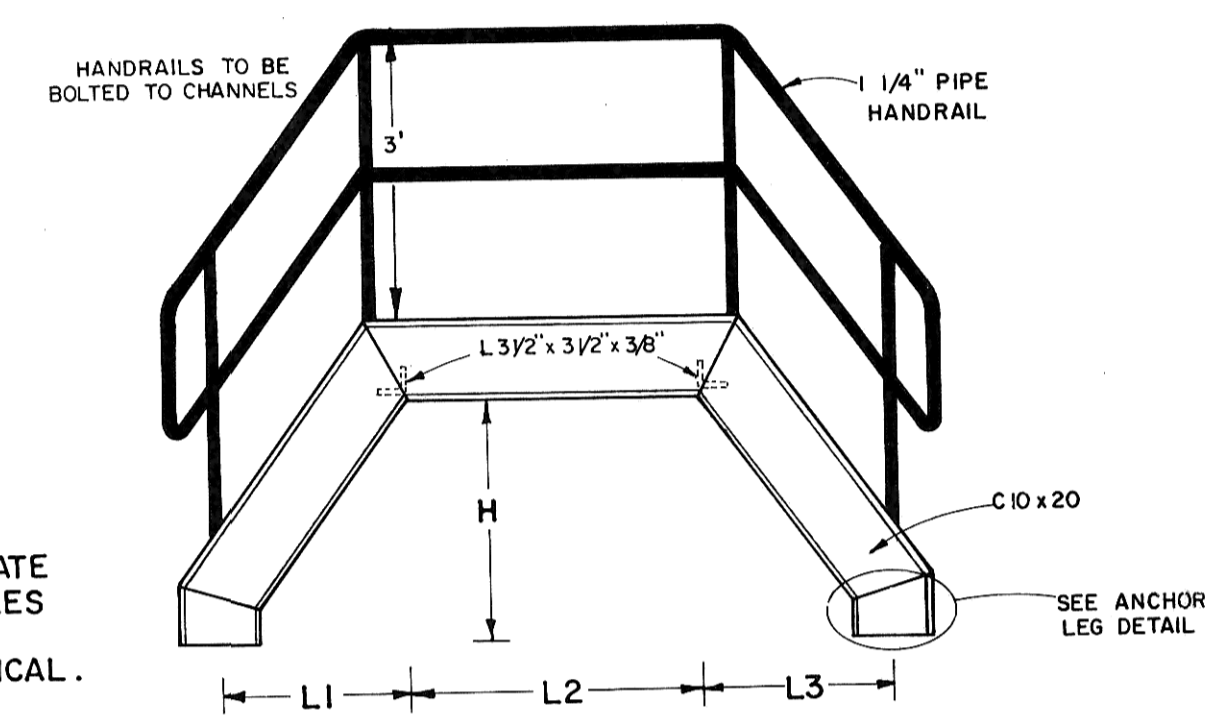
DETAIL - A
SCALE: 1" = 1'



CROSSOVER PLATFORMS



PLAN VIEW
SCALE: 1" = 2'

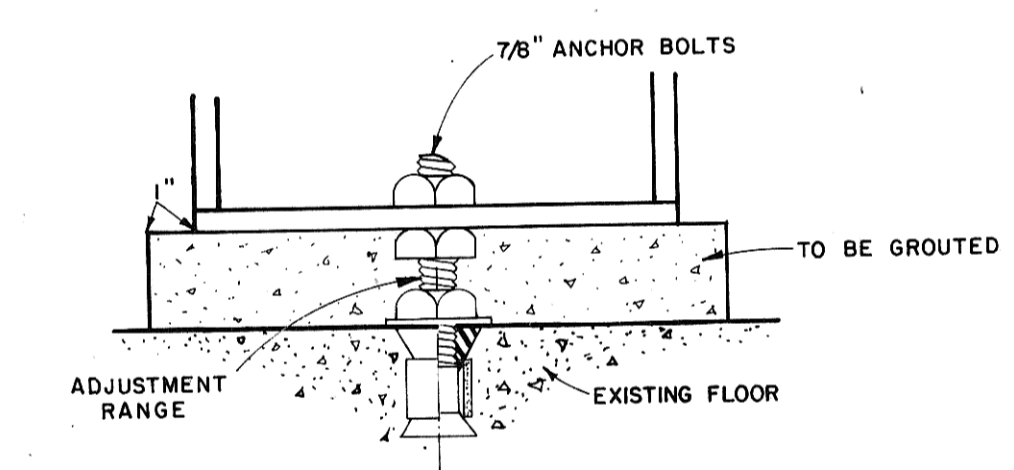


ELEVATION VIEW
SCALE: 1" = 2'

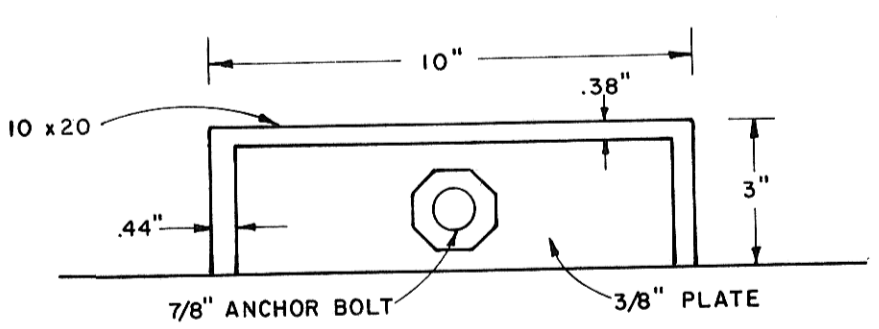
CROSSOVER NUMBER	L1	L2	L3	H
CO. 1	2'-0"	3'-0"	2'-0"	2'-6"
CO. 2	2'-0"	4'-0"	2'-0"	3'-3"

L2 = CLEAR WIDTH
H = CLEAR HEIGHT

NOTE: SUPPORT PLATE
SHALL REQUIRE HOLES
DRILLED FOR 7/8"
ANCHOR BOLTS TYPICAL.



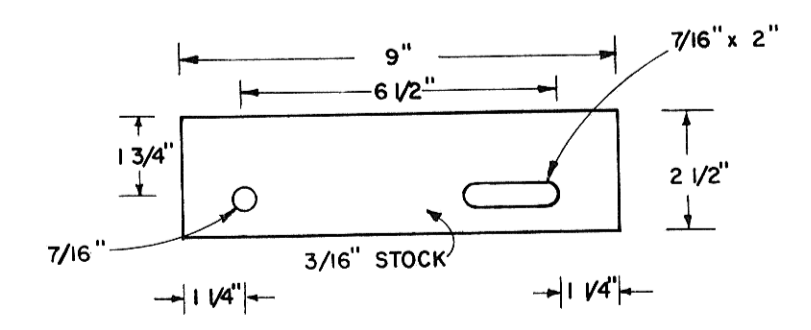
**ANCHOR LEG DETAIL
ELEVATION VIEW**
SCALE: 1" = 4'



**ANCHOR LEG DETAIL
PLAN VIEW**
SCALE: 1" = 4'

MATERIALS

- C10 x 20 CHANNELS
- 1/4" PIPE HANDRAILS
- L 3/2" x 3/2" x 3/8" ANGLES
- 7/8" ANCHOR BOLTS
- ALUMINUM STAIR TREADS AND PLATFORMS
- HOT DIP GALVANIZED FINISH ON ALL OTHER METAL



TYPICAL END VIEW OF STAIR TREAD
SCALE: 1" = 4'

TOMAN ENGINEERING COMPANY
CIVIL & ENVIRONMENTAL CONSULTANTS
P.O. BOX 708
MANDAN, N.D. 58554

UPGRADING WASTEWATER TREATMENT FACILITIES INCREMENT 1
CONTRACTOR'S RECORD DRAWINGS (AS BUILT)

EPA NO. C380325-03
CITY OF MANDAN, N.D.
CITY PROJECT NO.-SEWER IMPROVEMENT DISTRICT NO.-17

CROSSOVER PLATFORMS & WET WELL DETAILS

SHEET NUMBER

13-B

OF 23 SHEETS