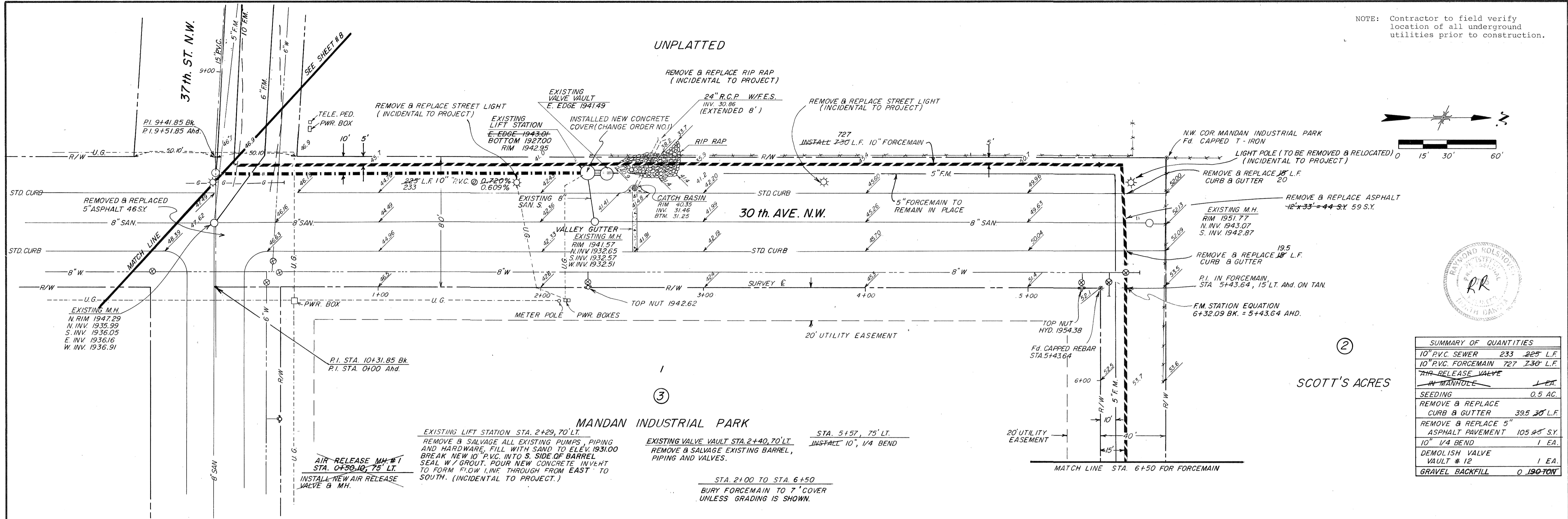


NOTE: Contractor to field verify location of all underground utilities prior to construction.

UNPLATTED

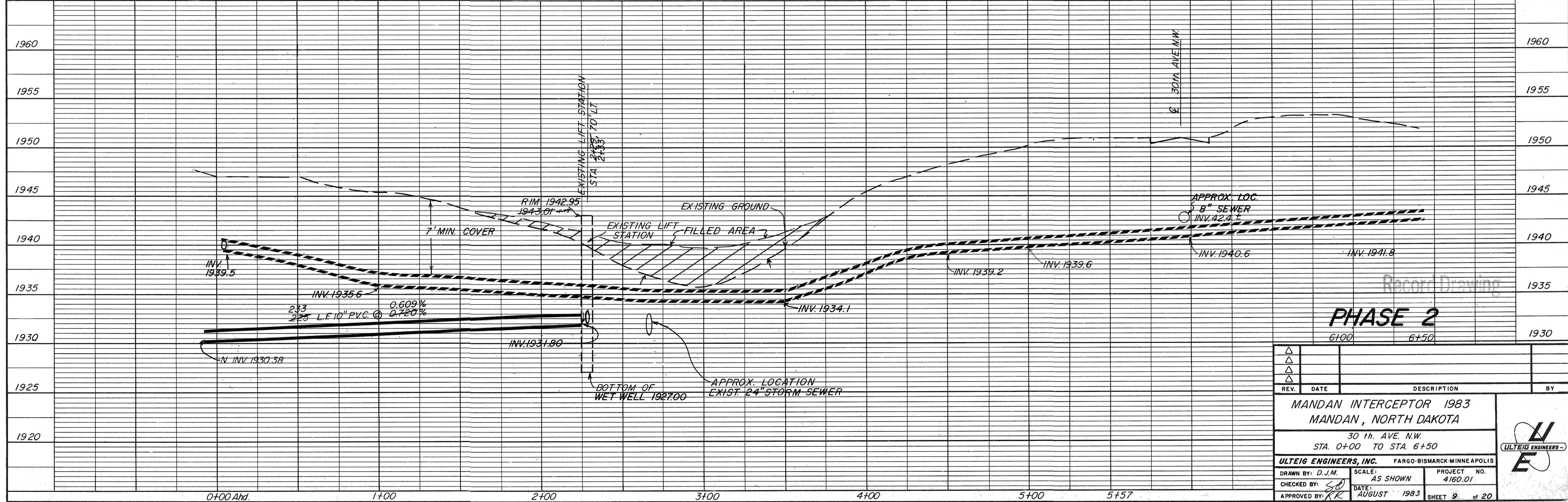


0 15' 30' 60'



SCOTT'S ACRES

SUMMARY OF QUANTITIES	
10" PVC SEWER	233 225' L.F.
10" PVC FORCE MAIN	727 730' L.F.
AIR RELEASE VALVE IN MANHOLE	1 EA.
SEEDING	0.5 AC.
REMOVE & REPLACE CURB & GUTTER	395 30' L.F.
REMOVE & REPLACE 5" ASPHALT PAVEMENT	105 45' S.Y.
10" 1/4 BEND	1 EA.
DEMOLISH VALVE VAULT # 12	1 EA.
GRAVEL BACKFILL	0 190 TON



PHASE 2

REV.	DATE	DESCRIPTION	BY

MANDAN INTERCEPTOR 1983  
MANDAN, NORTH DAKOTA  
30th AVE. N.W.  
STA. 0+00 TO STA. 6+50

ULTEIG ENGINEERS, INC. FARGO-BISMARCK-MINNEAPOLIS

DRAWN BY: D.J.M. SCALE: AS SHOWN PROJECT NO. 4160.01  
CHECKED BY: SD DATE: AUGUST 1983 SHEET 9 of 20  
APPROVED BY: KR