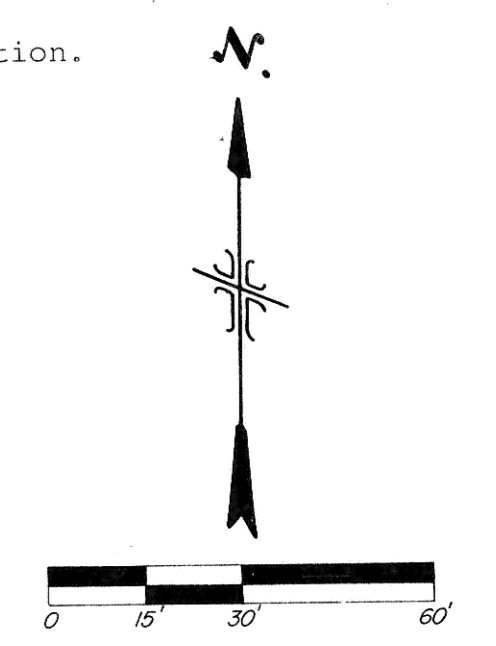
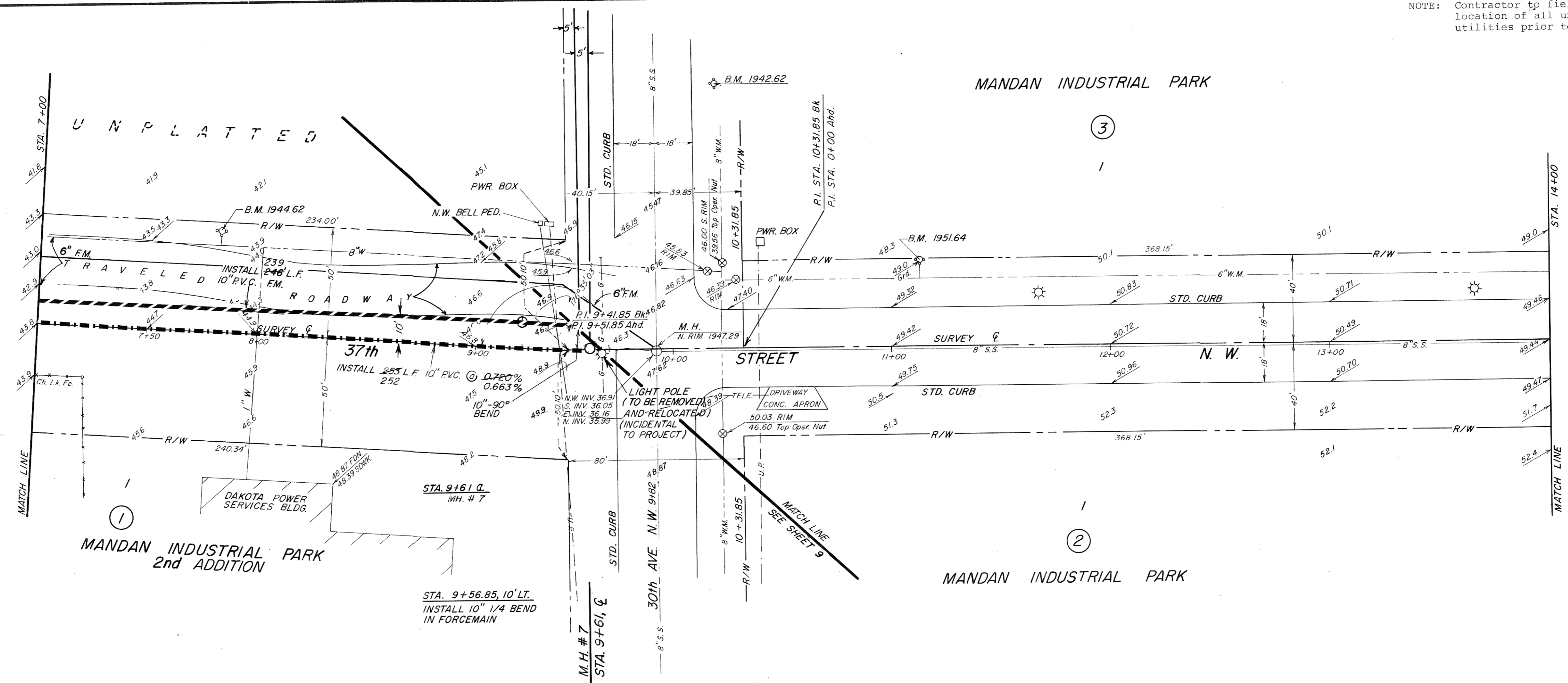


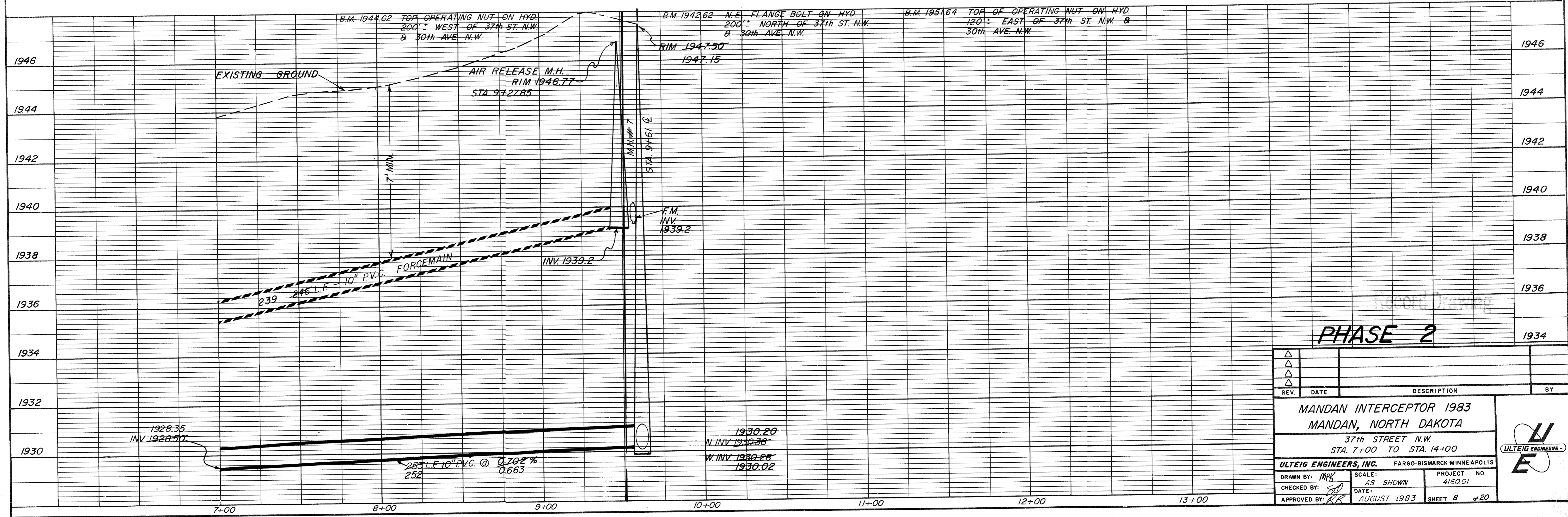
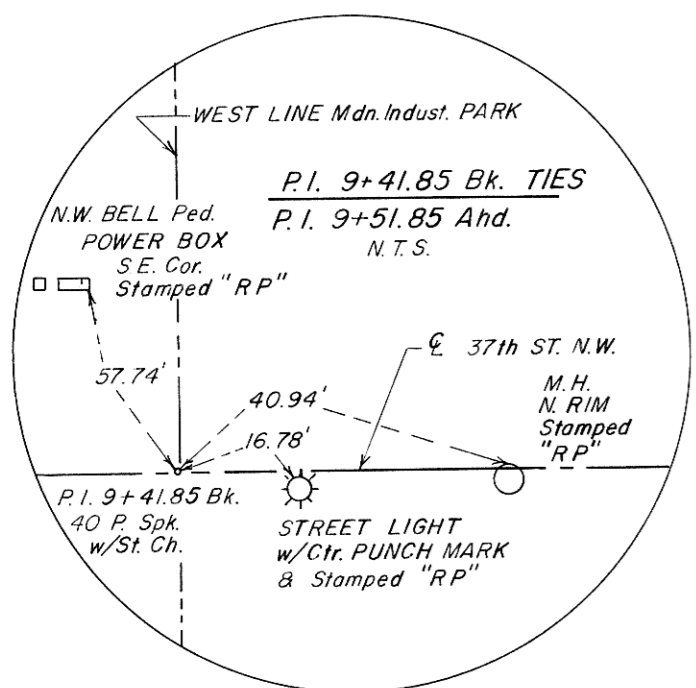
NOTE: Contractor to field verify location of all underground utilities prior to construction.



NOTE: FORCE MAIN TO HAVE 7' MIN. COVER.



SUMMARY OF QUANTITIES	
10" 1/4 BEND	1 EA.
10" PVC FORCEMAIN 239 246' L.F.	
10" PVC SEWER 252 253' L.F.	
MANHOLE	1 EA.
ROAD GRAVEL	578 416' S.Y.
AIR RELEASE VALVE IN MANHOLE	1 EA.



**PHASE 2**

REV.	DATE	DESCRIPTION	BY

MANDAN INTERCEPTOR 1983  
MANDAN, NORTH DAKOTA  
37th STREET N.W.  
STA. 7+00 TO STA. 14+00

ULTEIG ENGINEERS, INC. FARGO-BISMARCK-MINNEAPOLIS

DRAWN BY: MPK SCALE: AS SHOWN PROJECT NO. 4160.01  
CHECKED BY: [Signature] DATE: AUGUST 1983 SHEET 8 of 20  
APPROVED BY: RR