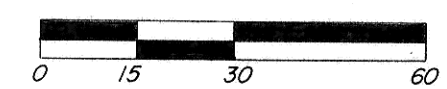
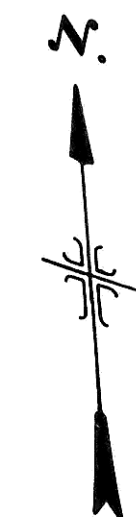


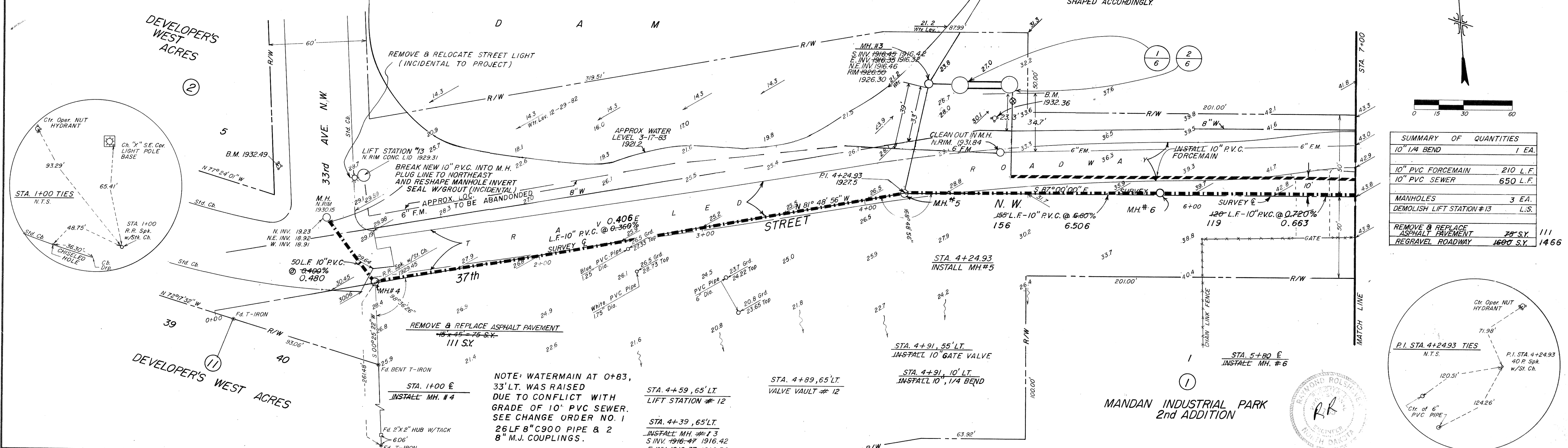
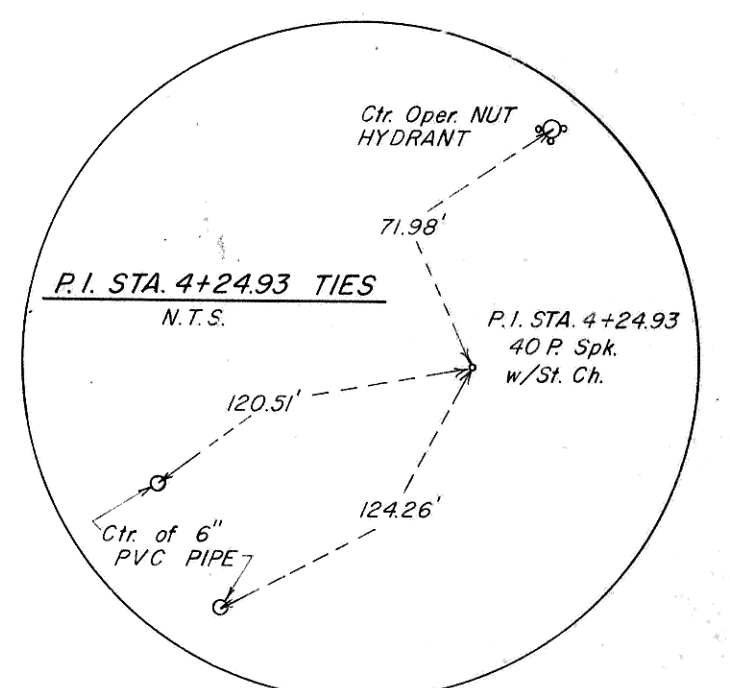
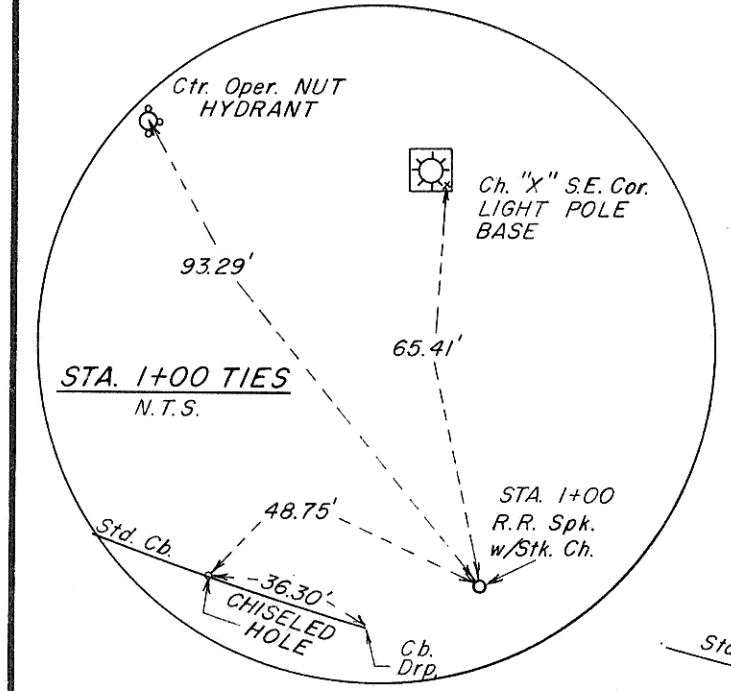
U N P L A T T E D

NOTE: MH #3, KNOCKOUT FOR 15" P.V.C. TO BE PROVIDED & PLUGGED WITH CONCRETE WHEN INSTALLED FOR FUTURE EXTENSION. INVERT IN MANHOLE TO BE SHAPED ACCORDINGLY.

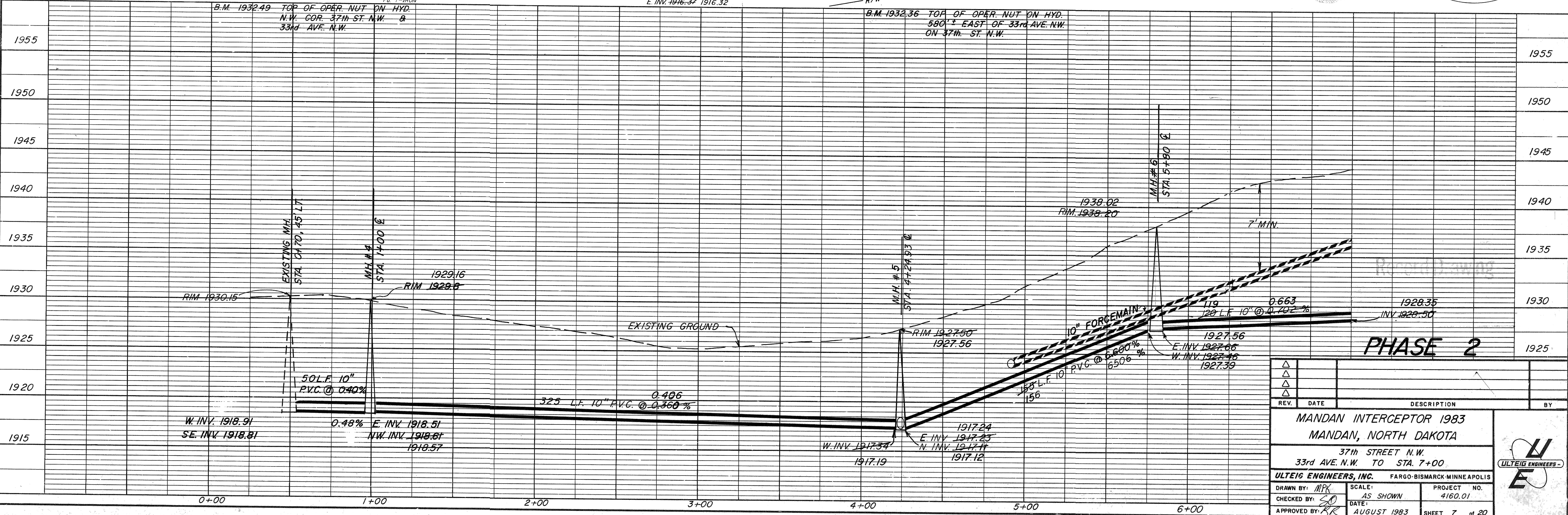
NOTE: Contractor to field verify location of all underground utilities prior to construction.



SUMMARY OF QUANTITIES	
10" 1/4 BEND	1 EA.
10" PVC FORCEMAIN	210 L.F.
10" PVC SEWER	650 L.F.
MANHOLES	3 EA.
DEMOLISH LIFT STATION #13	L.S.
REMOVE & REPLACE ASPHALT PAVEMENT	25' S.Y. 111
REGRAVEL ROADWAY	1600' S.Y. 1466



NOTE: WATERMAIN AT 0+83, 33' LT. WAS RAISED DUE TO CONFLICT WITH GRADE OF 10" PVC SEWER. SEE CHANGE ORDER NO. 1
26LF 8" C900 PIPE & 2 8" M.J. COUPLINGS.



PHASE 2

REV.	DATE	DESCRIPTION	BY

MANDAN INTERCEPTOR 1983		MANDAN, NORTH DAKOTA	
37th STREET N.W.			
33rd AVE. N.W. TO STA. 7+00			
ULTEIG ENGINEERS, INC.		FARGO-BISMARCK-MINNEAPOLIS	
DRAWN BY: MPK	SCALE: AS SHOWN	PROJECT NO. 4160.01	
CHECKED BY: SO	DATE: AUGUST 1983	SHEET 7 of 20	
APPROVED BY: RR			

