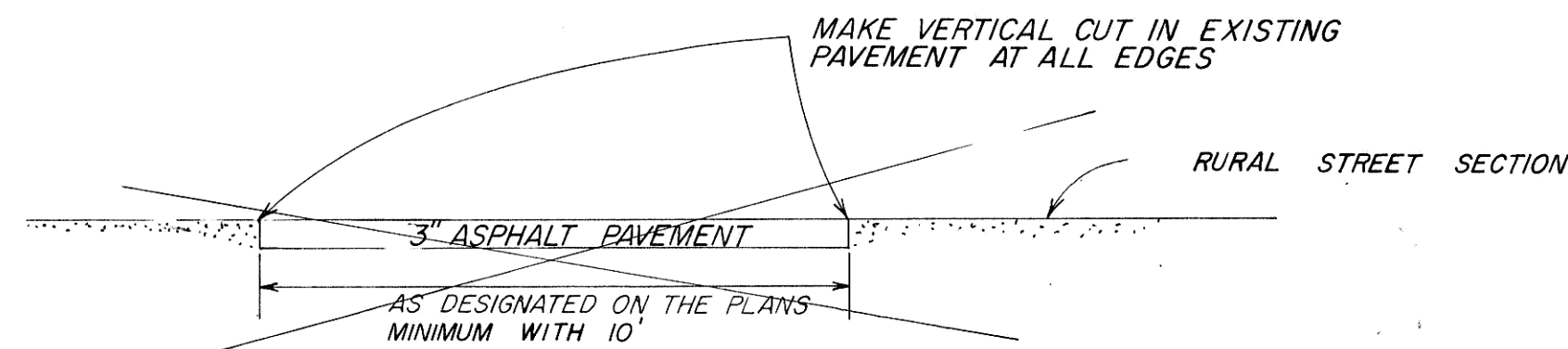
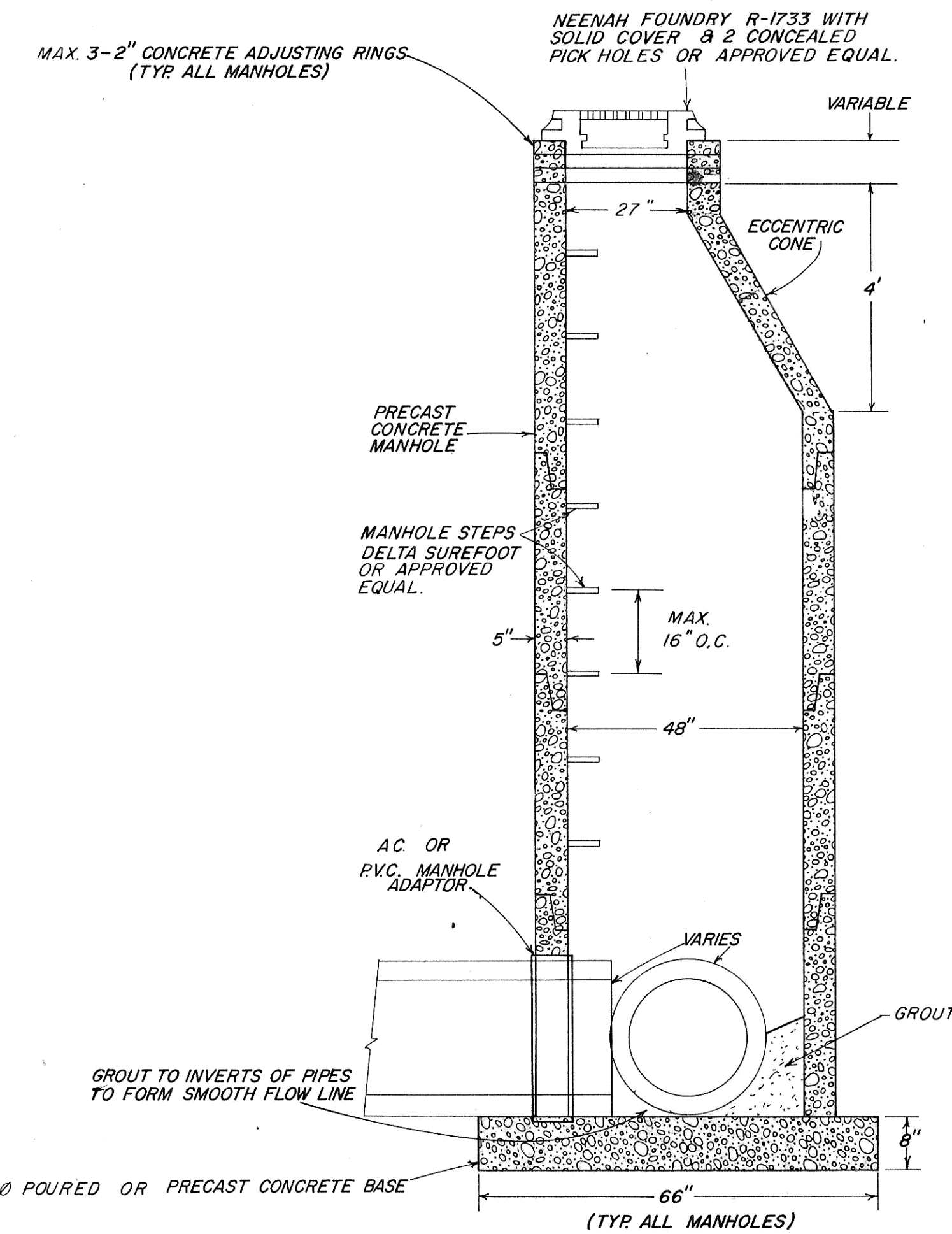


**5" ASPHALT PAVEMENT PATCH DETAIL**

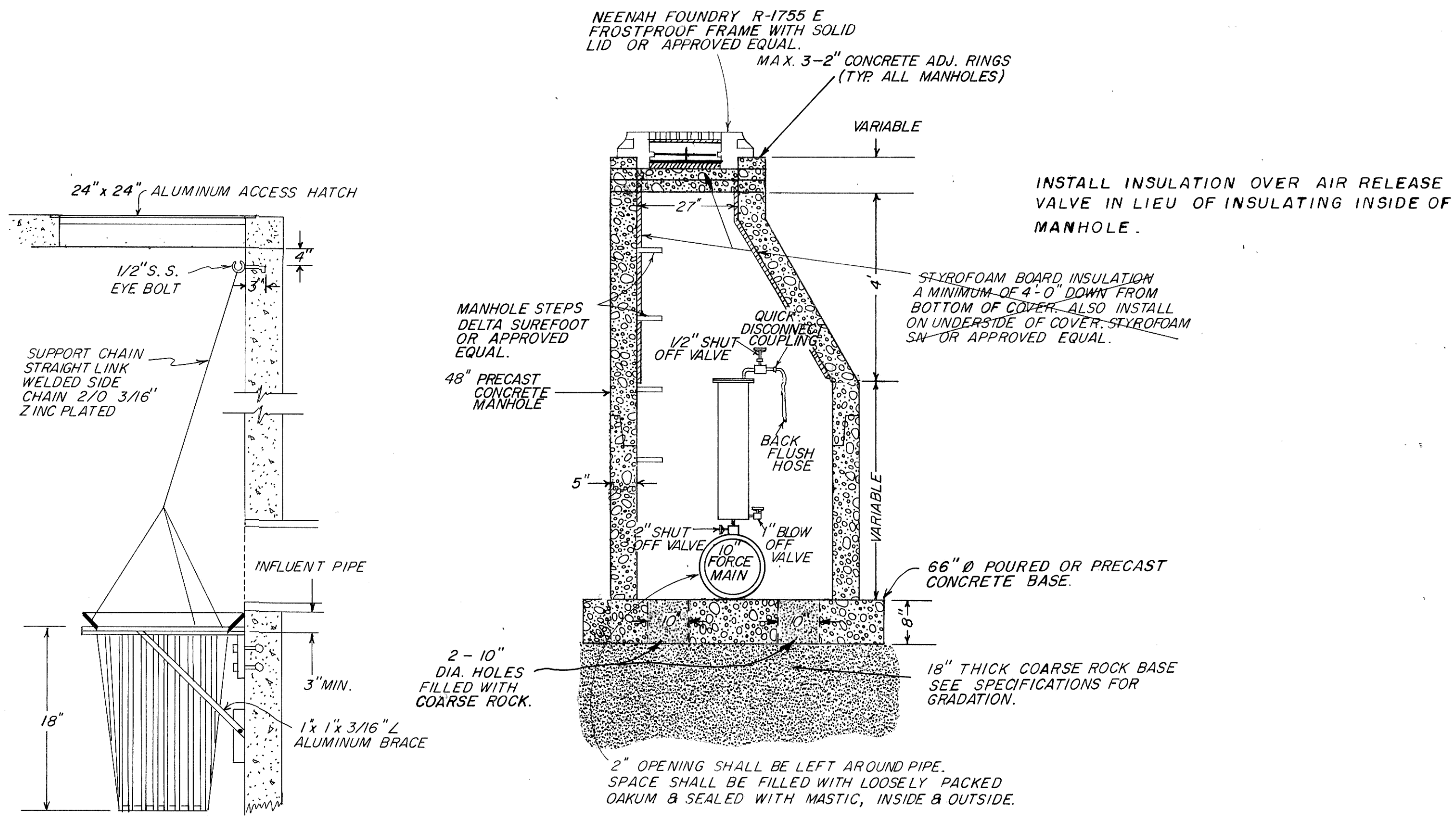


**3" ASPHALT PAVEMENT PATCH DETAIL**

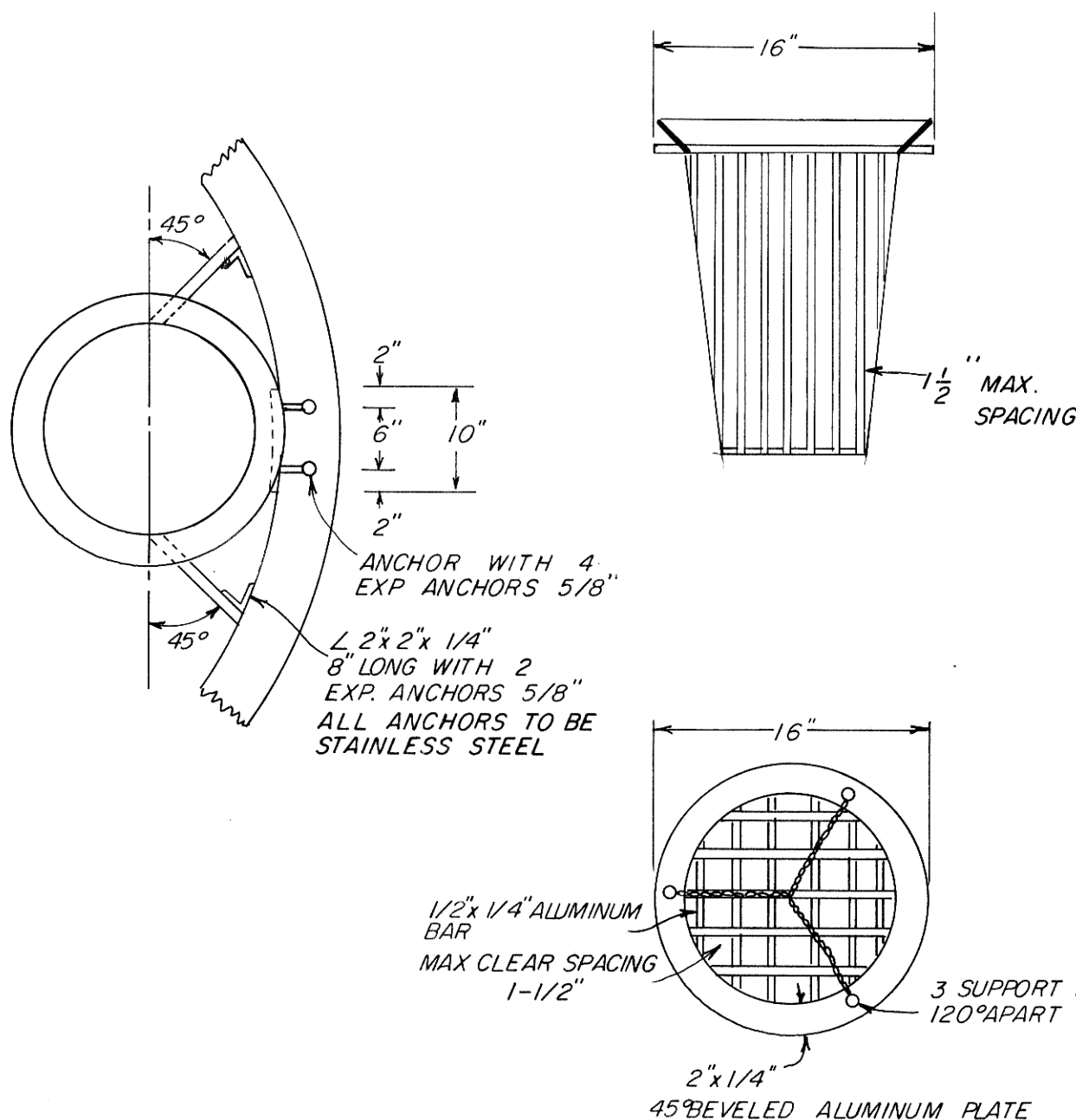


**SANITARY MANHOLE DETAIL**

N. T. S.

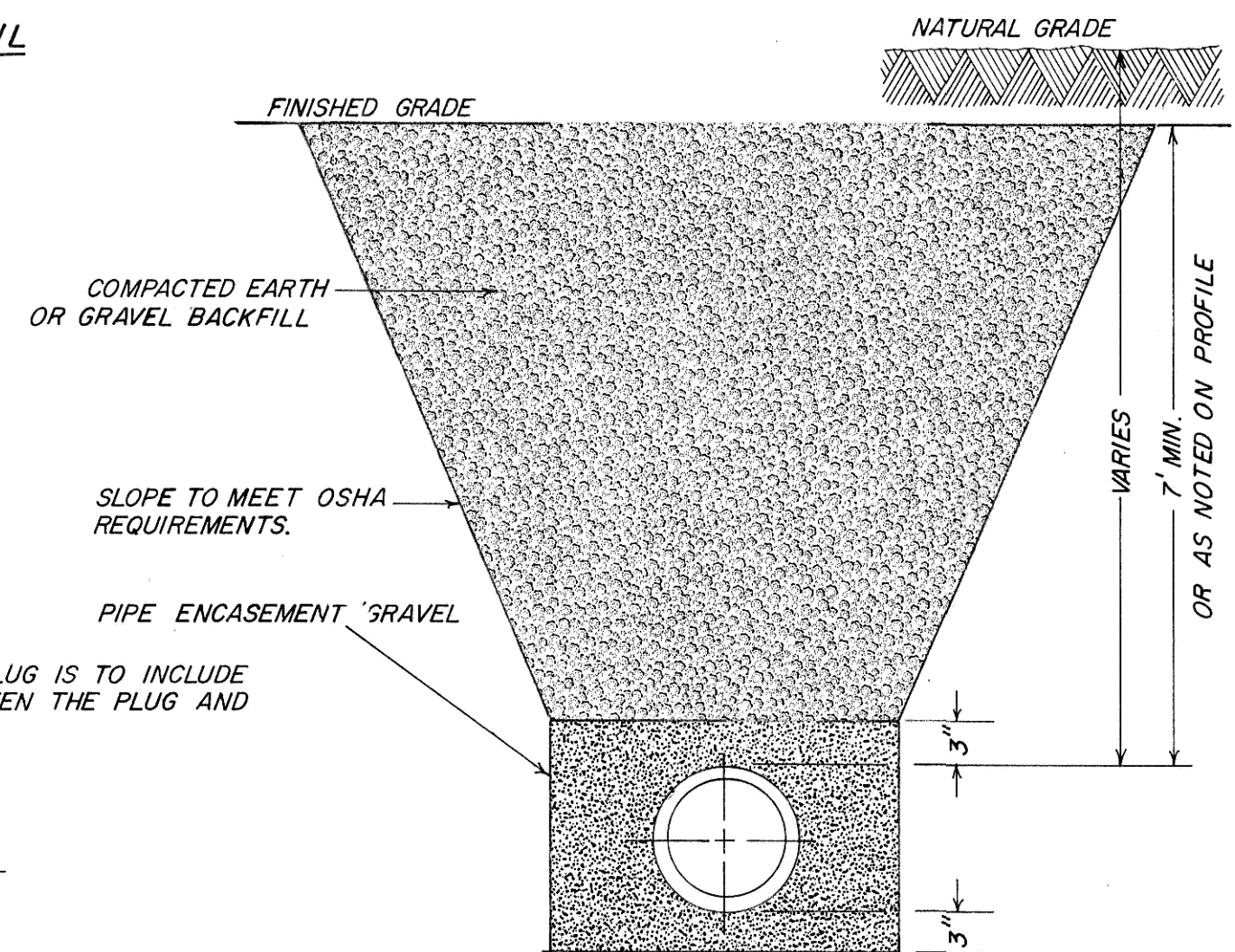


**AIR RELEASE MANHOLE DETAIL**



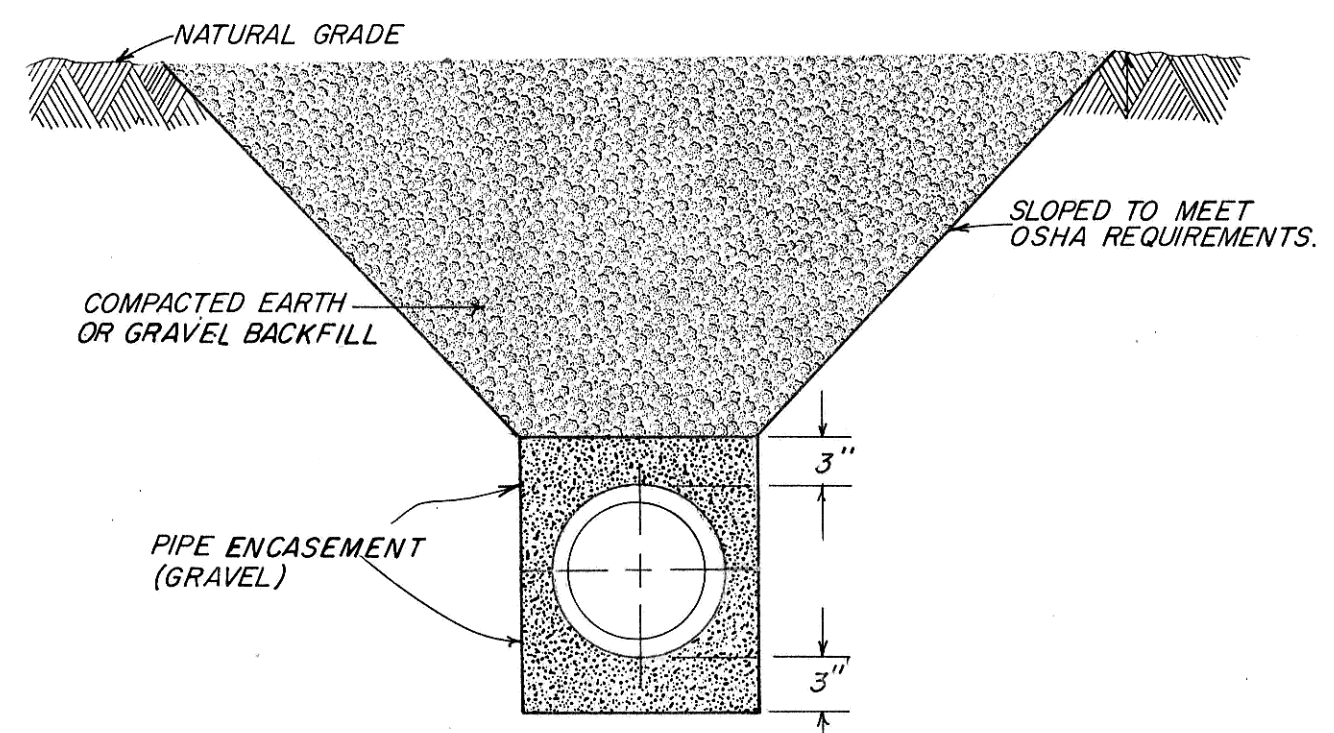
**TRASH BASKET DETAIL**

1/17



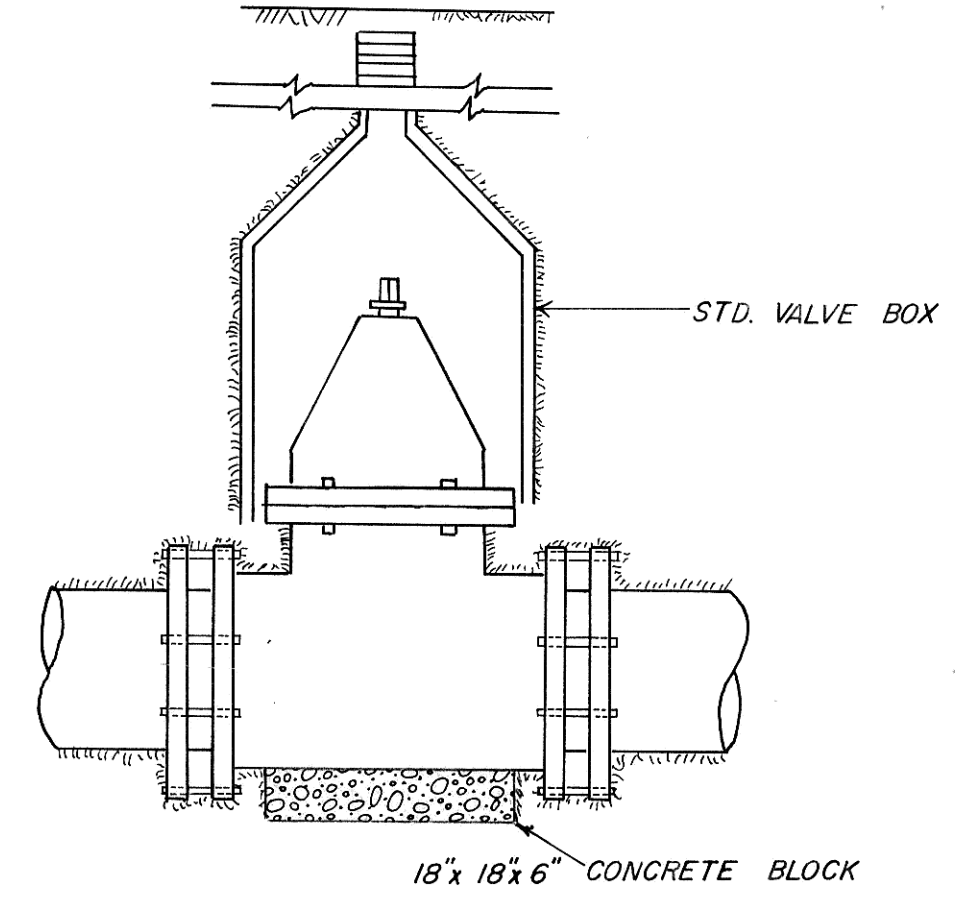
**FORCE MAIN TRENCH BACKFILL DETAIL**

N. T. S.



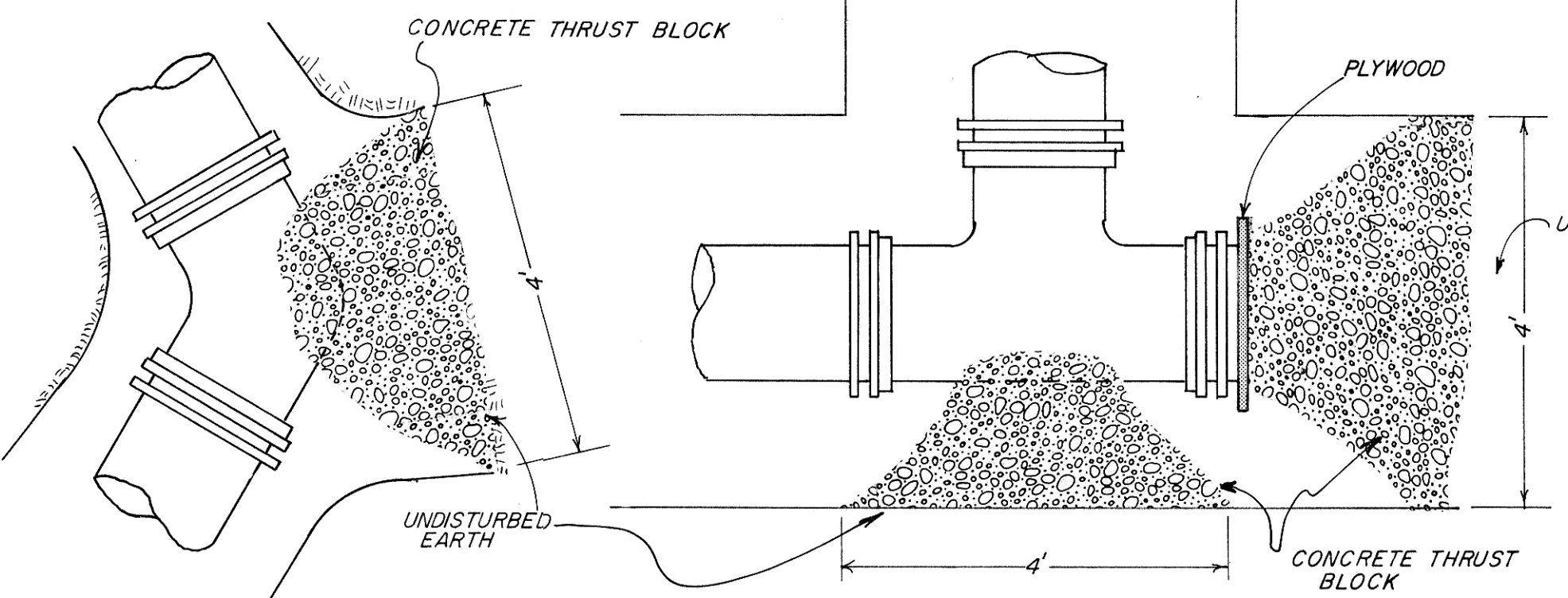
**SEWER PIPE TRENCH BACKFILL DETAIL**

N. T. S.



**TYPICAL VALVE & BOX DETAIL**

N. T. S.



**TYPICAL BEND**

N. T. S.

**TEE & PLUG THRUST BLOCK DETAIL**

N. T. S.

NOTE: CONCRETE THRUST BLOCKING REQUIRED ON ALL BENDS, TEES AND PLUGS ON FORCEMAIN.

RR

**PHASE 2**

REV.	DATE	DESCRIPTION	BY

**MANDAN INTERCEPTOR 1983**  
**MANDAN, NORTH DAKOTA**

**DETAIL SHEET**

**ULTEIG ENGINEERS, INC.** CONSULTING ENGINEERS • ARCHITECT  
FARGO • BISMARCK • MINNEAPOLIS

DRAWN BY: TR	SCALE: AS SHOWN	PROJECT NO. 4160.01
CHECKED BY: SO	DATE: AUGUST 1983	SHEET 17 of 20
APPROVED BY: RR		

Record Drawing