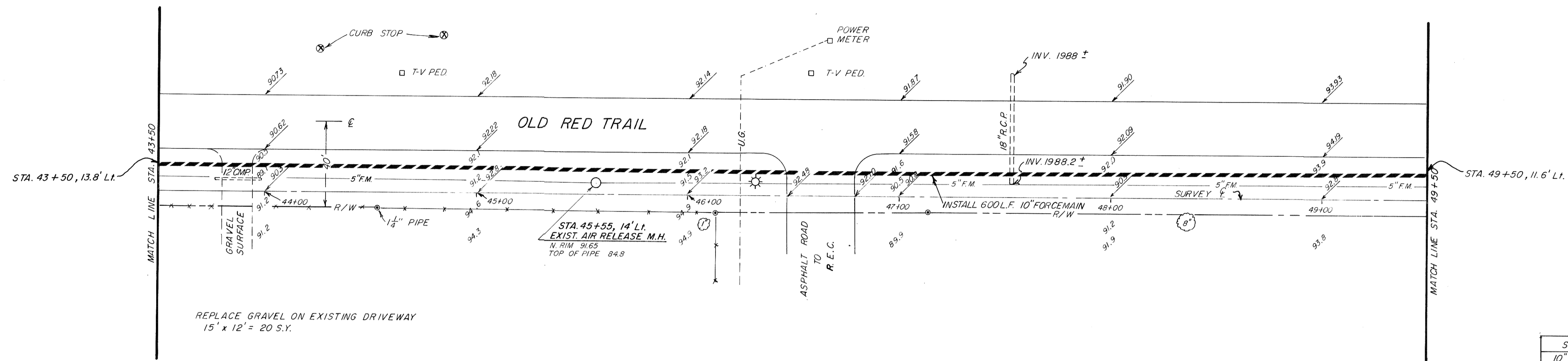
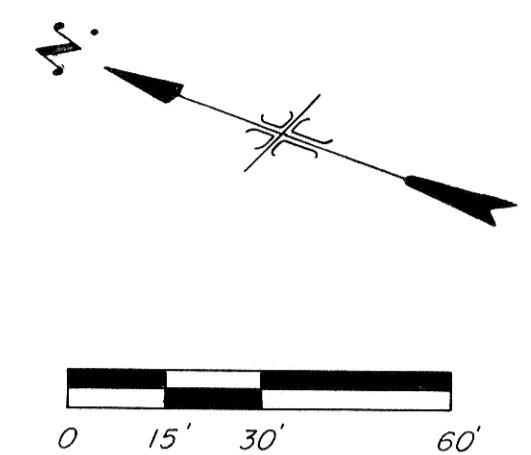


NOTE: FORCEMAIN TO HAVE 7' MINIMUM COVER UNLESS GRADING IS REQUIRED.

NOTE: Contractor to field verify location of all underground utilities prior to construction.

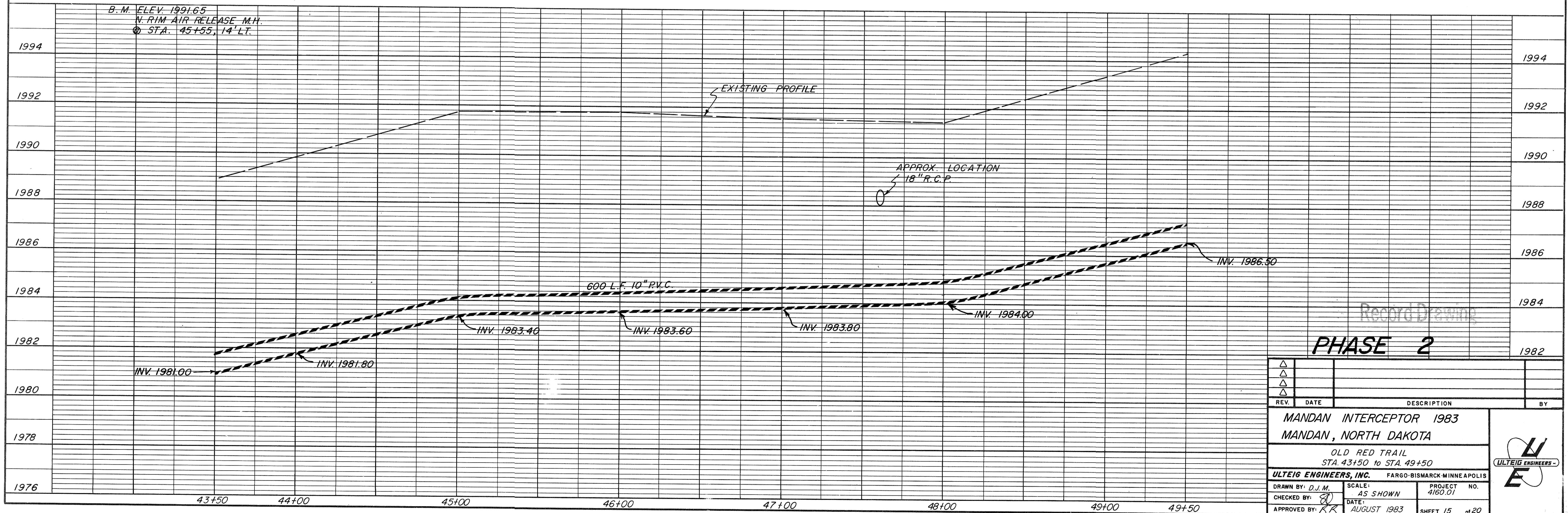


REPLACE GRAVEL ON EXISTING DRIVEWAY  
15' x 12' = 20 S.Y.

NOTE:  
10" FORCEMAIN TO BE GRADED AS SHOWN

REMOVE & REPLACE ASPHALT PAVEMENT  
12' x 32' = 43 S.Y.  
88 S.Y.

SUMMARY OF QUANTITIES	
10" P.V.C. FORCEMAIN	600 L.F.
SEEDING	0.4 AC.
REMOVE & REPLACE 5" ASPHALT PAVEMENT	88 S.Y.
ROAD GRAVEL	20 S.Y.
GRAVEL BACKFILL	0.136 TON



Record Drawing  
**PHASE 2**

REV.	DATE	DESCRIPTION	BY
△			
△			
△			
△			

**MANDAN INTERCEPTOR 1983**  
MANDAN, NORTH DAKOTA

OLD RED TRAIL  
STA. 43+50 to STA. 49+50

**ULTEIG ENGINEERS, INC.** FARGO-BISMARCK-MINNEAPOLIS

DRAWN BY: D.J.M. SCALE: AS SHOWN PROJECT NO. 4160.01  
CHECKED BY: [Signature] DATE: AUGUST 1983 SHEET 15 of 20  
APPROVED BY: [Signature]