

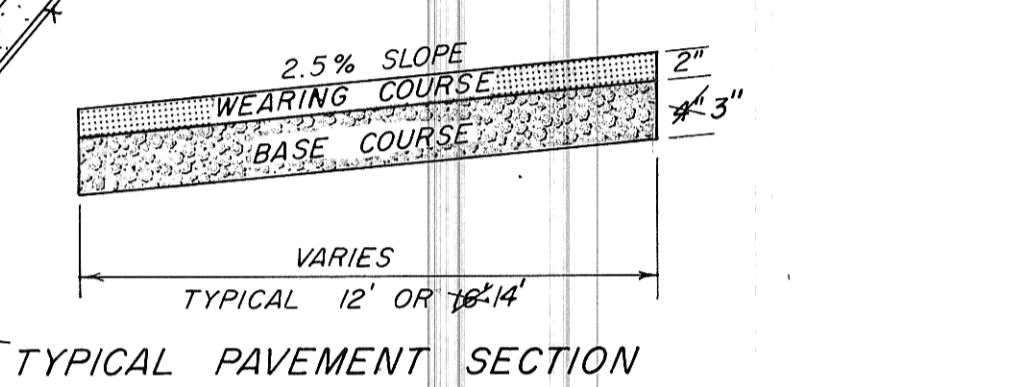
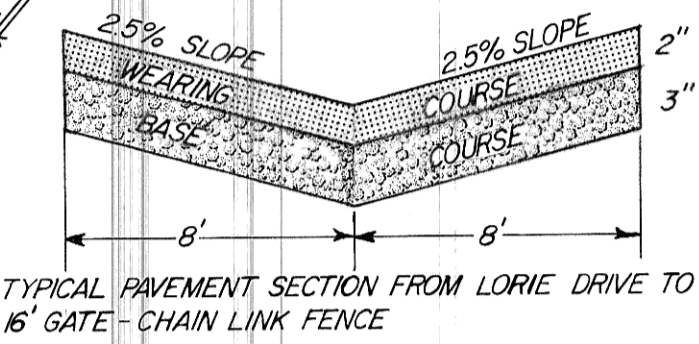
BENCH MARK
1643.22 TOP OF CONC. AT NW COR.
OF ORIGINAL WET WELL, STA. 1+74, 35' LT.

NOTE:
1. REMOVE EXISTING U.G. FUEL TANK,
RELOCATE ADJACENT TO GENERATOR BLDG.
INCIDENTAL TO PROJECT.
2. ENTIRE DISTURBED AREA SHALL BE SEED.

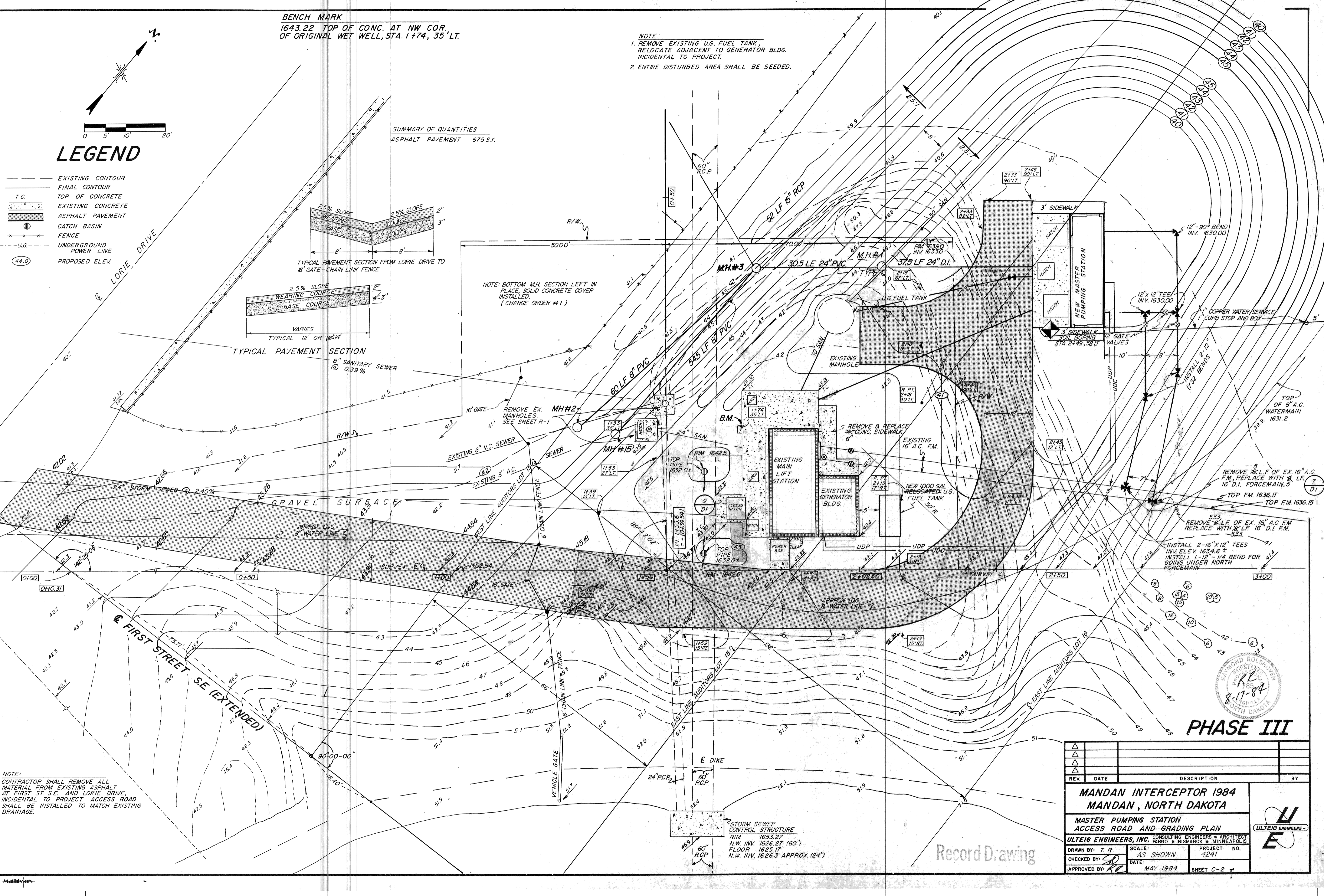
SUMMARY OF QUANTITIES
ASPHALT PAVEMENT 675 S.Y.

LEGEND

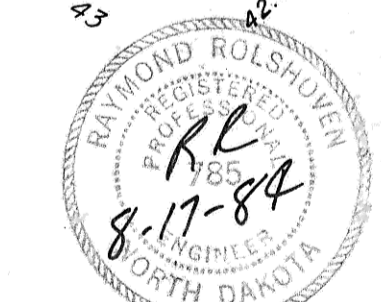
- EXISTING CONTOUR
- FINAL CONTOUR
- T.C. TOP OF CONCRETE
- EXISTING CONCRETE
- ASPHALT PAVEMENT
- CATCH BASIN
- FENCE
- U.G. UNDERGROUND POWER LINE
- 44.0 PROPOSED ELEV.



NOTE: BOTTOM M.H. SECTION LEFT IN PLACE, SOLID CONCRETE COVER INSTALLED.
(CHANGE ORDER #1)



NOTE:
CONTRACTOR SHALL REMOVE ALL MATERIAL FROM EXISTING ASPHALT AT FIRST ST. S.E. AND LORIE DRIVE, INCIDENTAL TO PROJECT. ACCESS ROAD SHALL BE INSTALLED TO MATCH EXISTING DRAINAGE.



PHASE III

REV.	DATE	DESCRIPTION	BY

MANDAN INTERCEPTOR 1984		MANDAN, NORTH DAKOTA	
MASTER PUMPING STATION ACCESS ROAD AND GRADING PLAN			
ULTEIG ENGINEERS, INC. CONSULTING ENGINEERS • ARCHITECT FARGO • BISMARCK • MINNEAPOLIS			
DRAWN BY: T. R.	SCALE: AS SHOWN	PROJECT NO. 4241	
CHECKED BY: SD	DATE: MAY 1984		
APPROVED BY: RL			

Record Drawing