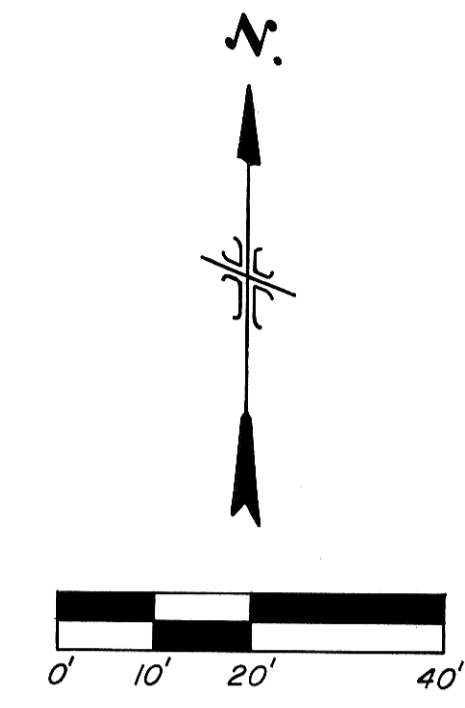
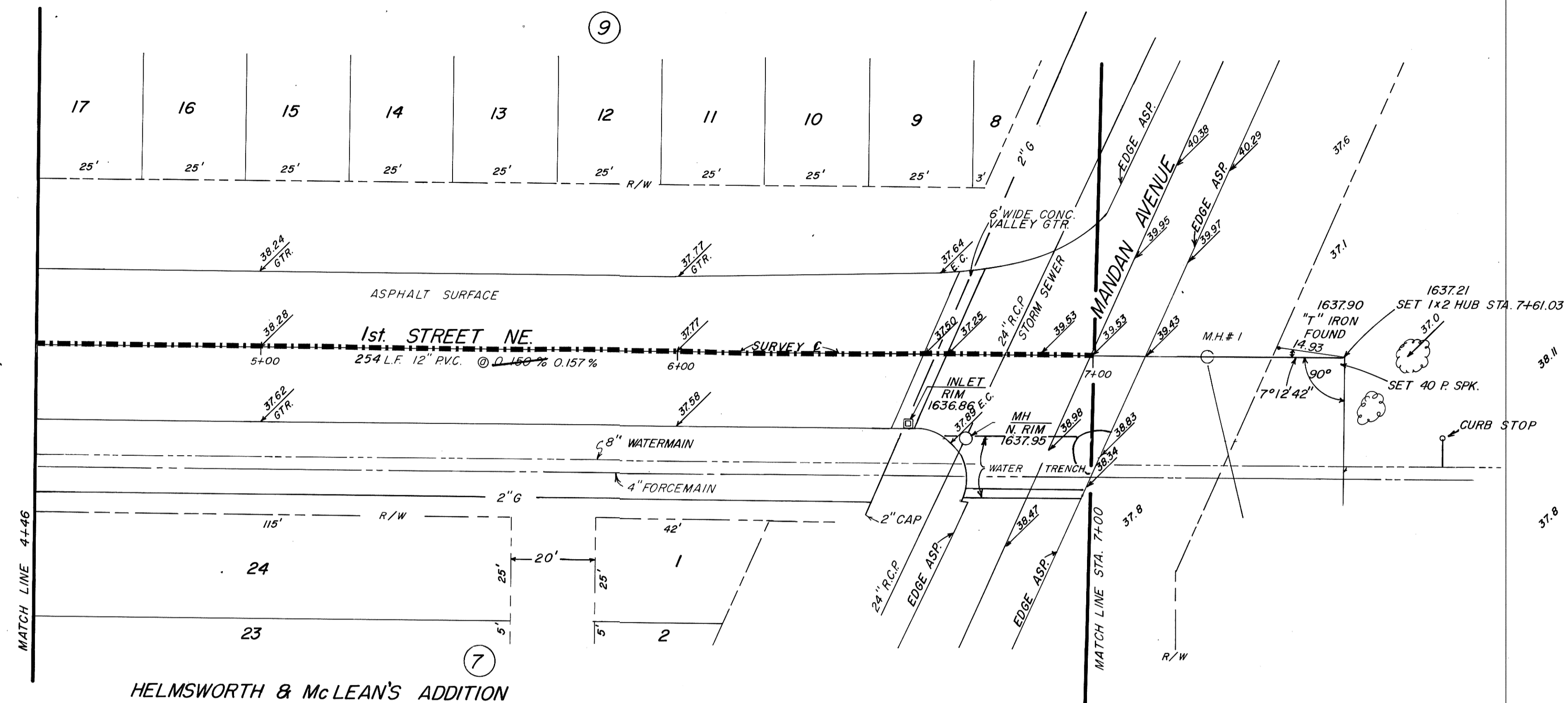


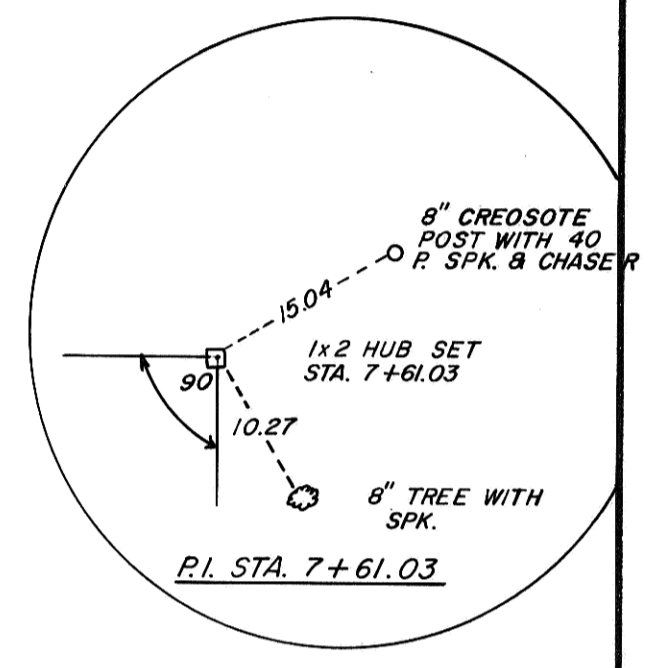
HELMSWORTH & McLEAN'S ADDITION

NOTE: Contractor to field verify location of all underground utilities prior to construction.



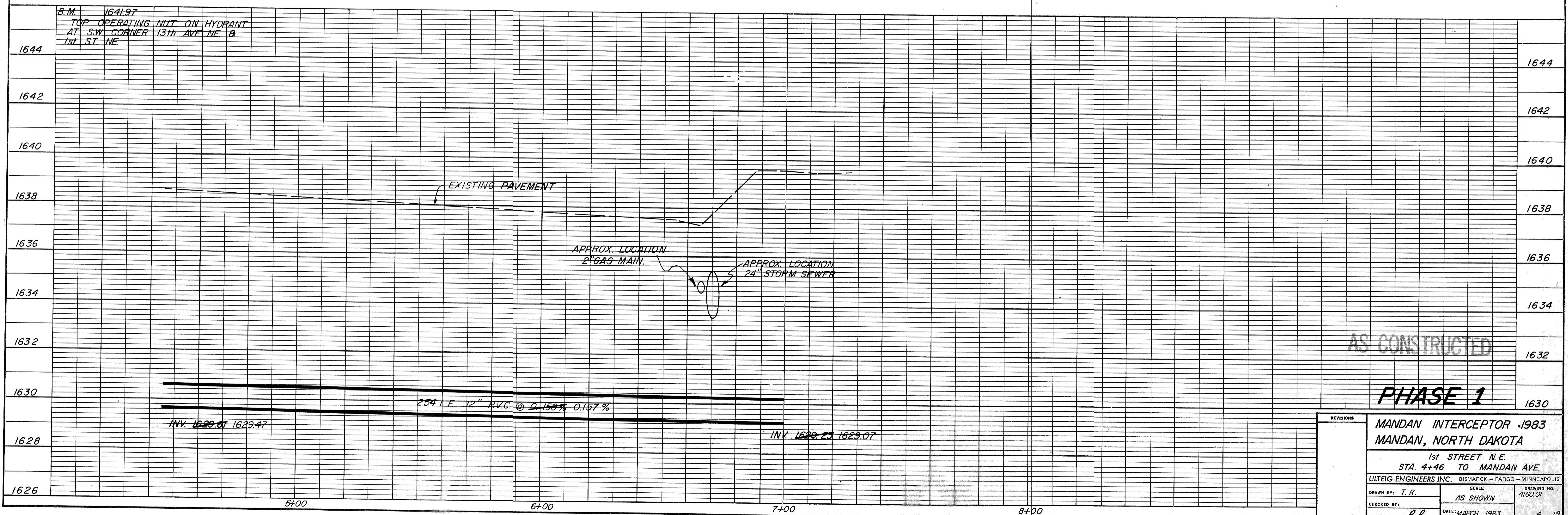
REMOVE AND REPLACE ASPHALT
10' x 254' = 340 S.Y.

REMOVE AND REPLACE VALLEY
GUTTER 12' x 6' = 8 S.Y.



SUMMARY OF QUANTITIES	
12" PVC SEWER	254 L.F.
ASPHALT REMOVAL & REPLACEMENT	340 S.Y.
CONCRETE REMOVAL AND REPLACEMENT	8 S.Y.
RECONNECT SEWER SERVICE	1 EA.
4" SEWER SERVICE PIPE	8 L.F.

HELMSWORTH & McLEAN'S ADDITION



AS CONSTRUCTED

PHASE 1

REVISIONS	
MANDAN INTERCEPTOR .1983 MANDAN, NORTH DAKOTA	
1st STREET N.E. STA. 4+46 TO MANDAN AVE.	
ULTEIG ENGINEERS INC. BISMARCK - FARGO - MINNEAPOLIS	
DRAWN BY: T.R.	SCALE: AS SHOWN
CHECKED BY:	DRAWING NO.: 4160.01
APPROVED BY: R.R.	DATE: MARCH 1983
	SHEET 4 OF 19