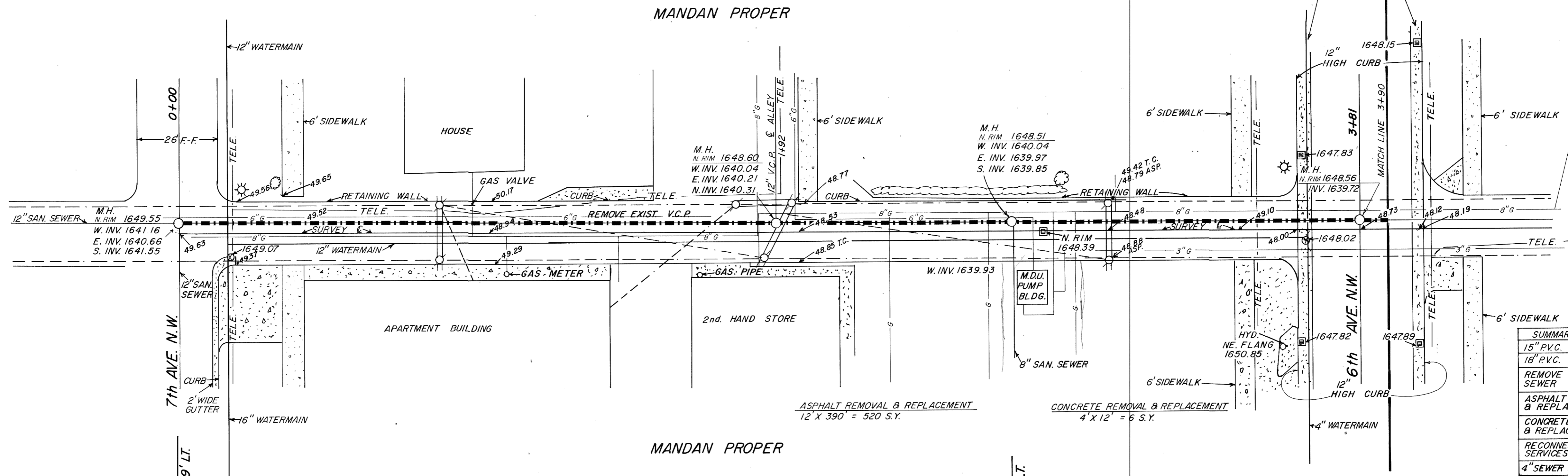


**NOTE:** CONTRACTOR SHALL TELEWISE THE EXISTING 18" V.C. PIPE TO DETERMINE SERVICE LINE SIZES AND LOCATIONS. THE SOUNDNESS OF THE PIPE MUST BE CHECKED TO DETERMINE STRUCTURAL CONDITION OF THE PIPE.

**NOTE:** Contractor to field verify location of all underground utilities prior to construction.



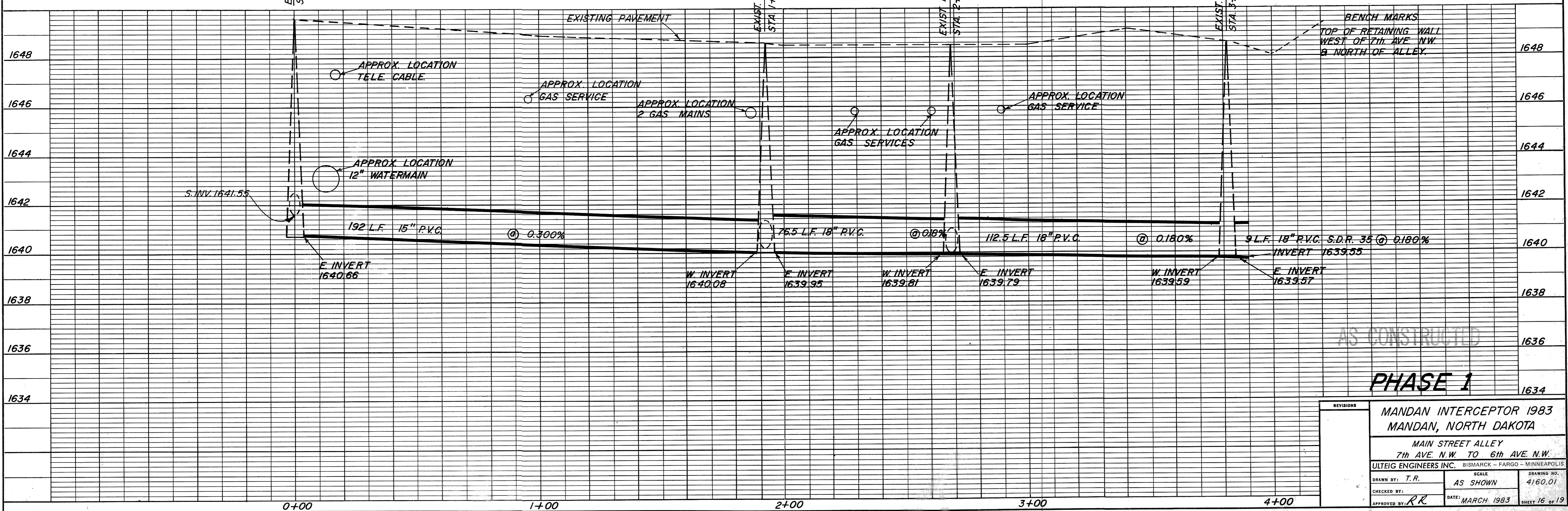
SUMMARY OF QUANTITIES	
15" P.V.C.	102 L.F.
18" P.V.C.	108 L.F.
REMOVE SEWER	390 L.F.
ASPHALT REMOVAL & REPLACEMENT	520 S.Y.
CONCRETE REMOVAL & REPLACEMENT	8 S.Y.
RECONNECT SEWER SERVICES	7 Ea.
4" SEWER SERVICE PIPE	21 L.F.
TELEWISE SEWER	390 L.F.

EXIST. M.H. STA. 0+00, 2.9' LT. REMOVE EXISTING 18" V.C. SEWER AND INSTALL 15" P.V.C. SEWER. SEAL W/ GROUT (INCIDENTAL)

EXIST. M.H. STA. 1+92.3, 3' LT. REMOVE EXISTING 18" V.C. SEWER AND INSTALL 18" P.V.C. SEWER. SEAL W/ GROUT AND FORM SMOOTH FLOW INVERT (INCIDENTAL)

EXIST. M.H. STA. 2+68.5, 3' LT. REMOVE EXISTING 18" V.C. SEWER AND INSTALL 18" P.V.C. SEWER. SEAL W/ GROUT AND FORM SMOOTH FLOW INVERT (INCIDENTAL)

EXIST. M.H. STA. 3+81, 3' LT. REMOVE EXISTING 18" V.C. SEWER AND INSTALL 18" P.V.C. SEWER. SEAL W/ GROUT AND FORM SMOOTH FLOW INVERT (INCIDENTAL)



AS CONSTRUCTED

**PHASE 1**

REVISIONS MANDAN INTERCEPTOR 1983 MANDAN, NORTH DAKOTA MAIN STREET ALLEY 7th AVE. N.W. TO 6th AVE. N.W.	
DRAWN BY: T.R. CHECKED BY: APPROVED BY: RR	SCALE: AS SHOWN DATE: MARCH 1983 DRAWING NO.: 4160.01 SHEET 16 OF 19