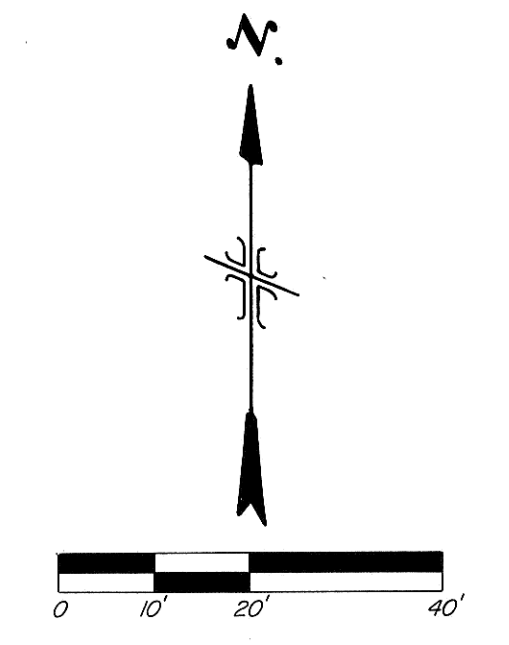


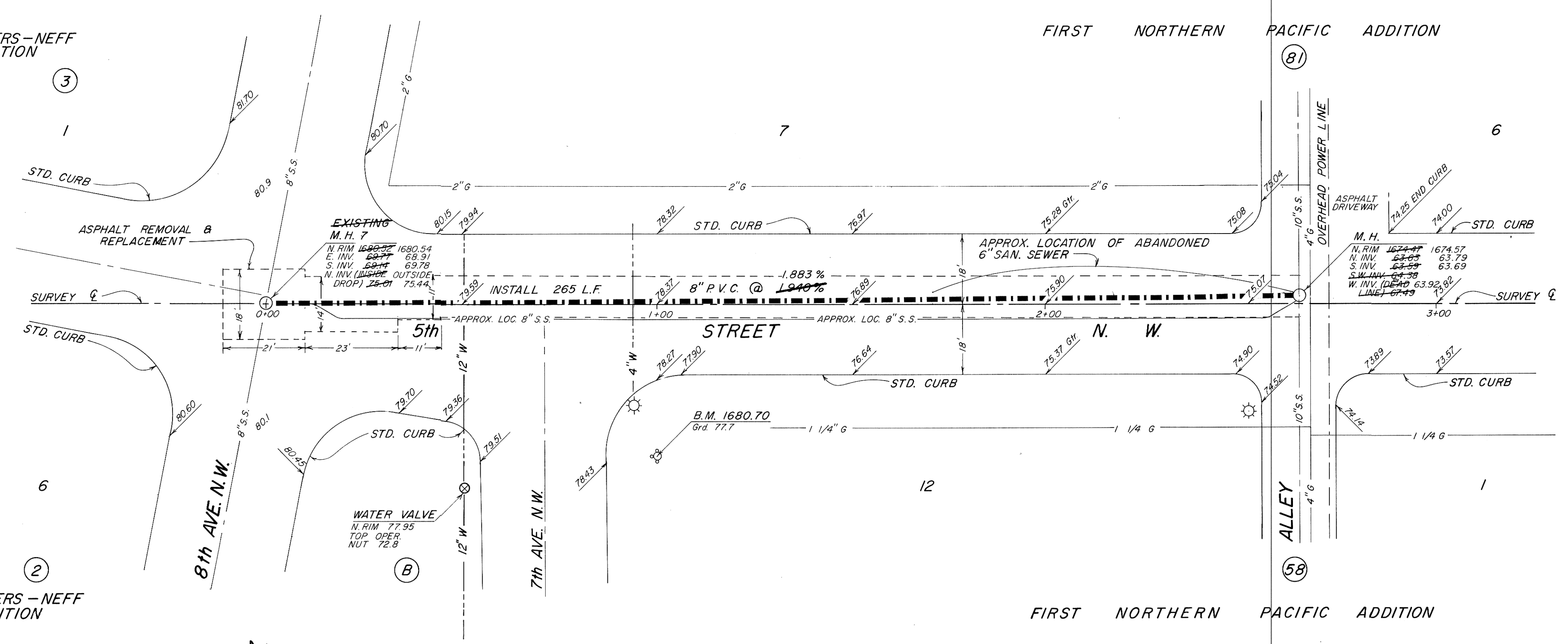
NOTE: Contractor to field verify location of all underground utilities prior to construction.



ALBERS-NEFF 1st ADDITION

NOTE: 2 L.F. 8" PVC PIPE INSTALLED SOUTH OF M.H. #7 TO CONNECT TO 8" V.C. PIPE.

NOTE: 10 L.F. 8" PVC PIPE INSTALLED NORTH OF M.H. #7 TO CONNECT TO 8" V.C. PIPE.



ALBERS-NEFF 1st ADDITION

SUMMARY OF QUANTITIES	
8" PVC SEWER	265 L.F. 277 L.F.
ASPHALT REMOVAL	
8 REPLACEMENT	353.7 349 S.Y.
DROP MANHOLE	1 EA.
RECONNECT SEWER SERVICES	4 EA.
4" SEWER SERVICE PIPE	12 L.F.
REMOVE SEWER PIPE	12 L.F.

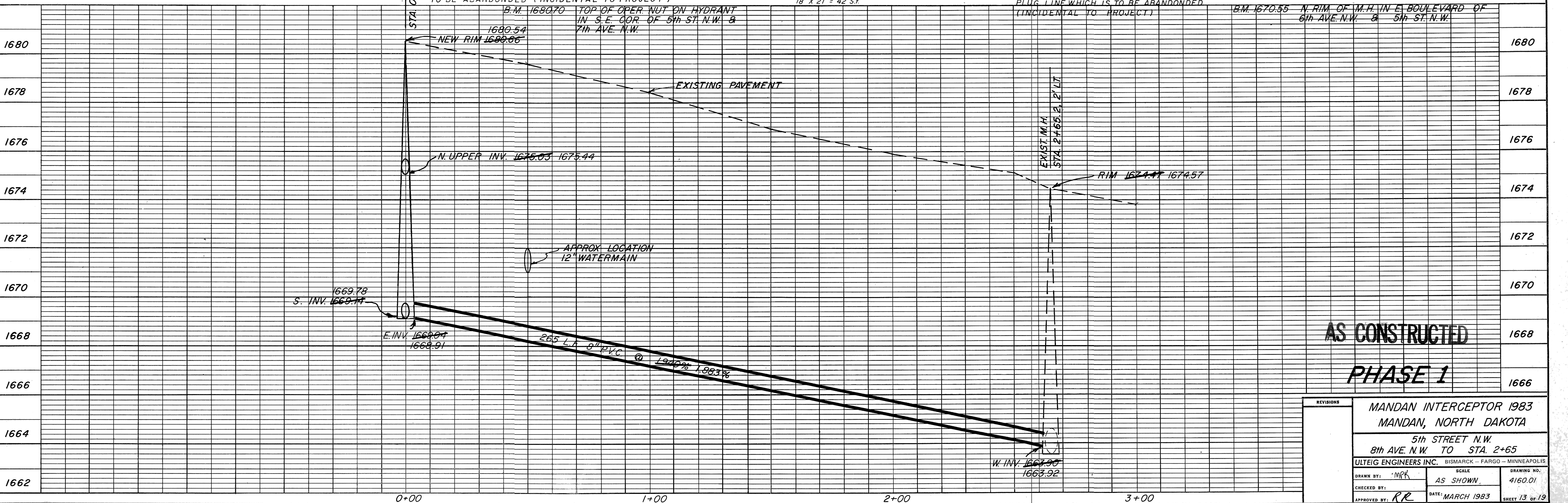
SEWER SERVICE LOCATIONS	
0+34	NORTH
1+08.5	NORTH
1+40	NORTH
1+81	NORTH

M.H. #7 STA. 0+00, E  
 REMOVE & SALVAGE EXISTING M.H. INSTALL NEW DROP M.H.  
 8" PVC DROP PIPE - PLUG LINE WHICH IS TO BE ABANDONED (INCIDENTAL TO PROJECT)  
 B.M. 1680.70 TOP OF OPER. NUT ON HYDRANT IN S.E. COR. OF 5th ST. N.W. & 7th AVE. N.W.

REMOVE & REPLACE PAVEMENT  
 12' x 265' = 315 S.Y. 10.5' x 221' = 233 S.Y.  
 11' x 11' = 13 S.Y.  
 14' x 23' = 36 S.Y.  
 18' x 21' = 42 S.Y.

EXISTING M.H. STA. 2+65.2, 2' Lt  
 BREAK NEW 8" PVC INTO W SIDE, AND SEAL WITH GROUT, RAISE MANHOLE CASTING TO MATCH STREET. (INCIDENTAL TO PROJECT) PLUG LINE WHICH IS TO BE ABANDONED (INCIDENTAL TO PROJECT)

B.M. 1670.55 N. RIM OF M.H. IN E. BOULEVARD OF 6th AVE. N.W. & 5th ST. N.W.



**AS CONSTRUCTED**  
**PHASE 1**

REVISIONS			
MANDAN INTERCEPTOR 1983			
MANDAN, NORTH DAKOTA			
5th STREET N.W.			
8th AVE. N.W. TO STA. 2+65			
ULTEIG ENGINEERS INC. BISMARCK - FARGO - MINNEAPOLIS			
DRAWN BY: MPR	SCALE: AS SHOWN	DRAWING NO. 4160.01	
CHECKED BY:	DATE: MARCH 1983	SHEET 13 OF 19	
APPROVED BY: RR			