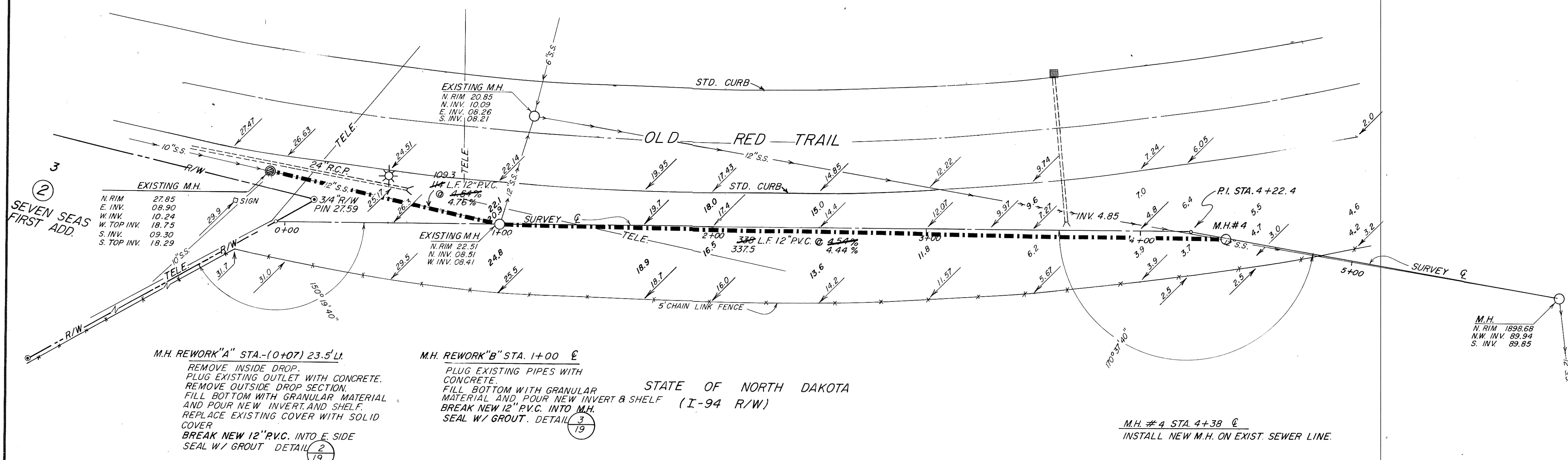
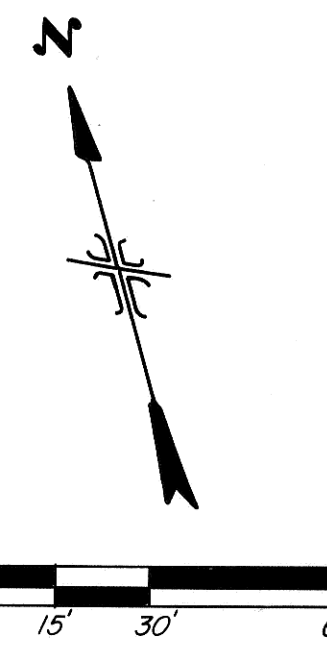


STATE OF NORTH DAKOTA

NOTE: Contractor to field verify location of all underground utilities prior to construction.

Seed Disturbed Area.



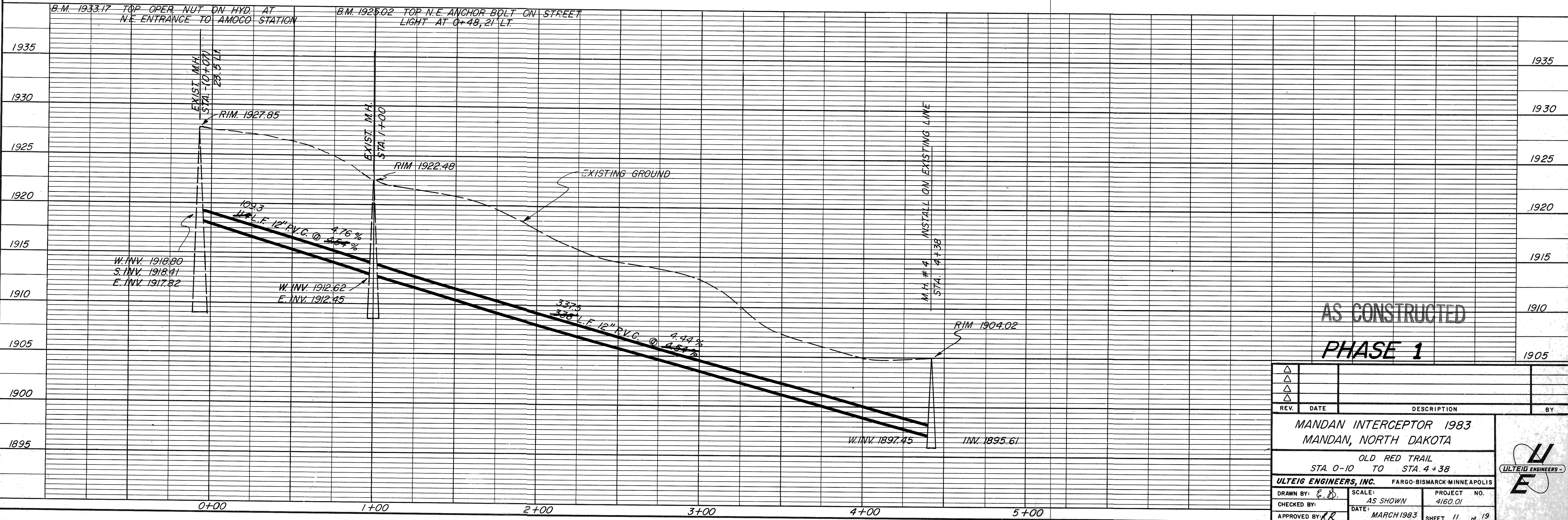
SUMMARY OF QUANTITIES	
12" PVC SEWER	452 L.F. 447
MANHOLES	1 Ea.
MANHOLE REWORK	2 Ea.
SEEDING (HYDROTURF)	0.4 Ac.
SODDING	39.4 S.Y.

M.H. REWORK "A" STA. (0+07) 23.5' L  
 REMOVE INSIDE DROP.  
 PLUG EXISTING OUTLET WITH CONCRETE.  
 REMOVE OUTSIDE DROP SECTION.  
 FILL BOTTOM WITH GRANULAR MATERIAL AND POUR NEW INVERT & SHELF.  
 REPLACE EXISTING COVER WITH SOLID COVER.  
 BREAK NEW 12" PVC. INTO E. SIDE  
 SEAL W/ GROUT. DETAIL 2/19

M.H. REWORK "B" STA. 1+00 6'  
 PLUG EXISTING PIPES WITH CONCRETE.  
 FILL BOTTOM WITH GRANULAR MATERIAL AND POUR NEW INVERT & SHELF (I-94 R/W)  
 BREAK NEW 12" PVC. INTO M.H.  
 SEAL W/ GROUT. DETAIL 3/19

STATE OF NORTH DAKOTA

NOTE: SODDING INSTALLED AT DOWNSTREAM END OF CULVERTS



AS CONSTRUCTED  
 PHASE 1

REV.	DATE	DESCRIPTION	BY

MANDAN INTERCEPTOR 1983  
 MANDAN, NORTH DAKOTA

OLD RED TRAIL  
 STA. 0-10 TO STA. 4+38

ULTEIG ENGINEERS, INC. FARGO-BISMARCK-MINNEAPOLIS

DRAWN BY: E.D. SCALE: AS SHOWN PROJECT NO. 4160.01  
 CHECKED BY: DATE: MARCH 1983 SHEET 11 of 19  
 APPROVED BY: [Signature]

