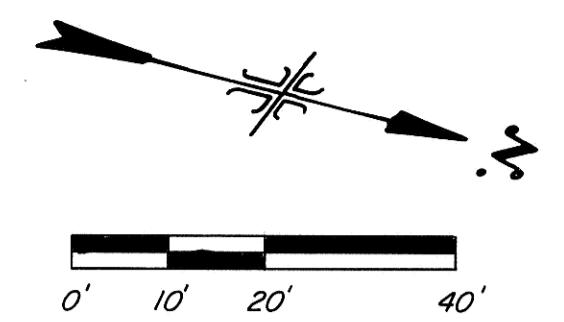


NOTE: Contractor to field verify location of all underground utilities prior to construction.

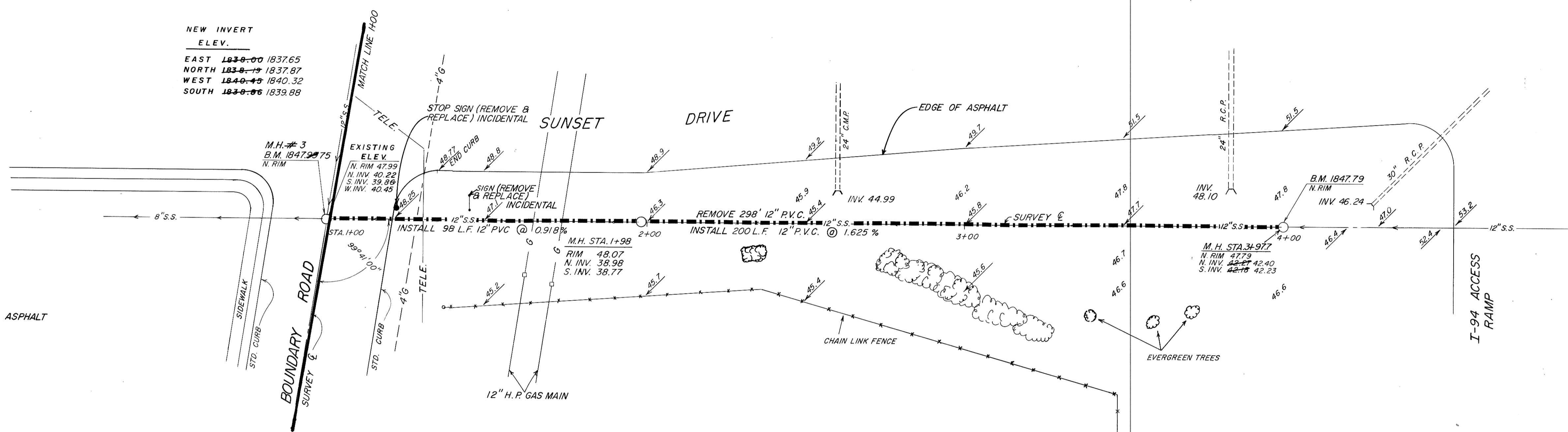
Seed Disturbed Area.



SEWER SERVICE LOCATION  
1+33 WEST

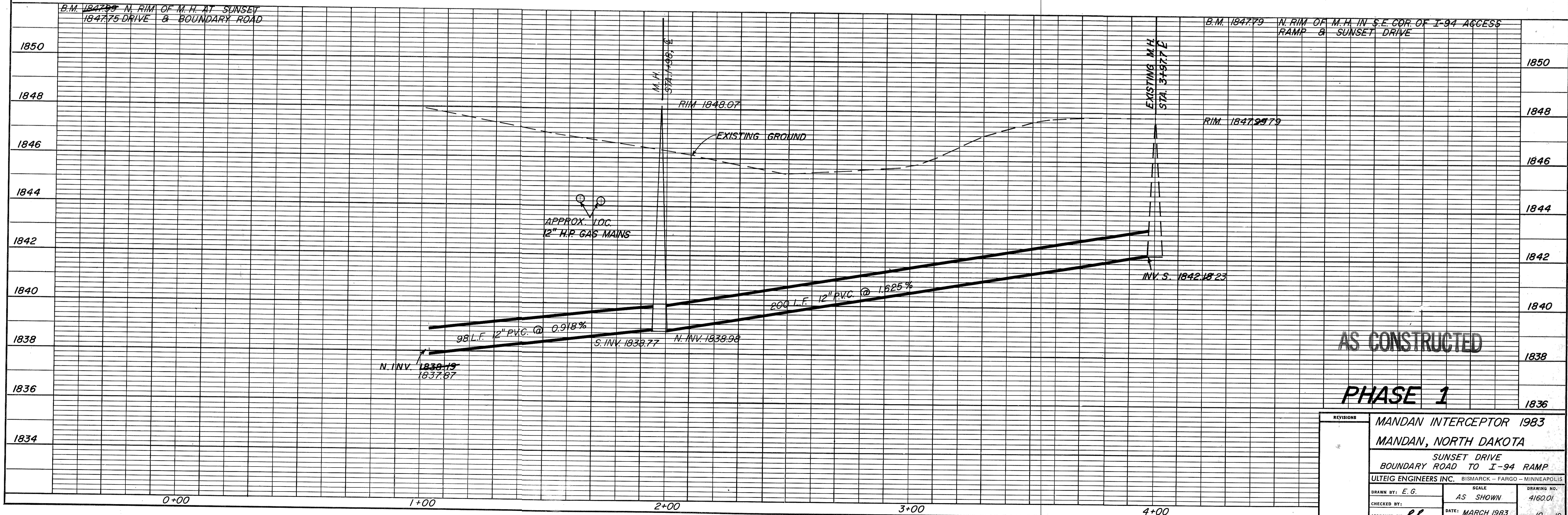
NEW INVERT ELEV.  
EAST 1839.00 1837.65  
NORTH 1838.19 1837.87  
WEST 1840.45 1840.32  
SOUTH 1839.86 1839.88

REMOVE & REPLACE EXISTING ASPHALT  
13' x 16' = 23 S.Y.  
16.5' x 16' = 29 S.Y.



SUMMARY OF QUANTITIES	
12" P.V.C. SEWER	298 L.F.
ASPHALT REMOVAL	
& REPLACEMENT	23.97 29 S.Y.
SEEDING	0.20 AC.
REMOVE SEWER PIPE	298 L.F.
REMOVE & REPLACE C.B.G.	15 L.F.
MANHOLE	1 E.A.
RECONNECT SEWER SERVICE	1 E.A.
4" SEWER SERVICE PIPE	2 L.F.

EXISTING M.H. STA. 3+97.7  
INSTALL NEW 12" P.V.C. IN EXISTING M.H. SEAL WITH GROUT.



AS CONSTRUCTED  
PHASE 1

REVISIONS	
MANDAN INTERCEPTOR 1983	
MANDAN, NORTH DAKOTA	
SUNSET DRIVE	
BOUNDARY ROAD TO I-94 RAMP	
ULTEIG ENGINEERS INC. BISMARCK - FARGO - MINNEAPOLIS	
DRAWN BY: E.G.	SCALE: AS SHOWN
CHECKED BY:	DATE: MARCH 1983
APPROVED BY: R.R.	SHEET 10 OF 19