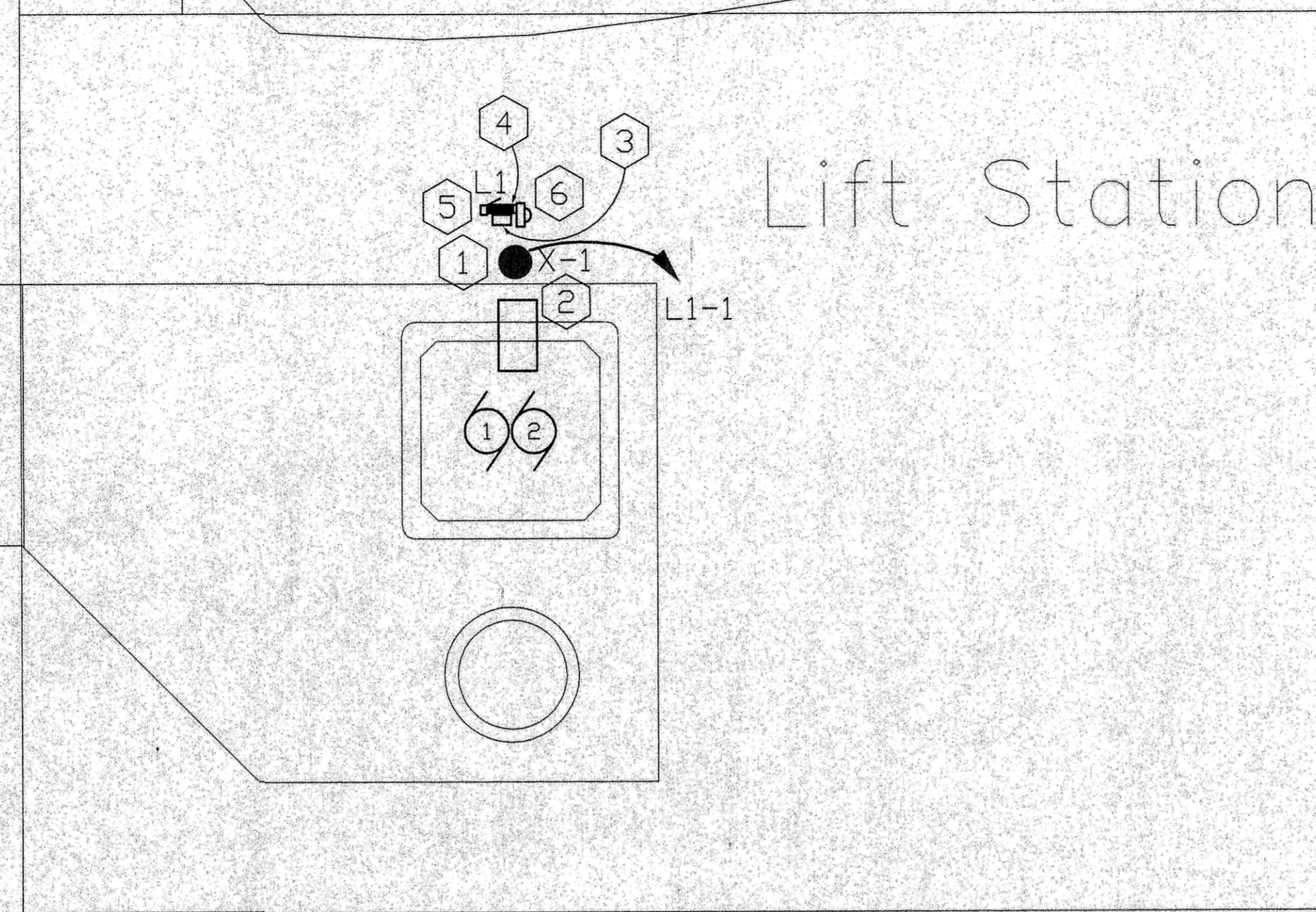


40TH AVENUE SE

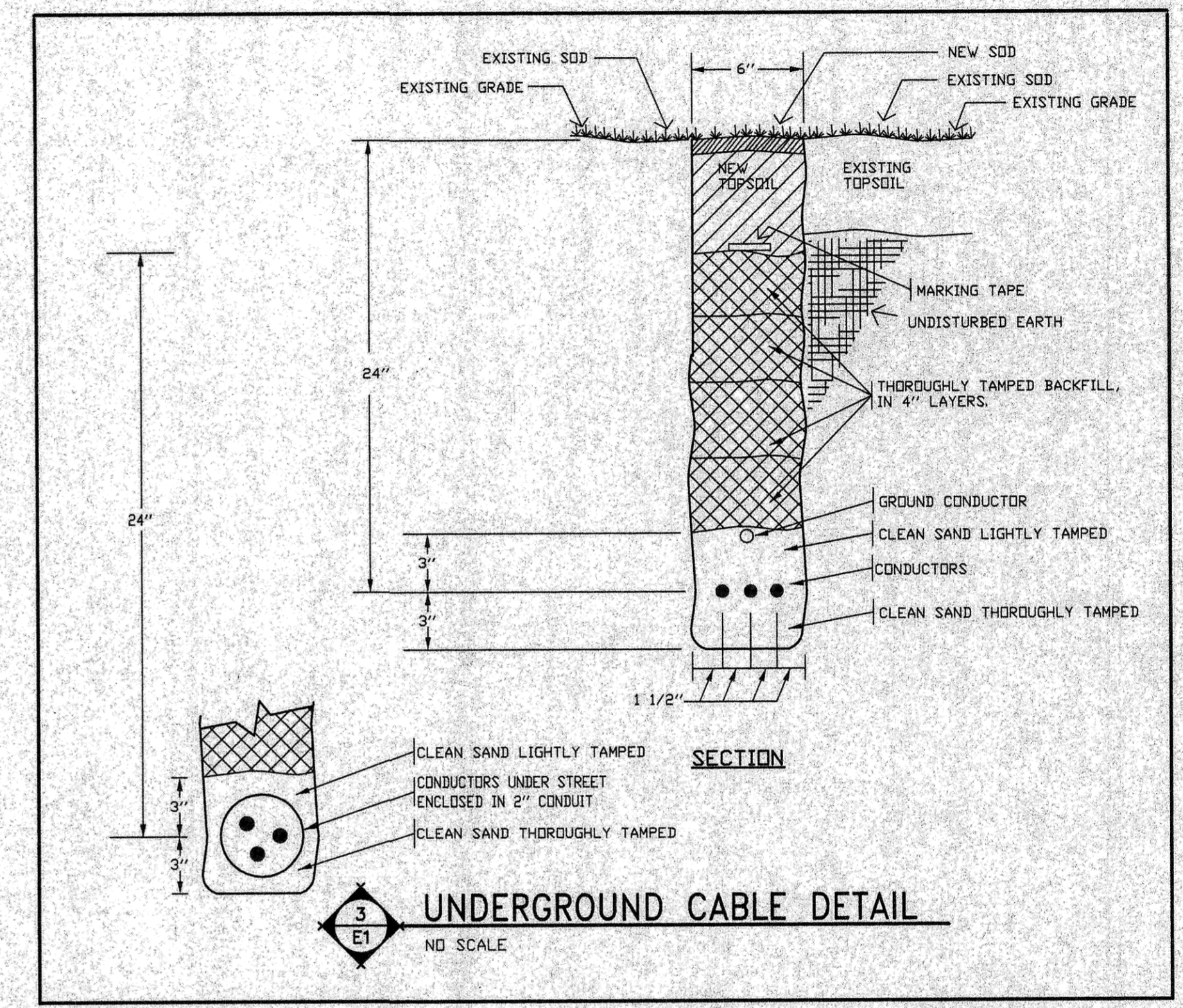


Lift Station

WARRANTY/ DISCLAIMER
 The designs represented in these plans are in accordance with established practices of civil engineering. However, neither Swenson, Hagen & Co. nor its personnel can or do warranty these plans as constructed except in the specific cases where Swenson, Hagen & Co. personnel inspect and control the physical construction on a full time basis.

SAFETY NOTICE TO CONTRACTOR
 In accordance with generally accepted construction practices the contractor will be solely and completely responsible for conditions of the job site, including safety of all persons and property during performance of the work. This requirement will apply continuously and not be limited to normal business hours.

NOTICE TO CONTRACTOR
 The location of existing underground utilities are shown in an approximate way only and have not been independently verified by the owner or its representatives. The Contractor shall determine the exact location of all existing utilities before commencing work, and agrees to be fully responsible for any and all damages which might be occasioned by the Contractor's failure to exactly locate and preserve any and all underground utilities. Underground locates shall be requested by using the "One Call" number 1-800-795-0555.



ELECTRICAL PLAN
 1/E1
 1/8" = 1'-0"

- NOTES: DETAIL 1/E1
- PLACE POLE SUCH THAT LUMINAIRE IS DIRECTLY ABOVE LIFT STATION MANHOLE. KEEP 12' MINIMUM VERTICAL CLEARANCE FROM BOTTOM OF LUMINAIRE TO TOP OF MANHOLE.
 - CONTROL PANEL CABINET. MOUNT CABINET ON CONCRETE COVER AS SHOWN AND AS PER SPECIFICATION, WITH DOOR OPENING TO THE WEST AND SWINGING TO THE NORTH.
 - RTU PANEL, SEE SPECIFICATION. MOUNT PANEL MINIMUM 3' ABOVE FINISH GRADE USING PROPER SUPPORTS.
 - MOUNT ONE DUPLEX GFCI TYPE RECEPTACLE IN WEATHER PROOF ENCLOSURE BELOW PANEL L1. WEATHER PROOF ENCLOSURE TO BE THE SAME AS TIME SWITCH ENCLOSURE. SEE SPECIFICATION.
 - TIMER CONTROL FOR STREET LIGHT. SEE SPECIFICATION. MOUNT TIMER ENCLOSURE IN BREAKER PANEL ENCLOSURE. *Installed Photo Eye on Fixture*
 - COORDINATE METER SOCKET LOCATION AND REQUIREMENTS WITH SERVING UTILITY. INSTALL METER SOCKET BEFORE SERVING UTILITY INSTALLS SECONDARY CONDUCTORS FROM THE POLE-MOUNTED TRANSFORMER TO THE METER.

SYMBOLS & LEGEND

○	EXISTING STREET LIGHT
●	NEW STREET LIGHT UNIT. NOMENCLATURE: TYPE A, RELAY #1, FIXTURE #2. ODD NUMBERS PHASE A, EVEN NUMBERS PHASE B.
□	FEEDPOINT - EXISTING
△	EXISTING JUNCTION BOX
▲	JUNCTION BOX - NEW
—	UNDERGROUND CONDUCTOR (DIRECT BURIAL)
≡	UNDERGROUND CONDUCTOR (CONDUIT ENCASED)
⊖	NUMBER OF CONDUCTORS (PLUS GROUND CONDUCTOR) EXAMPLE 3 #4 AVG
---	EXISTING UNDERGROUND CIRCUITRY

- GENERAL NOTES**
- FIELD VERIFY ALL PERTINENT EXISTING CONDITIONS AND INSTALLATION REQUIREMENTS IN CONNECTION WITH PROJECT. MAKE ALLOWANCES IN BID THERETO.
 - AT CONTRACTOR'S OPTION, IN LIEU OF EXPLOSION PROOF SEAL-OFFS AT CONTROL PANEL VENTILATED BASE (SEE DETAIL 3/E2), PROVIDE PVC MALE ADAPTER/BUSHING FOR FACTORY CABLES. SEAL ADAPTER WITH DUCT SEAL AND EXTEND CABLES UNSPLICED INTO BOTTOM OF CONTROL PANEL (CALL WITHIN CONTROL PANEL VENTILATED BASE).

03590

SWENSON, HAGEN & CO. P.C.
 PLANNING CIVIL ENGINEERING SURVEYING
 SITE DESIGN CONSTRUCTION MANAGEMENT
 908 BASIN AVE P.O. BOX 1186 (701) 223-2800
 BISMARCK, N.D. 58504 FAX (701) 223-2604
 E-mail: shng@btqgate.com

40th Avenue SE Lift Station
 SEWER IMPROVEMENTS—LIFT STATION ADDITION

SEWER IMPROVEMENT PROJECT 2003-15
 DISTRICT # 28 SHEET E1 OF 2
 MANDAN, ND OCTOBER 30, 2003

DESIGN: JJB DRAFT: JJB

Record Drawing