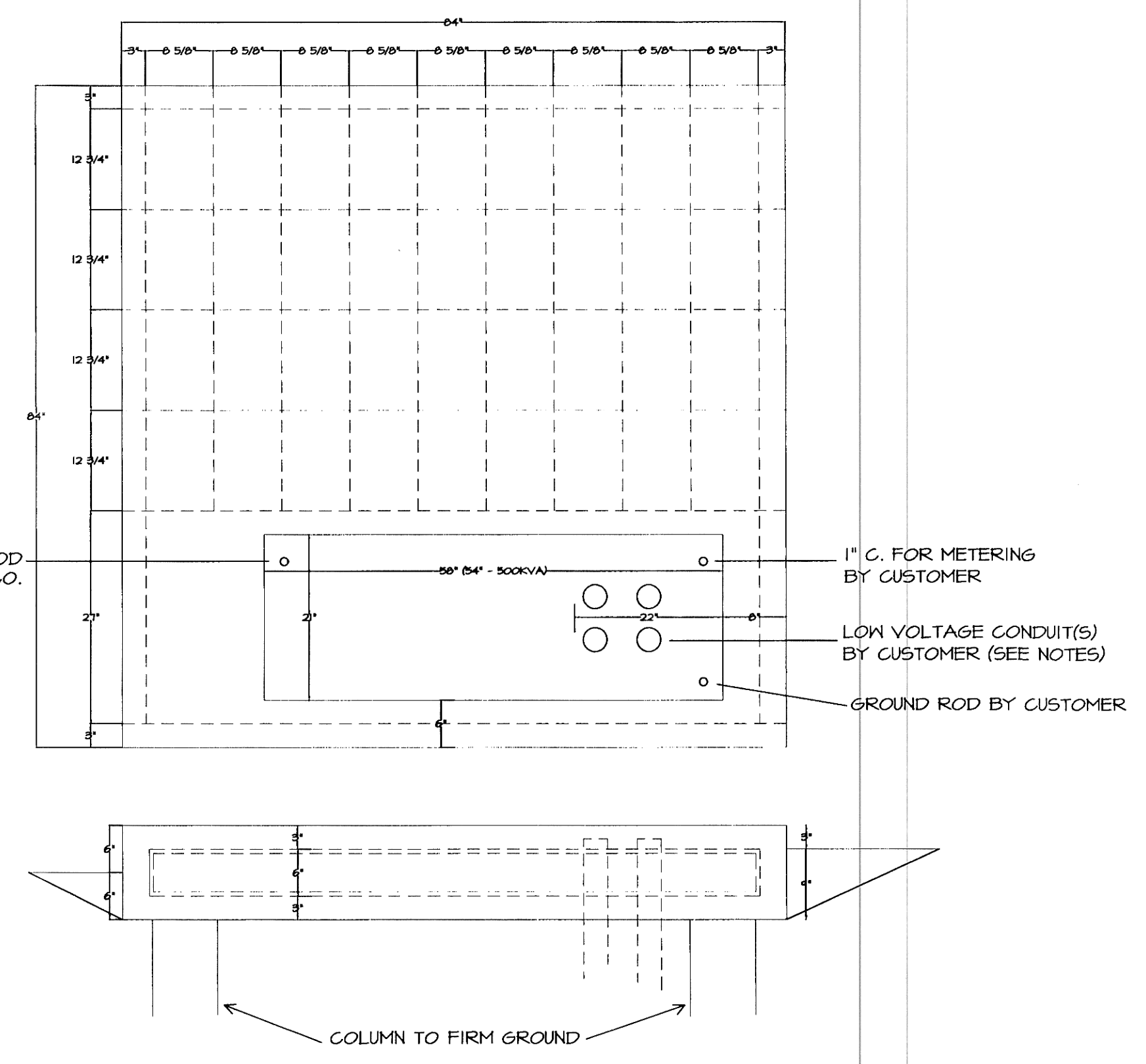


SITE PLAN - ELECTRICAL
SCALE: 1"=10'-0"
NORTH



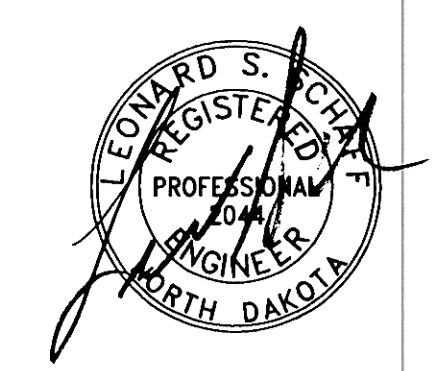
- TRANSFORMER LOCATION**
- ENTIRE PAD MUST BE FIVE FEET FROM ANY BUILDING.
 - ALL OIL FILLED PAD MOUNTED TRANSFORMERS MUST BE INSTALLED SO ANY FLOW OF OIL RESULTING FROM A FAILURE OF THE TRANSFORMER WILL FLOW AWAY FROM ANY STRUCTURE.
 - A TRANSFORMER SHOULD BE LOCATED AWAY FROM TRAFFIC AREAS OR PROTECTED WITH A SUITABLE BARRIER SUCH AS CONCRETE FILLED PIPE, PROVIDED BY THE CUSTOMER.
 - WHEN LOCATING PAD CONSIDER OVERHEAD CLEARANCE FOR POSSIBLE TRANSFORMER REPLACEMENT.
 - COMPACT SOIL TO AVOID TILTING AND SETTLING. COLUMNS REQUIRED EXCEPT ON FIRM GROUND.

MARK	QUANTITY	SIZE	LENGTH	DESCRIPTION
S12	32	1/2"	8"	8"
S14	16	1/2"	53"	53"
S15	16	1/2"	80"	80"

NOTES: REINFORCING STEEL MUST BE SECURED WITH TIE WIRE AT ALL INTERSECTIONS.
ALL EXPOSED EDGES AND CORNERS TO HAVE 1" CHAMFER.
1,496 CUBIC YARDS OF CONCRETE.
LOW VOLTAGE CONDUIT BY CUSTOMER MUST BE INSTALLED WITHIN 22" AREA NOTED.
S12 MUST BE LOCATED INSIDE OF OTHER BARS.

TRANSFORMER DETAIL
NO SCALE

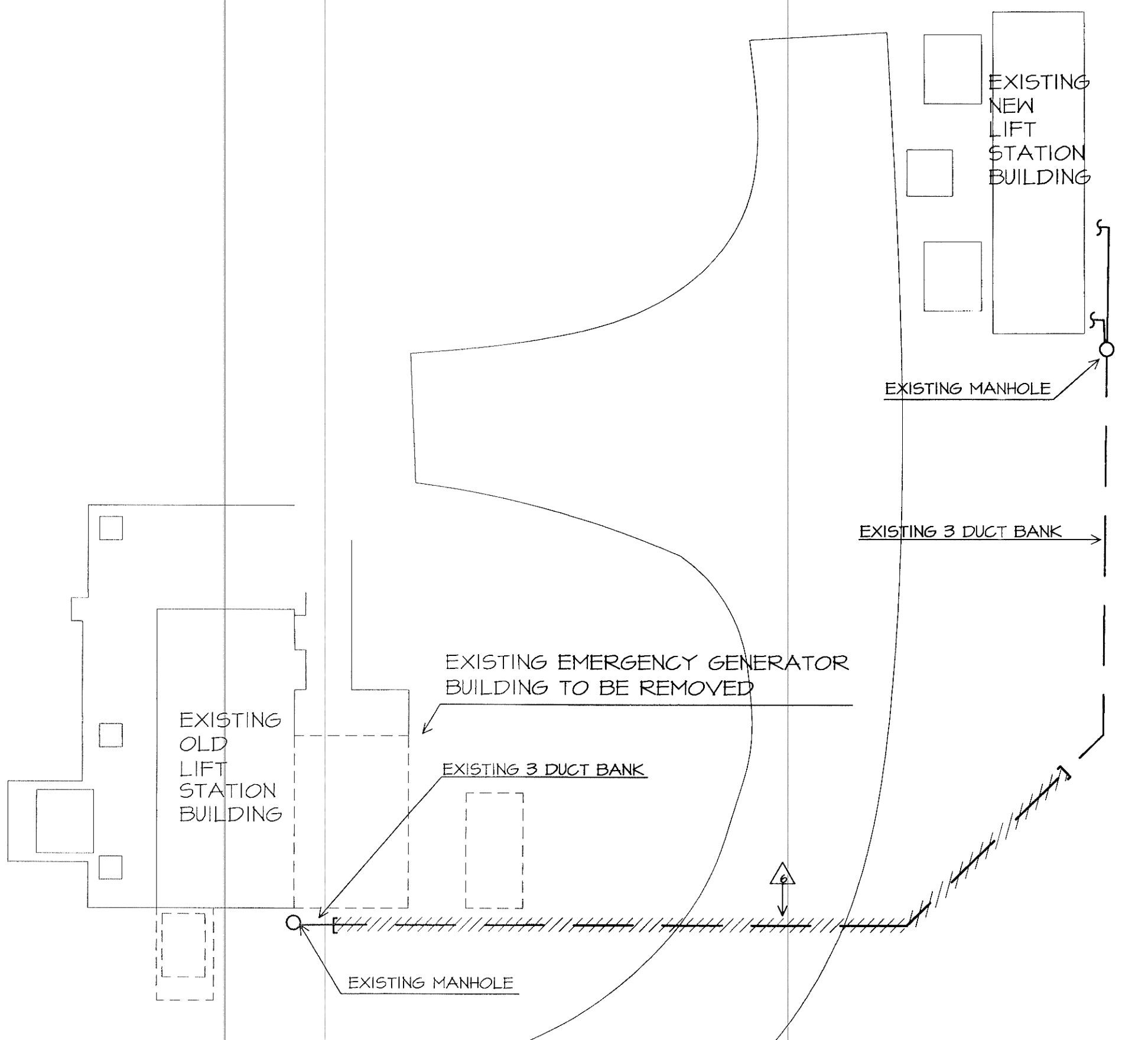
- DEMOLITION NOTES**
- REMOVE ATS AND GENERATOR. EG SHALL TRANSPORT TO LOCATION WITHIN CITY AS DIRECTED BY ENGINEER.
 - REMOVE SOFT START STARTER FROM EXISTING SWITCHGEAR AND INSTALL IN NEW NEMA 4 ENCLOSURE FOR M#3.
 - REMOVE METERING CONDUIT SOCKETS.
 - REMOVE AND REUSE AS U#1. REMOVE AND REUSE STAT.
 - REMOVE EXISTING ANNUNCIATOR AND TURN OVER TO GENERATOR CONTRACTOR.
 - REMOVE WIRING AND DUCT BANK.
 - DISCONNECT EXISTING FAN MOTOR.
 - REMOVE AND REUSE CONTROL U#1.



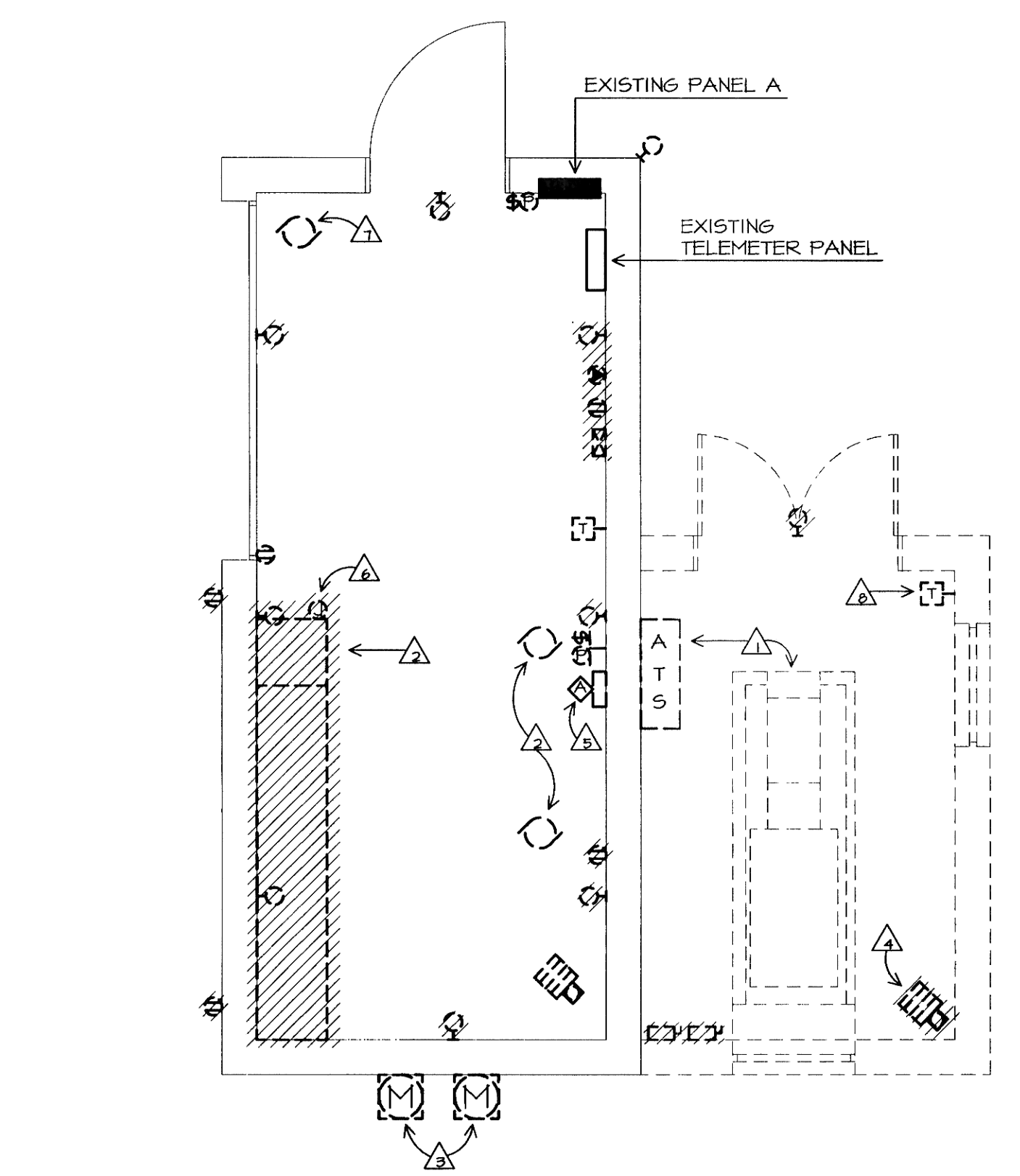
ELECTRICAL SYMBOLS

SYMBOL	DESCRIPTION	MOUNTING HEIGHT
(Symbol: Arc with A-125)	HOMERUN TO PANEL BOARD, CROSSMARKS INDICATE QUANTITY OF CONDUCTORS (NOT INCLUDING GROUND CONDUCTOR). NO MARKS INDICATE TWO CONDUCTORS. ARROWS INDICATE QUANTITY OF CIRCUITS. LETTERS AND NUMBERS INDICATE PANEL AND CIRCUITS. PROVIDE CODE SIZED GROUND CONDUCTOR IN EACH CONDUIT.	
(Symbol: Circle)	REFERS TO PLAN NOTES	
(Symbol: Circle with dot)	CEILING FIXTURE	48"
(Symbol: Circle with cross)	HALL FIXTURE	
(Symbol: Rectangle with horizontal lines)	FLUORESCENT FIXTURE	
(Symbol: Square with S)	SINGLE POLE SWITCH	
(Symbol: Circle with P)	PILOT LIGHT	
(Symbol: Circle with DP)	DUPLEX CONVENIENCE RECEPTACLE	
(Symbol: Circle with WP)	WEATHER PROOF DUPLEX CONVENIENCE RECEPTACLE	
(Symbol: Circle with J)	JUNCTION BOX	
(Symbol: Dashed line)	CONDUIT IN HALL OR CEILING	
(Symbol: Solid line)	CONDUIT IN FLOOR OR UNDERGROUND	
(Symbol: Circle with dot)	CONDUIT STUB-UP	
(Symbol: Circle with dot)	CONDUIT STUB-DOWN	
(Symbol: Square with X)	COMBINATION STARTER/DISCONNECT	
(Symbol: Square with M)	MOTOR CONTROLLER	
(Symbol: Square with D)	DISCONNECT	
(Symbol: Square with E)	ELECTRICAL PANEL	
(Symbol: Square with ED)	ELECTRICAL DISTRIBUTION PANEL	
(Symbol: Circle with M)	MOTOR	
(Symbol: Square with X)	INDICATES ITEMS TO BE REMOVED	
(Symbol: Square with G)	GENERATOR ANNUNCIATOR	

- PLAN NOTES**
- CONNECT BATTERY CHARGER, DAMPERS, AND ENGINE HEATER TO EXISTING PANEL IN EXISTING NEW LIFT STATION. VERIFY WITH ENGINEER PRIOR TO CONNECTION.
 - PROVIDE 3 #500 MCM, 1 #1/0 + 1 #2 IN 4" DUCT BETWEEN 400/3 IN NEW SWITCHBOARD AND SWITCH GEAR IN EXISTING NEW LIFT STATION BUILDING. PROVIDE 1#12 IN 2" DUCT. RECONNECT 13 AS PREVIOUSLY CONNECTED AND CONNECT 4 NEW TO ATS TO SEQUENCE PUMPS IN EXISTING NEW LIFT STATION BUILDING.



SITE PLAN - DEMOLITION
SCALE: 1"=10'-0"
NORTH



EXISTING OLD LIFT STATION - DEMOLITION
SCALE: 1/4"=1'-0"
NORTH