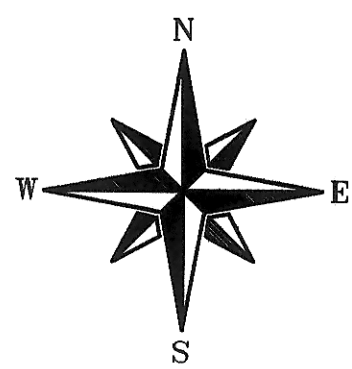
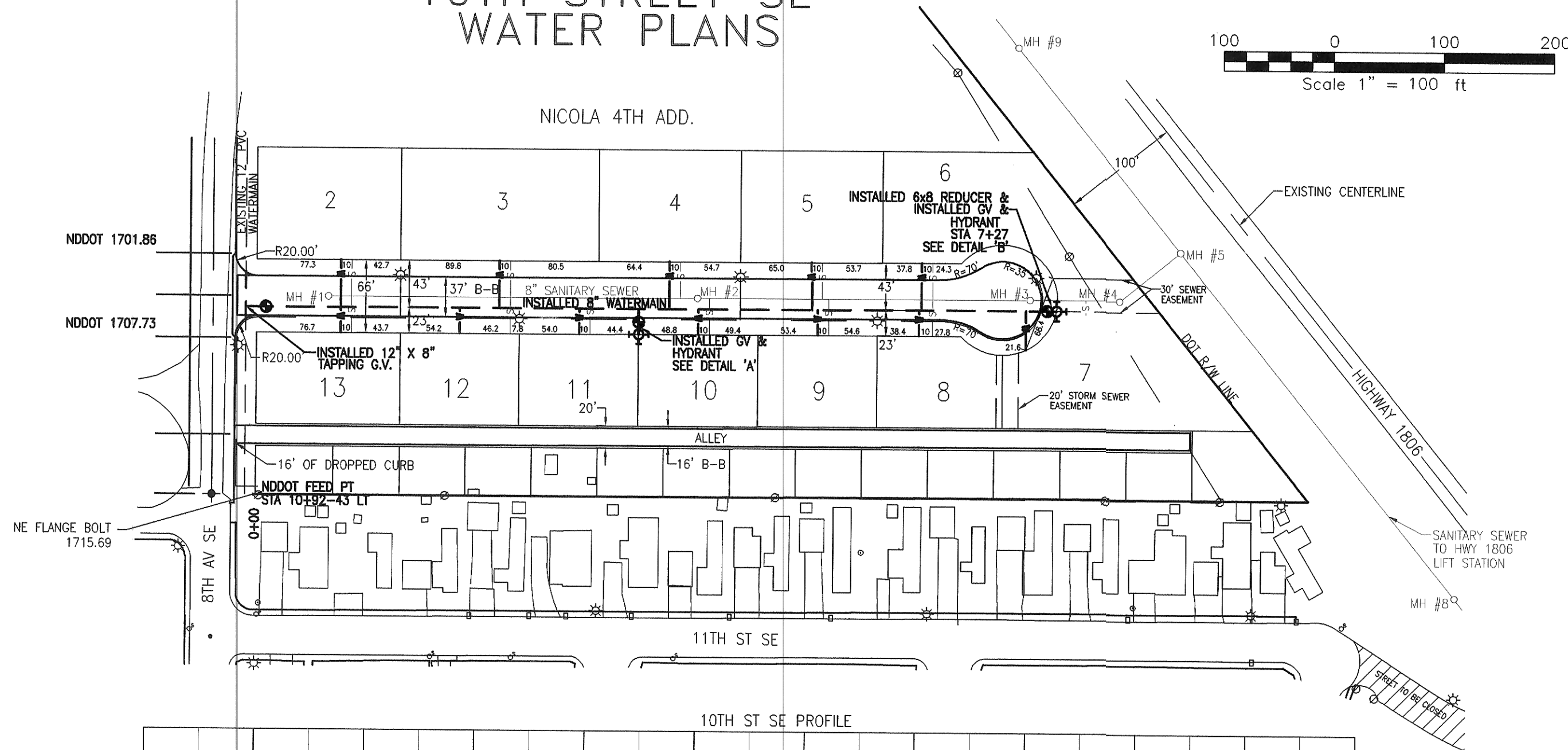


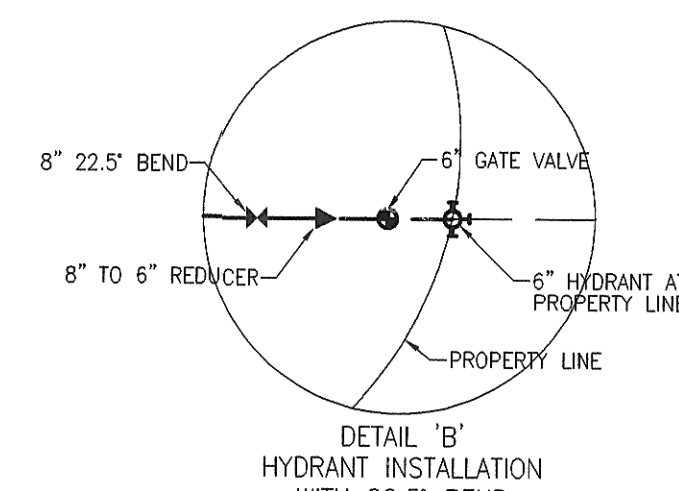
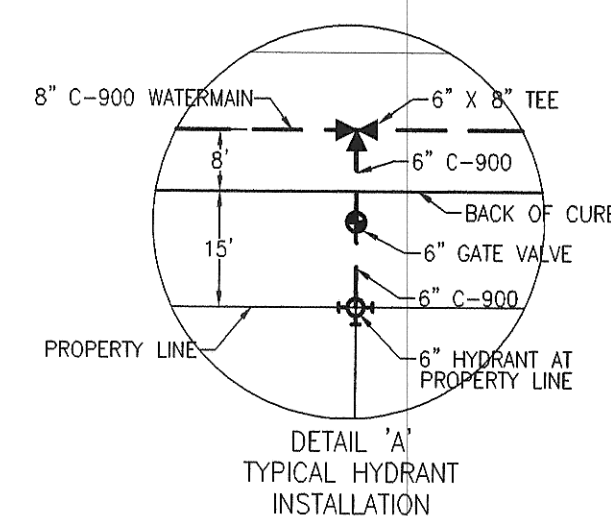
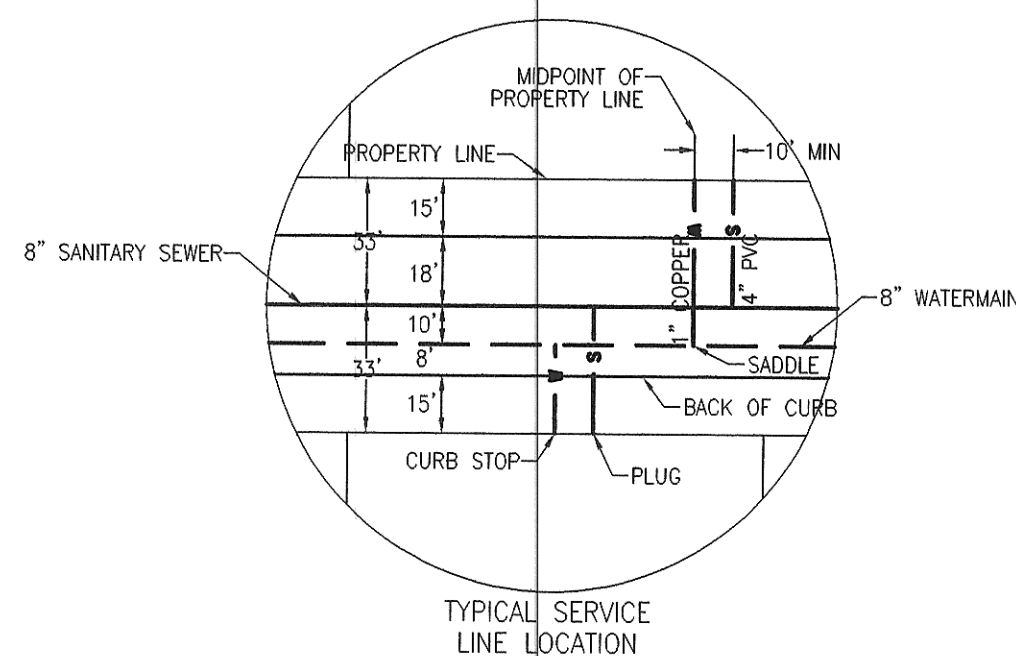
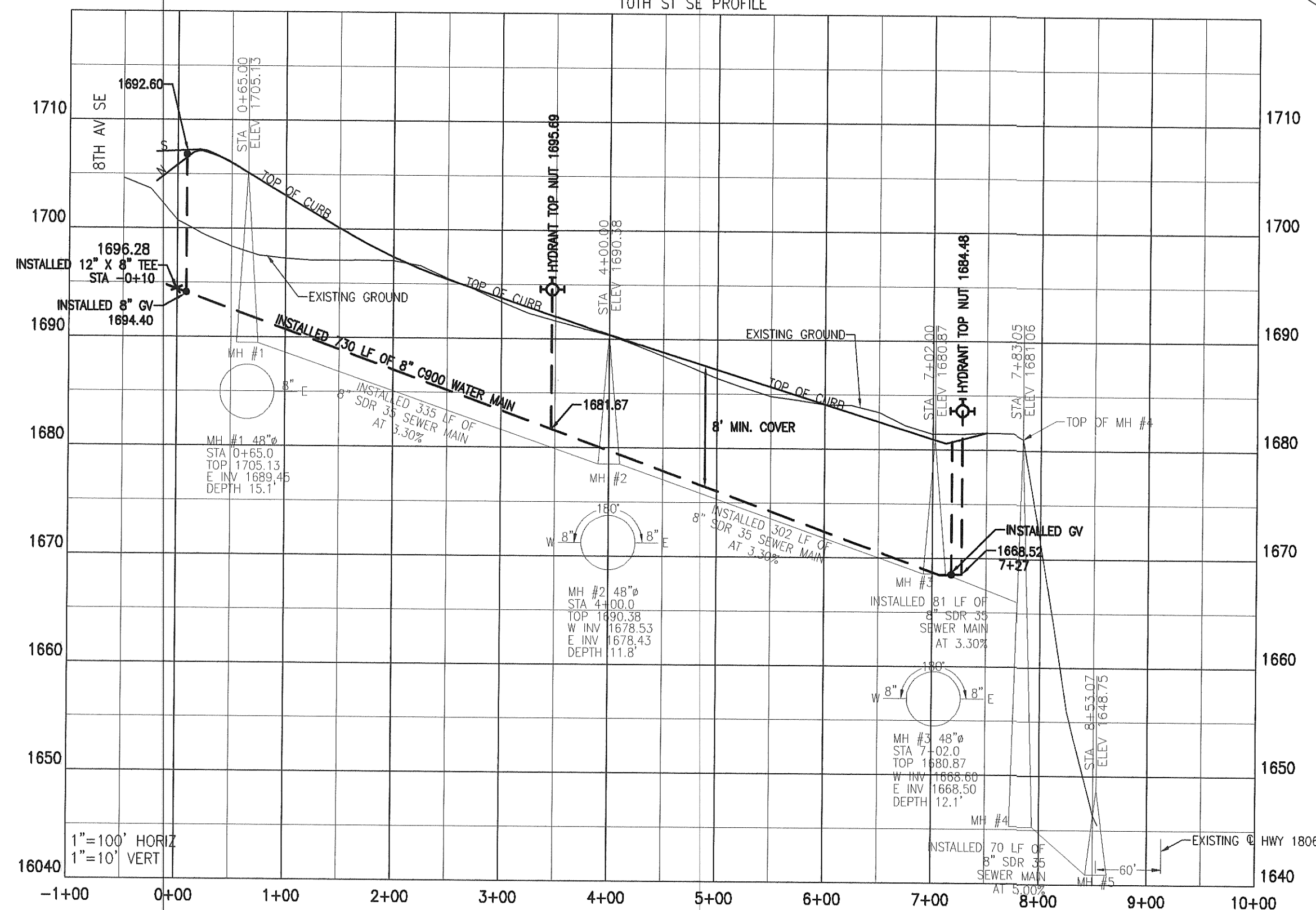
# WATER & SEWER PLANS 10TH STREET SE



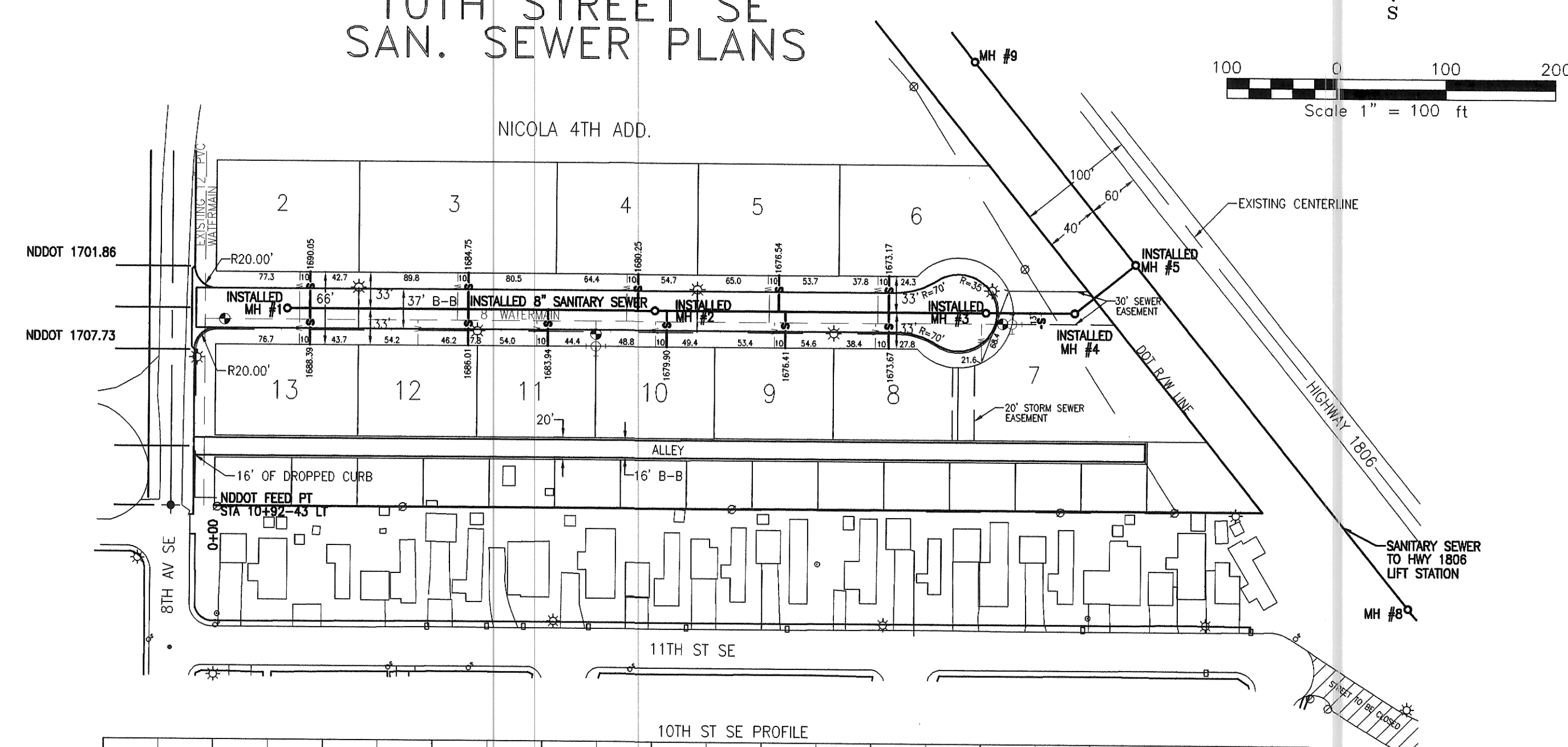
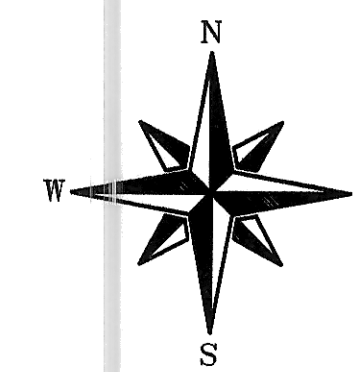
## 10TH STREET SE WATER PLANS



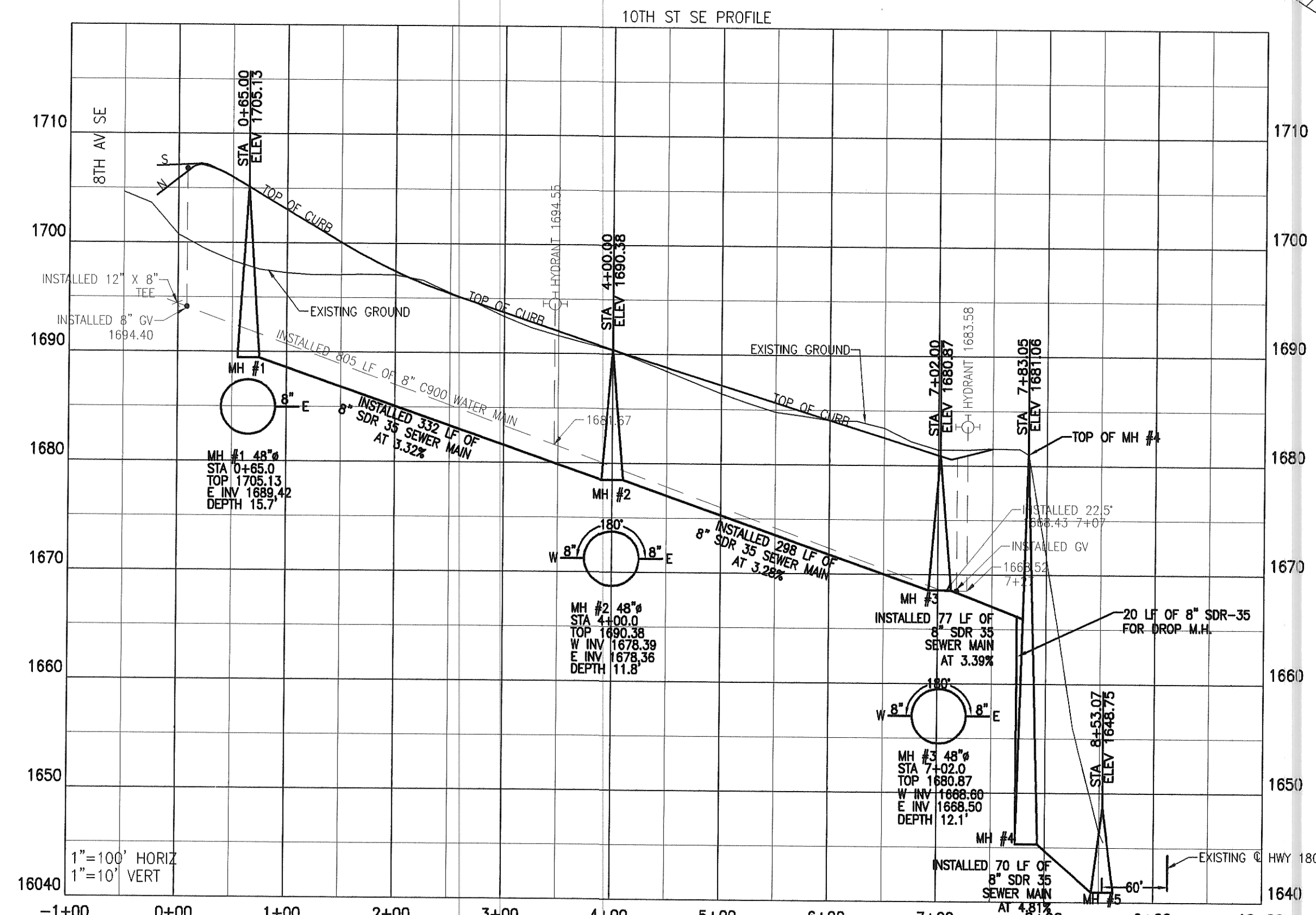
10TH ST SE PROFILE



## 10TH STREET SE SAN. SEWER PLANS



10TH ST SE PROFILE



- LEGEND**
- PAVED ROAD
  - BUILDING
  - UTILITY POLE
  - LIGHT POLE
  - MANHOLE, CATCH BASIN
  - SIGN, FLAGPOLE
  - BOUNDARY
  - POWER
  - NEW ROAD
  - WATER SERVICE LINE
  - SANITARY SEWER SERVICE LINE

**CAUTION**  
LOCATE ALL BURIED  
UTILITIES BEFORE DIGGING  
OVERHEAD POWER



TOMAN ENGINEERING COMPANY  
CONSULTING CIVIL & ENVIRONMENTAL ENGINEERS  
902 2ND ST. N.W. • MINNAPOLIS, MINN. 55401 • 763-445-4400

PROJECT: WATER & SEWER DISTRICT NO. 40 - AREA "A" CITY PROJECT NO. 96-9

| NO. | BY        | DATE | REVISIONS  |
|-----|-----------|------|------------|
| 1   | AS-BUILTS | 2/09 | DATE: 2-97 |
|     |           |      | DATE:      |
|     |           |      | DATE:      |

TITLE: 10TH STREET SE & ALLEY

SHEET NUMBER  
**5**  
OF 11 SHEETS