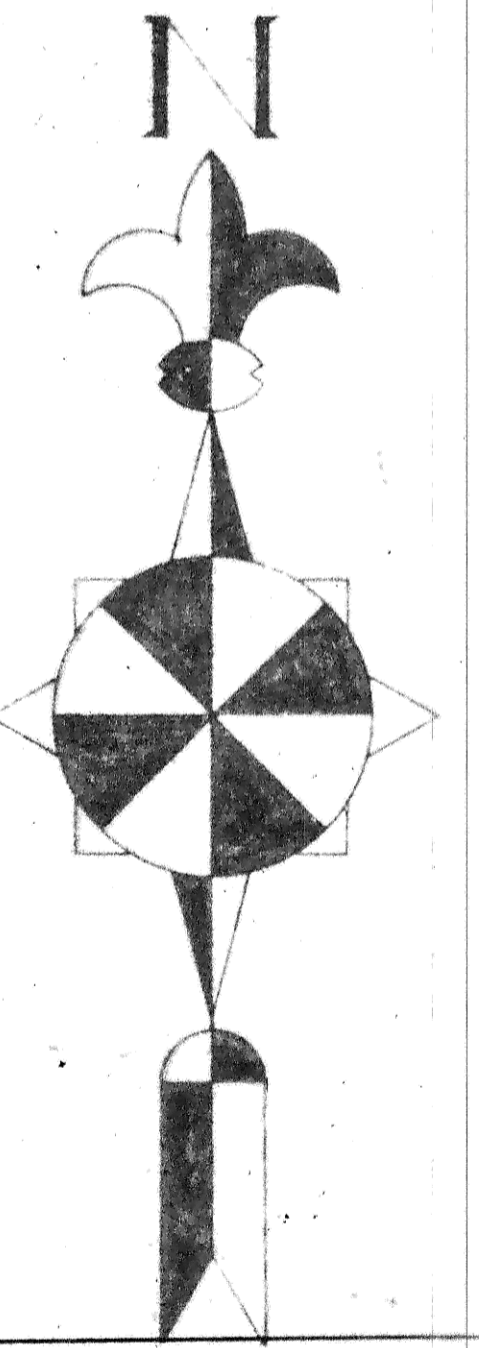
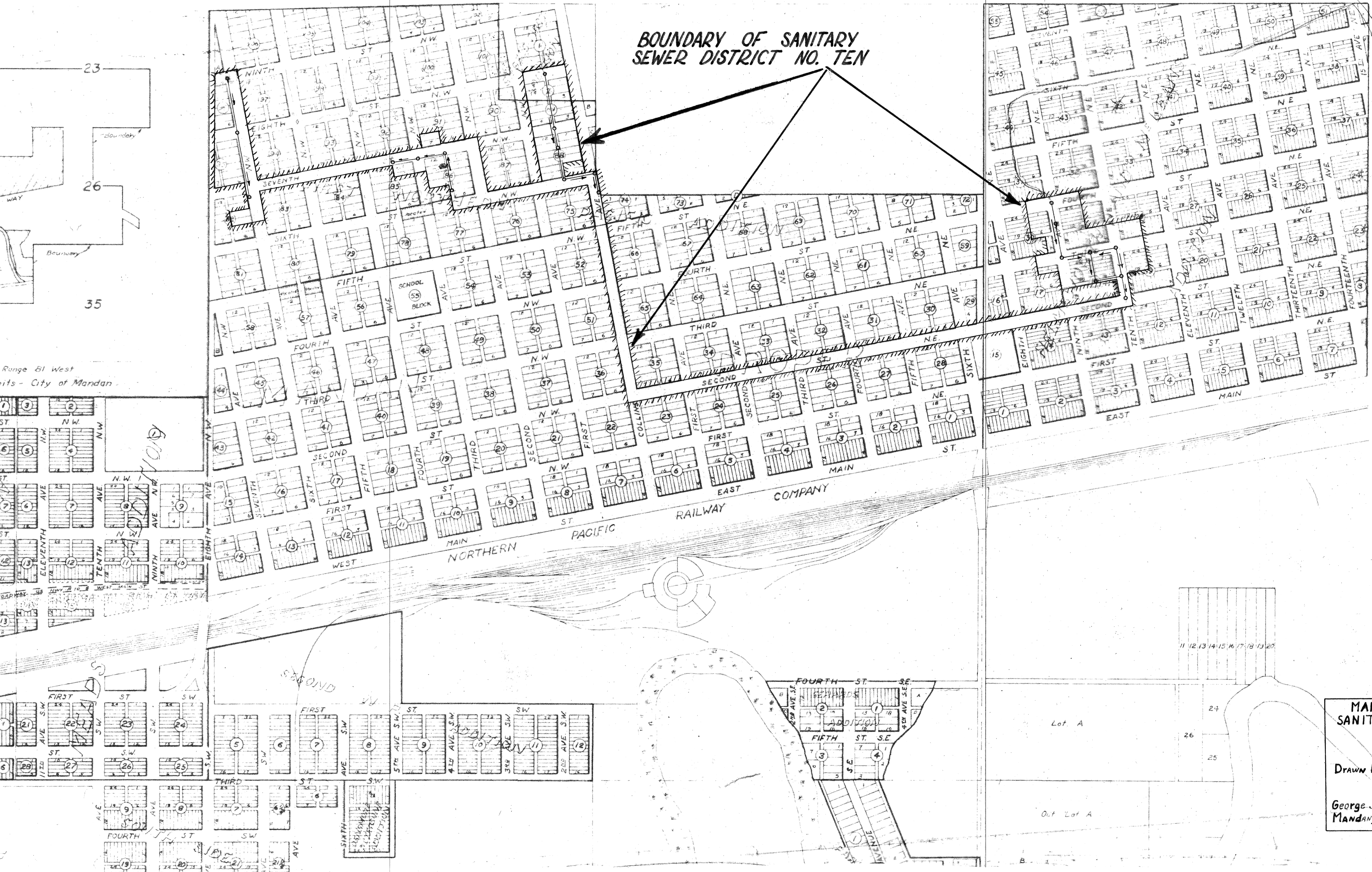


**BOUNDARY OF SANITARY
SEWER DISTRICT NO. TEN**



**MANDAN NORTH DAKOTA
SANITARY SEWER DISTRICT
NO. TEN
SCALE:**
Drawn By: *[Signature]* Checked By: *[Signature]*
SHEET NO: 1
George J. Toman Consulting Engineer
Mandan, N. Dak. September 14, 1950