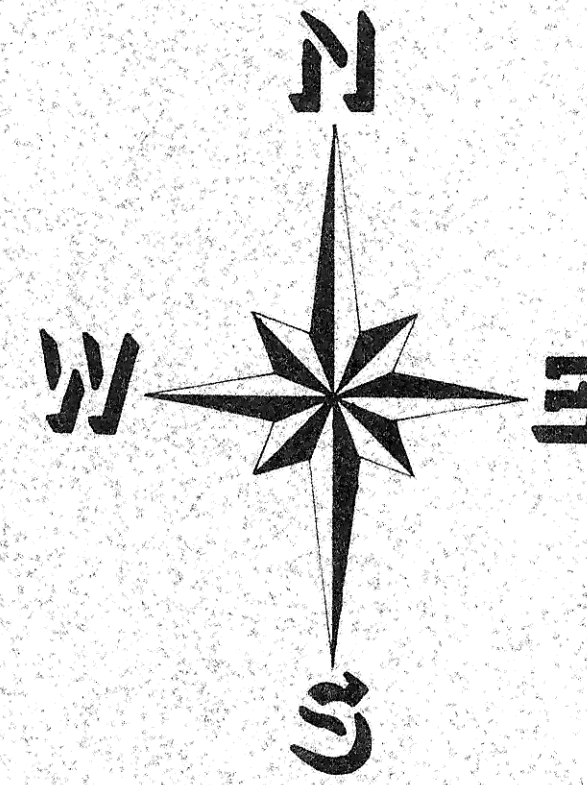
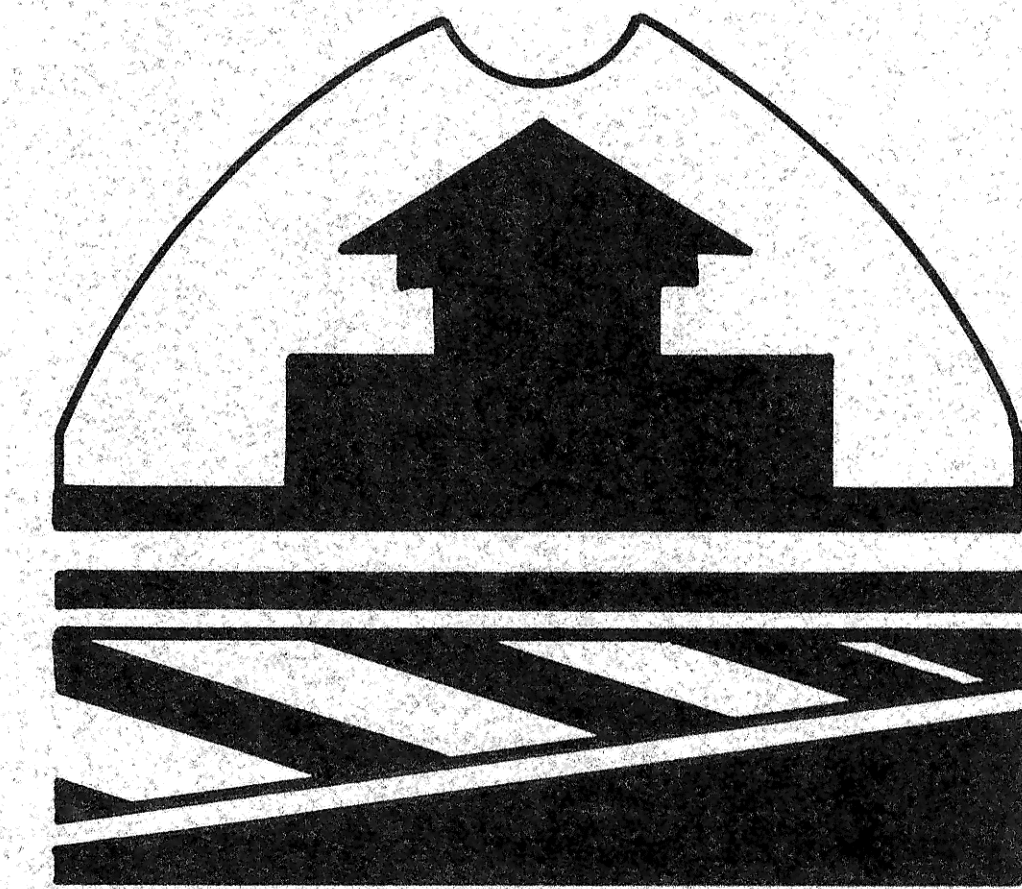
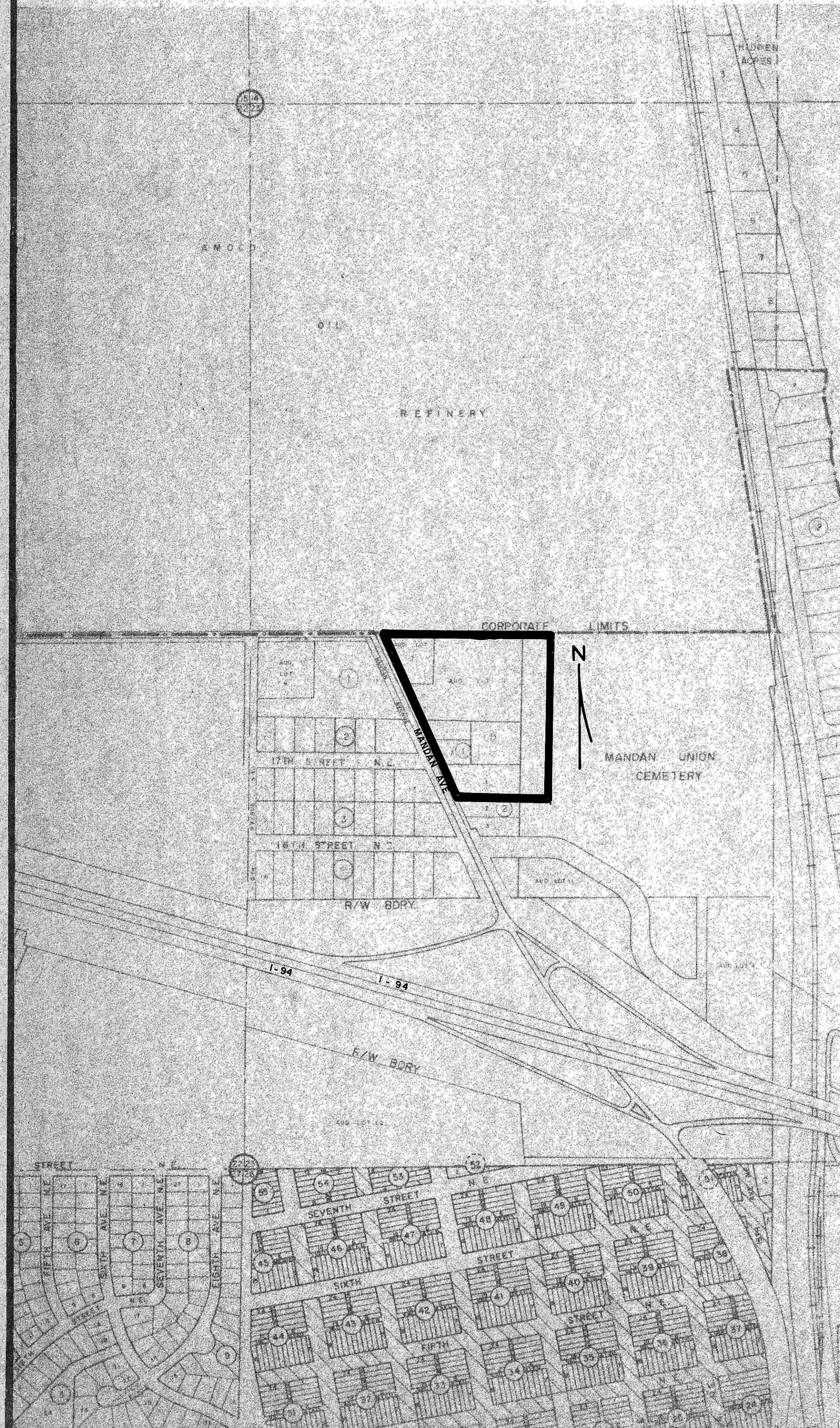


CITY OF MANDAN



| EXISTING | LEGEND | PROPOSED |
|----------|-------------|----------|
| SS | STORM SEWER | SS |
| S | SAN SEWER | S |
| W | WATER MAIN | W |
| ⊕ | HYDRANT | ⊕ |
| ⊕ | VALVE | ⊕ |
| Y | WYE | Y |



ENGINEER'S CERTIFICATE

I, THOMAS R. LITTLE, A REGISTERED PROFESSIONAL ENGINEER, HEREBY CERTIFY THAT THE ATTACHED PLANS WERE PREPARED UNDER MY SUPERVISION AND ARE COMPLETE AND CORRECT TO THE BEST OF MY KNOWLEDGE AND BELIEF.

Thomas R. Little
 THOMAS R. LITTLE, P.E.
 CITY ENGINEER - MANDAN, N.D. DAKOTA

| INDEX | |
|--------------|---|
| SHEET 1 of 2 | Location Map |
| SHEET 2 of 2 | Watermain installation between Dan Dugan Transport Co. and Northern Tankline property |

WATER IMPROVEMENT DISTRICT NO. 7

PROJECT NO. 83 - 1

AS-BUILT

7