

CONSTRUCTION PLANS FOR
WATER & SEWER
IMPROVEMENTS IN
PLAINVIEW HEIGHTS 7TH ADDITION
Mandan, North Dakota

DESIGN ENGINEER'S CERTIFICATE
I, MARK S. SWENSON, A REGISTERED PROFESSIONAL ENGINEER IN THE STATE OF NORTH DAKOTA, HEREBY CERTIFY THAT THE PLANS FOR WATER & SANITARY SEWER IMPROVEMENT PROJECT NO. 2001-08, MANDAN, NORTH DAKOTA WERE PREPARED UNDER MY SUPERVISION AND ARE COMPLETE AND CORRECT TO THE BEST OF MY KNOWLEDGE AND BELIEF.



Mark S. Swenson
MARK S. SWENSON, P.E.
REGISTERED PROFESSIONAL ENGINEER
NORTH DAKOTA REGISTRATION NO. 3624

APPROVAL OF CITY ENGINEER
I, THOMAS LITTLE, CITY ENGINEER FOR THE CITY OF MANDAN, NORTH DAKOTA, HEREBY APPROVE THESE PLANS FOR WATER & SANITARY SEWER IMPROVEMENT PROJECT NO. 2001-08, MANDAN, NORTH DAKOTA AS SHOWN ON THE ACCOMPANYING PLANS.

THOMAS LITTLE, P.E.
REGISTERED PROFESSIONAL ENGINEER
CITY ENGINEER
MANDAN, NORTH DAKOTA

DEVELOPER
MITZEL BUILDERS, INC.
224-8083

OWNER
CITY OF MANDAN PUBLIC WORKS

DESIGN ENGINEER
SWENSON, HAGEN & CO.

SHEET INDEX

TITLE PAGE	SHEET 1
9TH AVE SE/10TH AVE SE	SHEET 2
PLAINVIEW DRIVE	SHEET 3

WARRANTY / DISCLAIMER

The designs represented in these plans are in accordance with established practices of civil engineering. However, neither Swenson, Hagen & Co. nor its personnel can or do warranty these plans as constructed except in the specific cases where Swenson, Hagen & Co personnel inspect and control the physical construction on a full time basis.

SAFETY NOTICE TO CONTRACTOR

In accordance with generally accepted construction practices the Contractor will be solely and completely responsible for conditions of the job site, including safety of all persons and property during performance of the work. This requirement will apply continuously and not be limited to normal business hours.

UTILITY NOTICE TO CONTRACTOR

The location of existing underground utilities are shown in an approximate way only and have not been independently verified by the Owner or its representatives. The Contractor shall determine the exact location of all existing utilities before commencing work, and agrees to be fully responsible for any and all damages which might be occasioned by the Contractor's failure to exactly locate and preserve any and all underground utilities. Underground locates can be made by using the "One Call" number 1-800-795-0555.

BAHM'S 1ST

PRIVATE PROPERTY OF OTHERS

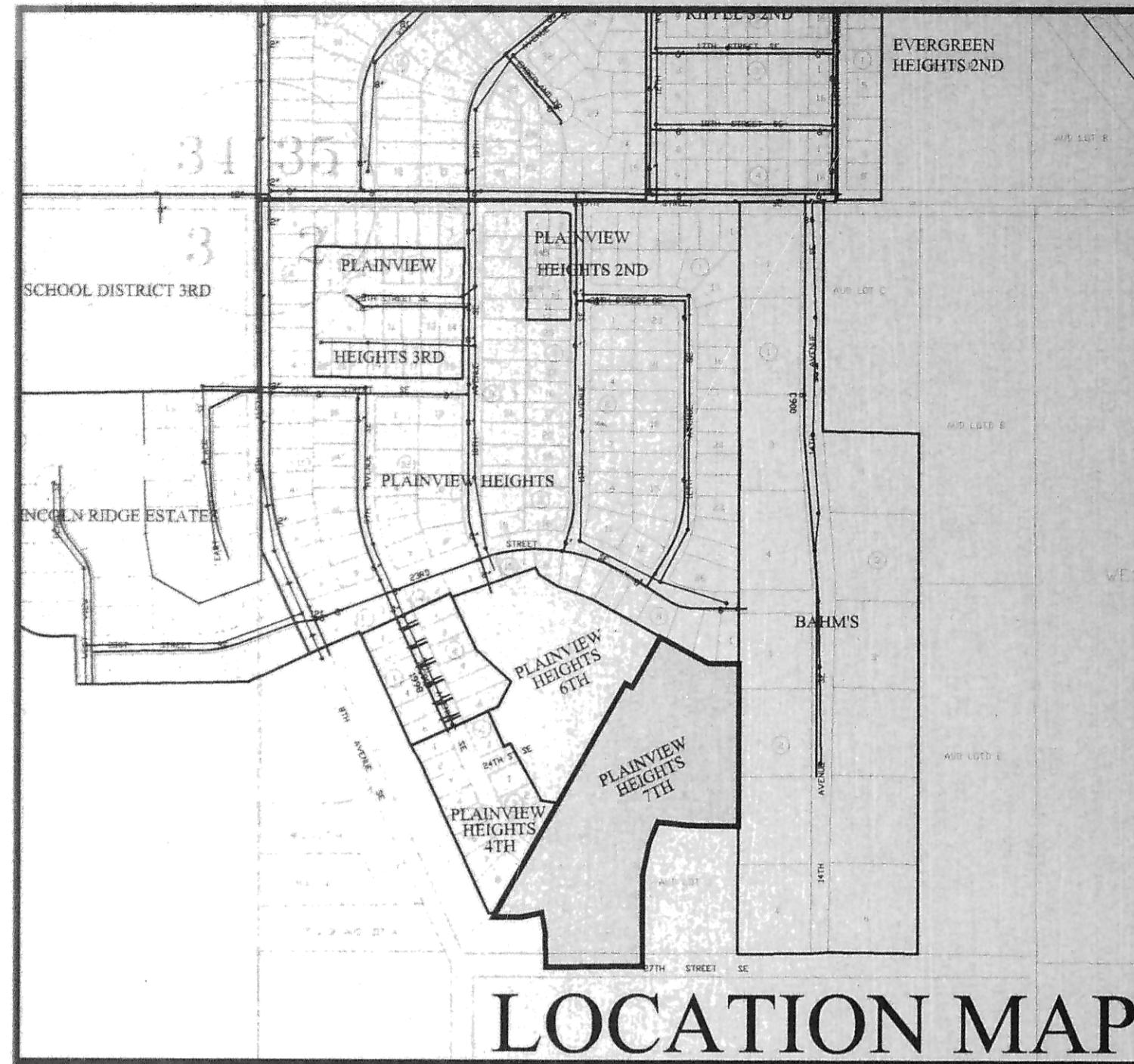
UNPLATTED MITZEL PROPERTY

END IMPROVEMENTS PHASE B

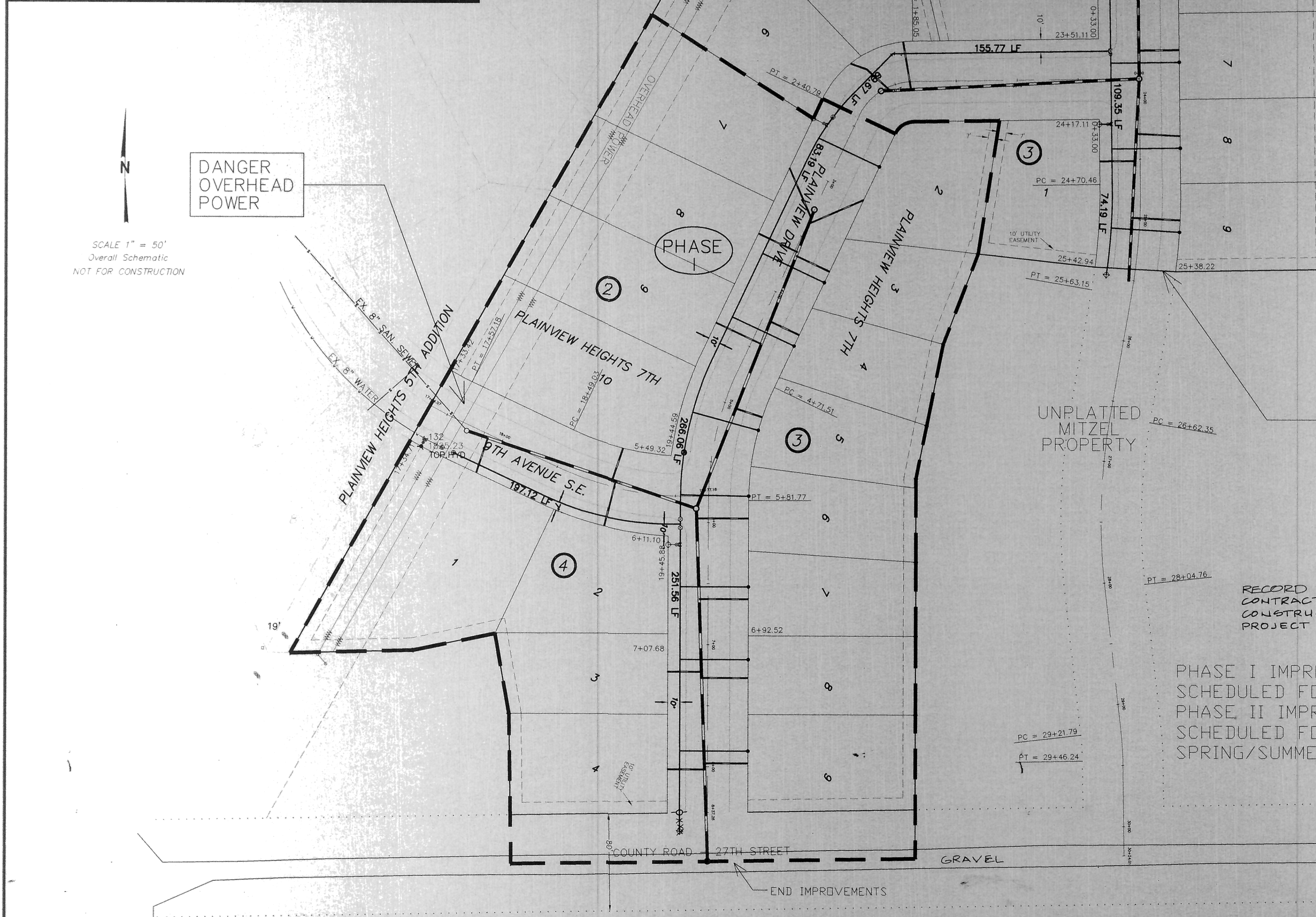
RECORD DRAWINGS 12-21-01
CONTRACTOR: GRABINGER EX.
CONSTRUCTED: SUMMER 01
PROJECT REVIEW: MARK SWENSON P.E.

PHASE I IMPROVEMENTS ARE SCHEDULED FOR SUMMER OF 01.
PHASE II IMPROVEMENTS ARE SCHEDULED FOR THE SPRING/SUMMER OF 02.

7



LOCATION MAP



SCALE 1" = 50'
Overall Schematic
NOT FOR CONSTRUCTION

DANGER OVERHEAD POWER

PHASE I

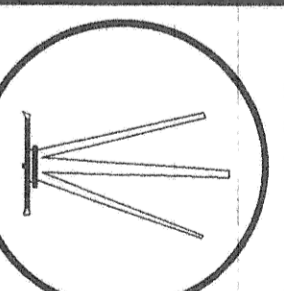
PHASE II

END IMPROVEMENTS

FINAL

WATER & SANITARY SEWER
IMPROVEMENT PROJECT NO. 2001-08

SWENSON, HAGEN & CO. P.C.
PLANNING CIVIL ENGINEERING SURVEYING
SITE DESIGN CONSTRUCTION MANAGEMENT
909 BASIN AVE P.O. BOX 1135
BISMARCK, N.D. 58504 FAX (701) 223-2606



DRAWN BY: JWS
CHECK BY: MSS
DATE: 8-2-01
FILE DESC:
COMPUTER FILE:
SURVEY FILE:

SHEET
1 OF 3