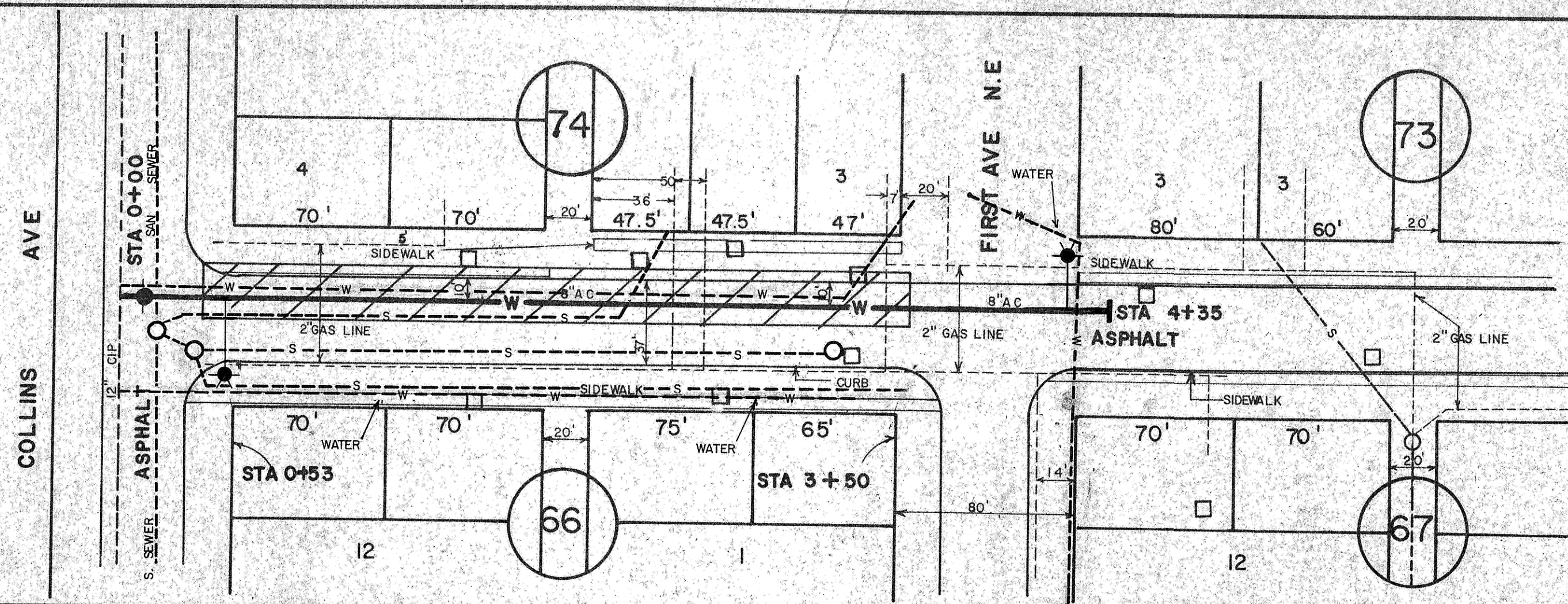


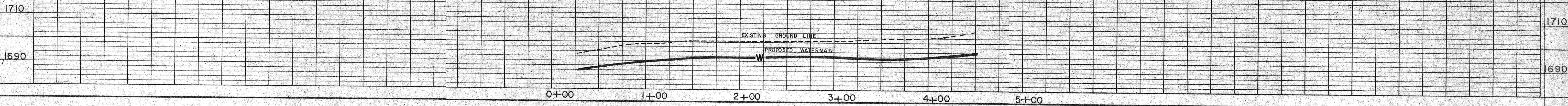
**PLAN**  
 SURVEYED BY: \_\_\_\_\_ DATE: \_\_\_\_\_  
 PLOTTED BY: \_\_\_\_\_  
 NOTE BOOK No. \_\_\_\_\_  
 ALIGNMENT CHECKED BY: \_\_\_\_\_  
 FIT OF WAY CHECKED BY: \_\_\_\_\_

HORIZONTAL SCALE 1" = 50'  
 VERTICAL SCALE 1" = 20'

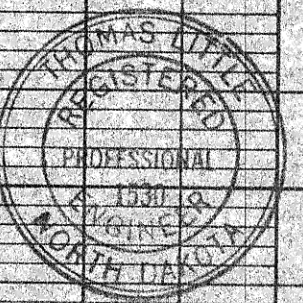


- STA 0+00 INSTALLED
- 8" x 12" TAPPING TEE & VALVE & BOX
- STA 0+47 INSTALLED
- 1" x 6" TEE
- 37' L.F. OF HYDRANT LEAD
- 1" x 6" GATE VALVE
- 1" FIRE HYDRANT
- 1" x 12" HYDRANT EXTENSION
- INSTALLED 443' L.F. 8" A.C. WATERMAIN
- 228' L.F. CURB & GUTTER
- 558' S.F. SIDEWALK
- 728' S.Y. ASPHALT
- 98' S.Y. SOG
- STA 4+26 INSTALLED
- 1" x 6" TEE
- 0' L.F. OF HYDRANT LEAD
- 1" x 6" GATE VALVE
- 1" FIRE HYDRANT
- 1" x 12" HYDRANT EXTENSION
- STA 4+43 INSTALLED
- 1" x 6" PLUG

ALL UTILITIES OTHER THAN WHAT WAS INSTALLED IN THIS PROJECT ARE AT APPROXIMATE LOCATION



**PROFILE**  
 SURVEYED BY: \_\_\_\_\_ DATE: \_\_\_\_\_  
 PLOTTED BY: \_\_\_\_\_  
 NOTE BOOK No. \_\_\_\_\_  
 GRADE CHECKED BY: \_\_\_\_\_  
 STRUCTURE NOTATIONS CHECKED BY: \_\_\_\_\_



DATE	REV. BY	APPR. BY	DESCRIPTION
CITY OF MANDAN, NORTH DAKOTA ENGINEERING DEPARTMENT			
WATERMAIN ON FIFTH STREET N.E. FROM COLLINS AVE TO FIRST AVE N.E.			
CITY ENGR. THOMAS LITTLE	DRAWN BY B.B.	CHECKED BY	SCALE: 1" = 20'
APPROVED BY	DATE: MARCH 1979	SHEET 2 OF 6	
PROJECT NO. 79-6	DISTRICT NO. 6		