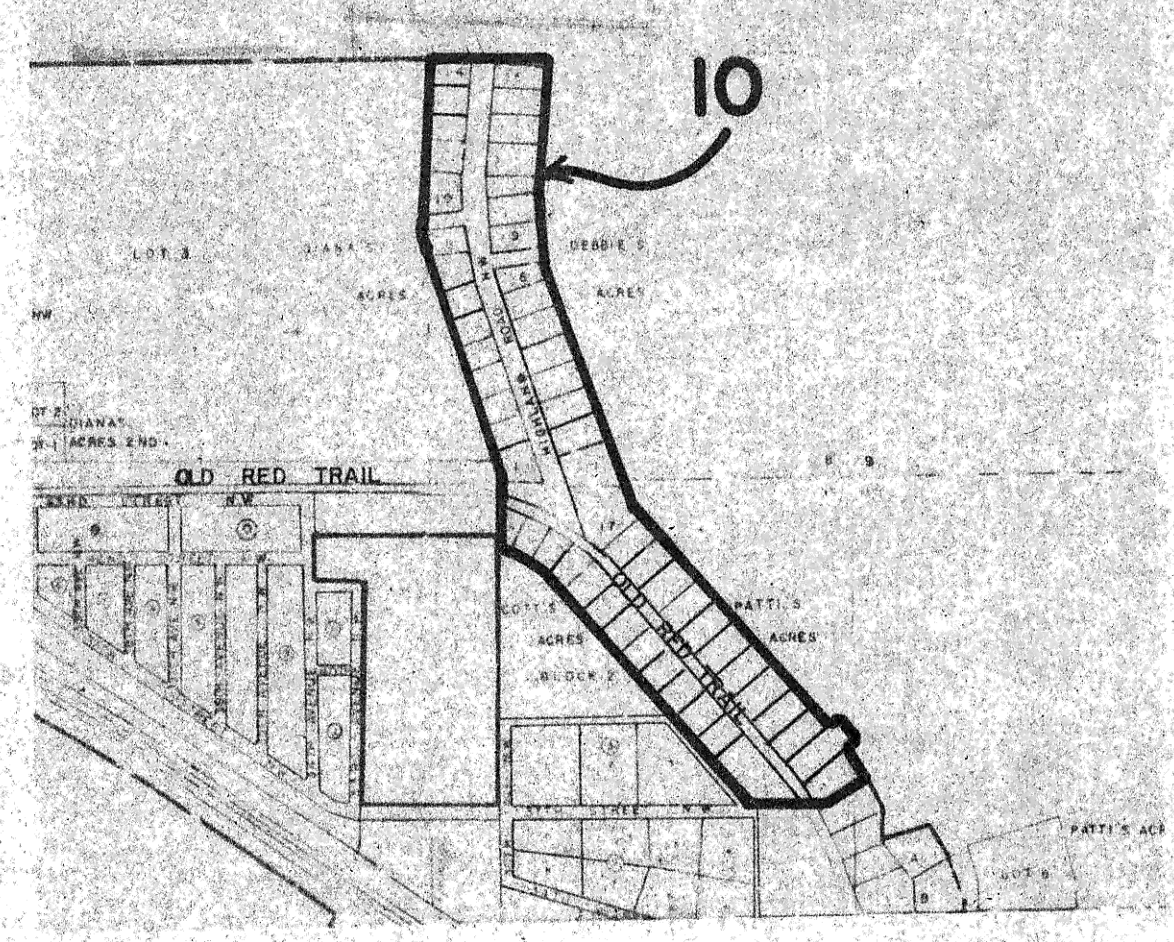
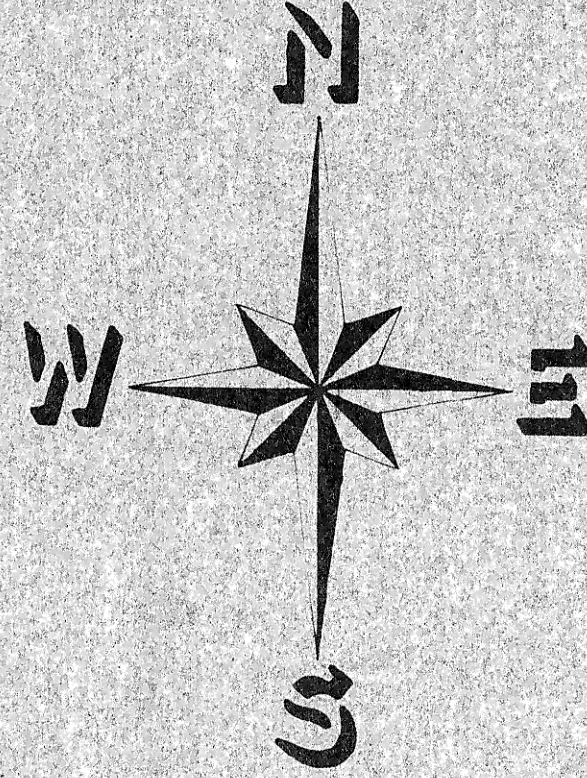
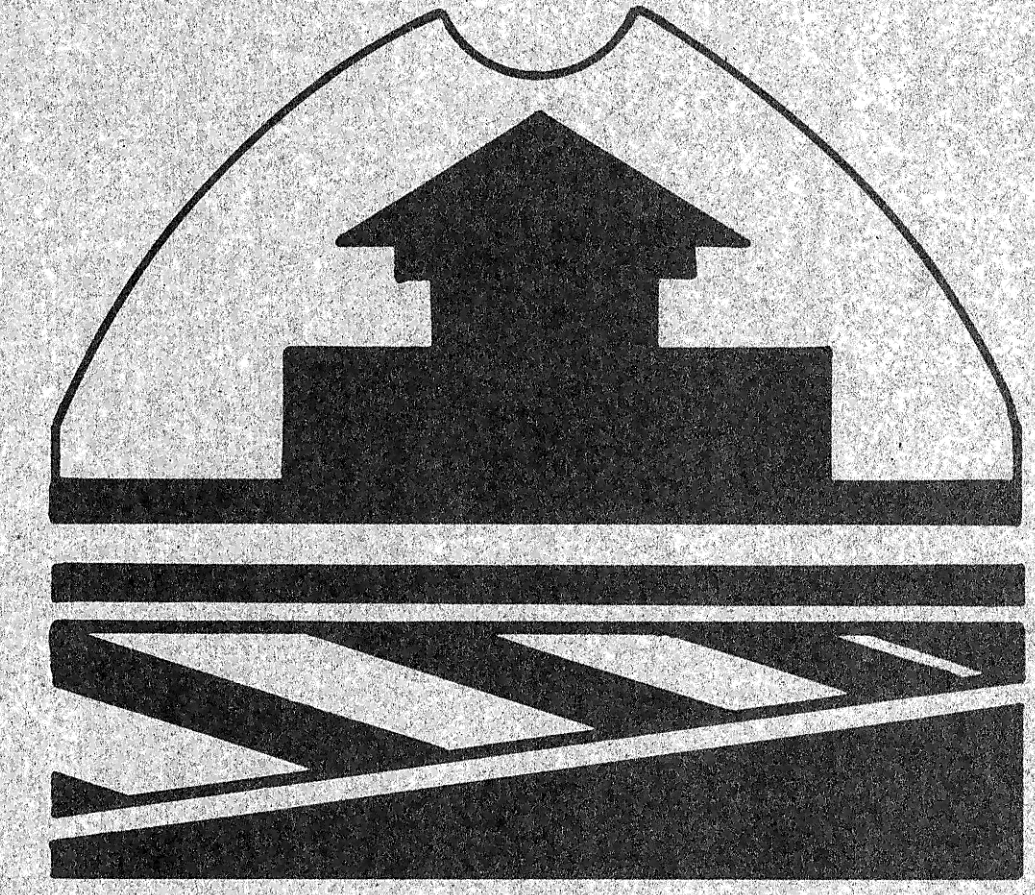
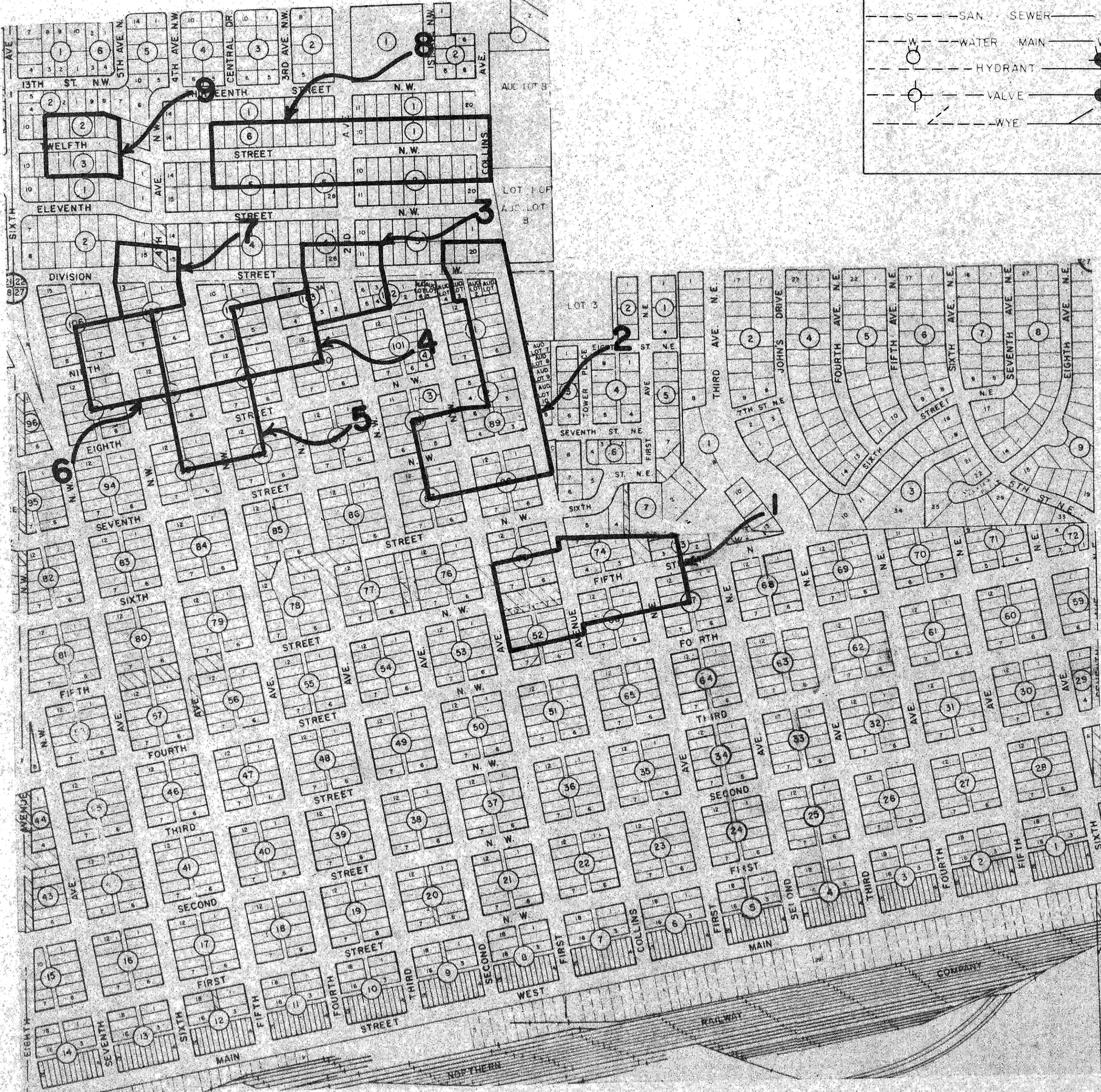


CITY OF MANDAN



AREA MAP

EXISTING	LEGEND	PROPOSED
---	STORM SEWER	SS
- - -	SAN. SEWER	ST
○	WATER MAIN	W
○	HYDRANT	W
○	VALVE	W
- - -	WYE	W



ENGINEER'S CERTIFICATE

I, THOMAS R. LITTLE, A REGISTERED PROFESSIONAL ENGINEER, HEREBY CERTIFY THAT THE ATTACHED PLANS WERE PREPARED UNDER MY SUPERVISION AND ARE COMPLETE AND CORRECT TO THE BEST OF MY KNOWLEDGE AND BELIEF.

Thomas R. Little
THOMAS R. LITTLE, P.E.
CITY ENGINEER - MANDAN, N.D.



INDEX	
1 OF 4	COVER SHEET
2 OF 4	FIFTH ST. NE. FROM COLLINS AVE TO FIRST AVE. N.E.
3 OF 4	HYDRANT LOCATION AREAS 2 THROUGH 9
4 OF 4	HYDRANT LOCATION AREA 10

AS BUILT

WATER IMPROVEMENT PROJECT NO 79-6

DISTRICT NO-6

P 79-6
D 6