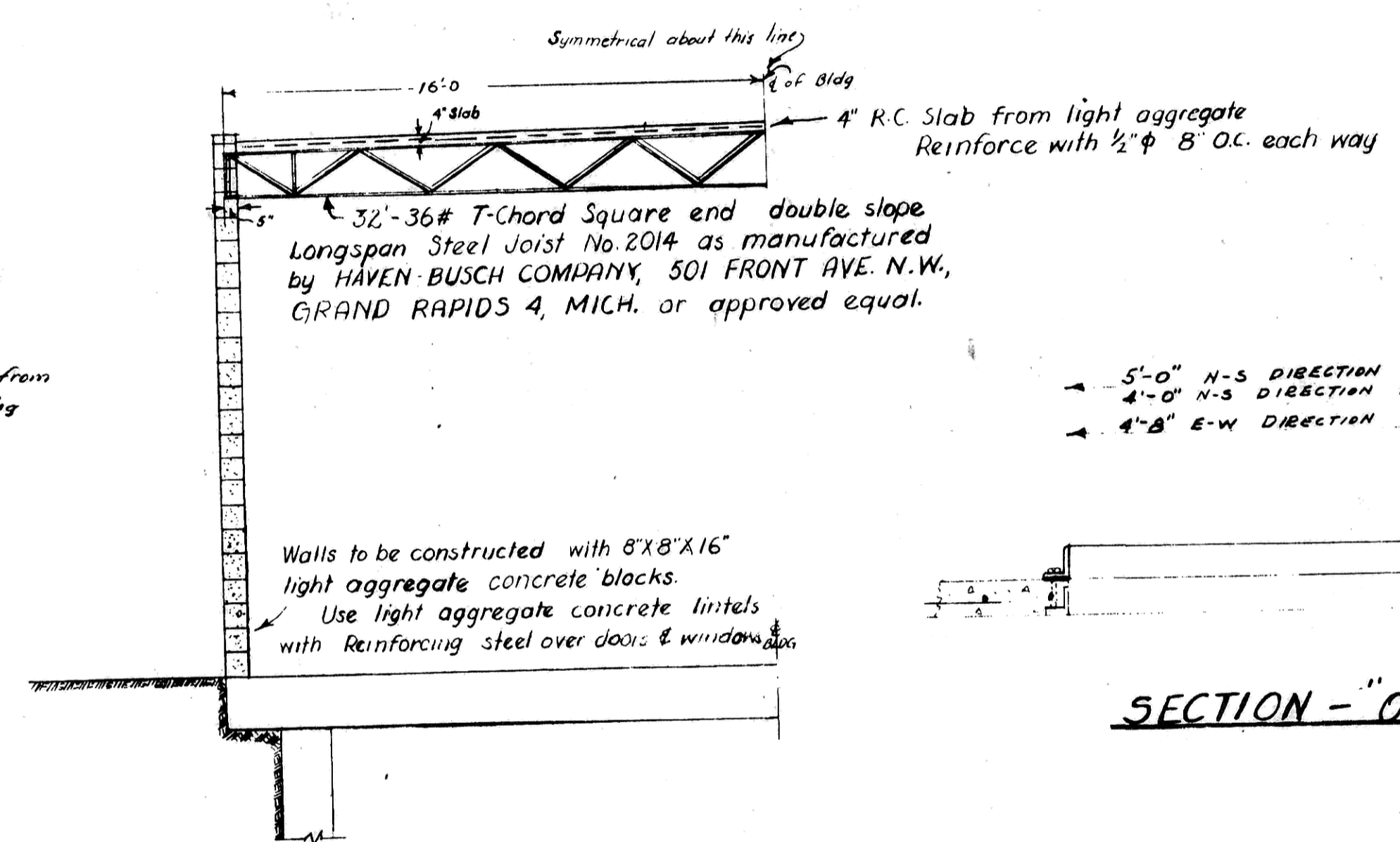
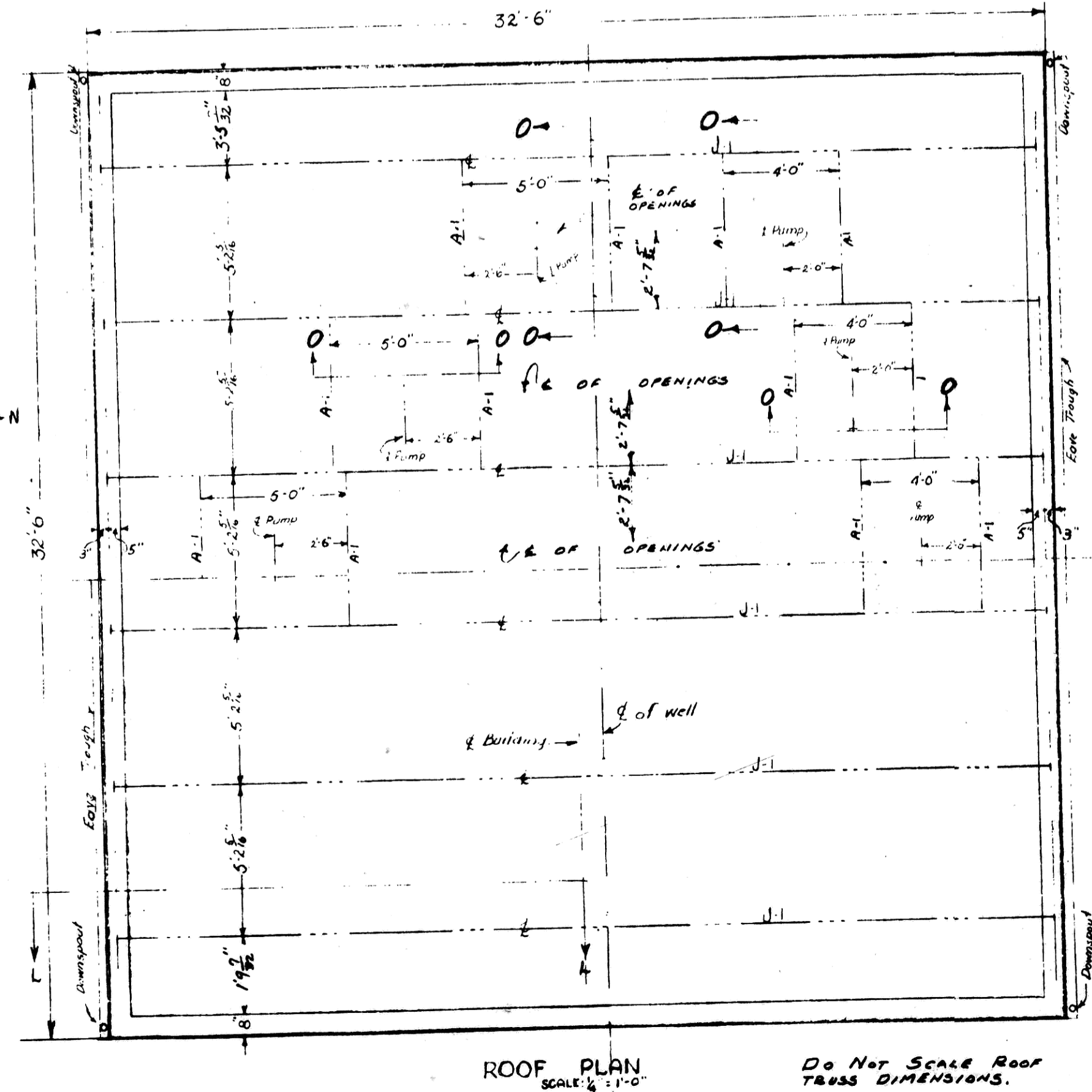
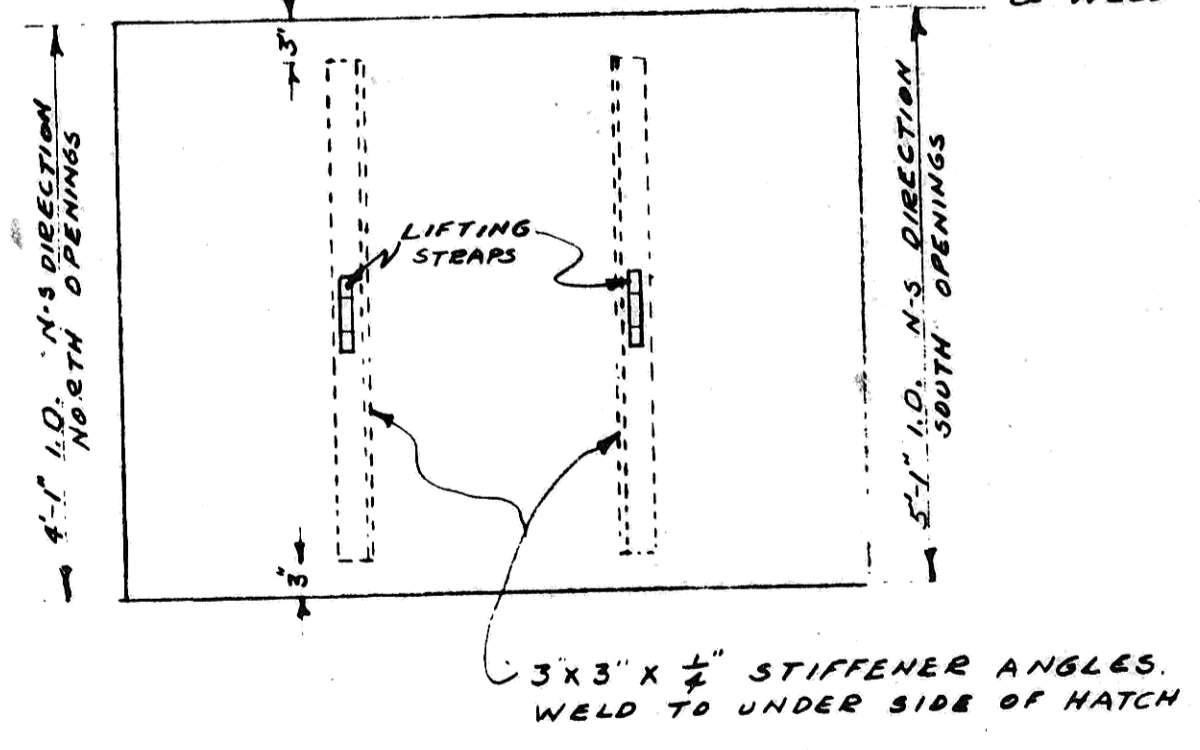
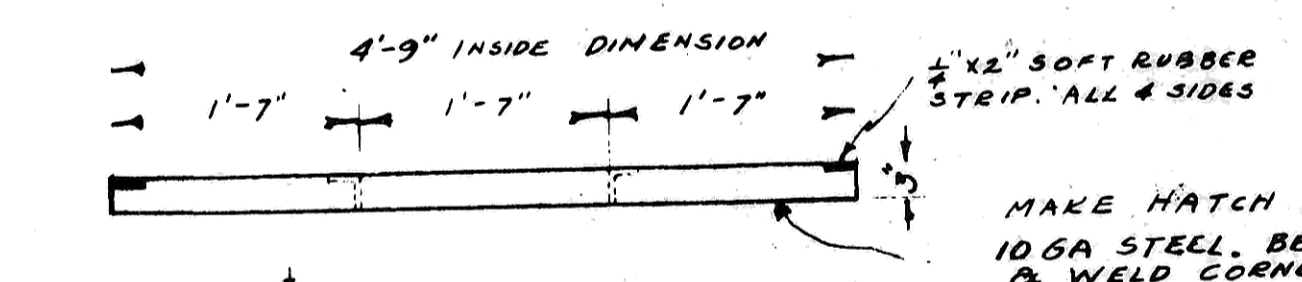
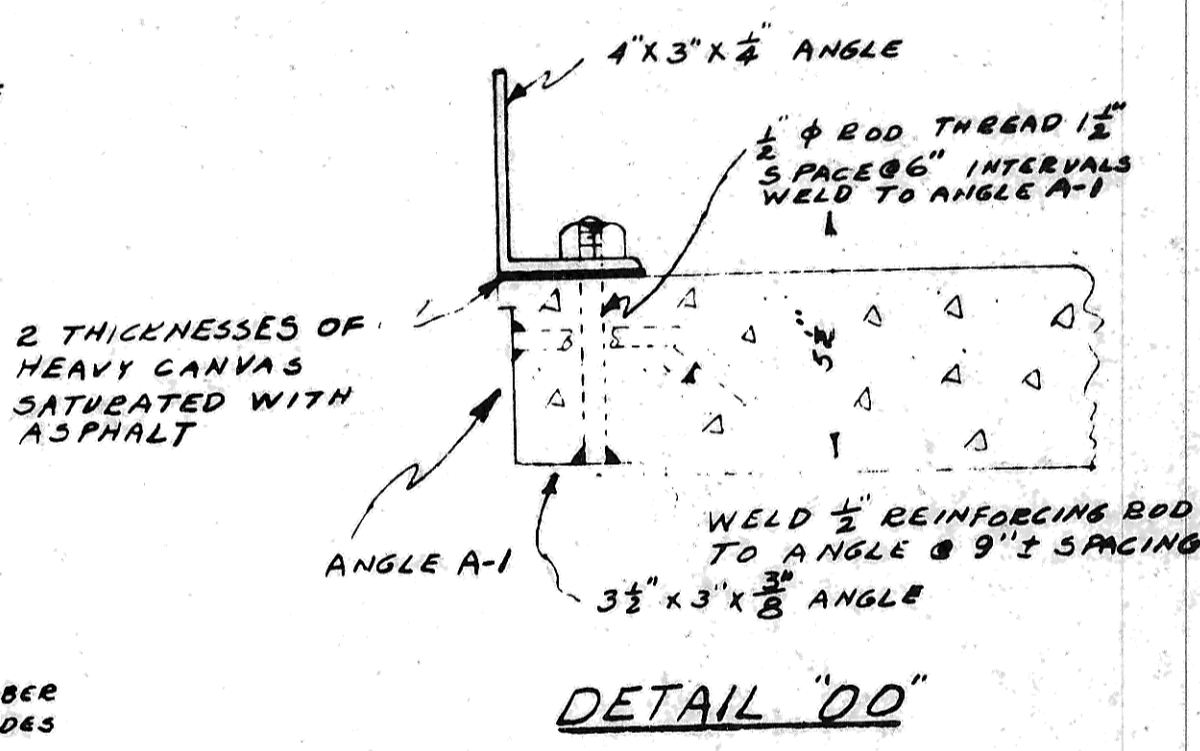
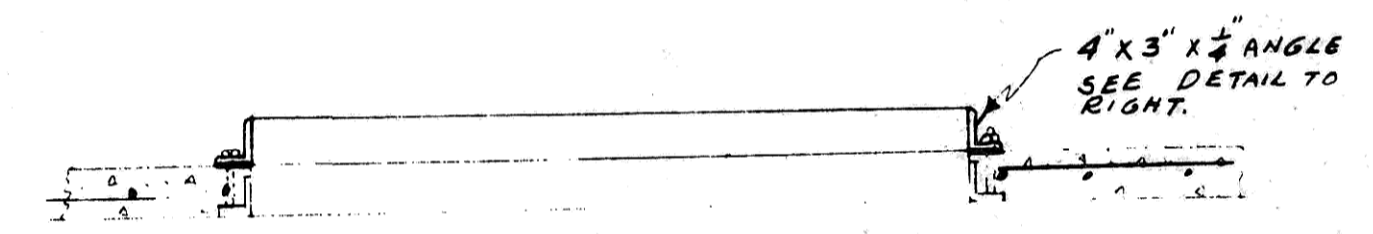


LINTELS OVER ALL DOORS & WINDOWS TO CONSIST OF 2 ANGLES 3 1/2" x 1" x 3/8", 4" LEGS VERTICAL.



5'-0" N-S DIRECTION SOUTH OPENINGS
4'-0" N-S DIRECTION NORTH OPENINGS
4'-8" E-W DIRECTION ALL OPENINGS



Job: WATER WORKS IMPROVEMENTS, 1953
PHASE II

File No. _____ Date: _____
Revised: _____

SHEET NO. 5 OF 9 SHEETS
Scale AS SHOWN

DRAWN BY: **GEORGE J. TOMAN** REGISTERED PROFESSIONAL ENGINEER NORTH DAKOTA 1953
CHECKED BY: _____

SUPERSTRUCTURE DETAILS

George J. Toman
h. F. E. No. 185

Consulting Engineer
Mandan, North Dakota