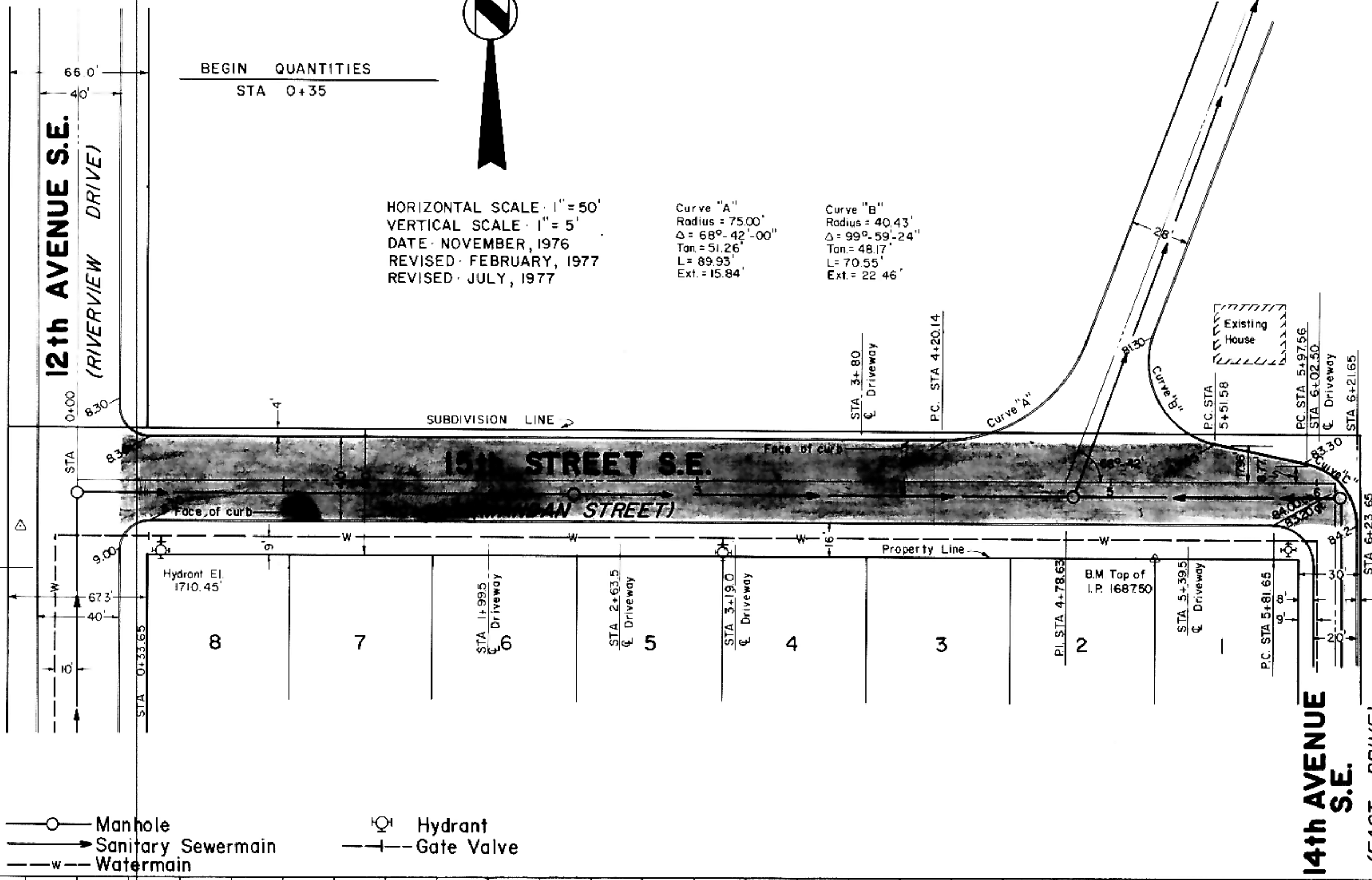
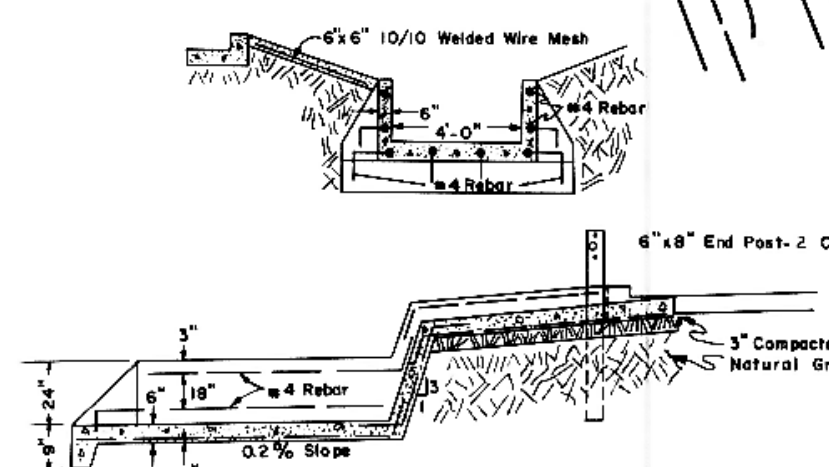


DATE
BY
SUPERVISOR
PHOTO
NOTE BOOK
ALIGNMENT CHECKED
OF WAY CHECKED
No.

DATE
BY
SUPERVISOR
PHOTO
NOTE BOOK
GRADES CHECKED
PERICULAR NOTATIONAL CHECKED
No.



END QUANTITIES
STA 6+21.65



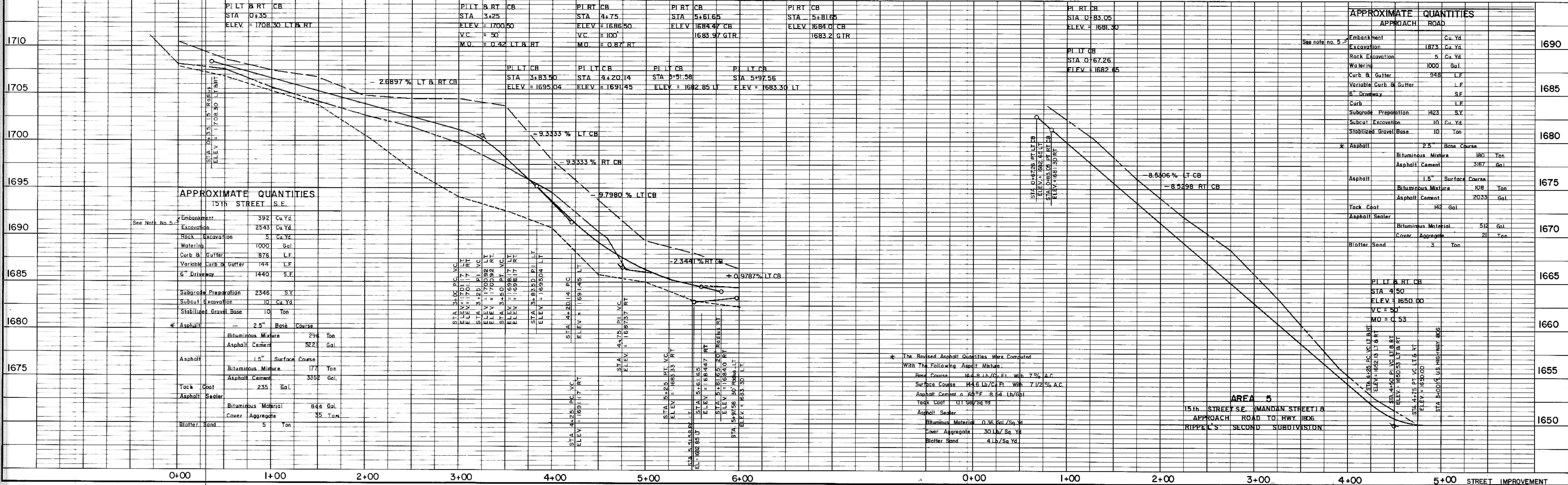
BEGIN QUANTITIES
NORTH CURB FACE MANDAN STREET

END QUANTITIES
WEST SHOULDER STATE HWY 1806

HORIZONTAL SCALE: 1" = 50'
VERTICAL SCALE: 1" = 5'
DATE: NOVEMBER, 1976
REVISED: FEBRUARY, 1977
REVISED: JULY, 1977

- NOTES**
- Sewer and Water Improvements as shown on plans are existing as per date of street improvement plans. Existing Sewer and Water as per Consolidated Water and Sewer Improvement District No. 23.
 - All curb and gutter radii are 15 feet at face of curb unless otherwise stated.
 - Proposed grades are to top of curb.
 - City Engineer shall confirm location of variable curb and gutter for driveways prior to construction of said curb.
 - Embankment quantities include an assumed 25% shrinkage factor.
 - Outfall detail shown is for the structure to be constructed on the south side of the approach. The structure to be constructed on the north side will have a channel width and depth of half that shown. Rebar in the channel bed shall be spaced at 18" intervals and shall be placed 3" above channel bed in side walls.
 - Standard two cable guard rail shall be installed where shown and shall conform to North Dakota State Highway Department Specifications, Standard Detail No. D-722-10

Existing 50' Left
Existing 50' Right
Manhole
Sanitary Sewermain
Watermain
Hydrant
Gate Valve



* The Required Asphalt Quantities Were Computed With The Following Asphalt Mixture:
Base Course: 164.8 Lb/Cu Ft. With 7% A.C.
Surface Course: 144.6 Lb/Cu Ft. With 7 1/2% A.C.
Asphalt Cement: 64.5% R 54 Lb/Gal
Tack Coat: 0.150 Lb/Sq Yd
Asphalt Sealer: 0.36 Gal/Sq Yd
Cover Aggregate: 30 Lb/Sq Yd
Blotter Sand: 4 Lb/Sq Yd

AREA 5
15th STREET S.E. (MANDAN STREET) B
APPROACH ROAD TO HWY 1806
RIPPEL'S SECOND SUBDIVISION