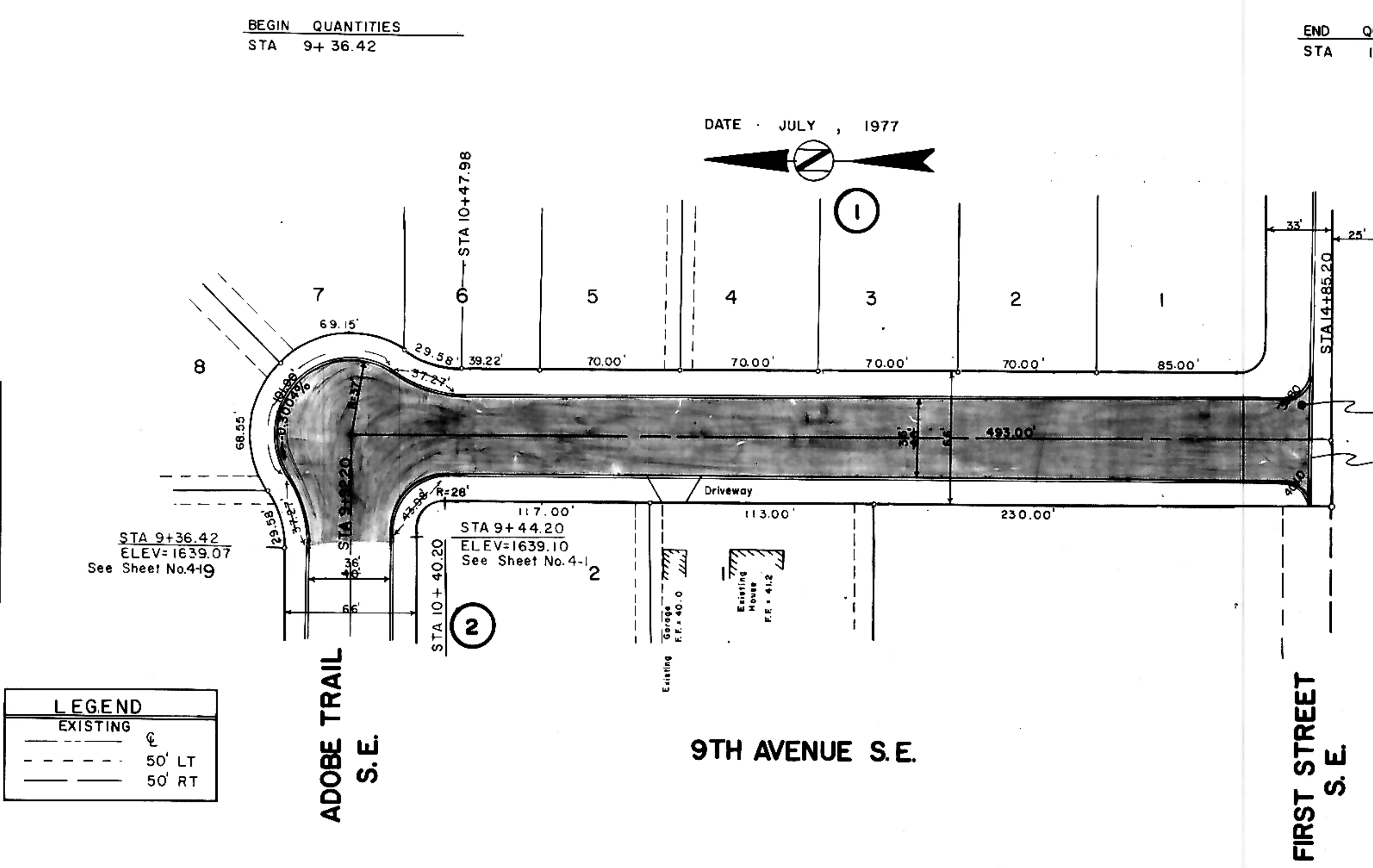
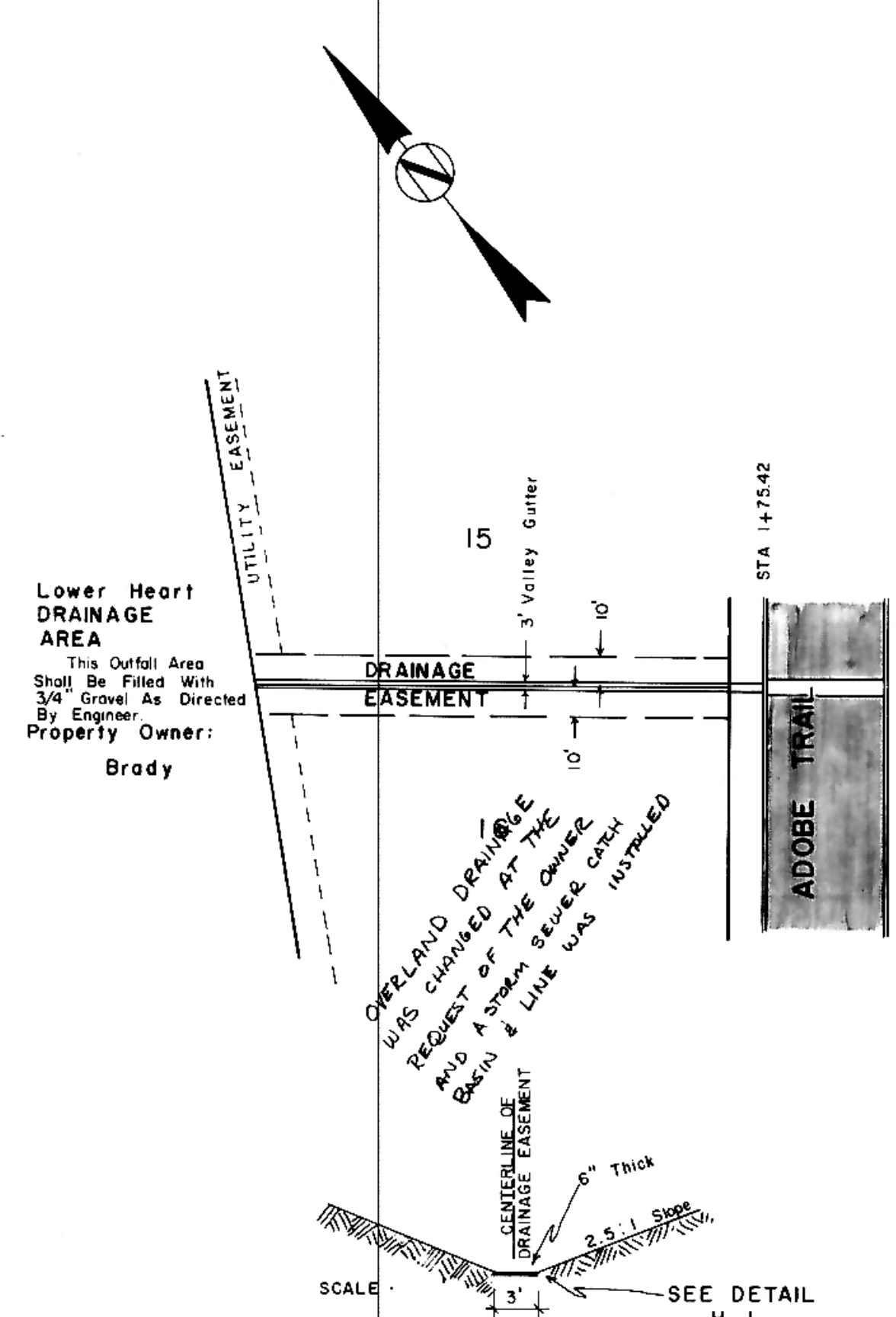


DATE	
BY	
REVISION	
NO.	
PLAN	
NOTE BOOK	
NO.	

DATE	
BY	
REVISION	
NO.	
PROFILE	
NOTE BOOK	
NO.	

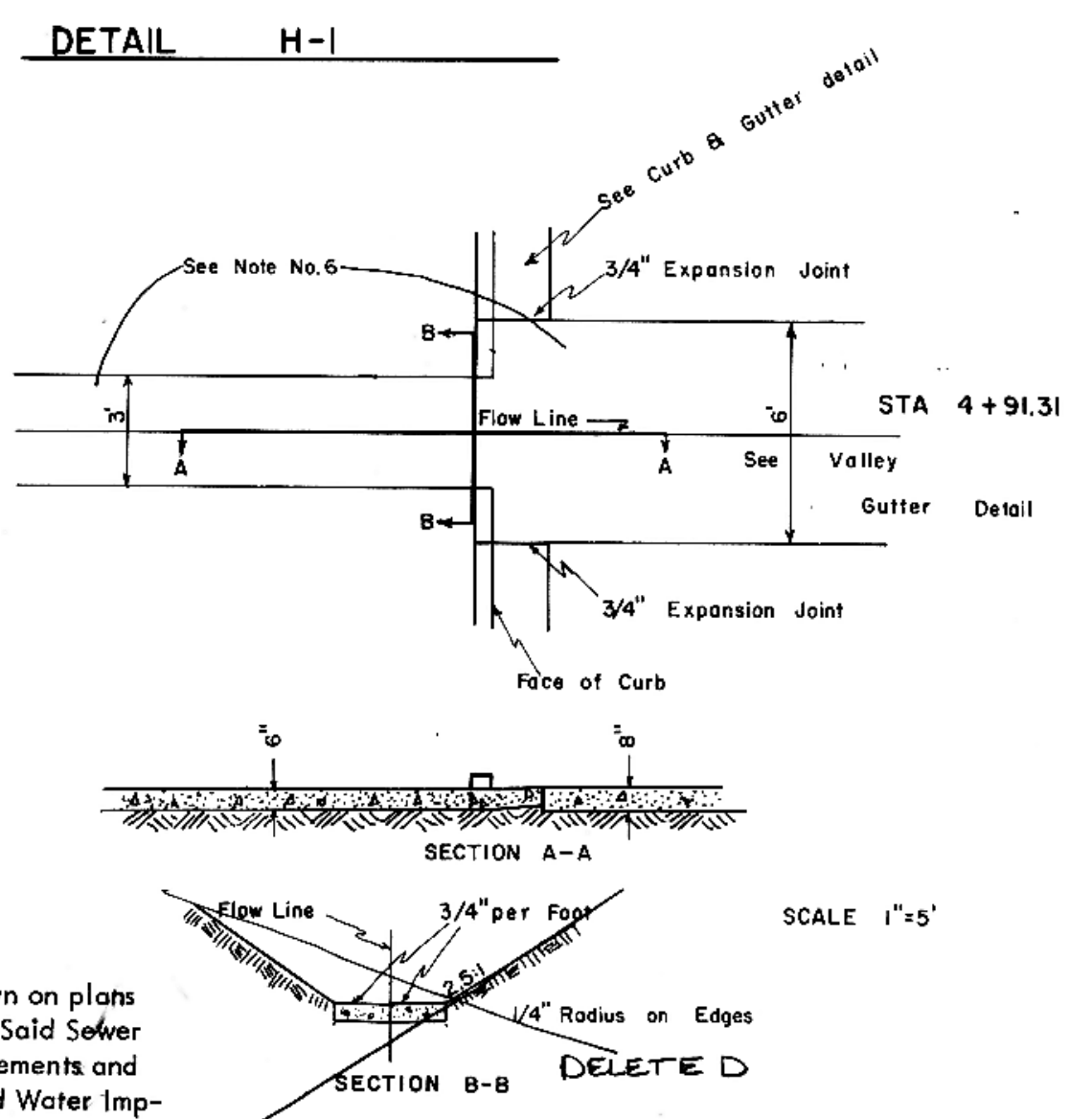


LEGEND	
---	EXISTING
- - -	50' LT
- - -	50' RT

BEGIN QUANTITIES
STA 9+36.42

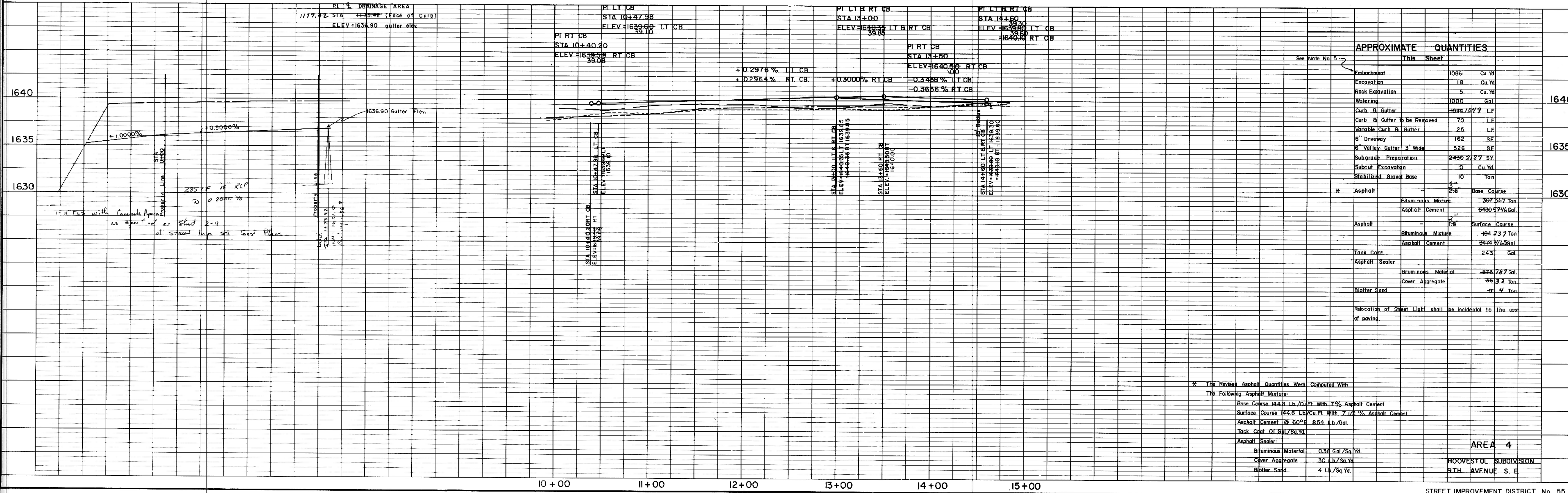
END QUANTITIES
STA 14+75

DATE JULY, 1977



- NOTES:
- Proposed Sewer and Water Improvements on Ninth Ave. SE are shown on plans for "Consolidated Sewer and Water Improvement District No. 25." Said Sewer and Water Improvements shall be installed prior to any street improvements and Contractor shall be responsible for the preservation of said Sewer and Water Improvements during construction.
 - City Engineer shall confirm location of variable curb and gutter for driveways prior to construction of said curb.
 - Proposed grades are to top of curb unless otherwise stated.
 - All curb and gutter radii are 15 feet to face of curb unless otherwise stated.
 - Embankment quantities shown include an assumed 25% shrinkage factor.
 - The standard 6' and 3' valley gutter sections shall be poured as one continuous section as shown. Joints shall be located and constructed as directed in the standard typical details for the 6' section. Contraction joints shall be placed at equal intervals, 7' maximum, and shall be scored to 1/3 the depth of the concrete.

HORIZONTAL SCALE: 1"=50'
VERTICAL SCALE: 1"=5'



APPROXIMATE QUANTITIES		
	This Sheet	
Embankment	1086	Cu Yd
Excavation	18	Cu Yd
Rock Excavation	5	Cu Yd
Watering	1000	Gal
Curb & Gutter	1086	L.F.
Curb & Gutter to be Removed	70	L.F.
Variable Curb & Gutter	25	L.F.
6" Driveway	162	S.F.
6" Valley Gutter 3' Wide	526	S.F.
Subgrade Preparation	2436	Sq. Yd.
Subcut Excavation	10	Cu Yd
Stabilized Gravel Base	10	Ton
Asphalt	243	Base Course
Asphalt	307	2 1/2" Ton
Asphalt Cement	5430	2 1/4" Gal.
Asphalt	184	Surface Course
Asphalt	184	2 1/2" Ton
Asphalt Cement	3474	1 1/4" Gal.
Track Coat	243	Gal.
Asphalt Sealer	243	Gal.
Asphalt Sealer	243	Gal.
Bituminous Material	0.36	Gal./Sq. Yd.
Cover Aggregate	30	Lb./Sq. Yd.
Blotter Sand	4	Lb./Sq. Yd.

* The Revised Asphalt Quantities Were Computed With The Following Asphalt Mixture:
Base Course 14.6 Lb./Cu Ft. With 7% Asphalt Cement
Surface Course 14.6 Lb./Cu Ft. With 7 1/2% Asphalt Cement
Asphalt Cement @ 60°F 8.54 Lb./Gal.
Track Coat 0.1 Gal./Sq. Yd.
Asphalt Sealer:
Bituminous Material 0.36 Gal./Sq. Yd.
Cover Aggregate 30 Lb./Sq. Yd.
Blotter Sand 4 Lb./Sq. Yd.

AREA 4
HOVESTOL SUBDIVISION
9TH AVENUE S.E.