

PLAN	DATE
NO.	
BY	
CHECKED	
APPROVED	

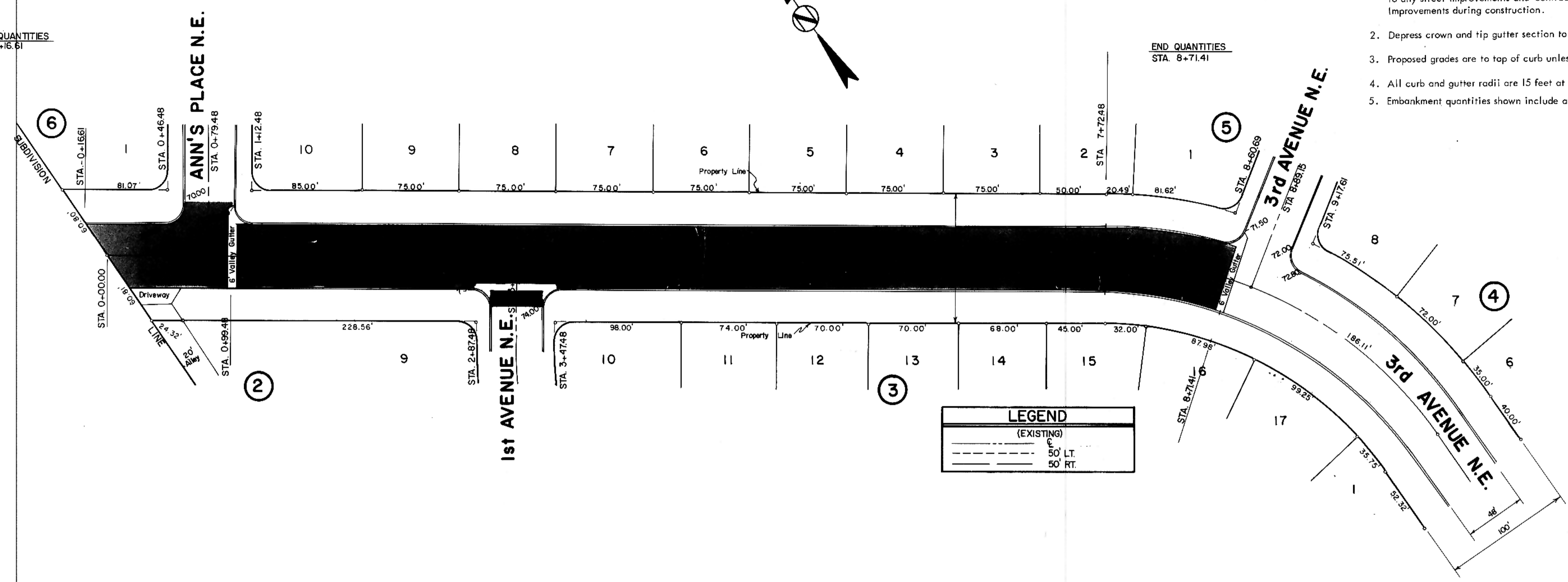
PROFILE	DATE
NO.	
BY	
CHECKED	
APPROVED	

HORIZONTAL SCALE: 1" = 50'  
VERTICAL SCALE: 1" = 5'  
DATE: JULY, 1977

- NOTES:
- Proposed Sewer and Water Improvements on 14th Street NE are shown on plans for "Consolidated Sewer and Water Improvement District No. 25." Said Sewer and Water Improvements shall be installed prior to any street improvements and contractor shall be responsible for the preservation of said Sewer and Water Improvements during construction.
  - Depress crown and rip gutter section to allow drainage to flow across intersection as indicated.
  - Proposed grades are to top of curb unless otherwise stated.
  - All curb and gutter radii are 15 feet at face of curb unless otherwise stated.
  - Embankment quantities shown include an assumed 30% shrinkage factor.

BEGIN QUANTITIES  
STA. -0+16.61

END QUANTITIES  
STA. 8+71.41



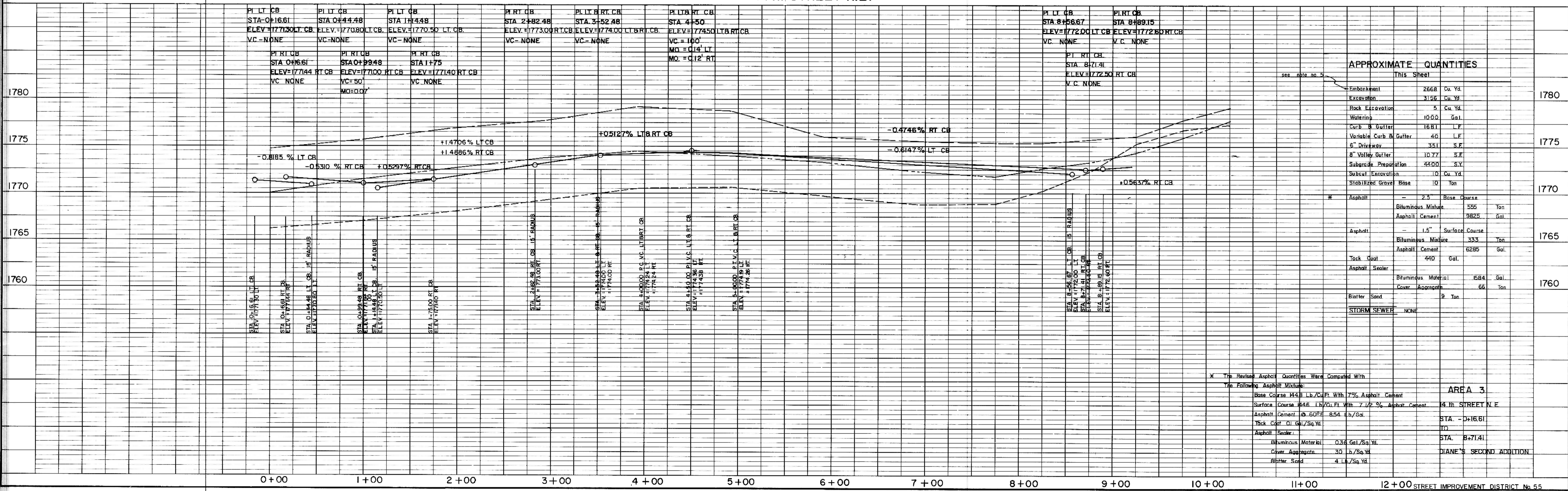
LEGEND

(EXISTING)

--- 5' LT.

--- 5' RT.

14th STREET N.E.



APPROXIMATE QUANTITIES

Item	Quantity	Unit
Embankment	2668	Cu. Yd.
Excavation	3156	Cu. Yd.
Rock Excavation	5	Cu. Yd.
Watering	1000	Gal.
Curb & Gutter	1681	L.F.
Variable Curb & Gutter	40	L.F.
6" Driveway	351	S.F.
8" Valley Gutter	1077	S.F.
Subgrade Preparation	4400	S.Y.
Subcut Excavation	10	Cu. Yd.
Stabilized Gravel Base	10	Ton
Asphalt	2.5	Base Course
Bituminous Mixture	555	Ton
Asphalt Cement	3825	Gal.
Asphalt	1.5	Surface Course
Bituminous Mixture	333	Ton
Asphalt Cement	6285	Gal.
Tack Coat	440	Gal.
Asphalt Sealer		
Bituminous Material	1584	Gal.
Cover Aggregate	66	Ton
Blotter Sand	9	Ton
STORM SEWER	NONE	

\* The Revised Asphalt Quantities Were Computed With The Following Asphalt Mixture:

Base Course H48 Lb./Cu. Ft. With 7% Asphalt Cement

Surface Course H46 Lb./Cu. Ft. With 7 1/2% Asphalt Cement

Asphalt Cement @ 60° 8.54 Lb./Gal.

Thick Coat @ 60° 1.61/Sq. Yd.

Asphalt Sealer:

Bituminous Material 0.36 Gal./Sq. Yd.

Cover Aggregate 30 Lb./Sq. Yd.

Blotter Sand 4 Lb./Sq. Yd.

AREA 3  
14th STREET N.E.  
STA. -0+16.61  
TO  
STA. 8+71.41  
DIANE'S SECOND ADDITION