

PLAN
 SURVEYED BY: _____
 NOTED BY: _____
 NOTE BOOK: _____
 No. _____

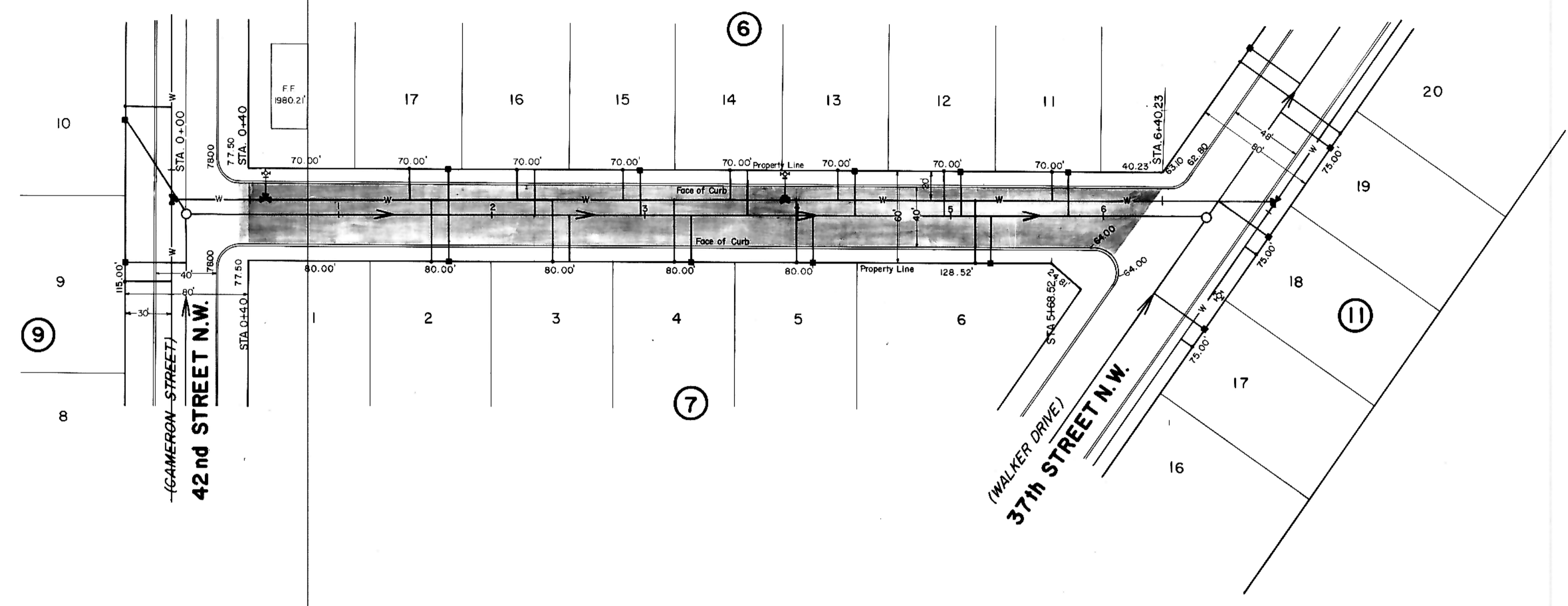
PROFILE
 SURVEYED BY: _____
 NOTED BY: _____
 NOTE BOOK: _____
 No. _____



HORIZONTAL SCALE: 1" = 50'
 VERTICAL SCALE: 1" = 5'
 DATE: JULY, 1977

BEGIN QUANTITIES
 STA 0+35

END QUANTITIES
 STA 6+44.93

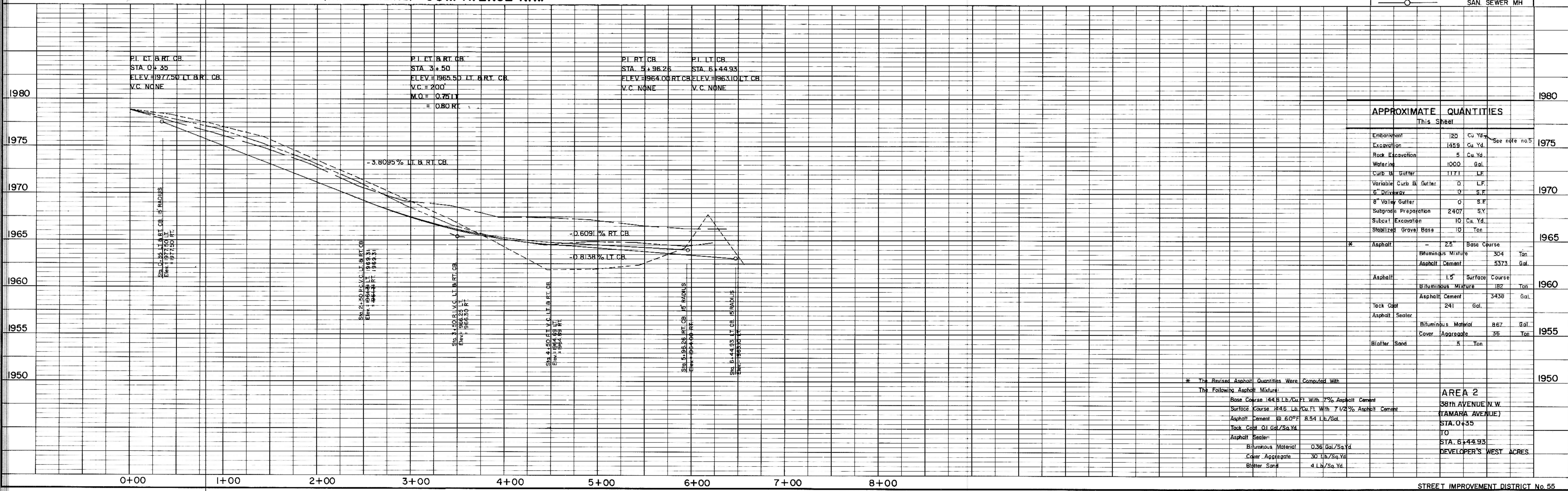


(TAMARA AVENUE) 38th AVENUE N.W.

- NOTES:
1. Sewer and Water Improvements as shown on plans are existing as per date of street improvement plans. Existing Sewer and Water as per "Consolidated Water and Sewer Improvement District No. 24".
 2. All curb and gutter radii are 15 feet at face of curb unless otherwise stated.
 3. Proposed grades are to top of curb unless otherwise stated.
 4. City Engineer shall confirm location of variable curb and gutter for driveways prior to construction of said curb.
 5. Embankment quantities shown include an assumed 25% shrinkage factor.

LEGEND

(EXISTING)	---	CENTERLINE
(EXISTING)	---	50' L.T.
(EXISTING)	---	50' RT.
(EXISTING)	W	WATERMAINS
(EXISTING)	H	HYDRANTS
(EXISTING)	G	GATE VALVES
(EXISTING)	T	TEES
(EXISTING)	P	PLUGS
(EXISTING)	S	SANITARY SEWER
(EXISTING)	M	SAN. SEWER MH



APPROXIMATE QUANTITIES
 This Sheet

Embankment	120	Cu Yd	See note no. 5
Excavation	1359	Cu Yd	
Rock Excavation	5	Cu Yd	
Waterline	1000	Gal	
Curb & Gutter	1171	LF	
Variable Curb & Gutter	0	LF	1970
8" Driveway	0	S.F.	
8" Valley Gutter	0	S.F.	1965
Subgrade Preparation	2407	S.Y.	
Subcut Excavation	10	Cu Yd	
Stabilized Gravel Base	10	Ton	
Asphalt	2.5"	Base Course	1960
Bituminous Mixture	304	Ton	
Asphalt Cement	5373	Gal	1960
Asphalt	1.5"	Surface Course	
Bituminous Mixture	182	Ton	
Asphalt Cement	3438	Gal	1955
Tack Coat	241	Gal	
Asphalt Sealer			1955
Bituminous Material	867	Gal	
Cover Aggregate	35	Ton	
Blotter Sand	5	Ton	1950

* The Revised Asphalt Quantities Were Computed With The Following Asphalt Mixtures:
 Base Course 144 Lb./Cu. Ft. With 7% Asphalt Cement
 Surface Course 246 Lb./Cu. Ft. With 7 1/2% Asphalt Cement
 Asphalt Cement @ 60°F 8.54 Lb./Gal.
 Tack Coat 0.1 Gal./Sq. Yd.
 Asphalt Sealer:
 Bituminous Material 0.36 Gal./Sq. Yd.
 Cover Aggregate 30 Lb./Sq. Yd.
 Blotter Sand 4 Lb./Sq. Yd.

AREA 2
 38th AVENUE N.W.
 (TAMARA AVENUE)
 STA. 0+35
 STA. 6+44.93
 DEVELOPER'S WEST ACRES