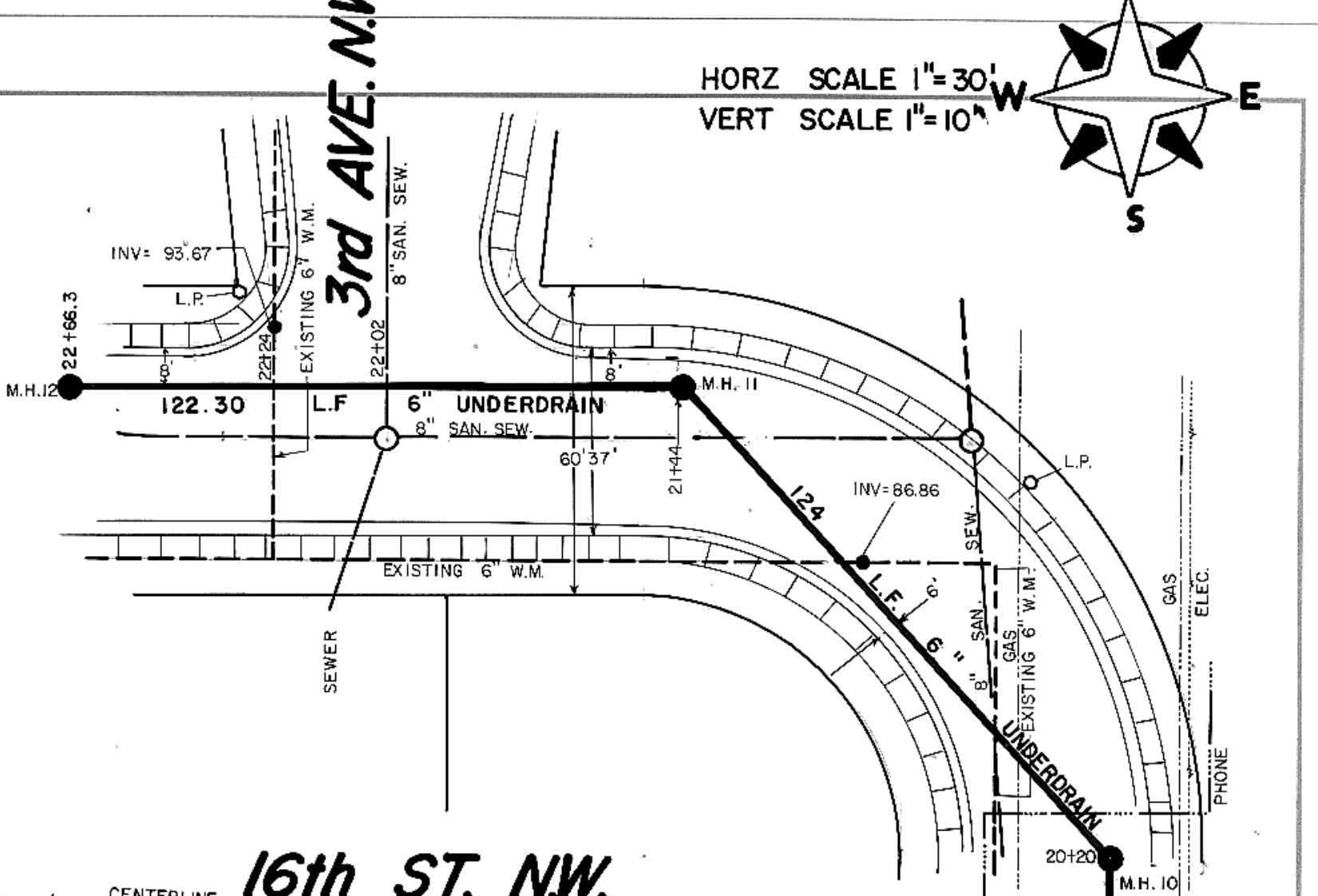
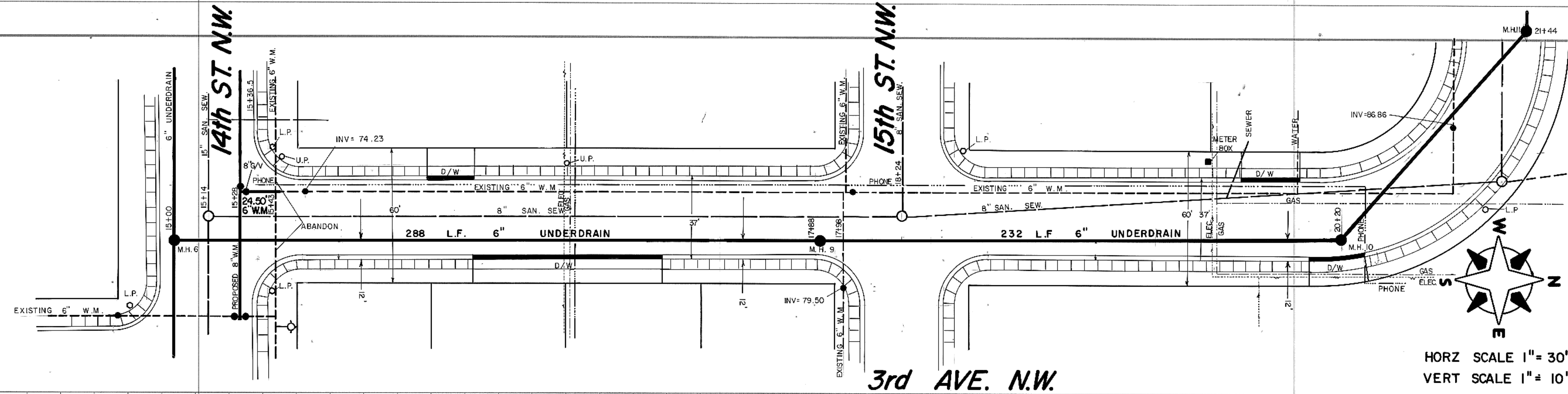
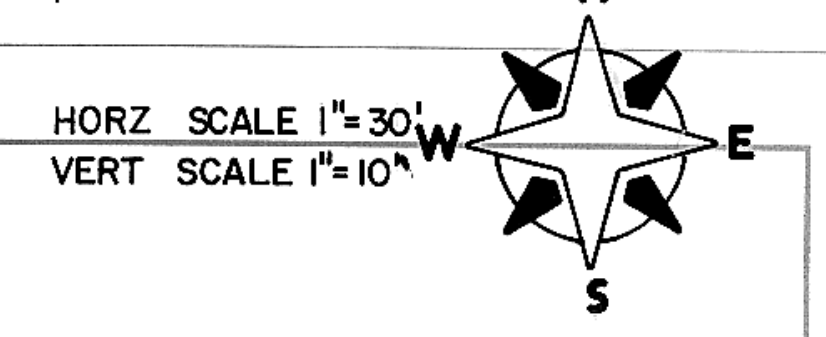
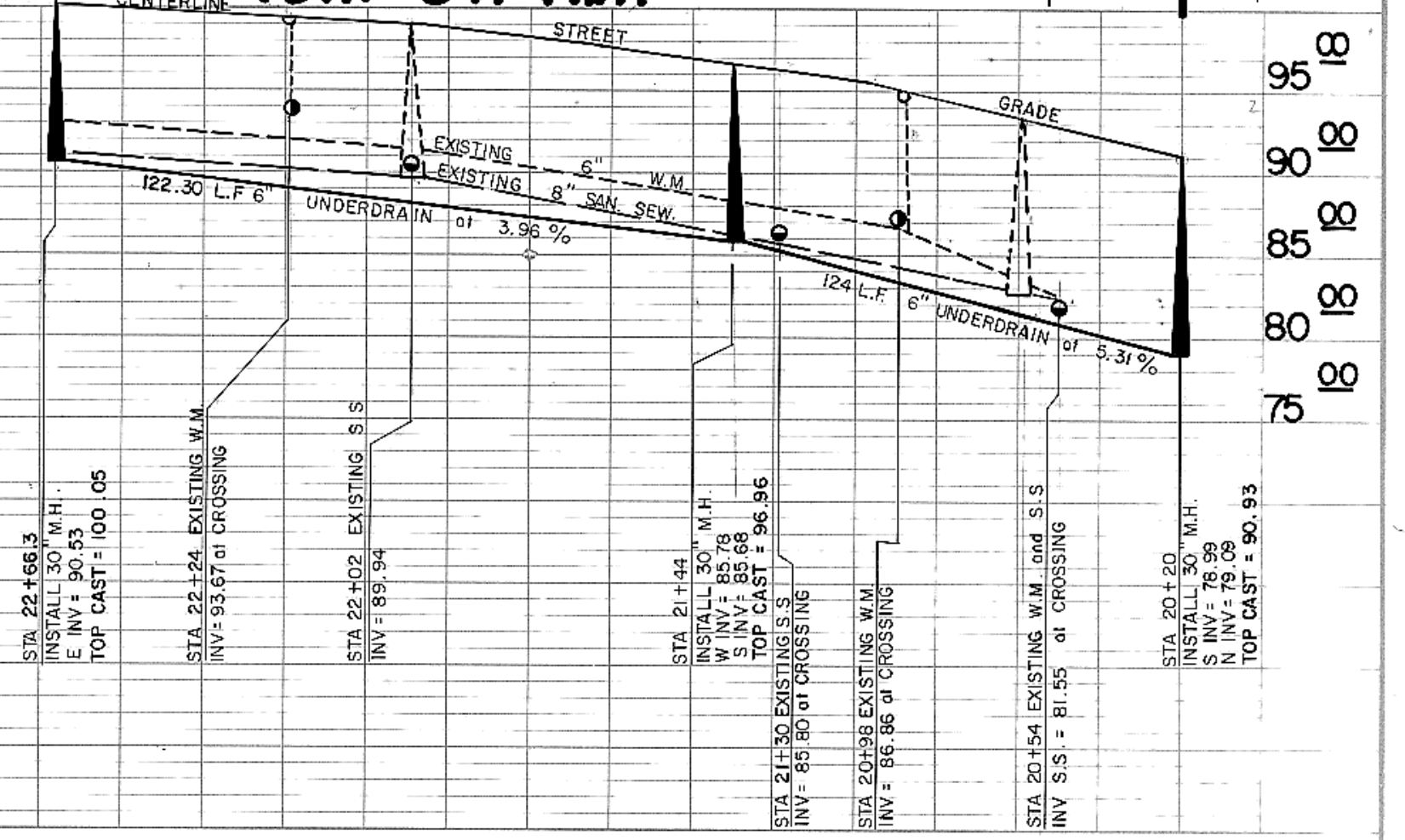
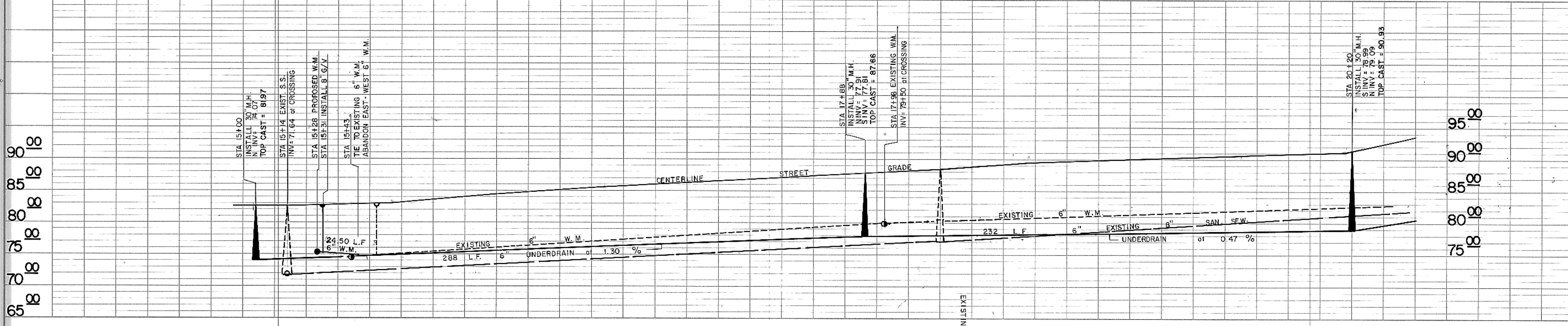


PLAN  
 SURVEYED  
 PLOTTED  
 NOTE BOOK  
 ALIGNMENT CHECKED  
 BY: [ ]  
 DATE: [ ]  
 NO. [ ]

PROFILE  
 SURVEYED  
 PLOTTED  
 NOTE BOOK  
 GAUGES CHECKED  
 STRONG FOUNDATIONS CHECKED  
 BY: [ ]  
 DATE: [ ]  
 NO. [ ]

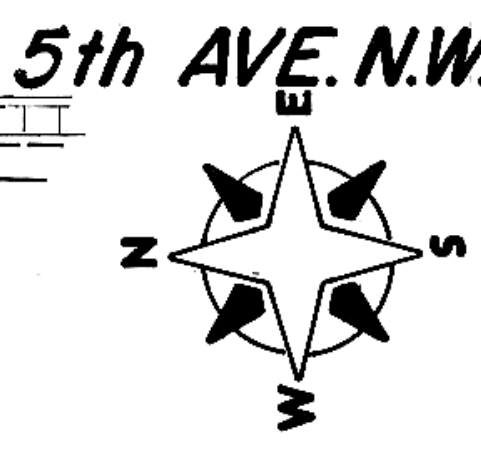
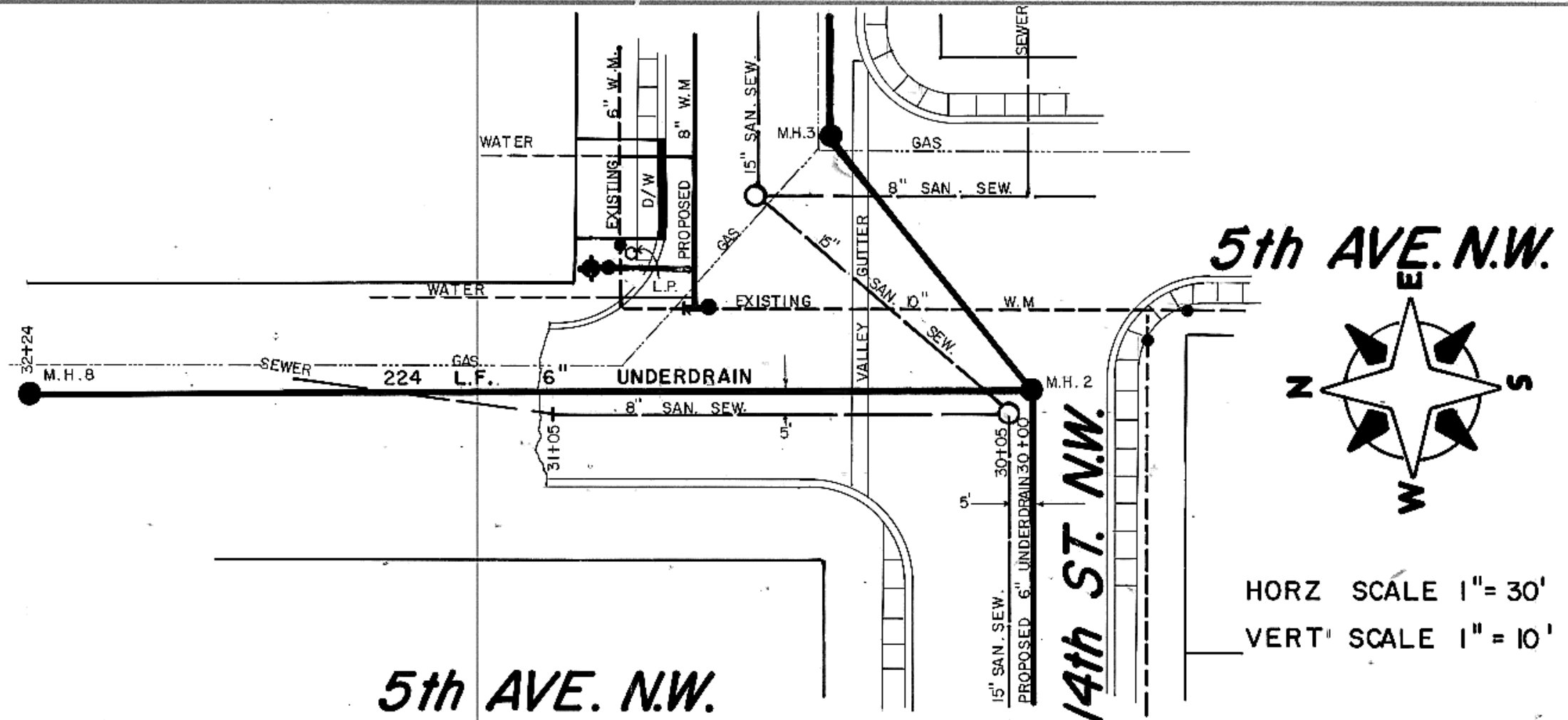


HORZ SCALE 1" = 30'  
 VERT SCALE 1" = 10'

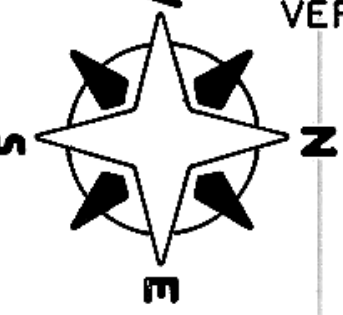
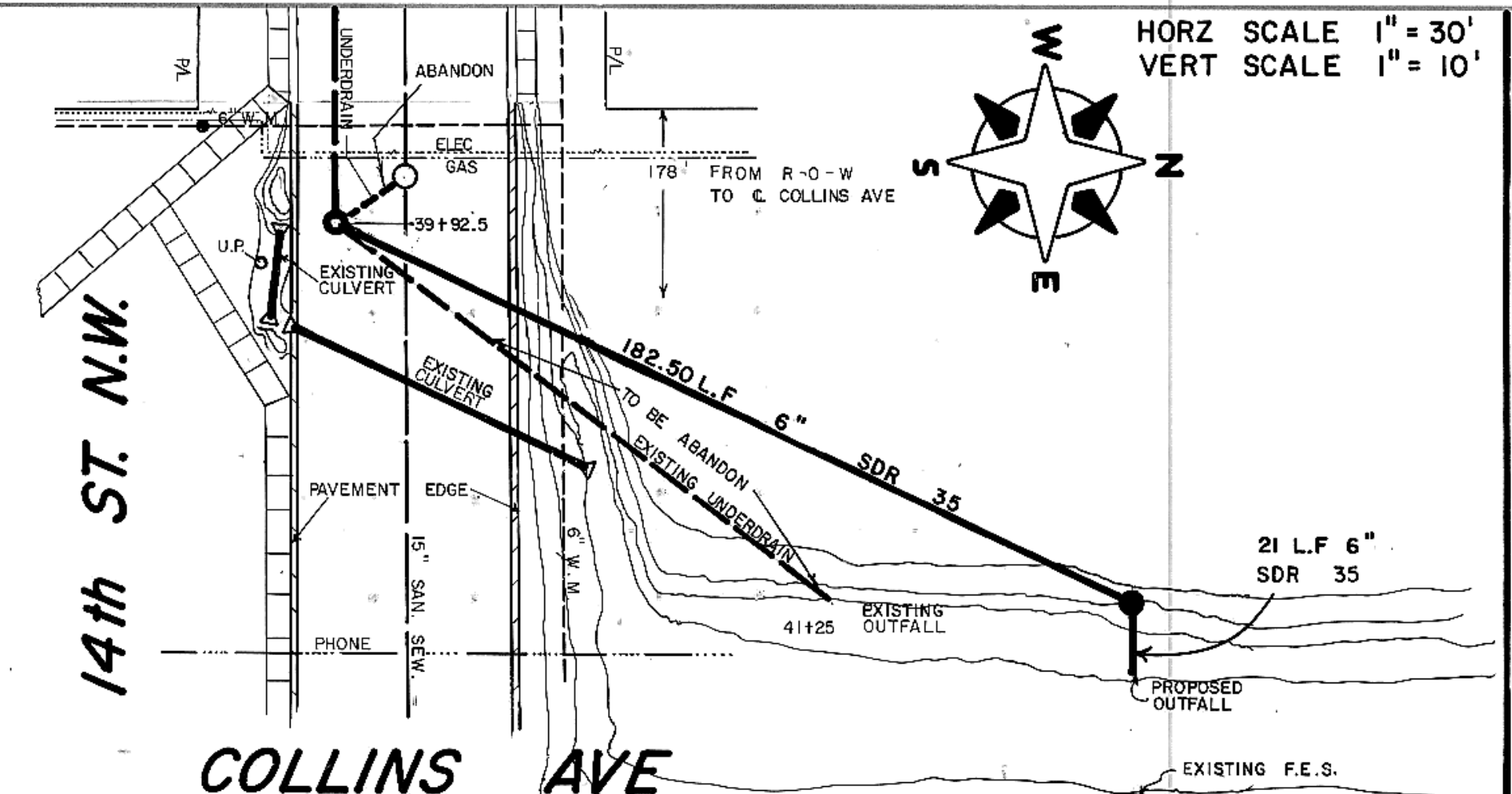


95.00  
90.00  
85.00  
80.00  
75.00

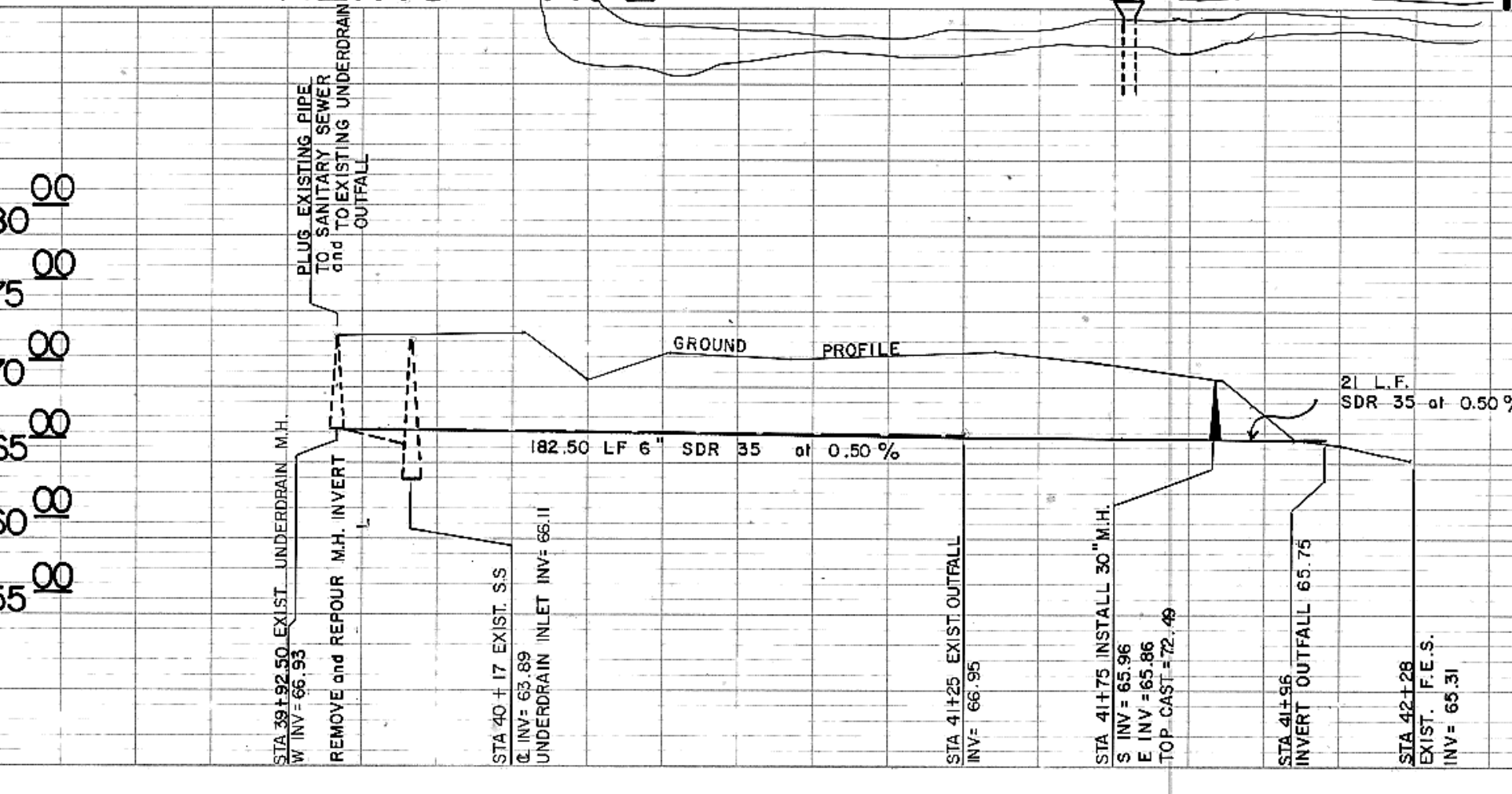
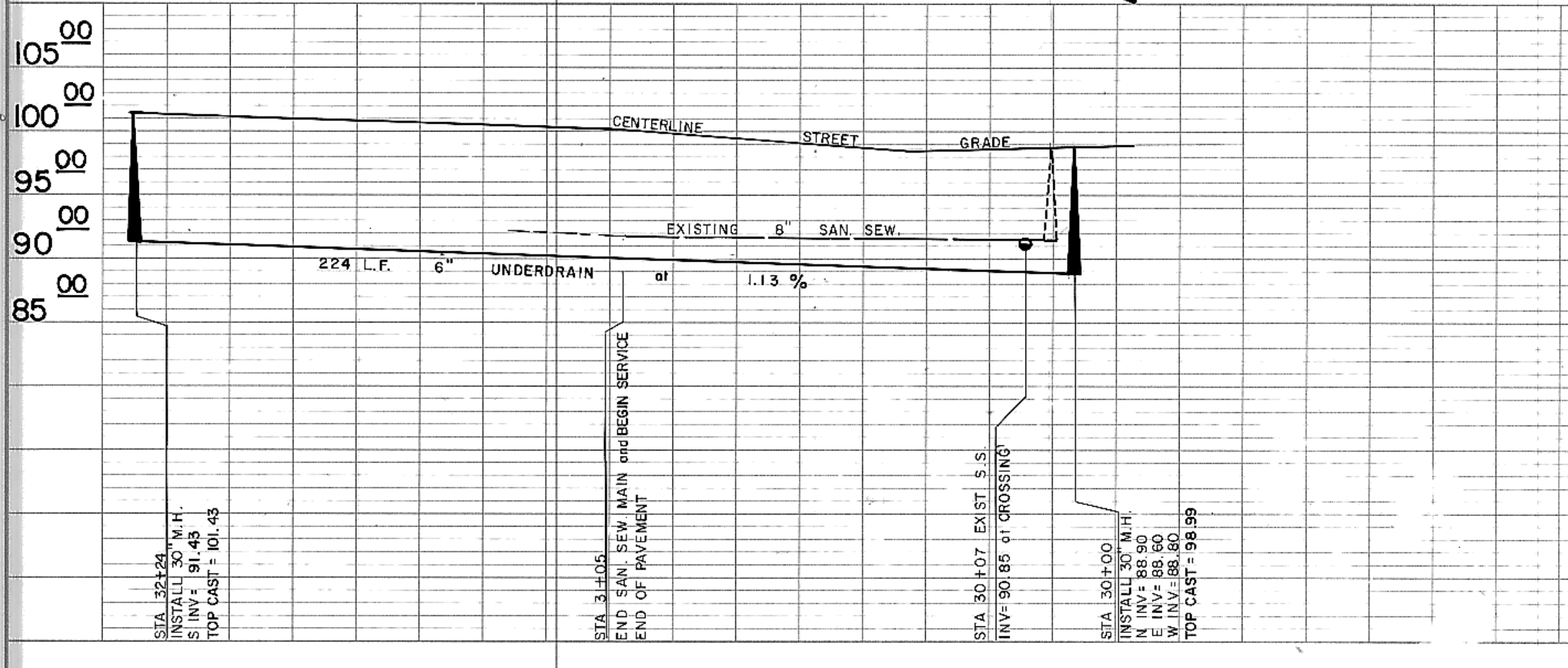
95.00  
90.00  
85.00  
80.00  
75.00



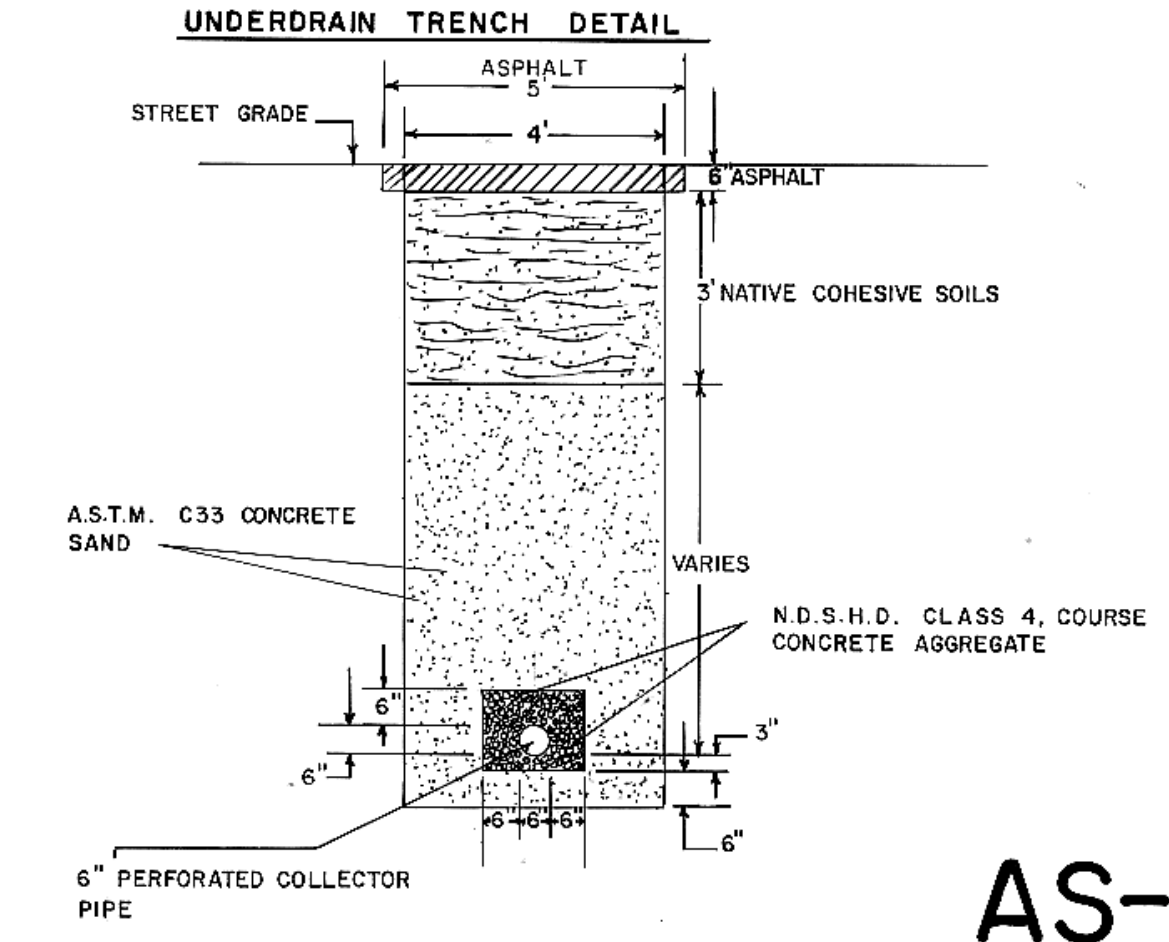
HORZ SCALE 1" = 30'  
 VERT SCALE 1" = 10'



HORZ SCALE 1" = 30'  
 VERT SCALE 1" = 10'



105.00  
100.00  
95.00  
90.00  
85.00



AS-BUILT

CITY OF MANDAN, NORTH DAKOTA ENGINEERING DEPARTMENT			
UNDERDRAIN INSTALLATION ON 3RD AVE. N.W. ON 5TH AVE. N.W. FROM 14TH ST. N.W. NORTH 224' AND 175' ALONG COLLINS AVE.			
CITY ENGR. APPROVED BY: [ ]	ENGR. TOM LITTLE	DRAWN BY: [ ]	BILL BEMENT
CHECKED BY: [ ]		DATE: 4-90	SCALE: 1" = 30'
PROJECT NO. 90-10	DISTRICT NO. 84	SHEET 3 OF 4	