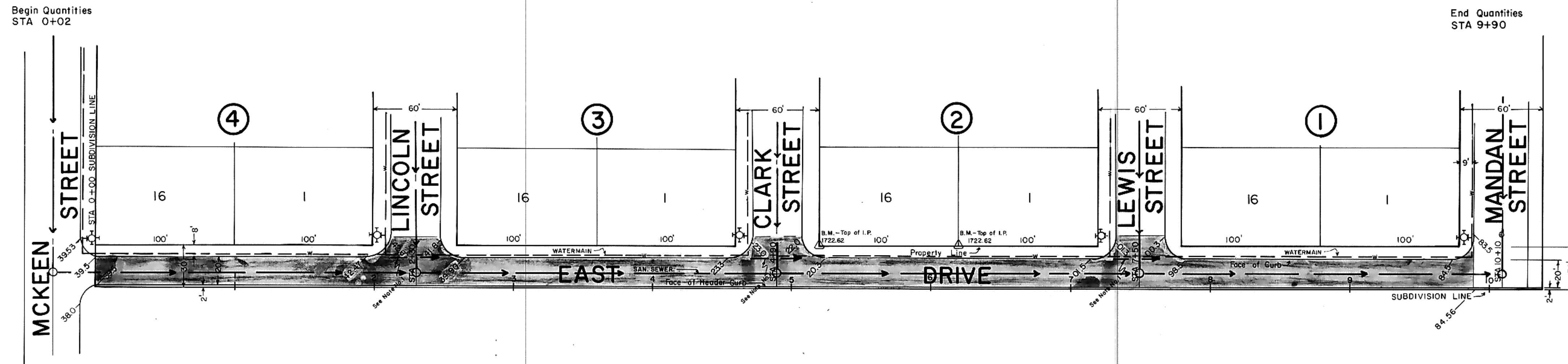


DATE
BY
SURVEYED
PLOTTER
NOTE BOOK
ALIGNMENT CHECKED
NO.

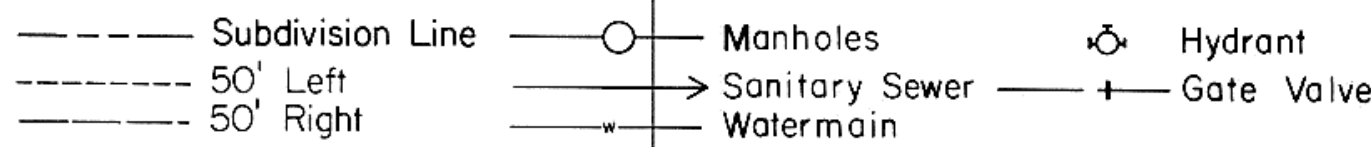
DATE
BY
SURVEYED
PLOTTER
NOTE BOOK
ALIGNMENT CHECKED
NO.



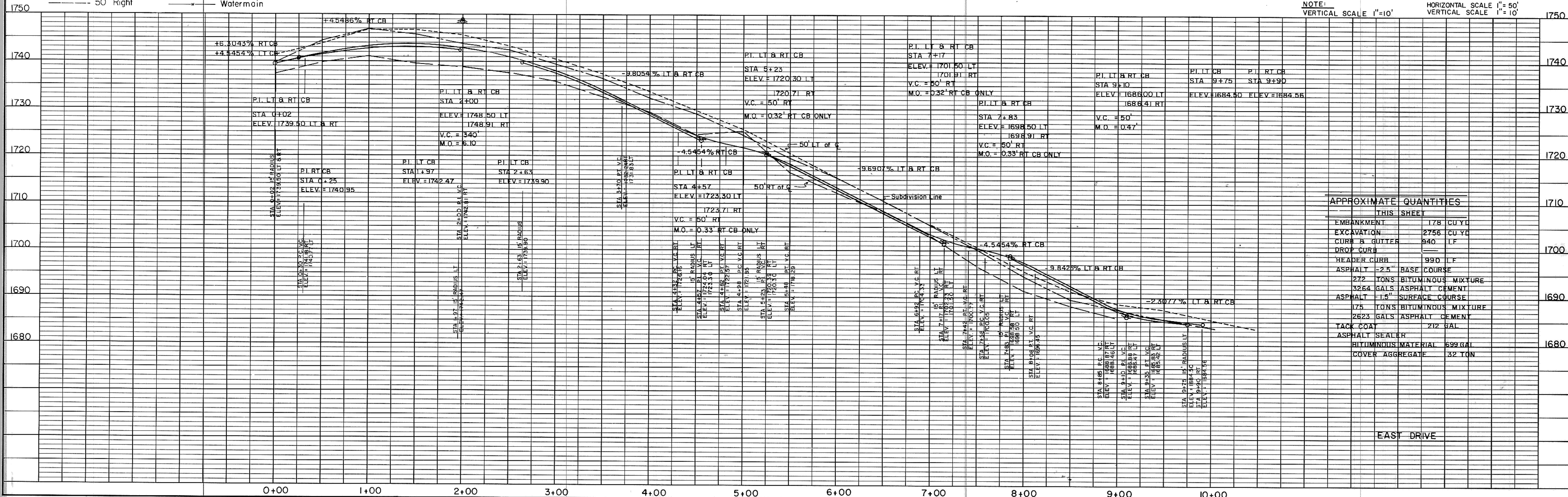
SCALE - 1" = 50'
DATE - NOVEMBER 1976
REVISED - FEBRUARY, 1977



- NOTES**
1. Depress crown to allow drainage to flow across intersection as indicated. Also 1/2" gutter section to allow storm water to flow across intersection.
 2. All curb and gutter radii are 15 feet at face of curb unless otherwise stated.
 3. Water and sewer as per plans by TOMAN ENG.
 4. Sanitary Sewer is existing.
 5. Watermain is proposed; not existing as per date of plans.
 6. Proposed grades are to top of curb.



NOTE: VERTICAL SCALE 1"=10' HORIZONTAL SCALE 1"=50'



APPROXIMATE QUANTITIES

THIS SHEET	QUANTITIES
EMBANKMENT	178 CU YD
EXCAVATION	2756 CU YD
CURB & GUTTER	940 LF
DROP CURB	
HEADER CURB	990 LF
ASPHALT - 2.5" BASE COURSE	272 TONS BITUMINOUS MIXTURE
ASPHALT - 1.5" SURFACE COURSE	3264 GALS ASPHALT CEMENT
ASPHALT - 1.5" SURFACE COURSE	175 TONS BITUMINOUS MIXTURE
ASPHALT - 1.5" SURFACE COURSE	2623 GALS ASPHALT CEMENT
TACK COAT	212 GAL
ASPHALT SEALER	
BITUMINOUS MATERIAL	599 GAL
COVER AGGREGATE	32 TON

K&E PLATE 1, PLAN-PROFILE
KEUFFEL & ESSER CO.
48 7024 MADE IN U.S.A.