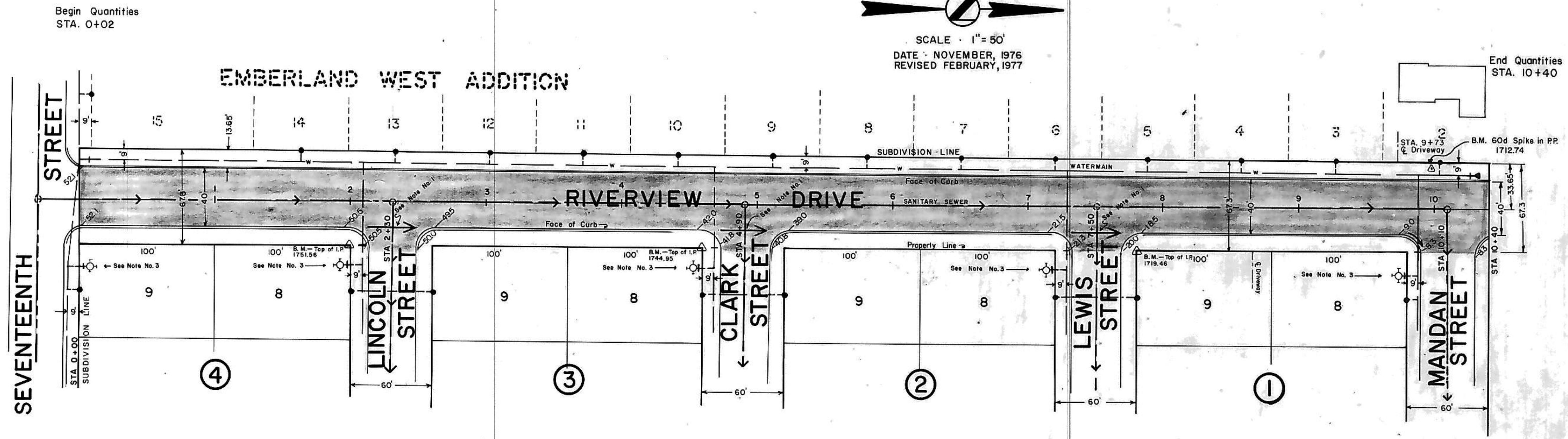


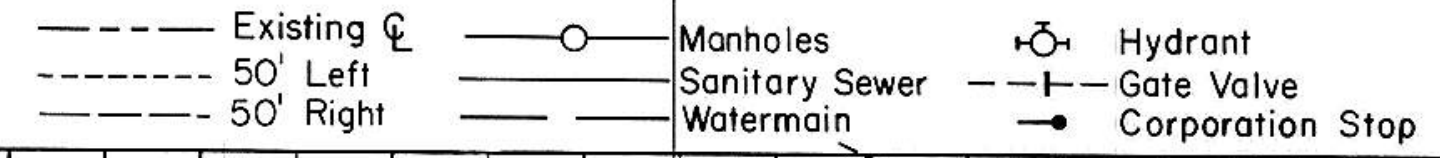
DATE: _____ BY: _____
 SURVEYED: _____ PLOTTED: _____
 NOTE BOOK: _____ ALIGNED: _____
 No. _____ RE-DRAWN: _____

DATE: _____ BY: _____
 SURVEYED: _____ PLOTTED: _____
 NOTE BOOK: _____ ALIGNED: _____
 No. _____ RE-DRAWN: _____

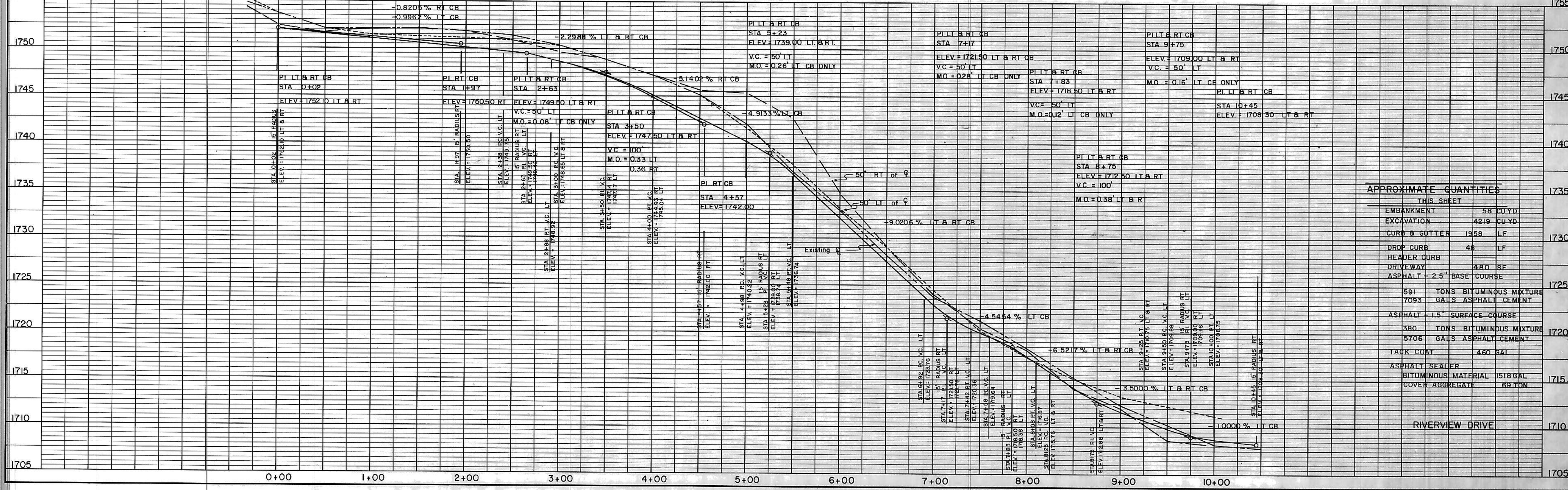


SCALE: 1" = 50'
 DATE: NOVEMBER, 1976
 REVISED FEBRUARY, 1977

- NOTES**
1. Depress crown to allow drainage to flow across intersection as indicated. Also tip gutter section to allow storm water to flow across intersection.
 2. All curb & gutter radii are 15' to face of curb unless otherwise noted.
 3. Water & Sewer as per plans by TOMAN ENG.
 4. Sanitary Sewer is existing.
 5. Watermain is proposed; not existing as per date of plans.
 6. Engineer shall verify location of drop curb prior to construction.
 7. Proposed grades are to top of curb.



HORIZONTAL SCALE: 1" = 50'
 VERTICAL SCALE: 1" = 5'



APPROXIMATE QUANTITIES
 THIS SHEET

EMPAVMENT	58 CU YD
EXCAVATION	4219 CU YD
CURB & GUTTER	1958 LF
DROP CURB	48 LF
HEADER CURB	
DRIVEWAY	480 SF
ASPHALT - 2.5" BASE COURSE	
591 TONS BITUMINOUS MIXTURE	
7093 GALS ASPHALT CEMENT	
ASPHALT - 1.5" SURFACE COURSE	
380 TONS BITUMINOUS MIXTURE	
5706 GALS ASPHALT CEMENT	
TACK COAT	460 GAL
ASPHALT SEALER	
BITUMINOUS MATERIAL	1518 GAL
COVER AGGREGATE	69 TON