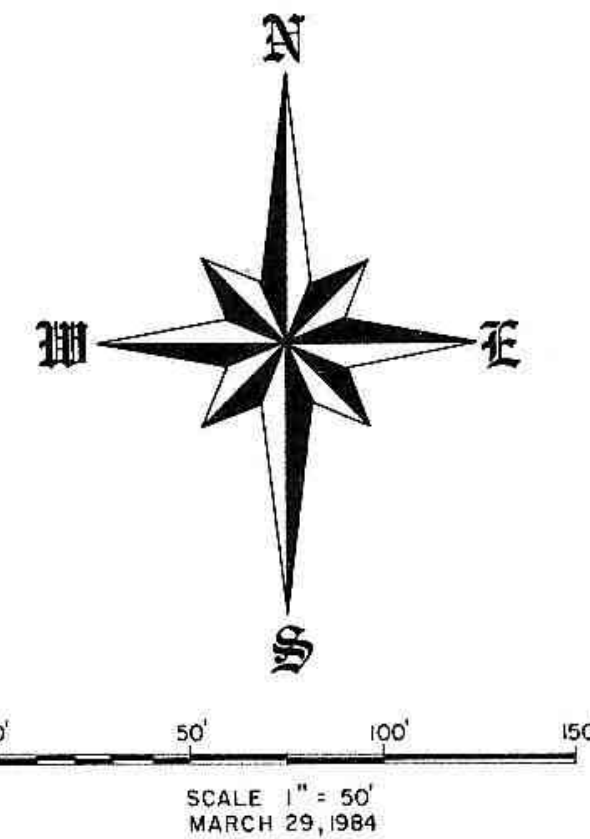


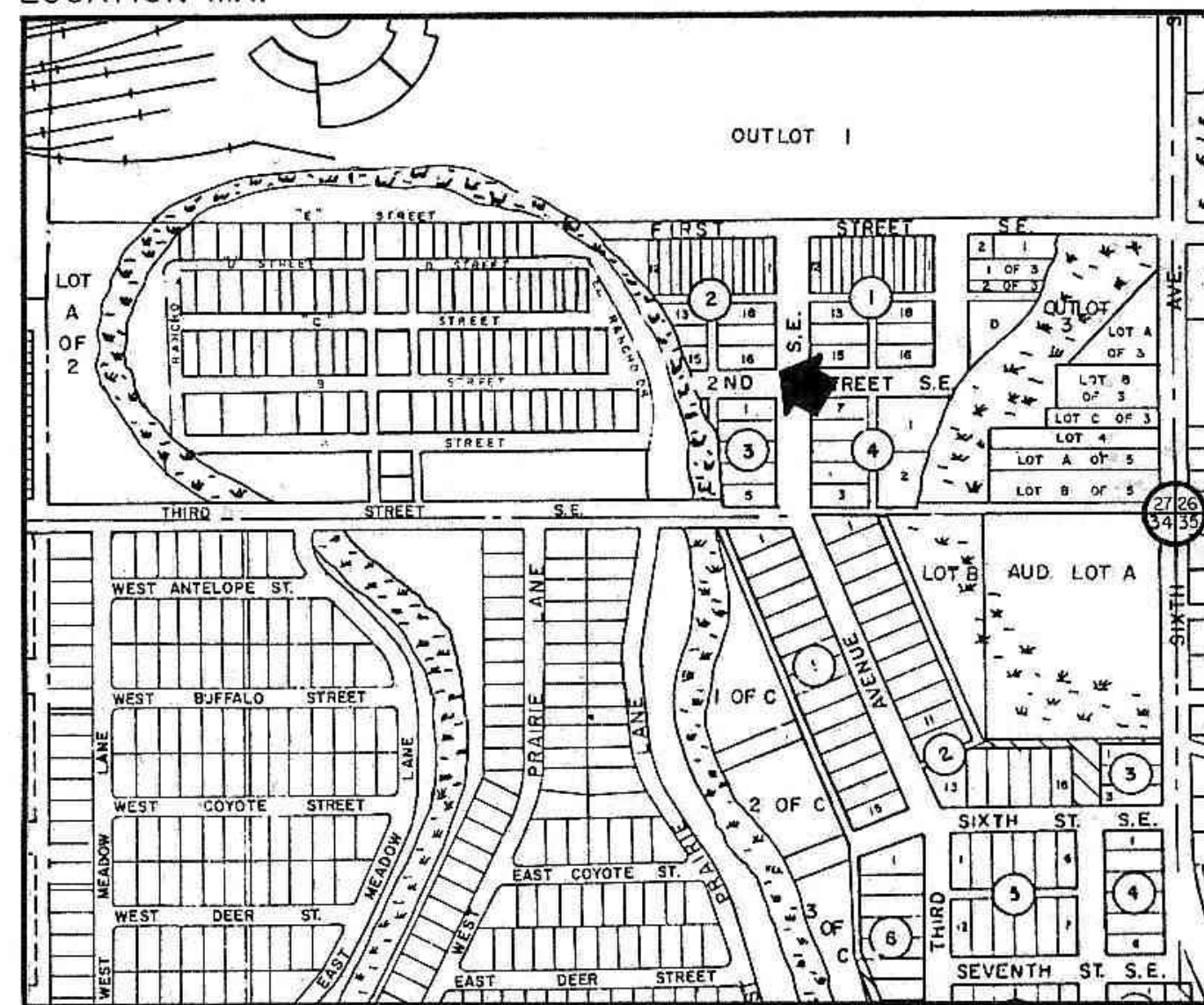
# STREET IMPROVEMENT DISTRICT N<sup>o</sup> 70

## AREA "C"

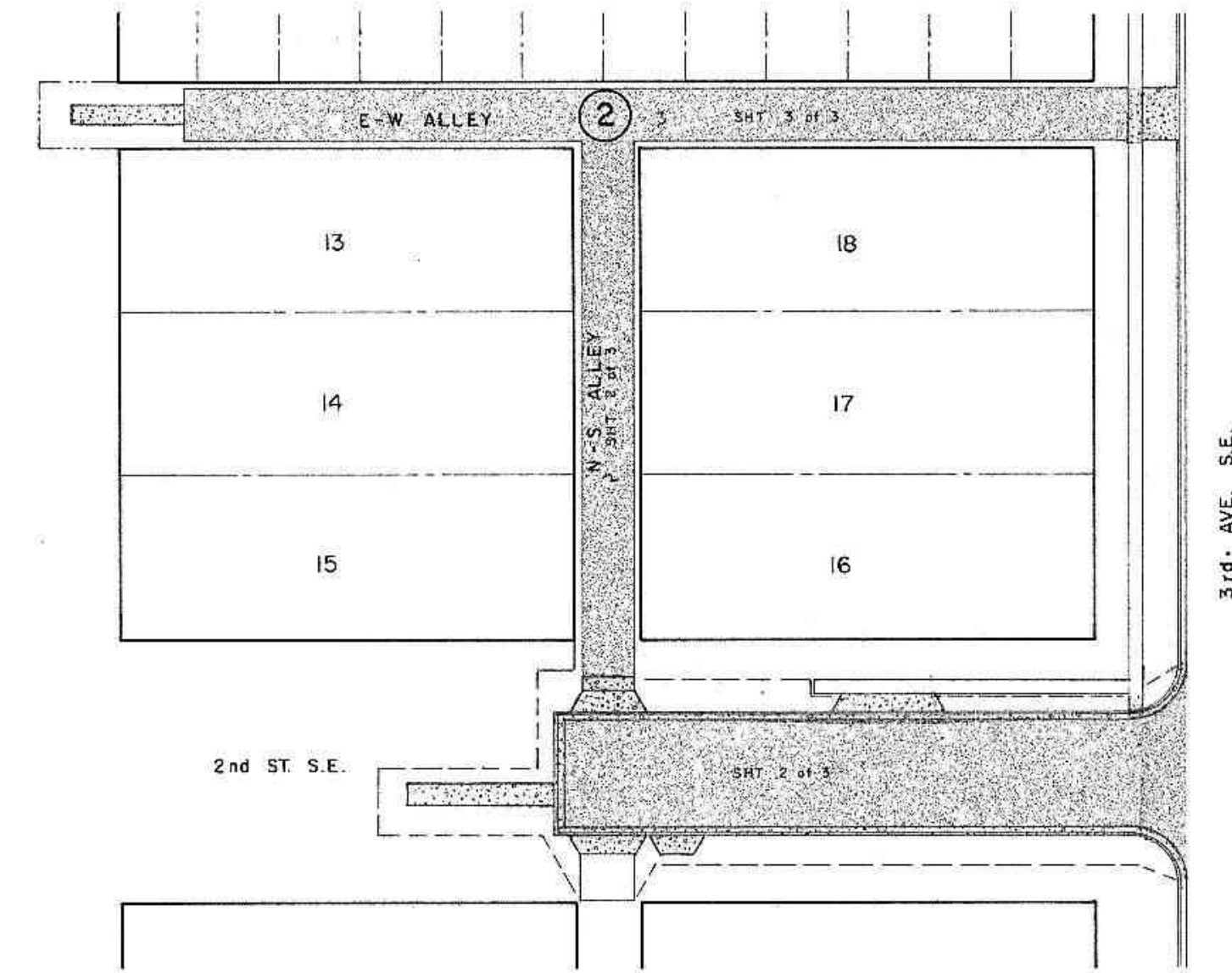
PROJECT N<sup>o</sup> 84-3  
MANDAN NORTH DAKOTA



LOCATION MAP



INDEX	
1 of 3	COVER SHEET
2 of 3	2nd ST. S.E. & N. & S. ALLEY
3 of 3	EAST - WEST ALLEY



**ENGINEER'S CERTIFICATE**

I, LONNIE K. ROMSAAS, A REGISTERED PROFESSIONAL ENGINEER HEREBY CERTIFY THAT THE PLANS FOR STREET IMPROVEMENT DISTRICT NO. 70 "AREA C" TO THE CITY OF MANDAN, NORTH DAKOTA WERE PREPARED UNDER MY SUPERVISION AND ARE COMPLETE AND CORRECT TO THE BEST OF MY KNOWLEDGE AND BELIEF.

*Lonnie K. Romsaas*  
LONNIE K. ROMSAAS  
REGISTERED PROFESSIONAL ENGINEER  
ND REGISTRATION NO. 1983

**APPROVAL OF CITY ENGINEER**

I, THOMAS R. LITTLE, CITY ENGINEER FOR THE CITY OF MANDAN, NORTH DAKOTA, HEREBY APPROVE THE STREET IMPROVEMENT PLANS FOR "AREA C" OF STREET IMPROVEMENT DISTRICT NO. 70 AS SHOWN ON THE ACCOMPANYING PLANS.

*Thomas R. Little*  
THOMAS R. LITTLE, P.E.  
CITY ENGINEER  
MANDAN, NORTH DAKOTA

CIVIL ENGINEERING      LAND PLANNING      LAND SURVEYING

**SWENSON, HAGEN & CO. P.C.**  
Consulting Engineers

PO BOX 1135, 909 BASIN AVENUE  
BISMARCK, NORTH DAKOTA 58501  
701-223-2600

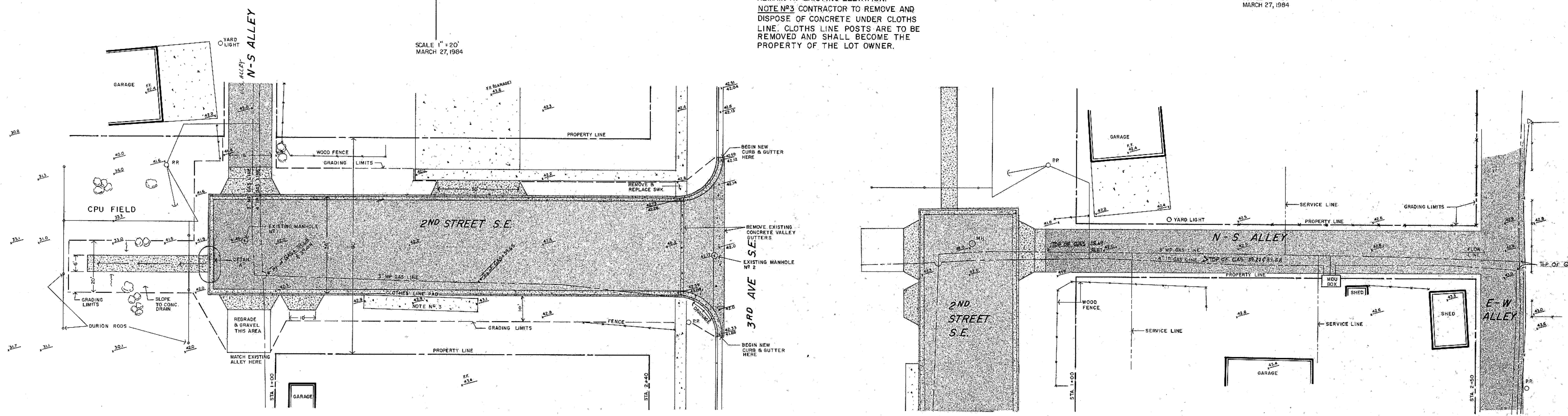
DATE  
BY  
NO. 1  
NO. 2  
NO. 3  
NO. 4  
NO. 5  
NO. 6  
NO. 7  
NO. 8  
NO. 9  
NO. 10  
NO. 11  
NO. 12  
NO. 13  
NO. 14  
NO. 15  
NO. 16  
NO. 17  
NO. 18  
NO. 19  
NO. 20  
NO. 21  
NO. 22  
NO. 23  
NO. 24  
NO. 25  
NO. 26  
NO. 27  
NO. 28  
NO. 29  
NO. 30  
NO. 31  
NO. 32  
NO. 33  
NO. 34  
NO. 35  
NO. 36  
NO. 37  
NO. 38  
NO. 39  
NO. 40  
NO. 41  
NO. 42  
NO. 43  
NO. 44  
NO. 45  
NO. 46  
NO. 47  
NO. 48  
NO. 49  
NO. 50  
NO. 51  
NO. 52  
NO. 53  
NO. 54  
NO. 55  
NO. 56  
NO. 57  
NO. 58  
NO. 59  
NO. 60  
NO. 61  
NO. 62  
NO. 63  
NO. 64  
NO. 65  
NO. 66  
NO. 67  
NO. 68  
NO. 69  
NO. 70  
NO. 71  
NO. 72  
NO. 73  
NO. 74  
NO. 75  
NO. 76  
NO. 77  
NO. 78  
NO. 79  
NO. 80  
NO. 81  
NO. 82  
NO. 83  
NO. 84  
NO. 85  
NO. 86  
NO. 87  
NO. 88  
NO. 89  
NO. 90  
NO. 91  
NO. 92  
NO. 93  
NO. 94  
NO. 95  
NO. 96  
NO. 97  
NO. 98  
NO. 99  
NO. 100

DATE  
BY  
NO. 1  
NO. 2  
NO. 3  
NO. 4  
NO. 5  
NO. 6  
NO. 7  
NO. 8  
NO. 9  
NO. 10  
NO. 11  
NO. 12  
NO. 13  
NO. 14  
NO. 15  
NO. 16  
NO. 17  
NO. 18  
NO. 19  
NO. 20  
NO. 21  
NO. 22  
NO. 23  
NO. 24  
NO. 25  
NO. 26  
NO. 27  
NO. 28  
NO. 29  
NO. 30  
NO. 31  
NO. 32  
NO. 33  
NO. 34  
NO. 35  
NO. 36  
NO. 37  
NO. 38  
NO. 39  
NO. 40  
NO. 41  
NO. 42  
NO. 43  
NO. 44  
NO. 45  
NO. 46  
NO. 47  
NO. 48  
NO. 49  
NO. 50  
NO. 51  
NO. 52  
NO. 53  
NO. 54  
NO. 55  
NO. 56  
NO. 57  
NO. 58  
NO. 59  
NO. 60  
NO. 61  
NO. 62  
NO. 63  
NO. 64  
NO. 65  
NO. 66  
NO. 67  
NO. 68  
NO. 69  
NO. 70  
NO. 71  
NO. 72  
NO. 73  
NO. 74  
NO. 75  
NO. 76  
NO. 77  
NO. 78  
NO. 79  
NO. 80  
NO. 81  
NO. 82  
NO. 83  
NO. 84  
NO. 85  
NO. 86  
NO. 87  
NO. 88  
NO. 89  
NO. 90  
NO. 91  
NO. 92  
NO. 93  
NO. 94  
NO. 95  
NO. 96  
NO. 97  
NO. 98  
NO. 99  
NO. 100

**CONSTRUCTION NOTES**

- NOTE #1: EXISTING MANHOLE #1 WILL BE LOWERED 0.25.
- NOTE #2: EXISTING MANHOLE #2 WILL REMAIN AT EXISTING ELEVATION.
- NOTE #3: CONTRACTOR TO REMOVE AND DISPOSE OF CONCRETE UNDER CLOTHS LINE. CLOTHS LINE POSTS ARE TO BE REMOVED AND SHALL BECOME THE PROPERTY OF THE LOT OWNER.

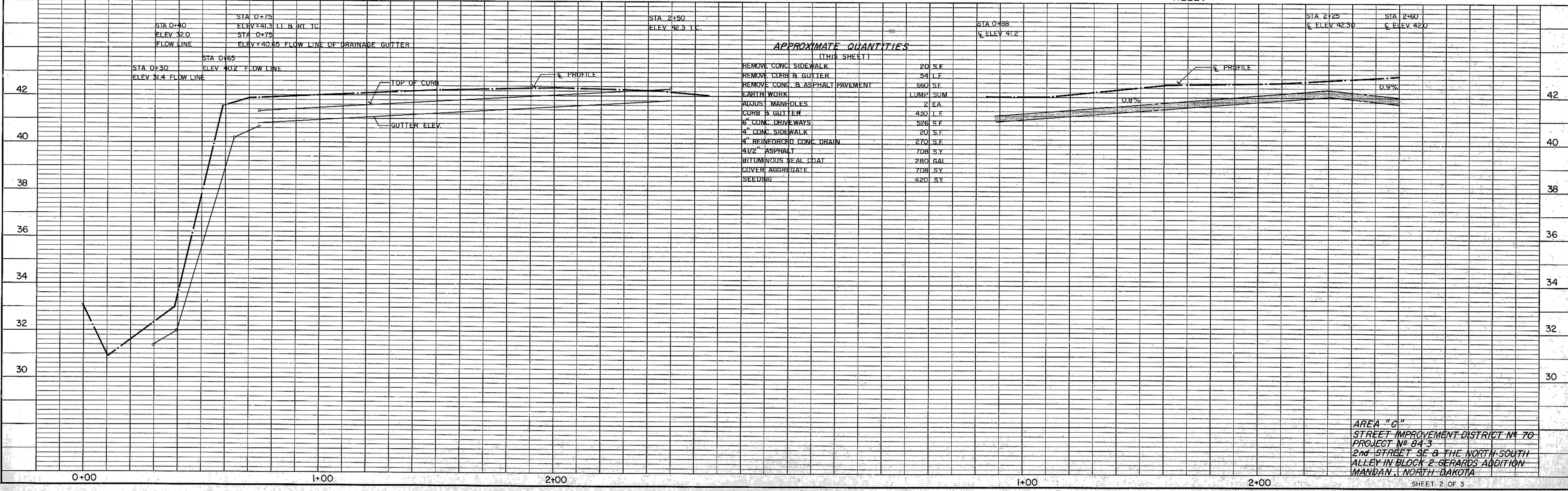
SCALE 1" = 20'  
MARCH 27, 1984



C.P.U. = MDU CATHODIC PROTECTION UNIT

2ND ST. S.E.

ALLEY



**APPROXIMATE QUANTITIES**

(THIS SHEET)

REMOVE CONC. SIDEWALK	20 S.F.
REMOVE CURB & GUTTER	54 L.F.
REMOVE CONC. & ASPHALT PAVEMENT	660 S.F.
EARTH WORK	LUMP SUM
ADJUST MANHOLES	2 EA.
CURB & GUTTER	430 L.F.
6" CONC. DRIVEWAYS	526 S.F.
4" CONC. SIDEWALK	20 S.F.
4" REINFORCED CONC. DRAIN	270 S.F.
4 1/2" ASPHALT	708 S.Y.
BITUMINOUS SEAL COAT	280 GAL.
COVER AGGREGATE	708 S.Y.
SEEDING	420 S.Y.

AREA "G"  
STREET IMPROVEMENT DISTRICT # 70  
PROJECT # 84-3  
2nd STREET S.E. & THE NORTH-SOUTH  
ALLEY IN BLOCK 2 GERARDS ADDITION  
MANDAN, NORTH DAKOTA

DATE  
BY  
DRAWN BY  
CHECKED BY  
DATE  
BY  
DATE  
BY

**PLAN**  
NOTE BOOK  
No.

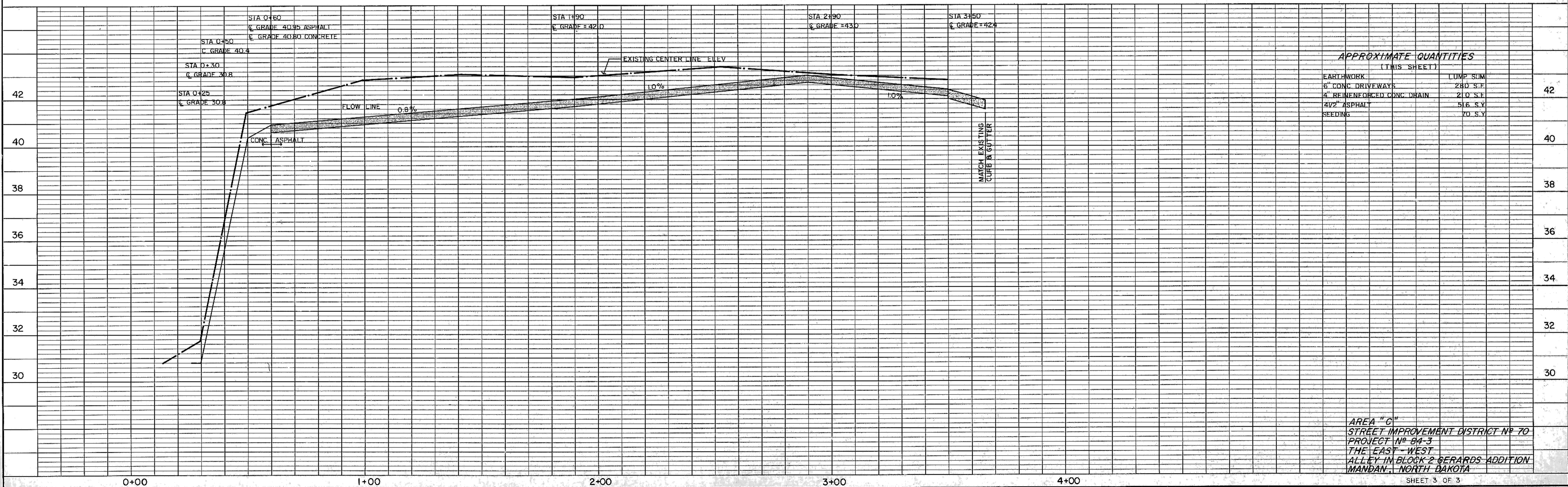
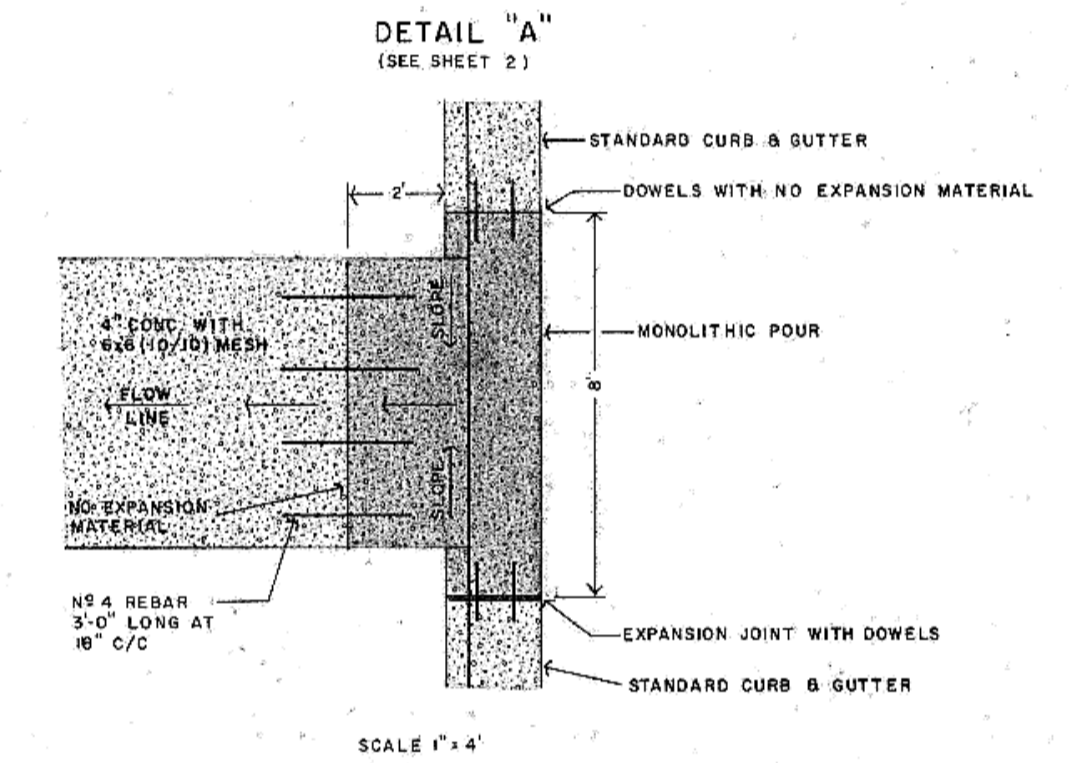
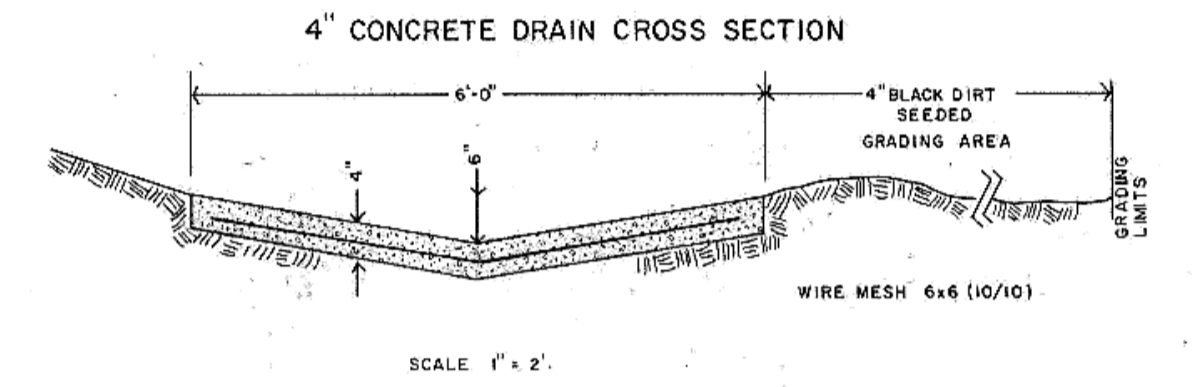
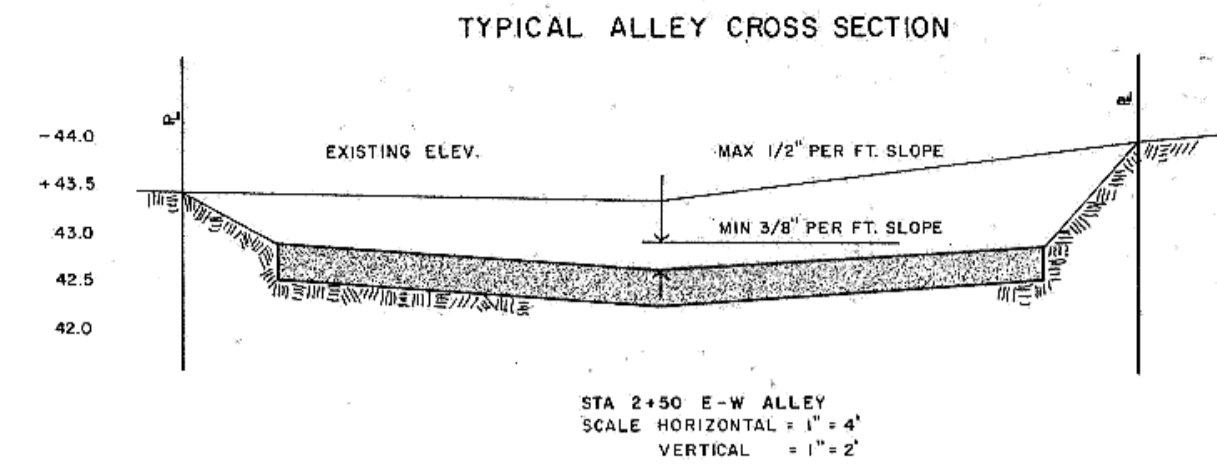
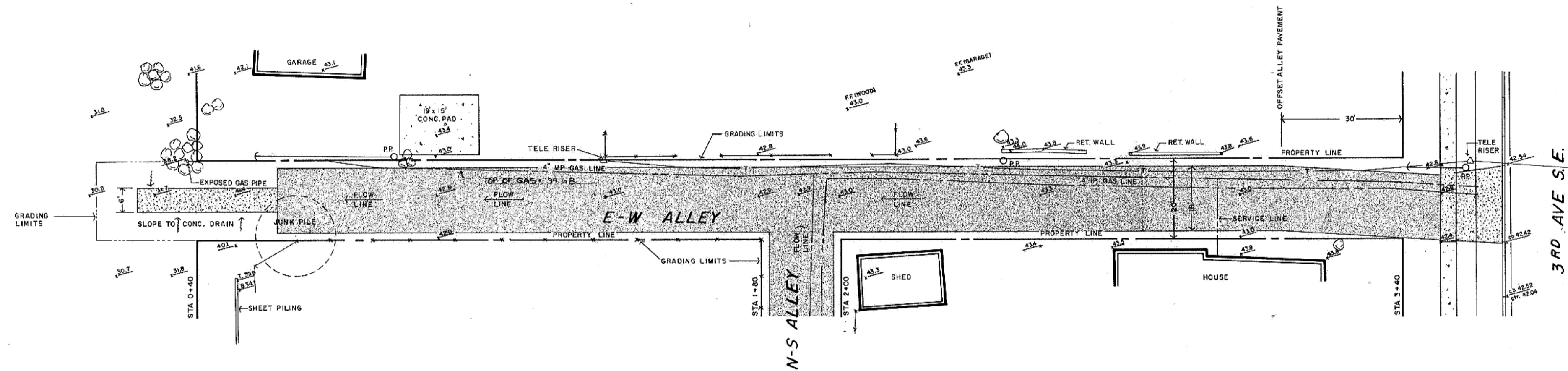
ALIGNMENT CHECKED  
RT. OF WAY CHECKED

DATE  
BY  
DRAWN BY  
CHECKED BY  
DATE  
BY  
DATE  
BY

**PROFILE**  
NOTE BOOK  
No.

GRADE CHECKER  
B. M.'S. NOTED  
VERTICAL CURVES CHECKED

N  
SCALE 1" = 20'  
MARCH 28, 1984



AREA "C"  
STREET IMPROVEMENT DISTRICT NO 70  
PROJECT NO 84-3  
THE EAST-WEST  
ALLEY IN BLOCK 2 GERARDS ADDITION  
MANDAN, NORTH DAKOTA

SHEET 3 OF 3

SWENSON HAGEN & CO.  
BISMARCK, NORTH DAKOTA