

BEGIN QUANTITIES
STA. 13+05.41

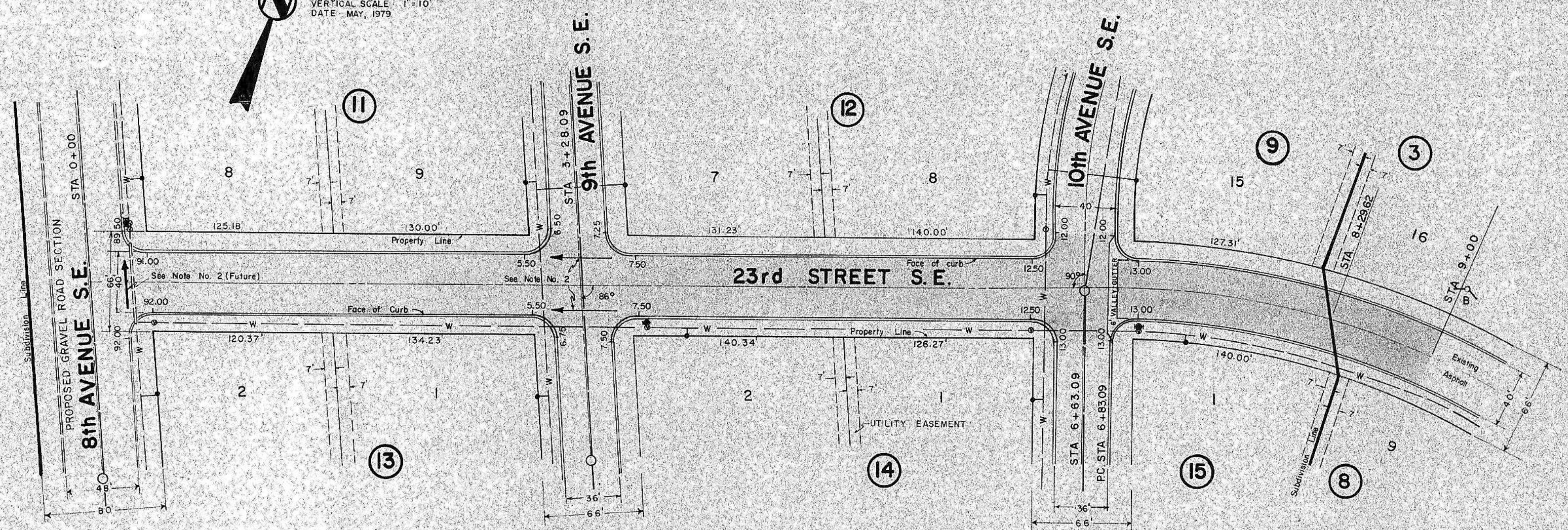
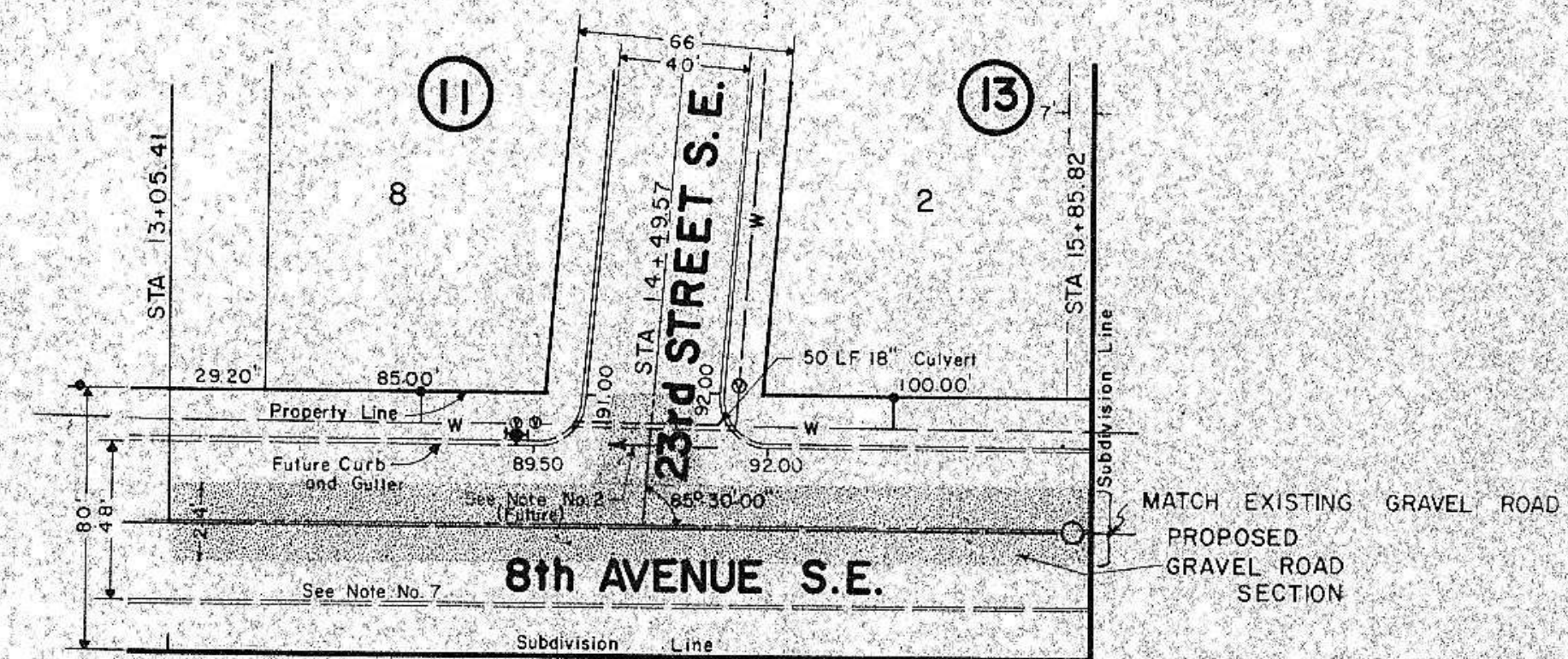
END QUANTITIES
STA. 15+85.82

BEGIN QUANTITIES
STA. 0+36.37

END QUANTITIES
STA. 9+00

HORIZONTAL SCALE 1"=50'
VERTICAL SCALE 1"=10'
DATE - MAY, 1979

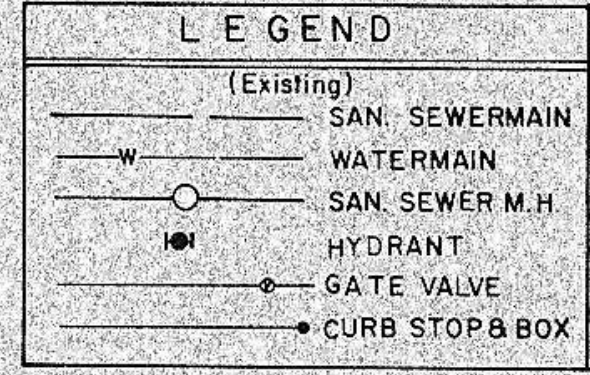
HORIZONTAL SCALE 1"=50'
VERTICAL SCALE 1"=10'
DATE - MAY, 1979



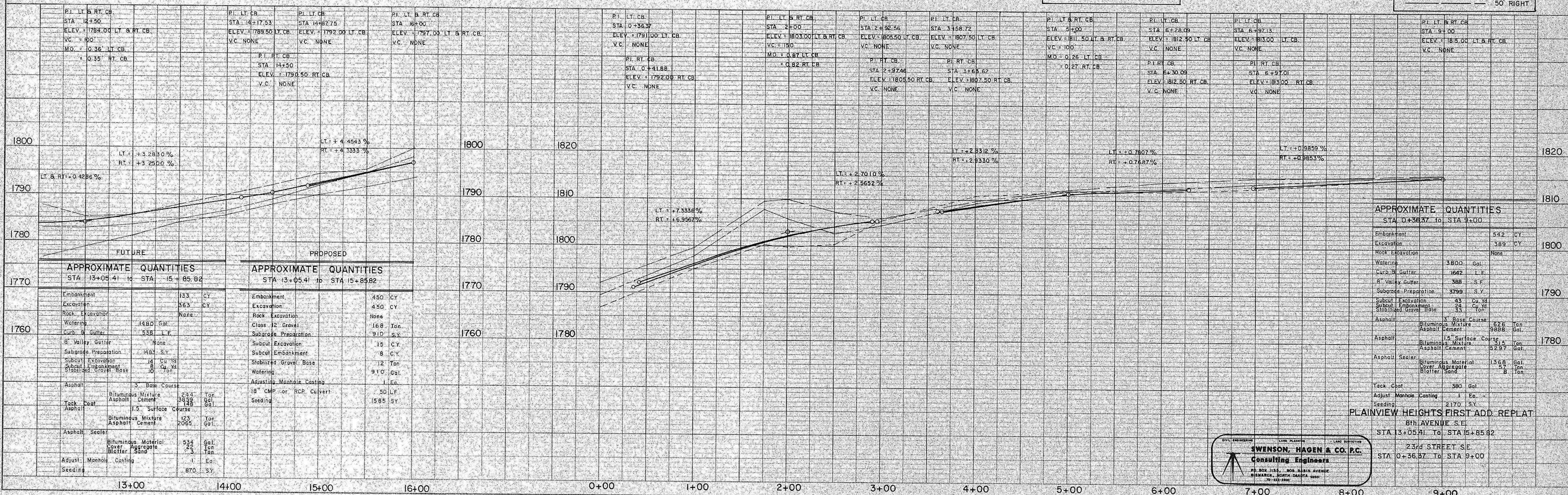
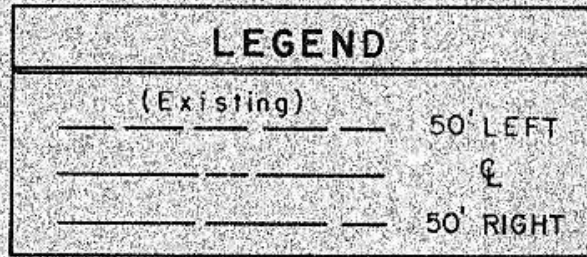
CONSTRUCTION NOTES:

- 1) Preliminary street grading has been done by others.
- 2) Depress crown and tip gutter section to allow drainage as shown. (Future)
- 3) All dimensions shown are to face of curb unless otherwise stated.
- 4) All radii at intersections shall be 15' to face of curb unless otherwise stated.
- 5) All elevations shown are to top of curb unless otherwise stated.
- 6) Sewer and Water Improvements shall be completed prior to curb and gutter and asphalt construction. The contractor shall be responsible for the preservation of those improvements and other existing utilities.
- 7) Street as shown above is for future construction. A 24' wide gravel surfaced road shall be built to County Section Standards. (See Sh. 2 of 6)
- 8) Class 12 gravel shall be used for road surface.
- 9) Side slopes on approaches shall have a 1" asphalt apron to prevent erosion at the end of the curb and gutter.
- 10) Straw bales shall be placed in ditches as directed by the Engineer to prevent erosion. Cost shall be incidental to other items. A maximum of 20 bales will be used.

- 11) All street right-of-way shall be seeded to grass from the edge of the street or road bed to the property line.
- 12) Class IV seeding shall be required.
- 13) Extra rings required to adjust manholes to proper grade shall be incidental to other items.
- 14) A 16-20-0 fertilizer spread at the rate of 3 pounds per 100 square yards shall be used prior to seeding.



LEGEND
 (Existing) 50' LEFT
 50' RIGHT



APPROXIMATE QUANTITIES
STA. 0+36.37 to STA. 9+00

Embankment	542 CY
Excavation	389 CY
Rock Excavation	None
Watering	1800 Gal.
Curb & Gutter	1642 L.F.
8" Valley Gutter	588 S.F.
Subgrade Preparation	3799 S.Y.
Subcut Excavation	43 Cu. Yd.
Subcut Embankment	24 Cu. Yd.
Stabilized Gravel Base	53 Ton
Asphalt	3 Base Course
Bituminous Mixture	628 Ton
Asphalt Cement	9888 Gal.
Asphalt	1.5" Surface Course
Bituminous Mixture	314 Ton
Asphalt Cement	5297 Gal.
Asphalt Sealer	
Bituminous Material	1566 Gal.
Gravel Aggregate	17 Ton
Adjust. Manhole Casting	1 Ea.
Tack Coat	380 Gal.
Adjust. Manhole Casting	1 Ea.
Seeding	2170 S.Y.

PLAINVIEW HEIGHTS FIRST ADD. REPLAT
 STA. 13+05.41 to STA. 15+85.82
 23rd STREET S.E.
 STA. 0+36.37 to STA. 9+00

SWENSON, HAGEN & CO. P.C.
 Consulting Engineers
 P.O. BOX 1124 - 306 N. MAIN AVENUE
 BISMARCK, NORTH DAKOTA 58101
 701-733-3300