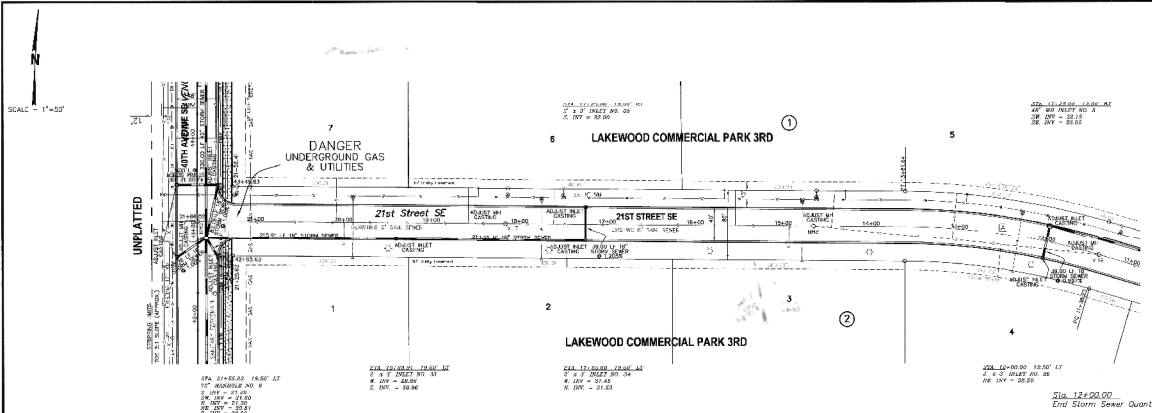


CONSTRUCTION NOTES (THIS SHEET)
 1. 21ST STREET SE AND SHOULDER SHALL BE BUILT TO 12" BELOW HWP OF CURB, 80% OF THE COMPLETION OF THE WATER AND SANITARY SEWER CONTRACT.



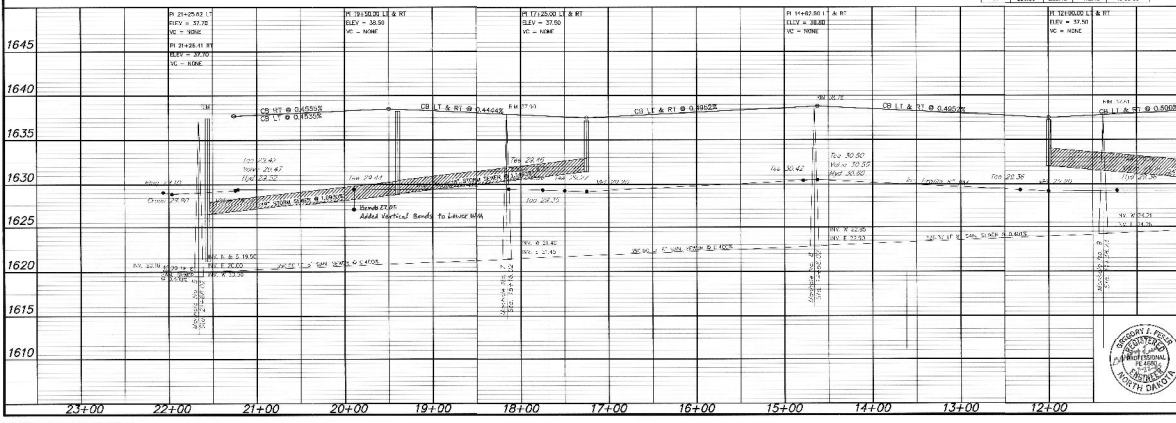
Sta. 21+55.83
 Begin Storm Sewer Quantities
 Sta. 21+25.62 LL
 Begin Curb & Gutter, Asphalt
 Sta. 21+26.41 RL
 Begin Curb & Gutter, Asphalt

STORM SEWER MANHOLE AND INLET SCHEDULE

MANHOLE NO.	INLET NO. 21	INLET NO. 22	INLET NO. 23	INLET NO. 24	INLET NO. 25
MANHOLE DIA.	2' X 3'	2' X 3'	2' X 3'	2' X 3'	48"
CASTING TIME	100.00	100.00	100.00	100.00	100.00
INLET/OUTLET ELEV.	37.96	37.00	37.00	37.00	37.00
TOP OF CONCRETE	37.77	36.21	36.21	36.21	35.88
INVERT (2)	28.86	31.43	30.80	30.50	30.05
INVERT (2)	28.86	31.23	30.80	30.50	30.13

CURVE DATA

CHAINAGE	TRANSIT TANGENT	DELTA
A	805.07	233.47
B	233.47	102.13
C	102.13	110.00



APPROXIMATE QUANTITIES

GRADING ITEMS	1.15
Grading	1.15
Subgrade Watering	27.00
Excavation	4.15
Backfilling	4.15
ASPHALT ITEMS	
3" AC Base Course (Class D)	630.00
2" AC Surface Course (Class B)	423.00
Bituminous Tack Oil	380.00
Aggregate Seal Course	380.00
Adjust Manhole Coating	2.00
CONCRETE ITEMS	
Standard Curb & Gutter	1844.00
Adjust Inlet Casting	5.00
Adjust Valve Box	9.00
STORM SEWER ITEMS	
18" RCP Storm Sewer	509.00
24" Inlet	7.00
48" Manhole Inlet	7.00
MISCELLANEOUS ITEMS	
Signage	1.00



21ST STREET SE
 FROM 10TH AVENUE SE TO 060' EAST
 OF 40TH AVENUE SE
 STREET IMPROVEMENT DISTRICT NO. 133
 SHEET C9 OF 19 PROJECT 2005-16
 MANDAN, ND JULY 22, 2005
 Copyright 2005 Swenson, Hagen & Co.

PlotDate: 2005/07/22 10:00 AM