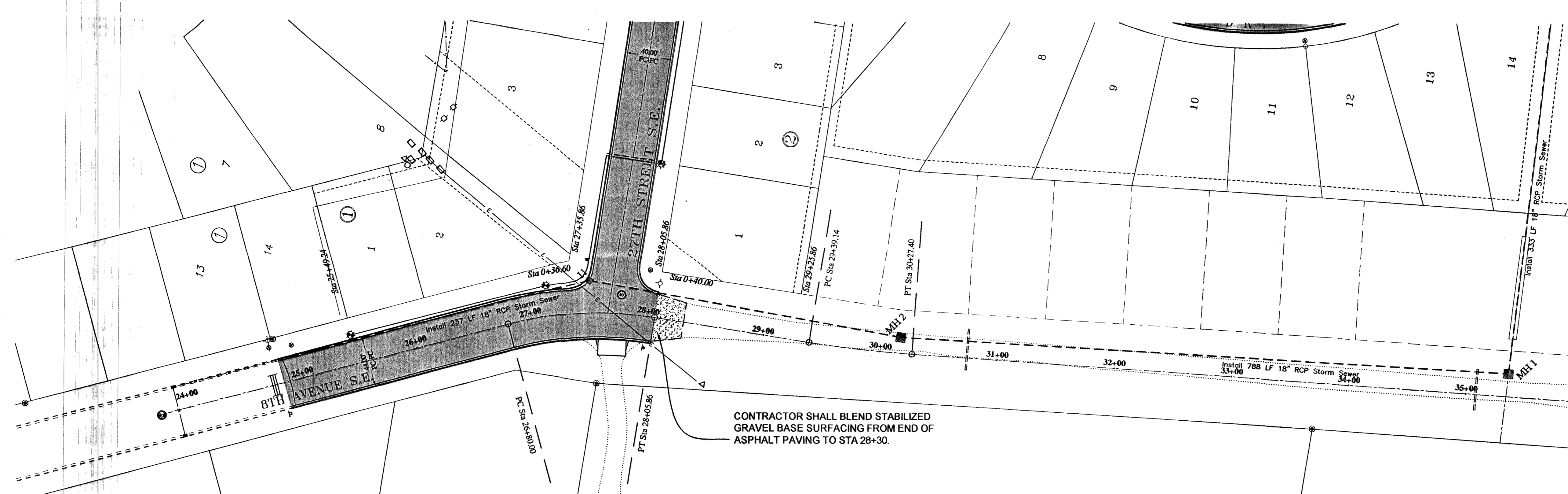


INLET #1 TYPE A
STA 27+51.10, 28.2' LT

STORM MH #2 TYPE 48"
STA 30+16.88, 13.8' LT

STORM MH #1 TYPE 48"
STA 35+34.86, 21.5' LT



CONTRACTOR SHALL BLEND STABILIZED GRAVEL BASE SURFACING FROM END OF ASPHALT PAVING TO STA 28+30.

Depressed Curb Table
Sta 25+21.60, 20.5' LT, 28' Driveway
Sta 25+92.17, 20.5' LT, 28' Driveway
Sta 28+65.87, 20.5' LT, 28' Driveway

BOP 23+75.00
N 413807.97
E 1873714.23

Begin Paving Quantities
Sta 24+83.49

CL Curve Data
Da 19°05'55" PI Sta 27+43.88
T 63.88 N 413473.65
R 300.00 E 1873870.11
L 125.87 1.24°02'24"R

End Paving Quantities
Sta 28+05.86

CL Curve Data
Da 05°43'46" PI Sta 29+83.30
T 44.16 N 413232.38
R 1000.00 E 1873874.15
L 88.26 1.05°03'26"L

End Storm Sewer Quantities
Sta 35+34.86

PI Sta 24+83.49 Lt & Rt PI EI 1817.65 Begin Curb	PI Sta 25+50.00 Lt & Rt PI EI 1818.13 Curve Len 100.00	PI Sta 26+85.86 Lt PI EI 1824.90	PI Sta 27+35.86 Lt PI EI 1827.40	PI Sta 27+50.00 Rt PI EI 1828.13 Curve Len 150.00	PI Sta 28+05.86 Lt & Rt PI EI 1827.40 End Curb Lt & Rt	PI Sta 36+00.00 (Future) PI EI 1824.73 Curve Len 200
--	--	-------------------------------------	-------------------------------------	---	--	--

CONSTRUCTION NOTES

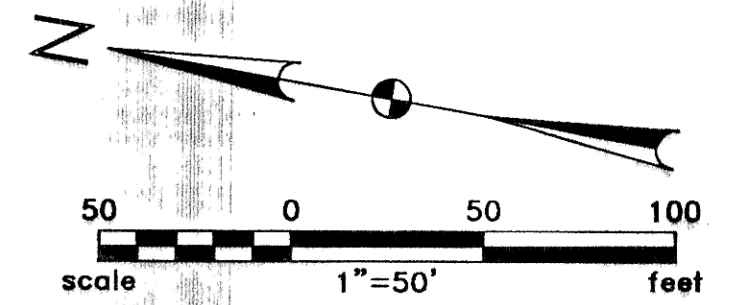
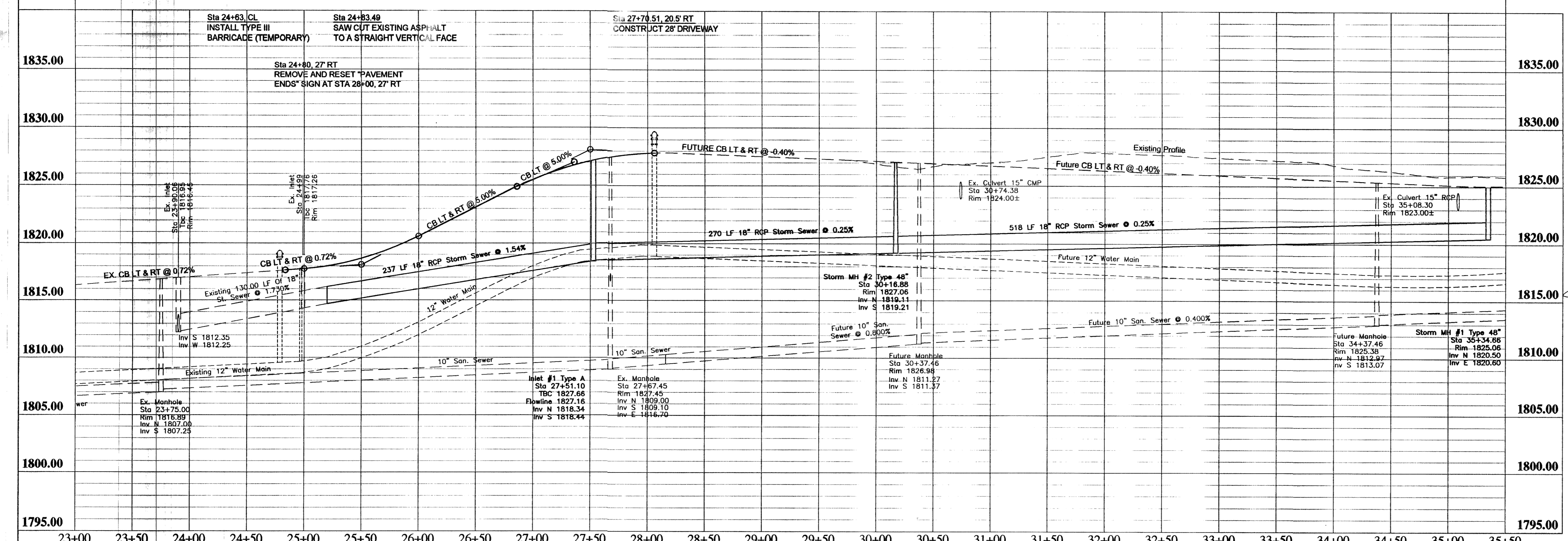
- UTILITY LOCATIONS SHOWN ON THE PLANS ARE APPROXIMATE. THE CONTRACTOR SHALL BE RESPONSIBLE FOR LOCATING ALL UTILITIES PRIOR TO ANY CONSTRUCTION ACTIVITY. THE NORTH DAKOTA "ONE-CALL" NUMBER IS 1-800-795-0555.
- APPROXIMATE TOP OF ROAD SUBGRADE SHALL BE BY OTHERS, PRIOR TO CONSTRUCTION. CONTRACTOR WILL HAVE TO SHAPE SUBGRADE AS REQUIRED TO CONSTRUCT ROADWAYS.
- CONTRACTOR SHALL PROTECT ALL SURVEY MONUMENTS. MONUMENTS SHALL BE LOCATED AND MARKED BY THE OWNER'S REPRESENTATIVE. MONUMENTS DISTURBED OR DESTROYED SHALL BE REPLACED BY THE OWNER'S REPRESENTATIVE AT THE CONTRACTOR'S EXPENSE.
- THE CONTRACTOR SHALL REMOVE AND DISPOSE OF ALL ASPHALT PAVEMENT AND CURB & GUTTER TO A LEGAL OFF SITE LOCATION AS REQUIRED TO MAKE TIE-INS TO THE EXISTING STREETS.
- THE CITY OF MANDAN WILL HIRE AN INDEPENDENT TESTING LABORATORY TO COMPLETE ALL REQUIRED TESTING. SCHEDULING AND COORDINATION OF ALL TESTING WILL BE THE CONTRACTOR'S RESPONSIBILITY.
- REMOVAL AND RESET OF "PAVEMENT ENDS" SIGN SHALL BE INCIDENTAL TO OTHER BID ITEMS.

Structure Number	Inlet 1	MH 2	MH 1
Top of Curb	1827.66	1827.06	1825.06
Top P.C. Section	1826.66	1826.02	1824.02
Invert Elev. N	1819.34	1819.11	1820.50
Invert Elev. E	-	-	1820.60
Invert Elev. S	1818.44	1819.21	-
Invert Elev. W	-	-	-
Length P.C. Section	8.32'	6.81'	3.52'

APPROXIMATE QUANTITIES

Paving Items	Quantity
Watering	8 Mgal
Subgrade Preparation	1733 Sq
Stabilized Gravel Base	16 Ton
AC Stabilized Base	209 Ton
Asphalt Cement - Base (PG58-28)	13 Ton
AC Surfacing Course	167 Ton
Asphalt Cement - Surface (PG58-28)	11 Ton
Bituminous Tack Coat	75 Gal
Bituminous Seal Coat	511 Gal
Cover Aggregate	21 Ton
Blotter Sand	1 Ton
6" Concrete Driveway	341 SF
Curb and Gutter (Unreinforced)	599 LF
Adjust Manhole Casting	1 EA
Type III Barricade (Temporary)	1 EA

Storm Sewer Items	Quantity
Pitrun Gravel	254 Ton
Subcut Gravel	20 Ton
18" RCP Sewer	1024 LF
Concrete Manhole 48"	2 EA
Type A 36" Inlet	1 EA



RECORD DRAWING

Rev'd. PLAINVIEW HEIGHTS TENTH ADDITION STREET IMPROVEMENT DISTRICT NO. 2006-01 MANDAN, NORTH DAKOTA SHEET NO. 5

Kadmas Lee & Jackson
Engineers Surveyors Planners

8TH AVENUE S.E. PLAN AND PROFILE

DRWN. BY: ADA CHK'D BY: TK CMPR. NO.: 1406104 DATE: 05/05/06

J:\municipal\1406104 - Plainview 10th Streets\CADD\EXP\BTHAVE_PAVING.dwg © Kadmas, Lee & Jackson, Inc. 2006