

- CONSTRUCTION NOTES**
- UTILITY LOCATIONS SHOWN ON THE PLANS ARE APPROXIMATE. THE CONTRACTOR SHALL BE RESPONSIBLE FOR LOCATING ALL UTILITIES PRIOR TO ANY CONSTRUCTION ACTIVITY. THE NORTH DAKOTA "ONE-CALL" NUMBER IS 1-800-795-0555.
 - APPROXIMATE TOP OF ROAD SUBGRADE SHALL BE BY OTHERS. PRIOR TO CONSTRUCTION, CONTRACTOR WILL HAVE TO SHAPE SUBGRADE AS REQUIRED TO CONSTRUCT ROADWAYS.
 - CONTRACTOR SHALL PROTECT ALL SURVEY MONUMENTS. MONUMENTS SHALL BE LOCATED AND MARKED BY THE OWNER'S REPRESENTATIVE. MONUMENTS DISBURSED OR DESTROYED SHALL BE REPLACED BY THE OWNER'S REPRESENTATIVE AT THE CONTRACTOR'S EXPENSE.
 - THE CONTRACTOR SHALL REMOVE AND DISPOSE OF ALL ASPHALT PAVEMENT AND CURB & GUTTER TO A LEGAL OFF SITE LOCATION AS REQUIRED TO MAKE TIE-INS TO THE EXISTING STREETS.
 - THE CITY OF MANDAN WILL HIRE AN INDEPENDENT TESTING LABORATORY TO COMPLETE ALL REQUIRED TESTING, SCHEDULING AND COORDINATION OF ALL TESTING WILL BE THE CONTRACTOR'S RESPONSIBILITY.
 - REMOVAL AND RESET OF "PAVEMENT ENDS" SIGN SHALL BE INCIDENTAL TO OTHER BID ITEMS.

Structure Number	Inlet 1	MH 2	MH 1
Top of Ditch	1827.66	1827.06	1825.06
Top P.C. Section	1826.66	1826.02	1824.02
Invert Elev. N	1818.34	1818.11	1820.60
Invert Elev. E	-	-	1820.60
Invert Elev. S	1818.24	1818.21	-
Invert Elev. W	-	-	-
Length P.C. Section	8.32'	6.81'	3.82'

Documented Curb Table

Sta 25+21.80, 20.5' LT, 20' Driveway	Sta 25+45.97, 20.5' LT, 20' Driveway
Sta 25+42.17, 20.5' LT, 20' Driveway	Sta 25+45.97, 20.5' LT, 20' Driveway

Depth Paving Quantities

Sta 24+83.49	Sta 24+83.49
Sta 25+14.70	Sta 25+14.70

CL Curve Data

Sta 19+08.90*	PI Sta 27+43.88
T 83.88	N 415473.65
R 300.00	E 187380.11
L 126.87	124°02'29"

End Paving Quantities

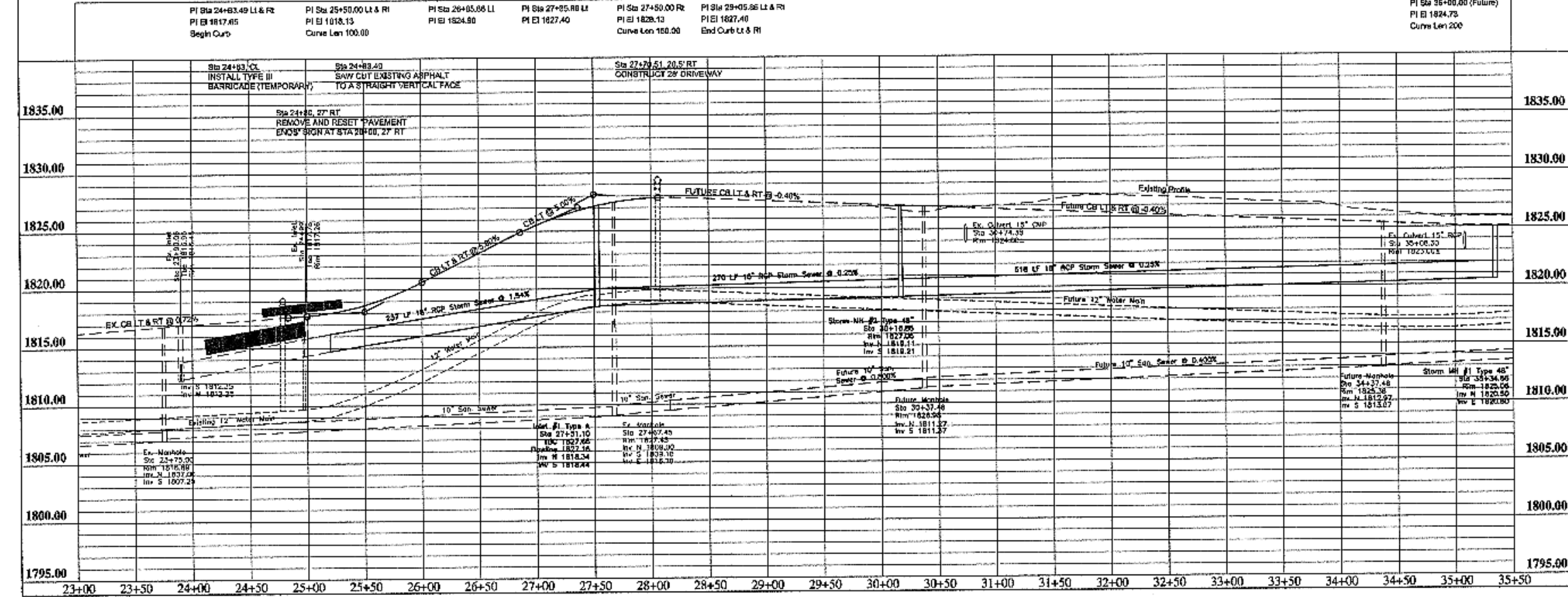
Sta 21+85.86	Sta 21+85.86
--------------	--------------

CL Curve Data

Sta 09+43.48*	PI Sta 29+83.30
T 44.16	N 415002.38
R 1000.00	E 1572874.15
L 68.28	105°02'26"

End Slope Range Quantities

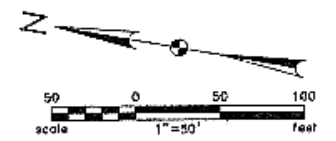
Sta 25+34.66	Sta 25+34.66
--------------	--------------



APPROXIMATE QUANTITIES

Paving Items	Quantity
Watering	8 Mgd
Subgrade Preparation	1733 SY
Stabilized Gravel Base	16 Ton
AC Stabilized Base	209 Ton
Asphalt Cement - Base (PG58-28)	13 Ton
AC Surfacing Course	167 Ton
Asphalt Cement - Surface (PG58-28)	11 Ton
Bituminous Tack Coat	75 Gal
Bituminous Seal Coat	511 Gal
Cover Aggregate	21 Ton
Blotter Sand	1 Ton
6" Concrete Driveway	341 SF
Curb and Gutter (Unreinforced)	599 LF
Adjust Manhole Casting	1 EA
Type III Barricade (Temporary)	1 EA

Storm Sewer Items	Quantity
Pitrun Gravel	254 Ton
Subcut Gravel	20 Ton
18" RCP Sewer	1024 LF
Concrete Manhole 48"	2 EA
Type A 36" Inlet	1 EA



RECORD DRAWING

PLAINVIEW HEIGHT'S TENTH ADDITION
STREET IMPROVEMENT DISTRICT NO. 2006-01
MANDAN, NORTH DAKOTA

Kadmas Lee & Jackson
REGISTERED SURVEYORS
PLANNERS

8TH AVENUE S.E.
PLAN AND PROFILE

DATE: 05/05/06
BY: T.K.
CHECKED: T.K.
SCALE: AS SHOWN