

ST INLET #1
STA 0+68.48, 0.5' RT
SEWER STA 0+299.0 BK
SEWER STA 0+600.0 AED

SAN MH #2
STA 0+90.73, 32.3' RT
SEWER STA 3+13.1 BK
SEWER STA 0+600.0 AED

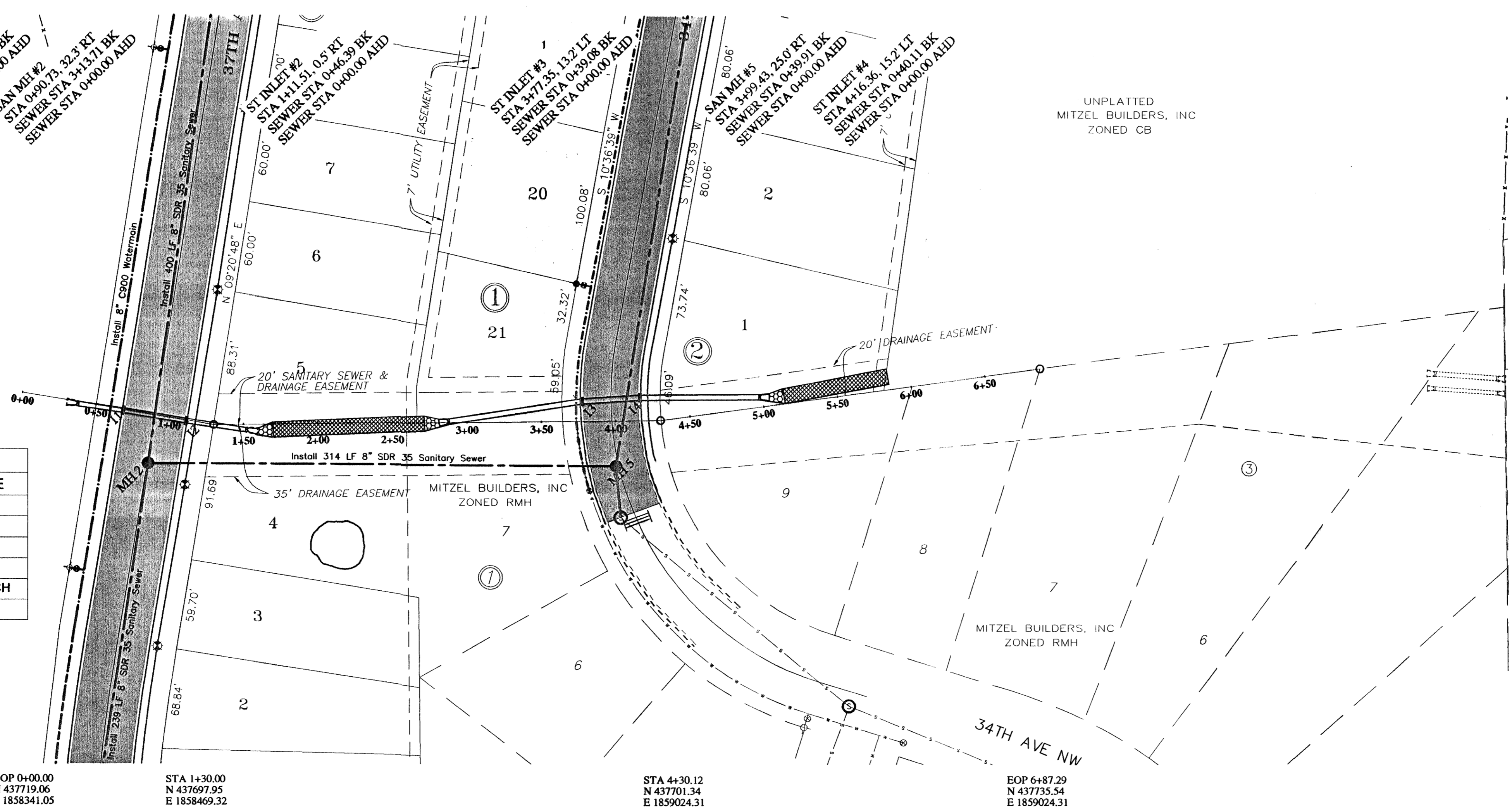
ST INLET #2
STA 1+11.51, 0.5' RT
SEWER STA 0+463.39 BK
SEWER STA 0+600.0 AED

ST INLET #3
STA 3+77.35, 13.2' LT
SEWER STA 0+39.98 BK
SEWER STA 0+600.0 AED

SAN MH #5
STA 3+99.43, 25.0' RT
SEWER STA 0+299.0 BK
SEWER STA 0+600.0 AED

ST INLET #4
STA 4+16.36, 13.2' LT
SEWER STA 0+463.39 BK
SEWER STA 0+600.0 AED

UNPLATTED
MITZEL BUILDERS, INC
ZONED CB



STORM SEWER SCHEDULE		
LOCATION	LENGTH	PIPE SIZE
FES TO INLET #1	30 LF	36"
INLET #1 TO INLET #2	43 LF	36"
INLET #2 TO FES	40 LF	36"
FES TO INLET #3	90 LF	42"
INLET #3 TO INLET #4	39 LF	31"x51" ARCH
INLET #4 TO FES	80 LF	42"

CONSTRUCTION NOTES

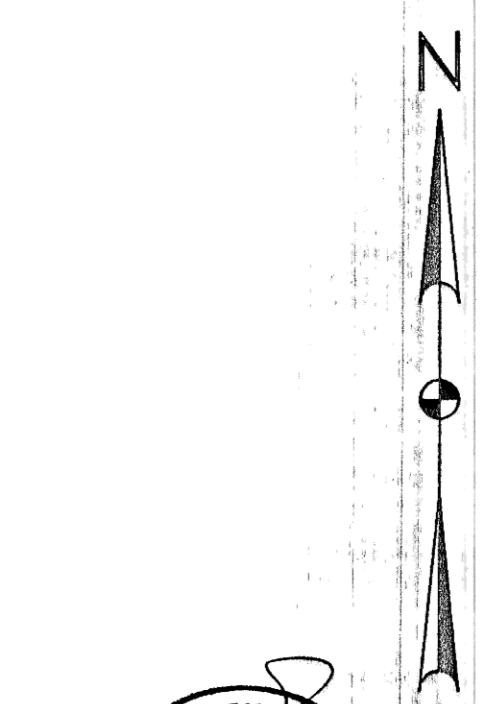
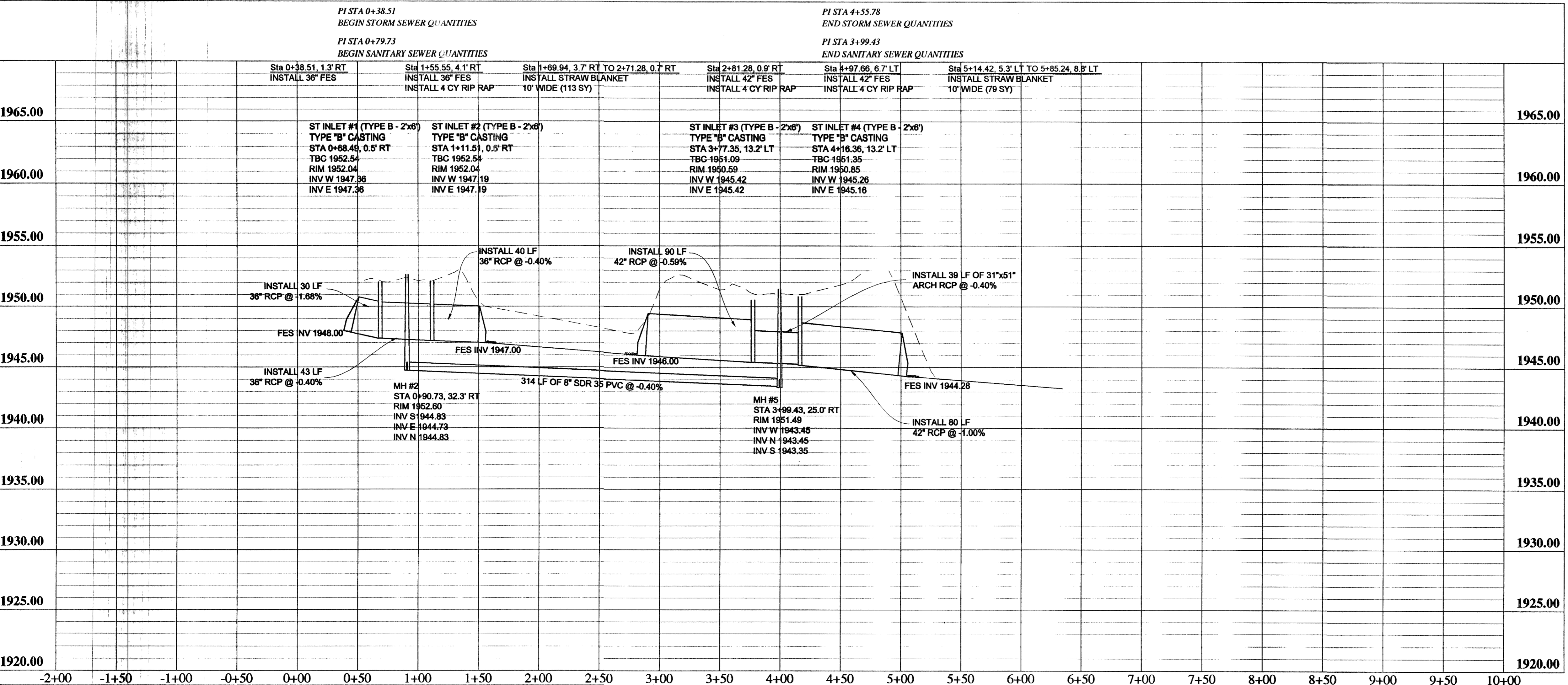
- UTILITY LOCATIONS SHOWN ON THE PLANS ARE APPROXIMATE. THE CONTRACTOR SHALL BE RESPONSIBLE FOR LOCATING ALL UTILITIES PRIOR TO ANY CONSTRUCTION ACTIVITY. THE NORTH DAKOTA "ONE-CALL" NUMBER IS 1-800-795-0555.
- APPROXIMATE TOP OF ROAD SUBGRADE SHALL BE BY OTHERS, PRIOR TO CONSTRUCTION. CONTRACTOR WILL HAVE TO SHAPE SUBGRADE AS REQUIRED TO CONSTRUCT ROADWAYS.
- CONTRACTOR SHALL PROTECT ALL SURVEY MONUMENTS. MONUMENTS SHALL BE LOCATED AND MARKED BY THE OWNER'S REPRESENTATIVE. MONUMENTS DESTROYED OR DESTROYED SHALL BE REPLACED BY THE OWNER'S REPRESENTATIVE AT THE CONTRACTOR'S EXPENSE.
- THE CONTRACTOR SHALL REMOVE AND DISPOSE OF ALL ASPHALT PAVEMENT AND CURB & GUTTER TO A LEGAL OFF SITE LOCATION AS REQUIRED TO MAKE TIE-INS TO THE EXISTING STREETS.
- THE CITY OF MANDAN WILL HIRE AN INDEPENDENT TESTING LABORATORY TO COMPLETE ALL REQUIRED TESTING. SCHEDULING AND COORDINATION OF ALL TESTING WILL BE THE CONTRACTOR'S RESPONSIBILITY.
- WATER AND SEWER ON 34TH AVENUE AND 45TH STREET SHALL BE COMPLETED BY OTHERS PRIOR TO PAVING.

Inlet Number	1	2	3	4
Top of Curb	1952.54	1952.54	1951.09	1951.35
Top P.C. Section	1951.54	1951.54	1950.09	1950.35
Invert Elev. N	-	-	-	-
Invert Elev. E	1947.36	1947.19	1945.42	1945.16
Invert Elev. S	-	-	-	-
Invert Elev. W	1947.36	1947.19	1945.42	1945.26
Length P.C. Section	4.18'	4.35'	4.67'	5.04'

APPROXIMATE QUANTITIES

Storm Sewer Items	Quantity
Pitrun Gravel	185 TON
Subcut Gravel	7 TON
Rock Excavation	3 TON
36" RCP Pipe	113 LF
42" RCP Pipe	170 LF
31" x 51" RCP Arch Pipe	39 LF
36" Flared End Section	2 EA
42" Flared End Section	2 EA
72" Inlet And Type "B" Casting	4 EA
Riprap	12 CY
Coconut Fiber Fabric	192 SY

San. Sewer Items	Quantity
8" Sanitary Sewer Pipe	314 LF
Pitrun Gravel	43 TON
Subcut Gravel	6 TON
Rock Excavation	3 TON



RECORD
DRAWING

Rev'd. MEADOWS 2ND ADDITION STREET IMPROVEMENT DISTRICT NO. 2005-28 MANDAN, NORTH DAKOTA SHEET NO. 9

Kadmas Lee & Jackson
Engineers Surveyors Planners

DRWN. BY: ADA CHKD. BY: BE C.M.P.R. NO. 1406103 DATE: 05/10/06

J:\municipal\1406103 - Meadows Streets\CADD\EP\RCP\EASEMENT.dwg © Kadmas, Lee & Jackson, Inc. 2006