

- CONSTRUCTION NOTES**
- UTILITY LOCATIONS SHOWN ON THE PLANS ARE APPROXIMATE. THE CONTRACTOR SHALL BE RESPONSIBLE FOR LOCATING ALL UTILITIES PRIOR TO ANY CONSTRUCTION ACTIVITY. THE NORTH DAKOTA "ONE-CALL" NUMBER IS 1-800-795-0555.
 - APPROXIMATE TOP OF ROAD SUBGRADE SHALL BE BY OTHERS. PRIOR TO CONSTRUCTION, CONTRACTOR WILL HAVE TO SHAPE SUBGRADE AS REQUIRED TO CONSTRUCT ROADWAYS.
 - CONTRACTOR SHALL PROTECT ALL SURVEY MONUMENTS. MONUMENTS SHALL BE LOCATED AND MARKED BY THE OWNER'S REPRESENTATIVE. MONUMENTS DISTURBED OR DESTROYED SHALL BE REPLACED BY THE OWNER'S REPRESENTATIVE AT THE CONTRACTOR'S EXPENSE.
 - THE CONTRACTOR SHALL REMOVE AND DISPOSE OF ALL ASPHALT PAVEMENT AND CURB & GUTTER TO A LEGAL OFF SITE LOCATION AS REQUIRED TO MAKE TIE-INS TO THE EXISTING STREETS.
 - THE CITY OF MANDAN WILL HIRE AN INDEPENDENT TESTING LABORATORY TO COMPLETE ALL REQUIRED TESTING. SCHEDULING AND COORDINATION OF ALL TESTING WILL BE THE CONTRACTOR'S RESPONSIBILITY.
 - WATER AND SEWER ON 34TH AVENUE AND 45TH STREET SHALL BE COMPLETED BY OTHERS PRIOR TO PAVING.

Manhole Number	5
Costing Elev.	1951.49
Top P.C. Section	1950.45
Invert Elev. N	1943.45
Invert Elev. E	-
Invert Elev. S	1943.35
Invert Elev. W	1943.45
Length P.C. Section	7.00

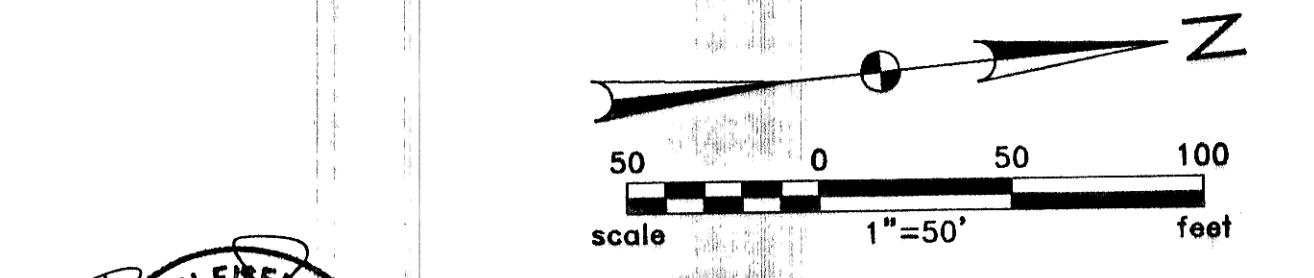
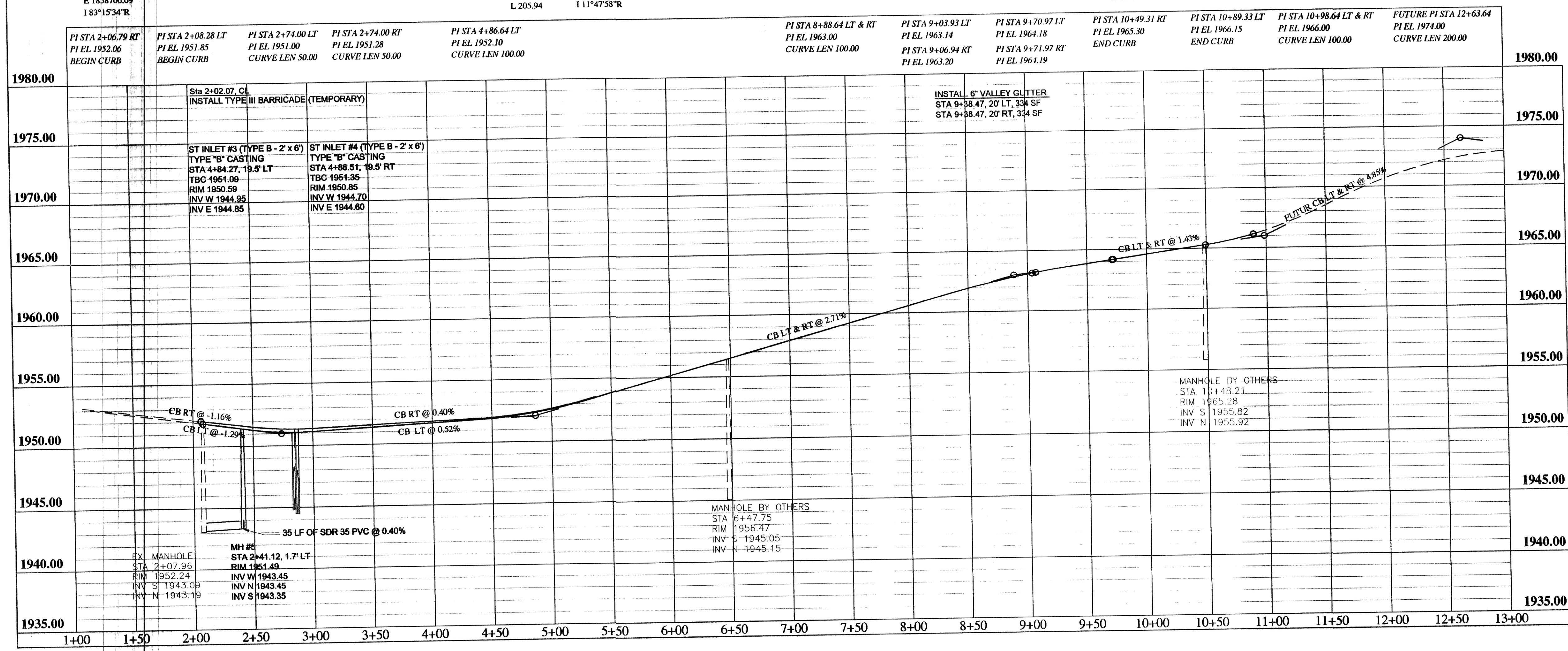
APPROXIMATE QUANTITIES

Paving Items	Quantity
Subgrade Prep	4233 SY
Watering	18 MGal
AC Stabilized Base	506 Ton
Asphalt Cement - Base (PG58-28)	32 Ton
AC Surfacing Course	405 Ton
Asphalt Cement - Surface (PG58-28)	26 Ton
Bituminous Tack Coat	182 Gal
Bituminous Seal Coat	1238 Gal
Cover Aggregate	51 Ton
Blotter Aggregate	2 Ton
Curb and Gutter (Unreinforced)	1631 LF
6" Reinforced Valley Gutter	668 SF
Adjust Manhole	3 EA
Type III Barricade (Temporary)	1 EA

San. Sewer Items

San. Sewer Items	Quantity
8" Sanitary Sewer Pipe	40 LF
Pitrun Gravel	11 TON
Subcut Gravel	1 TON
Rock Excavation	3 TON
Concrete Manhole	1 EA

CIRCULAR		CIRCULAR	
Da	PI Sta	Da	PI Sta
05°43'46"	6+82.99	05°43'46"	11+88.62
T 103.33	N 438106.53	T 247.60	N 438574.65
R 1000.00	E 1858805.59	R 1000.00	E 1858998.64
L 205.94	111°47'58"R	L 485.44	127°48'50"R



RECORD DRAWING

Rev'd.	MEADOWS 2ND ADDITION	SHEET NO.	5
	STREET IMPROVEMENT DISTRICT NO. 2005-28		
	MANDAN, NORTH DAKOTA		
Kadmas Lee & Jackson		34TH AVENUE PLAN AND PROFILE	
DRN. BY	CHK'D BY	CMPR. NO.	DATE
ADA	BE	1406103	05/10/06
J:\municipal\1406103 - Meadows Streets\CADD\EP\RCP34TH.dwg			
© Kadmas, Lee & Jackson, Inc. 2006			