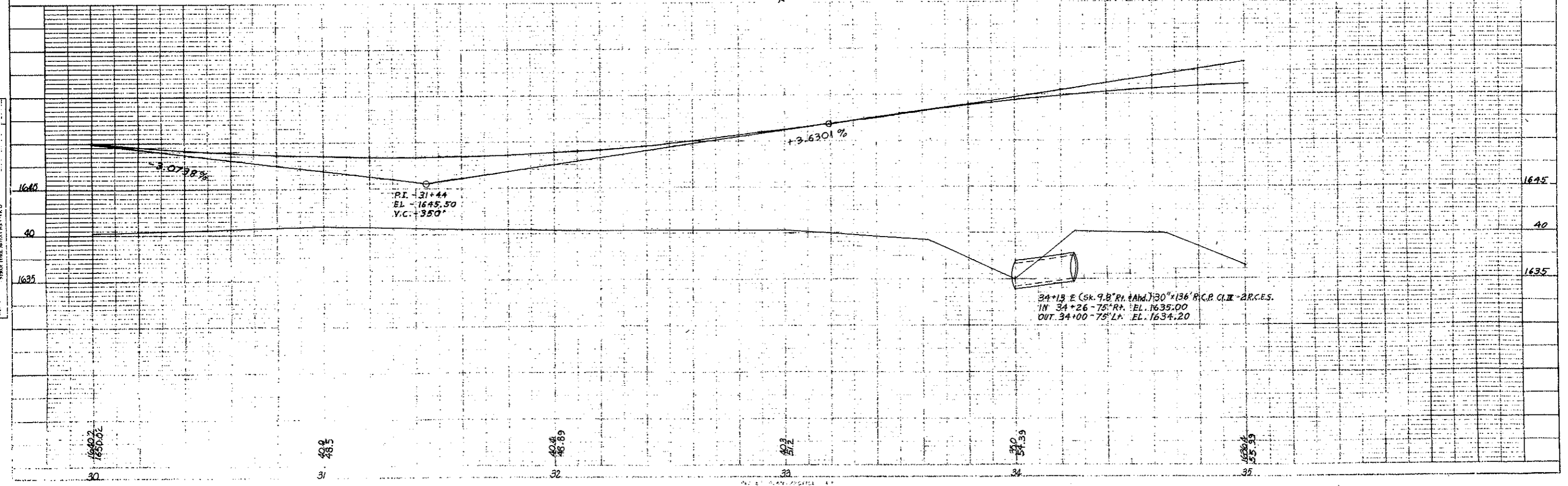
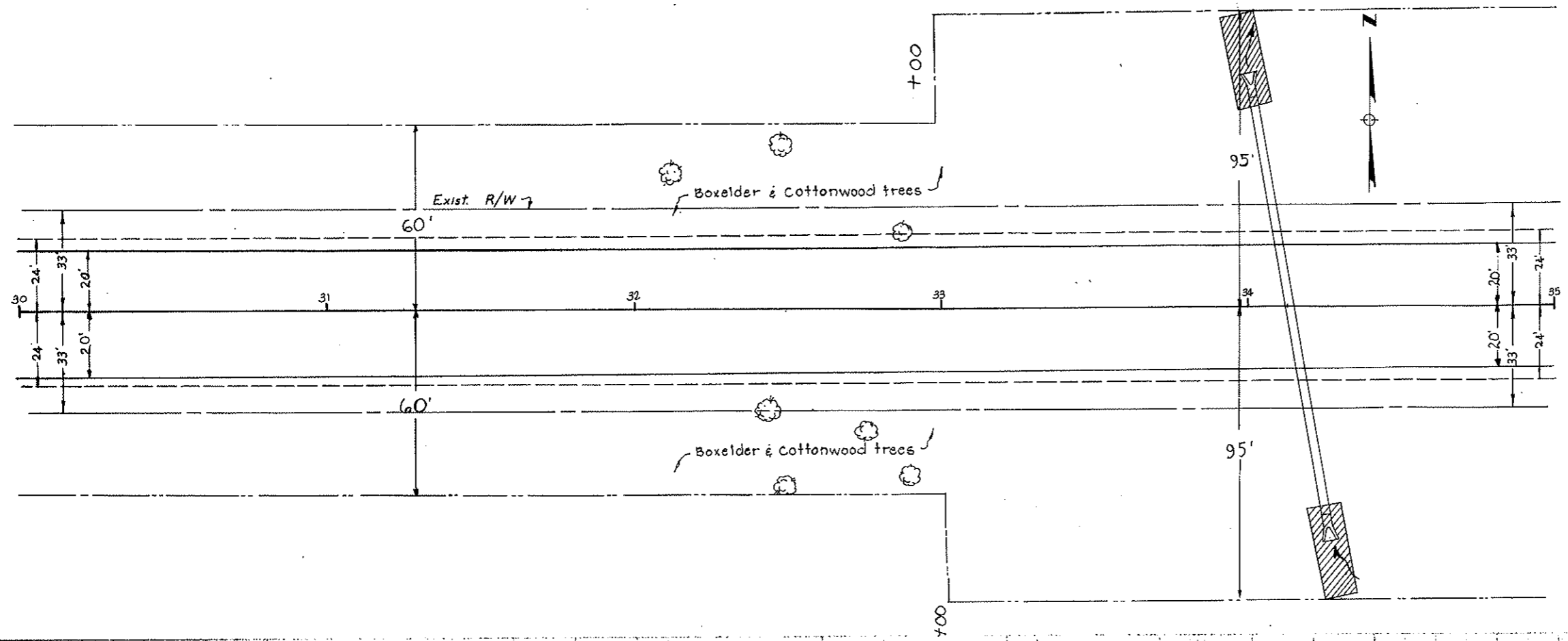


FHWA REGION	STATE	FED. AID PROJ. NO.	SHEET NO.
8	N.D.	M-1-988(02)000	24

INSTALL REINF. CONC. PIPE
 34+13 (Sk. 9.8° Rt. & Ahd.) 30" x 136' R.C.P. CI. III
 - 2 R.C.E.S.

INSTALL SODDING
 34+00 - 75' Lt. 37 S.Y.
 34+26 - 75' Rt. 37 S.Y.



34+13 E (Sk. 9.8° Rt. & Ahd.) 30" x 136' R.C.P. CI. III - 2 R.C.E.S.
 IN 34+26 - 75' Rt. EL. 1635.00
 OUT 34+00 - 75' Lt. EL. 1634.20

NOTE: BANK ALTIMETER CHECKED
 BY: [Name]

U.S. ROAD & BRIDGE ENGINEERS
 1001 W. 10th St., Suite 100
 Bismarck, ND 58102