

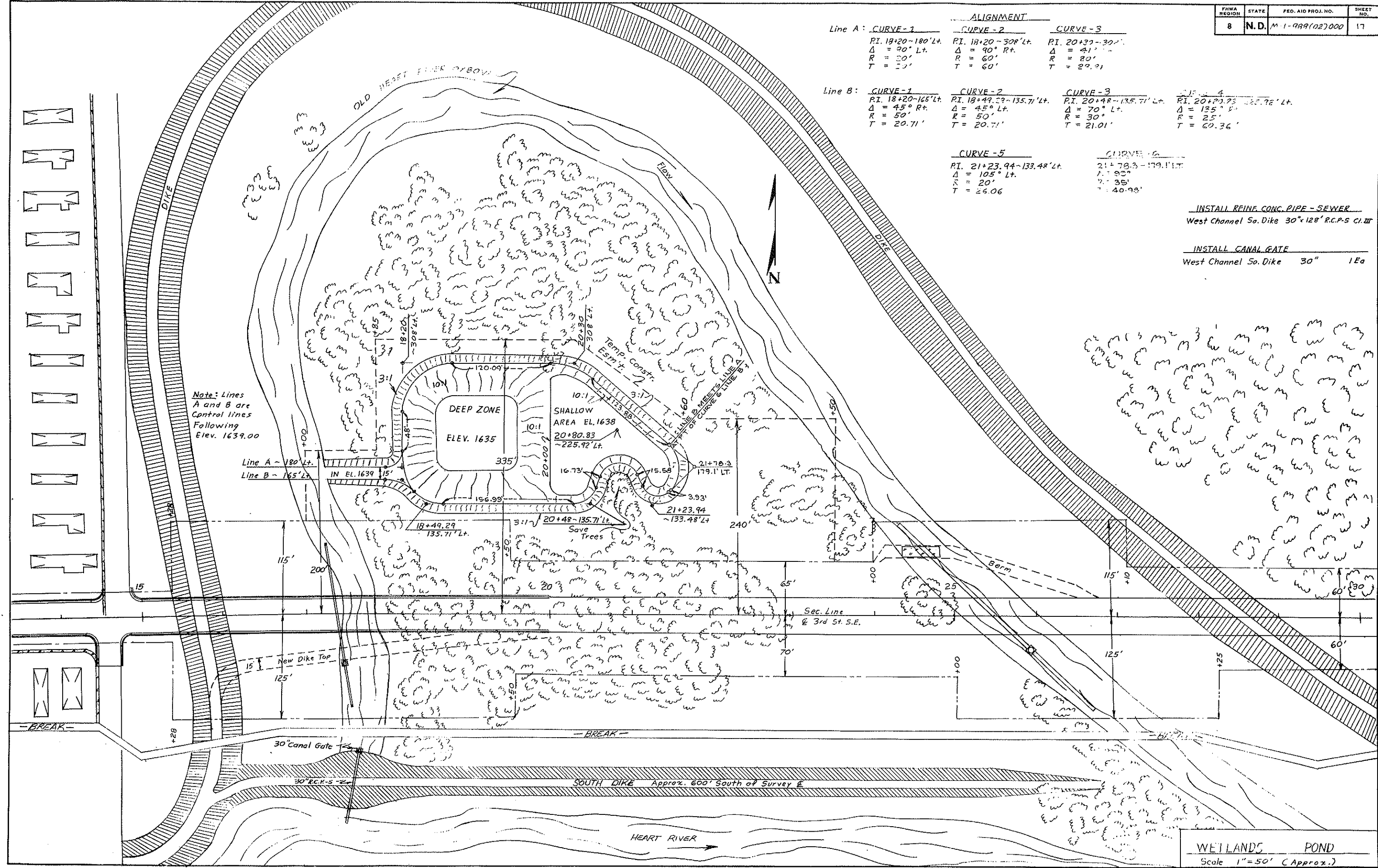
ALIGNMENT			
Line A: CURVE-1	CURVE-2	CURVE-3	
PI. 18+20-180' Lt.	PI. 18+20-308' Lt.	PI. 20+33-302'	
$\Delta = 90^\circ$ Lt.	$\Delta = 90^\circ$ Rt.	$\Delta = 41^\circ$ Lt.	
R = 20'	R = 60'	R = 20'	
T = 20'	T = 60'	T = 29.91'	

Line B: CURVE-1	CURVE-2	CURVE-3	CURVE-4
PI. 18+20-165' Lt.	PI. 18+49.29-135.71' Lt.	PI. 20+48-135.71' Lt.	PI. 20+80.83-225.92' Lt.
$\Delta = 45^\circ$ Rt.	$\Delta = 45^\circ$ Lt.	$\Delta = 70^\circ$ Lt.	$\Delta = 135^\circ$ Lt.
R = 50'	R = 50'	R = 25'	R = 25'
T = 20.71'	T = 20.71'	T = 21.01'	T = 60.36'

CURVE-5	CURVE-6
PI. 21+23.94-133.48' Lt.	PI. 21+78.3-179.1' Lt.
$\Delta = 105^\circ$ Lt.	$\Delta = 90^\circ$
R = 20'	R = 35'
T = 26.06'	T = 40.98'

INSTALL REIN. CONC. PIPE - SEWER
West Channel So. Dike 30" x 128' R.C.P. 5 CI. III

INSTALL CANAL GATE
West Channel So. Dike 30" x 1Ea



Note: Lines A and B are Control lines Following Elev. 1639.00

Line A - 180' Lt.
Line B - 165' Lt.

SOUTH DIKE Approx. 600' South of Survey E

WETLANDS POND
Scale 1" = 50' (Approx.)