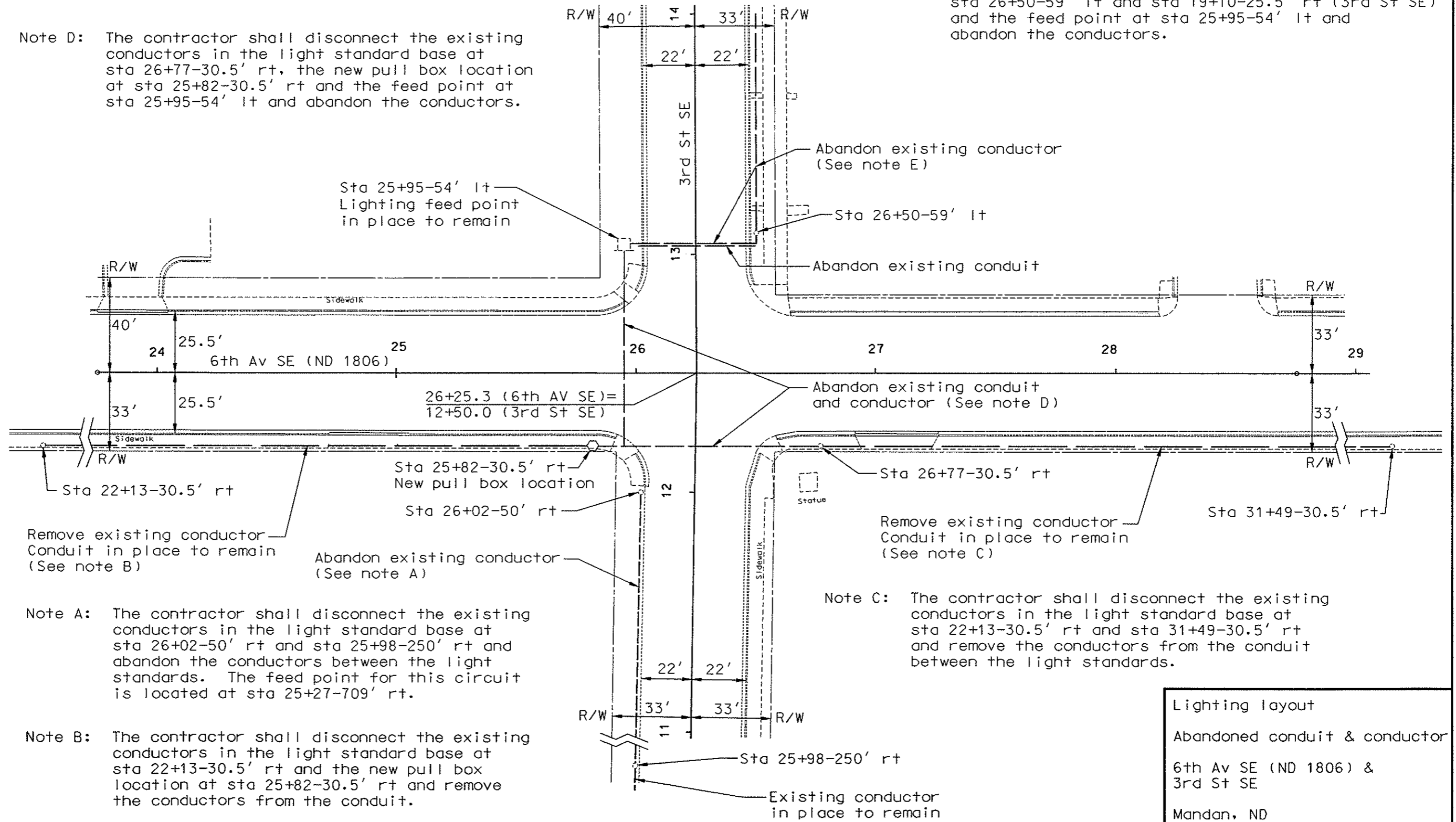


Note D: The contractor shall disconnect the existing conductors in the light standard base at sta 26+77-30.5' rt, the new pull box location at sta 25+82-30.5' rt and the feed point at sta 25+95-54' lt and abandon the conductors.

Note E: The contractor shall disconnect the existing conductors in the light standard base at sta 26+50-59' lt and sta 19+10-25.5' rt (3rd St SE) and the feed point at sta 25+95-54' lt and abandon the conductors.



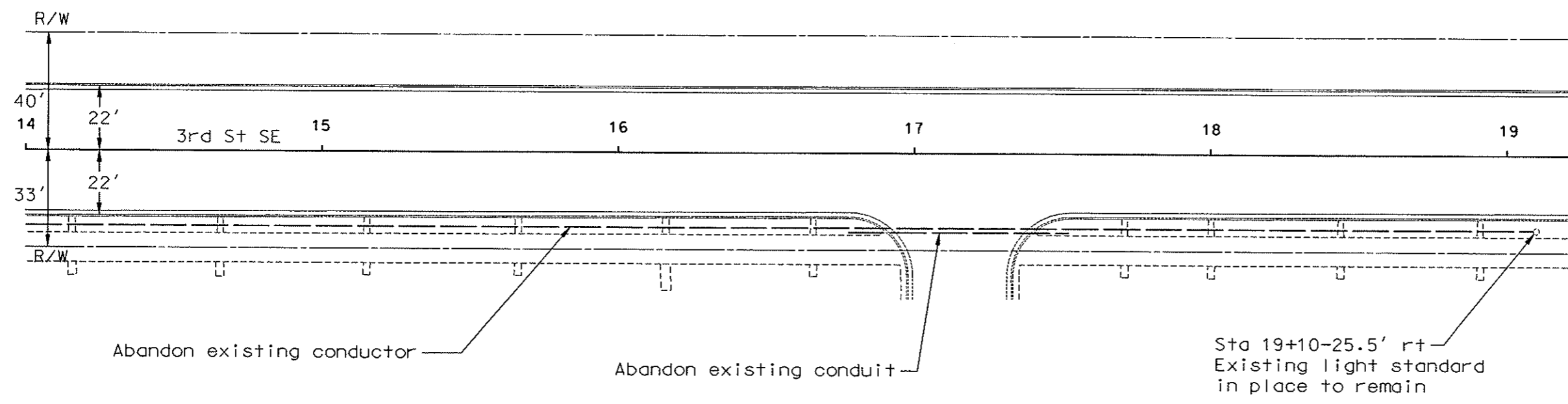
Note A: The contractor shall disconnect the existing conductors in the light standard base at sta 26+02-50' rt and sta 25+98-250' rt and abandon the conductors between the light standards. The feed point for this circuit is located at sta 25+27-709' rt.

Note C: The contractor shall disconnect the existing conductors in the light standard base at sta 22+13-30.5' rt and sta 31+49-30.5' rt and remove the conductors from the conduit between the light standards.

Note B: The contractor shall disconnect the existing conductors in the light standard base at sta 22+13-30.5' rt and the new pull box location at sta 25+82-30.5' rt and remove the conductors from the conduit.

Lighting layout
 Abandoned conduit & conductor
 6th Av SE (ND 1806) & 3rd St SE
 Mandan, ND

FHWA REGION	STATE	PROJECT NO.	SHEET NO.
8	ND	HEU-1-806(032)069	28



Lighting layout
 Abandoned conduit & conductor
 6th Av SE (ND 1806) &
 3rd St SE
 Mandan, ND