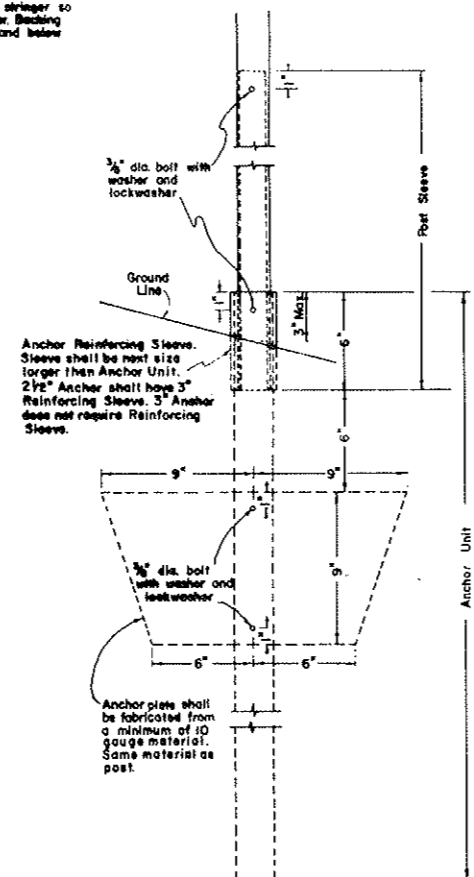
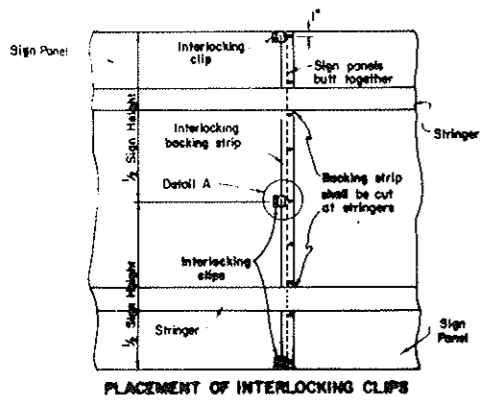
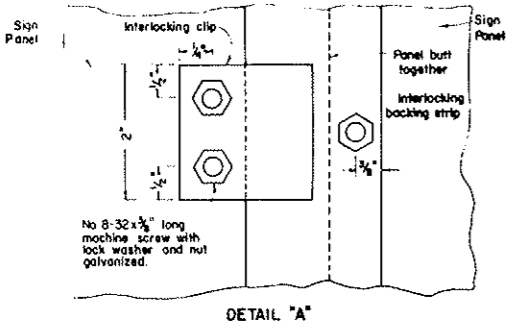
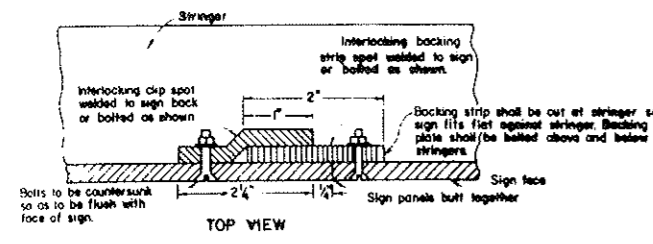


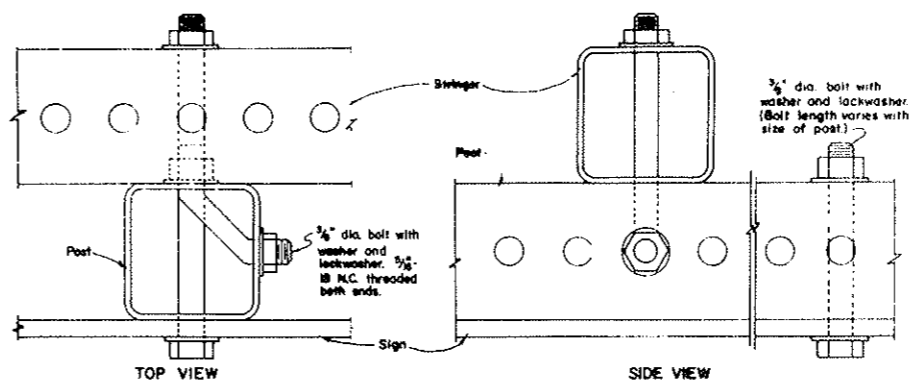
MOUNTING DETAILS

Flat Sheet Signs
Perforated Telescoping Tubes

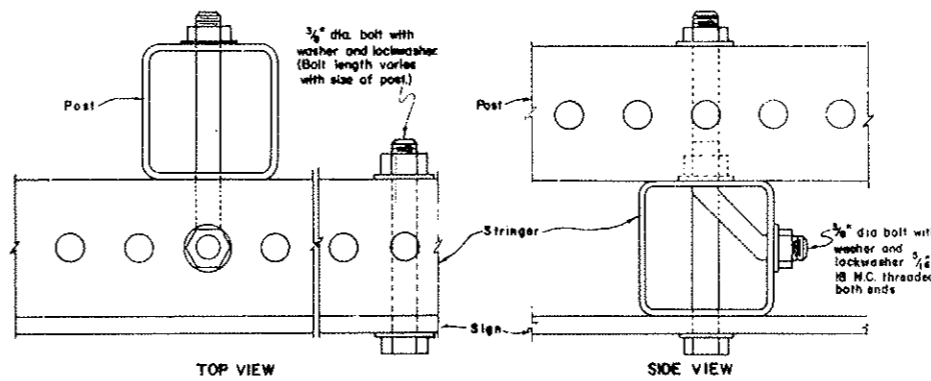


ANCHOR UNIT AND POST SLEEVE ASSEMBLY (showing anchor plate to be used for all 2 post installations)

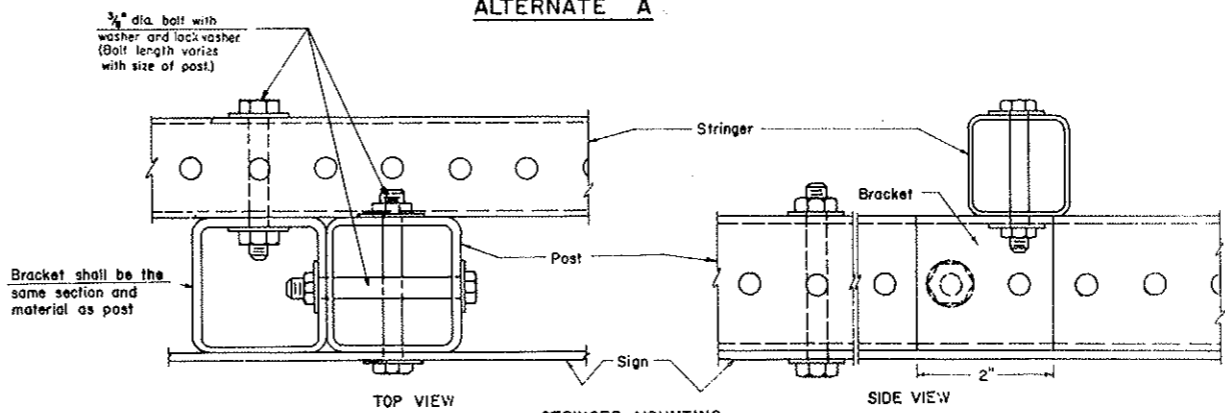
NOTE: Sign may be made in increments or in one complete unit. If made in increments, the interlocking clip shown shall be used. Anchor Unit shall be driven.



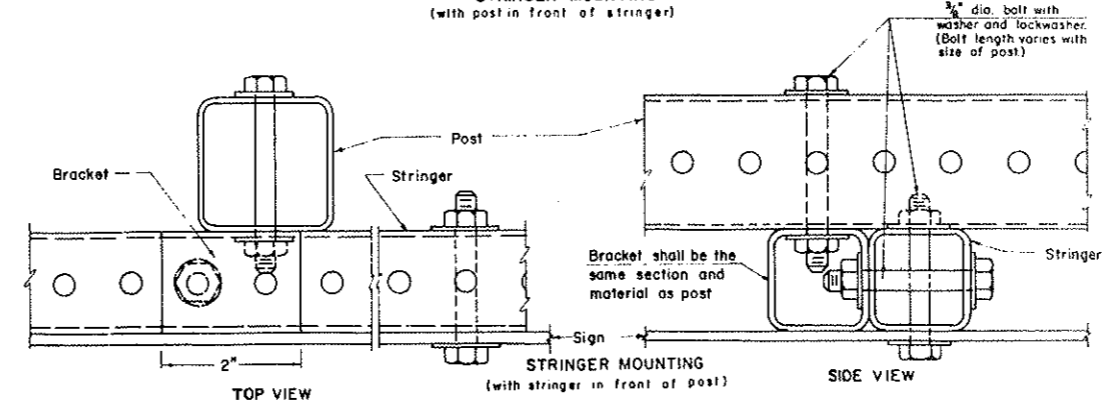
STRINGER MOUNTING (with post in front of stringer)



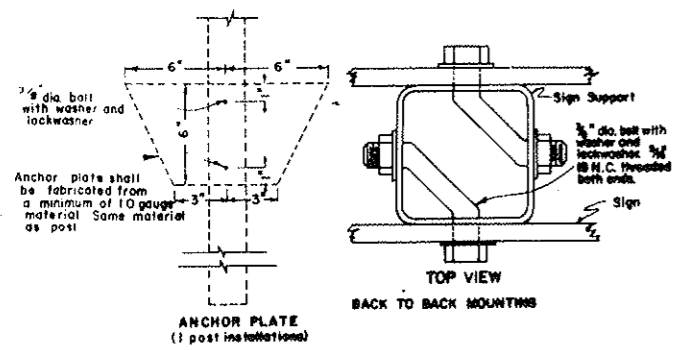
STRINGER MOUNTING (with stringer in front of post) ALTERNATE A



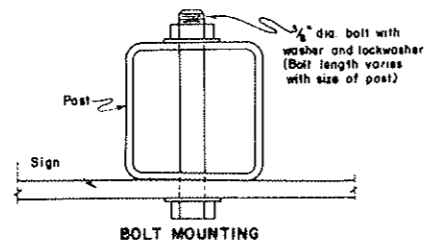
STRINGER MOUNTING (with post in front of stringer)



STRINGER MOUNTING (with stringer in front of post) ALTERNATE B



ANCHOR PLATE (1 post installations)



BOLT MOUNTING

TOP VIEW BACK TO BACK MOUNTINGS

NO PARKING SIGNS: ALL NO PARKING SIGNS THAT HAVE DIRECTIONAL ARROWS PLACED ON THEIR FACES SHALL BE PLACED AT 30 TO 45 DEGREE ANGLE WITH ONCOMING TRAFFIC.

TELESCOPING PERFORATED TUBES							
TUBE SIZE IN.	WALL THICKNESS IN.	U.S. STANDARD GAUGE	WEIGHT PER FOOT LBS.	MOMENT OF INERTIA IN ⁴	CROSS SECT AREA IN. SQ.	SECTION MODULUS IN ³	
1 x 1	.105	12	1.070	.026	2.10	.082	
1 1/4 x 1 1/4	.105	12	1.427	.070	3.15	.112	
1 1/2 x 1 1/2	.105	12	1.705	.129	3.80	.172	
1 3/4 x 1 3/4	.105	12	2.060	.231	4.85	.264	
2 x 2	.105	12	2.416	.372	5.90	.372	
2 1/4 x 2 1/4	.105	12	2.773	.561	6.95	.499	
2 1/2 x 2 1/2	.105	12	3.141	.804	8.03	.643	
3 x 3	.1875		7.178	2.791	12.109	1.861	

10-19-72		NORTH DAKOTA STATE HIGHWAY DEPARTMENT
REVISIONS		
DATE	CHANGE	Submitted
3-28-78	Table Added	<i>Sheldon J. Hoff</i> Design Engineer
11-16-78	NOTE ADDED	Recommended:
		Asst. Chief Engineer, Pre-Const.
		Approved: <i>Richard J. Hoff</i> Chief Engineer