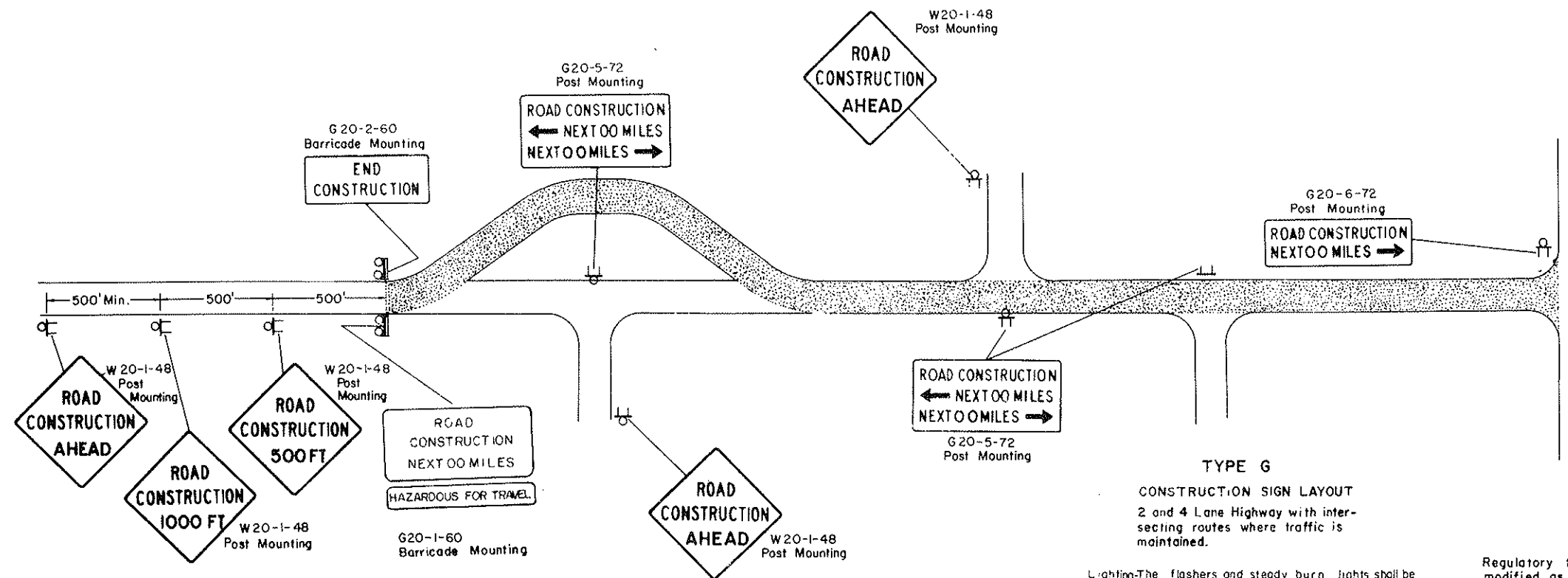


CONSTRUCTION SIGN AND BARRICADE LOCATION DETAILS

FHW REGION	STATE	FED AID PROJ NO	SHEET NO.
8	N.D.	F-1-091(03)	103

D-754-8



TYPE G
CONSTRUCTION SIGN LAYOUT
2 and 4 Lane Highway with intersecting routes where traffic is maintained.

Lighting-The flashers and steady burn lights shall be maintained as shown if danger exists at night or work area is closed to the traffic lane, the edge of the traffic lane on the work area side shall be illuminated by steady burn lights or reflectorized delineators or vertical panels spaced at 100 ft centers. The flashers shall be placed above the barricade bar and above the warning signs.

Mounting-Barricade shown to be placed on roadway shall be on a movable Assembly. Sign to be mounted on barricades shall be mounted with the sign bottom on the top of the top barricade bar. Intermediate Sign shall be on a movable assembly. Sign show to be placed on roadway shall be placed on movable assemblies.

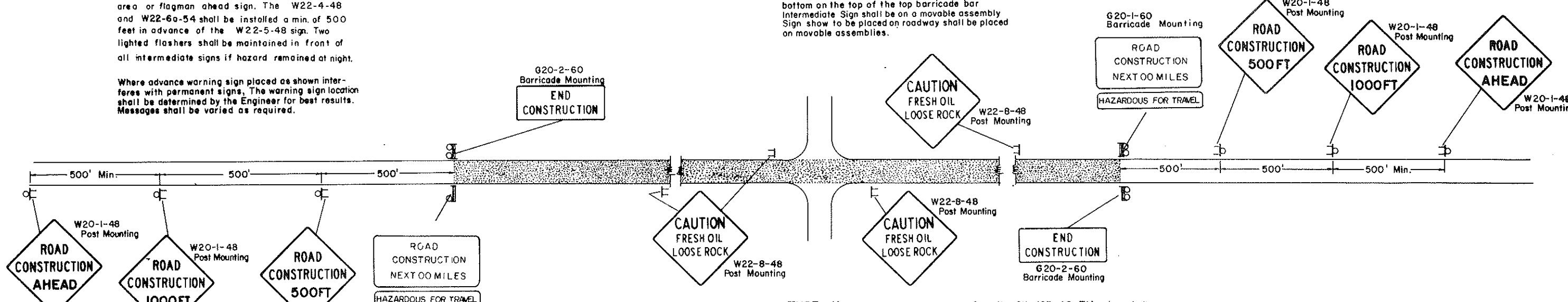
Regulatory traffic control device to be modified as needed for the duration of construction.

FLAGS: All advance warning signs shall have two orange warning flags 24" square mounted perpendicular to the edges of the diamond sign and at such a distance above the edges so that when flag is hung limp it will not touch the sign.

- KEY**
- Type I Barricades
 - Type II Barricades
 - Type III Barricades
 - ▲ Cones
 - Flashers
 - Flagman
 - Delineator Drums
 - Signs
 - Type A Delineator

Note:
Sign No. W22-4-48, W22-5-48, and W22-6a-54 shall be used on all projects where traffic is maintained. These signs shall be moved as work progresses and shall be removed when hazard ceases to exist. The W22-5-48 shall be installed min. of 500 feet in advance of work area or flagman ahead sign. The W22-4-48 and W22-6a-54 shall be installed a min. of 500 feet in advance of the W22-5-48 sign. Two lighted flashers shall be maintained in front of all intermediate signs if hazard remained at night.

Where advance warning sign placed as shown interferes with permanent signs, The warning sign location shall be determined by the Engineer for best results. Messages shall be varied as required.



TYPE H
CONSTRUCTION SIGN LAYOUT
2 and 4 Lane Highway with intersecting routes where traffic is maintained over seal project.

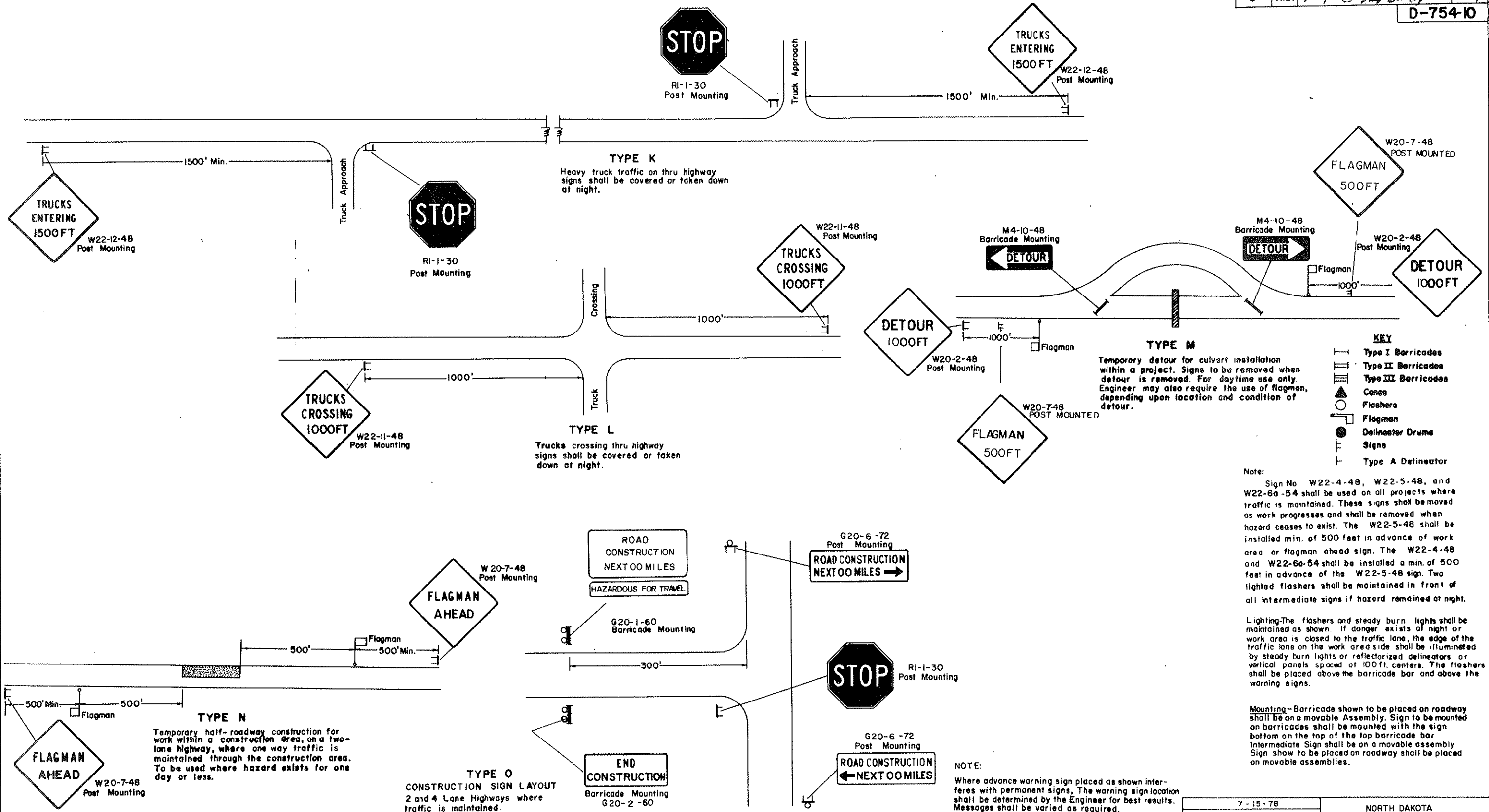
Sign No. CW-103-48. This sign shall be placed 500' past the barricade just after all important intersections and every 5 miles in either direction.

7-15-78		NORTH DAKOTA STATE HIGHWAY DEPARTMENT
REVISIONS		
DATE	CHANGE	Submitted: <i>[Signature]</i> Design Engineer
8-21-78	Note Change	
		Recommended: Asst. Chief Engineer, Pre-Const.
		Approved: <i>[Signature]</i> Chief Engineer

CONSTRUCTION SIGN AND BARRICADE LOCATION DETAILS

FHWA REGION	STATE	FED. AID PROJ. NO.	SHEET NO.
8	N.D.	F-1-094(03)	104

D-754-K



7-15-78	
REVISIONS	
DATE	CHANGE
8-21-78	Note Change

NORTH DAKOTA
STATE HIGHWAY DEPARTMENT

Submitted: *Richard J. Hoff*
Design Engineer

Recommended:
Asst. Chief Engineer, Pra-Const.

Approved: *Richard J. Hoff*
Chief Engineer