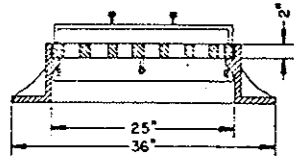
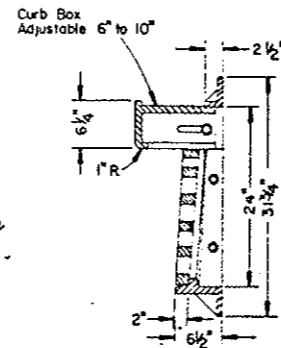
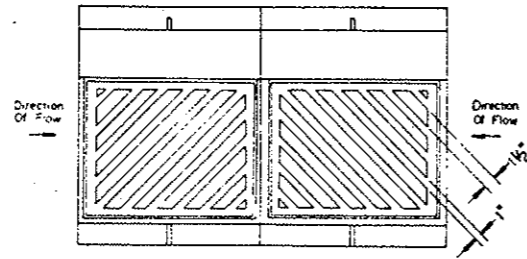
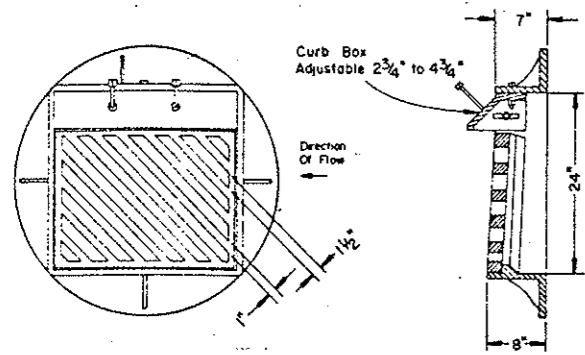


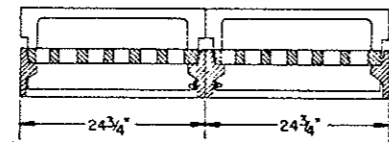
# INLET DETAILS

STATE	RD. AND PROJ. NO.	SHEET
8 N.D.	MG-1-010 (05)	8



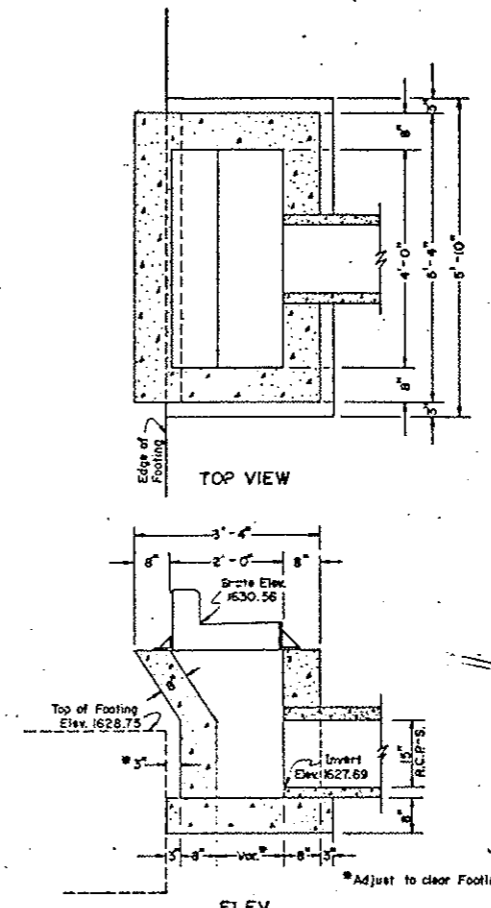
INLET CASTING DETAILS

NOTE: Reversible grates to be furnished

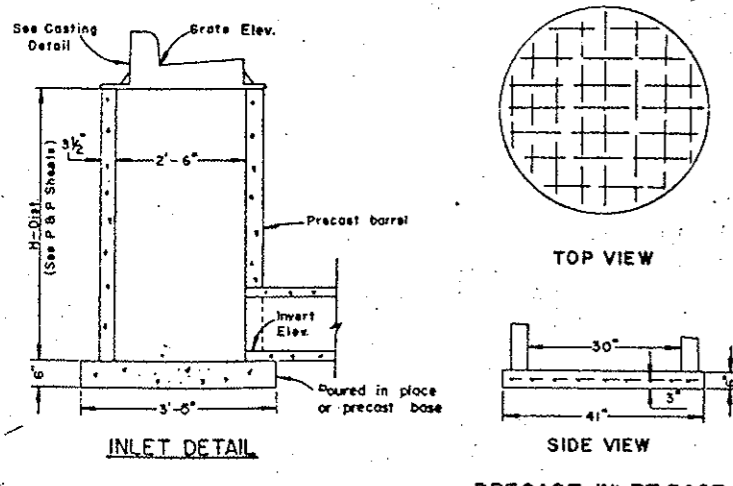
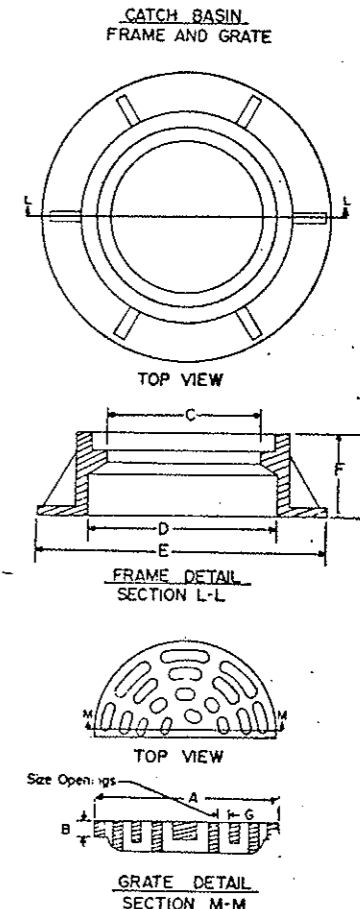


DOUBLE INLET CASTING DETAILS

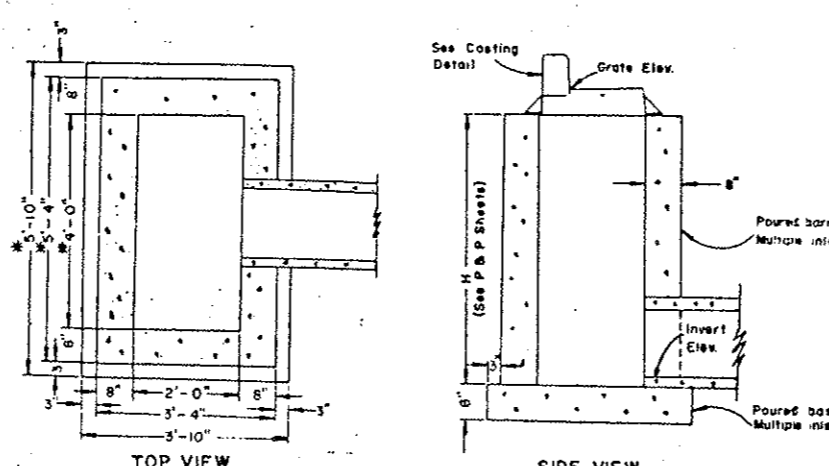
	DIMENSIONS IN INCHES							WEIGHT LBS.
	A	B	C	D	E	F	G	
TYPE A - 24"	22	1 1/2	20	24	33	8	1 1/4	275
TYPE B - 30"	23	1 3/4	20 1/4	26	36	9	1	420



DOUBLE INLET DETAIL  
Sta. 3+30-41.5'Lt.



PRECAST INLET BASE



MULTIPLE INLET DETAIL

\* Dimensions shown for double inlet. Add 2 feet for each additional inlet on multiple installations.

**Notes:**  
 Bottoms of curb inlets shall be cut or precast square to fit the base. Groat joint between base and wall with cement mortar.  
 The Contractor may, if he so desires, construct the curb inlets lower than plan grade and bring the casting to grade using precast adjusting rings in a manner satisfactory to the Engineer in the field.  
 Bolts shall be Temper Finish-Double Heat Treated 1038 S.A.E. Grade 5, with Cad-Dichromate plating.  
 The Contractor may, if he so elects, construct multiple inlet boxes of solid concrete, block, or brick. The materials used shall be approved by the Engineer in writing. The type of construction shall be as specified in Section 714-3 of the Standard Specifications.  
 The Contractor shall have the option of using precast or poured in place bases. Precast bases shall be reinforced with #3 deformed bars at 6" centers in each direction. The class of concrete used in poured bases shall be Class AE.  
 The aggregate size shall be approved by the engineer.  
 Precast barrels shall be constructed in accordance with ASTM 478.  
 Other castings, similar in dimension, may be used if accepted by the engineer in writing.

12-22-75		NORTH DAKOTA STATE HIGHWAY DEPARTMENT
REVISIONS		
DATE	CHANGE	Submitted: <i>Richard J. Hill</i> Design Engineer
		Recommended: <i>W. J. [Signature]</i> Asst. Chief Engineer Pre-Construction
		Approved: <i>W. J. [Signature]</i> Chief Engineer