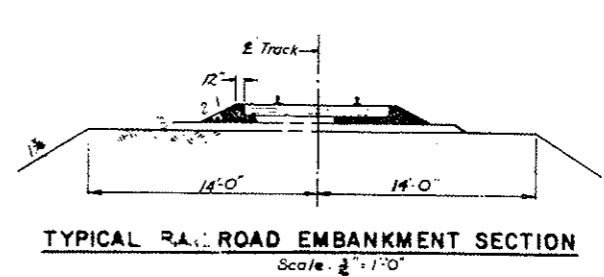
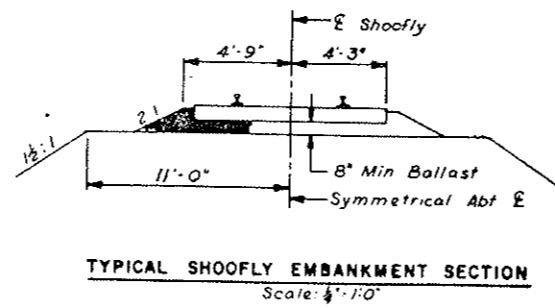
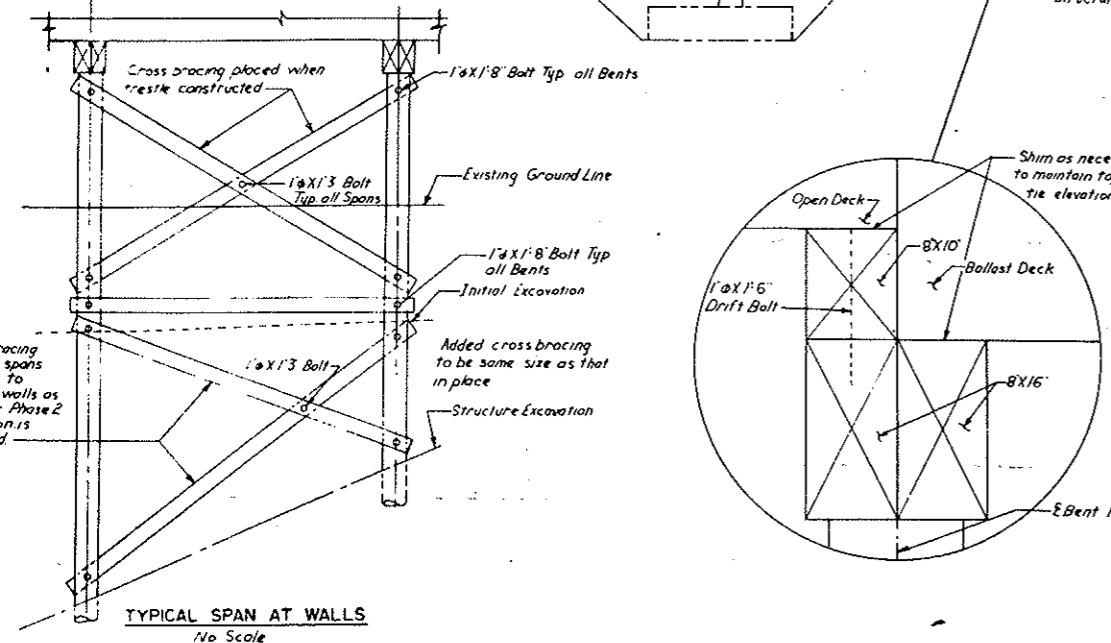
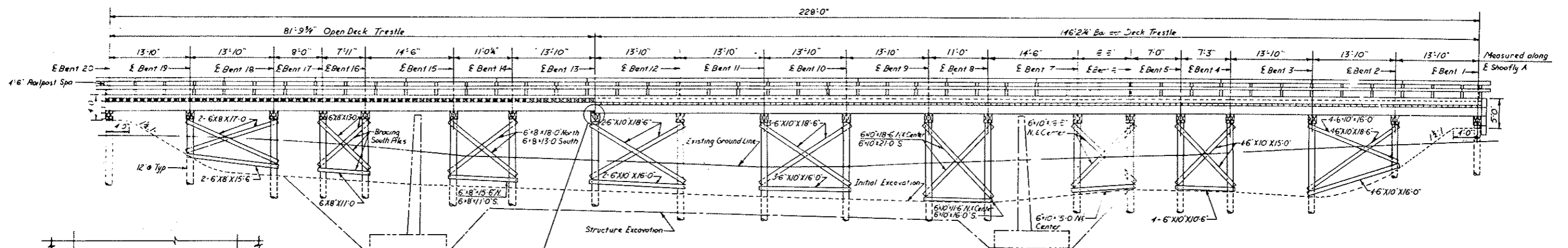
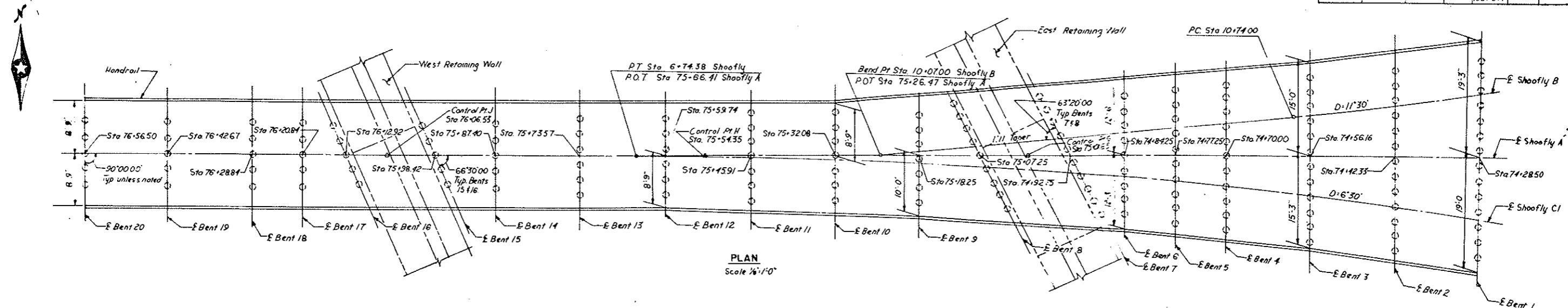


BRIDGE CODE	R.R. BRIDGE NO.	FED. ROAD DIST. NO.	STATE	PROJ. NO.	FISCAL YEAR	SHEET NO.	TOTAL SHEETS
	199	8	N.D.	MG-1-010 (05) 917		2	



Note: Ground Line and Excavation Lines are at Trestle. See Cross Sections for excavation along Bents. For location of longitudinal bracing see "Bent Details-Trestle". Longitudinal bracing may be trimmed in the field if necessary.

QUANTITIES	

**TEMPORARY
TRESTLE LAYOUT
BURLINGTON NORTHERN, INC.
RAILWAY UNDERPASSES**

**U.S. HIGHWAY NO. 10
MORTON COUNTY**