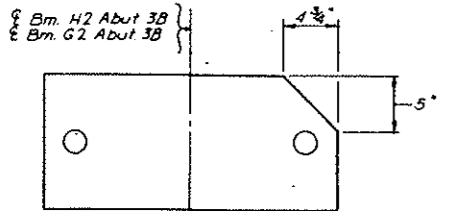
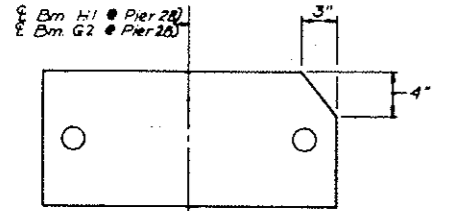


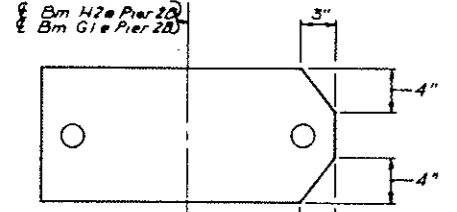
BRIDGE CODE	R.R. BRIDGE NO.	FED ROAD DIST NO.	STATE	PROJ NO	FISCAL YEAR	SHEET NO.	TOTAL SHEETS
	199	8	N.D.	MG-1-010 (05) 917		54	



**MASONRY R**  
(2 Required)



**MASONRY R**  
(2 Required)

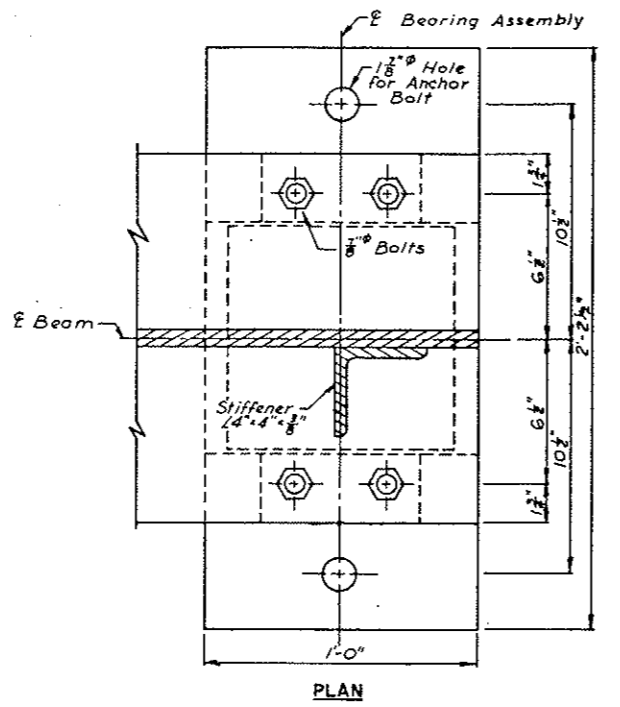


**MASONRY R**  
(2 Required)

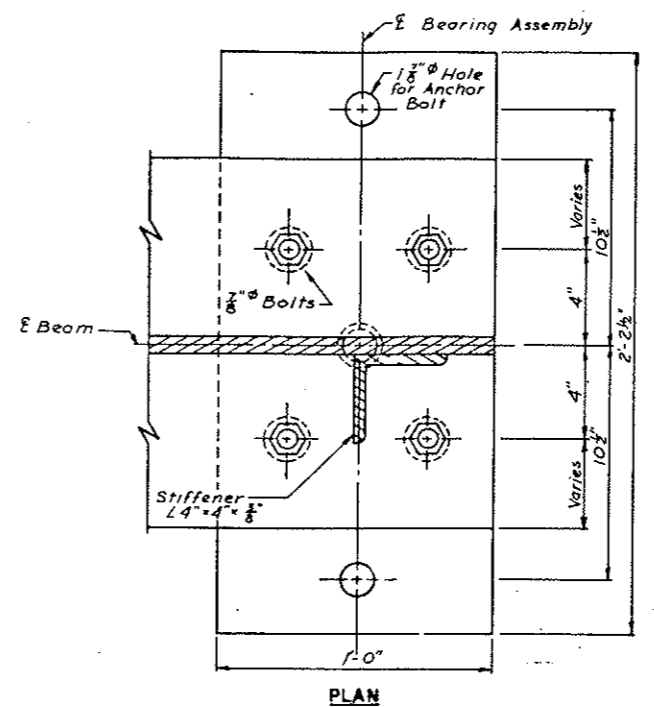
BEARING ASSEMBLIES			
Substructure Unit	Span	Shoe Type	Number
Abut 1A	1	Exp.	5
Pier 2A	1	Fixed	5
	2	Fixed	5
Abut 3A	1	Exp.	5
	2	Exp.	5
Abut 1B	1	Exp.	13
Pier 2B	1	Fixed	13
	2	Fixed	13
Abut 3B	2	Exp.	13

(36 Fixed Required)  
(36 Exp. Required)

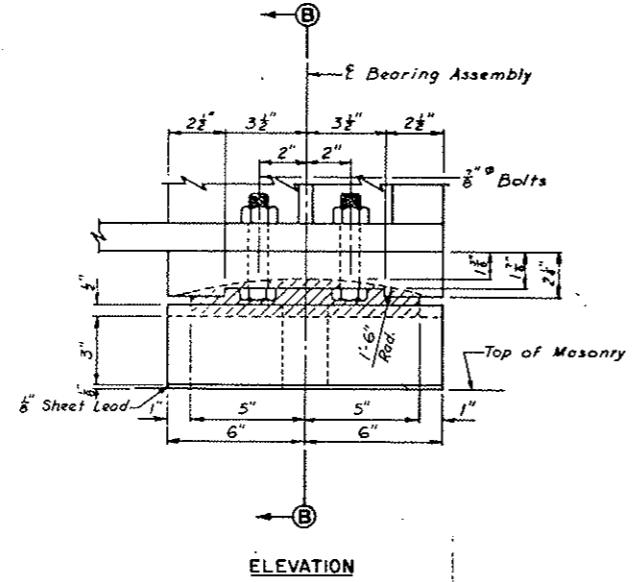
\*See masonry plate details on this sheet for number, location and dimensions of clipped masonry plates.



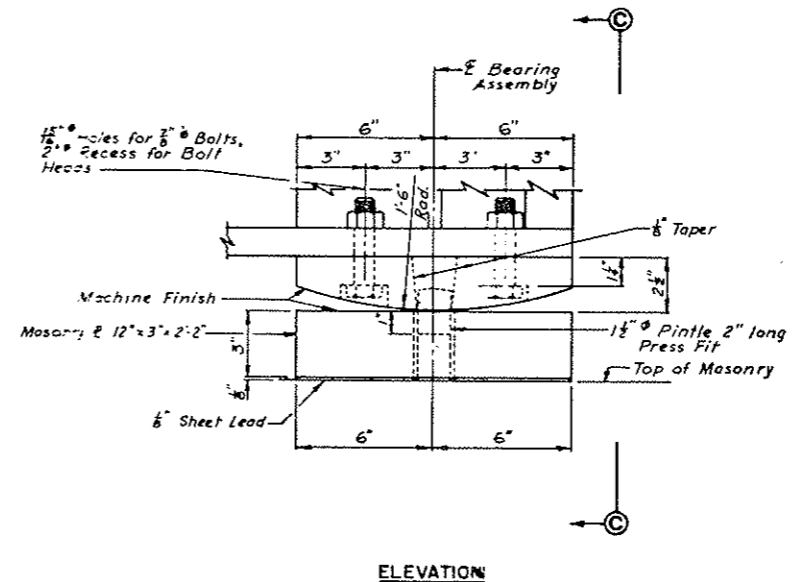
**PLAN**



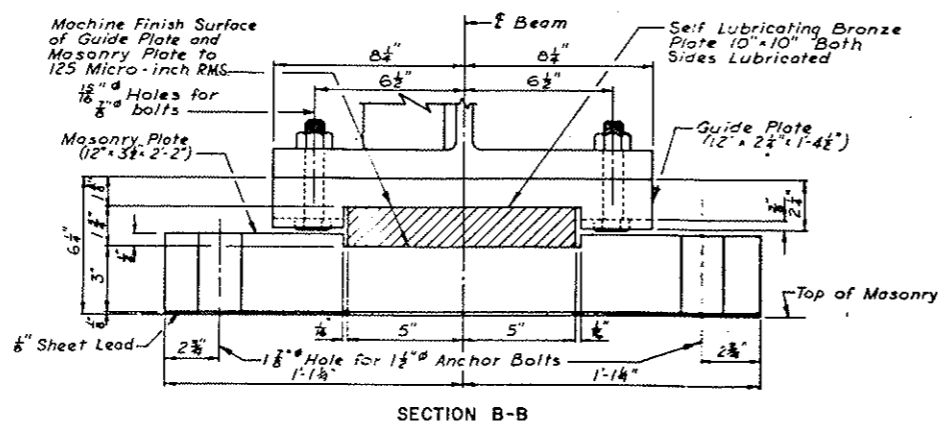
**PLAN**



**ELEVATION**

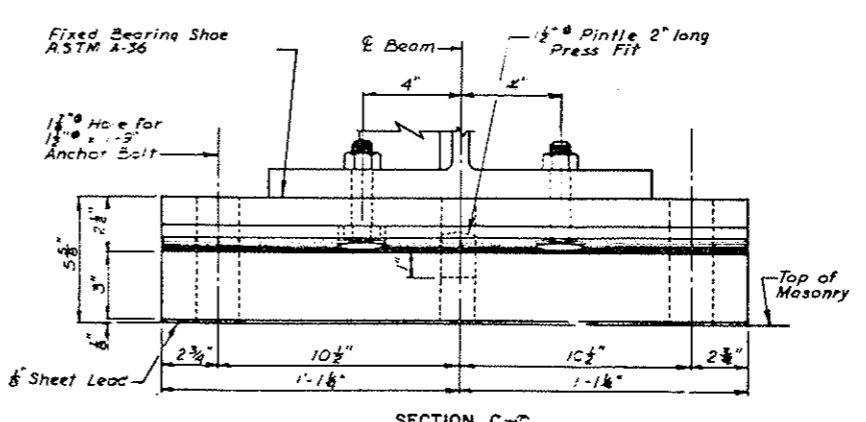


**ELEVATION**



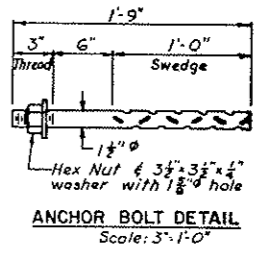
**SECTION B-B**

**EXPANSION BEARING ASSEMBLY DETAIL**  
Scale: 3" = 1'-0"



**SECTION C-C**

**FIXED BEARING ASSEMBLY DETAIL**  
Scale: 3" = 1'-0"



**ANCHOR BOLT DETAIL**  
Scale: 3" = 1'-0"

**Note:**  
All masonry plates and guide plates shall be structural steel, A.S.T.M. Designation A-36.  
Pintles are to be cold finished alloy bar steel A.S.T.M. Designation A331. (Grade AISI A 4140 or 4142)  
Masonry Plates to be bolted to fixed bearing shoes with 1 1/2" bolts for shipment.  
All bearing assemblies including bronze plates and anchor bolts will be included in the weight and paid for as Structural Carbon Steel (Weldable) (A36).  
All bearing assembly steel including bolts and anchor bolts to be galvanized in accordance with A.S.T.M. A123.  
Bearing Assemblies to be adjusted as required so as to be in their normal vertical position at 45° F.  
Drilling and grouting of anchor bolts shall be considered incidental and included in price bid for other items.

QUANTITIES	
Structural Carbon	
Steel (A36)	37,155 lbs.
<b>BEARING ASSEMBLY DETAILS</b>	
<b>BRIDGE A &amp; B</b>	
<b>BURLINGTON NORTHERN, INC.</b>	
<b>RAILWAY UNDERPASSES</b>	
U.S. HIGHWAY NO.10	
MORTON COUNTY	