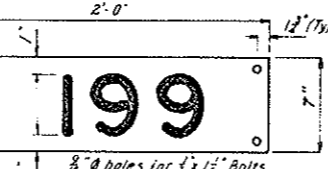
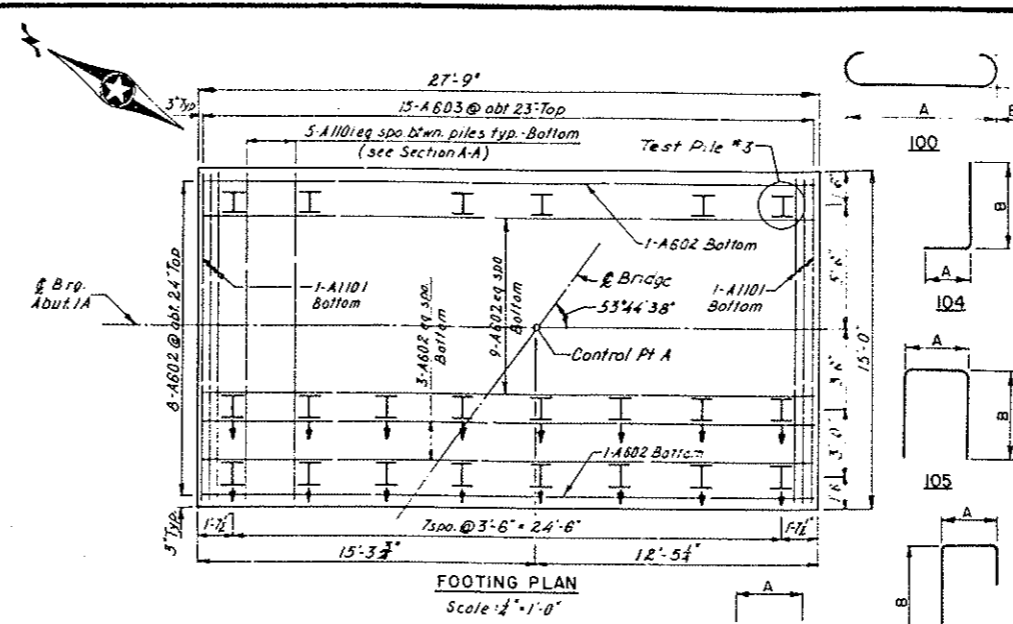
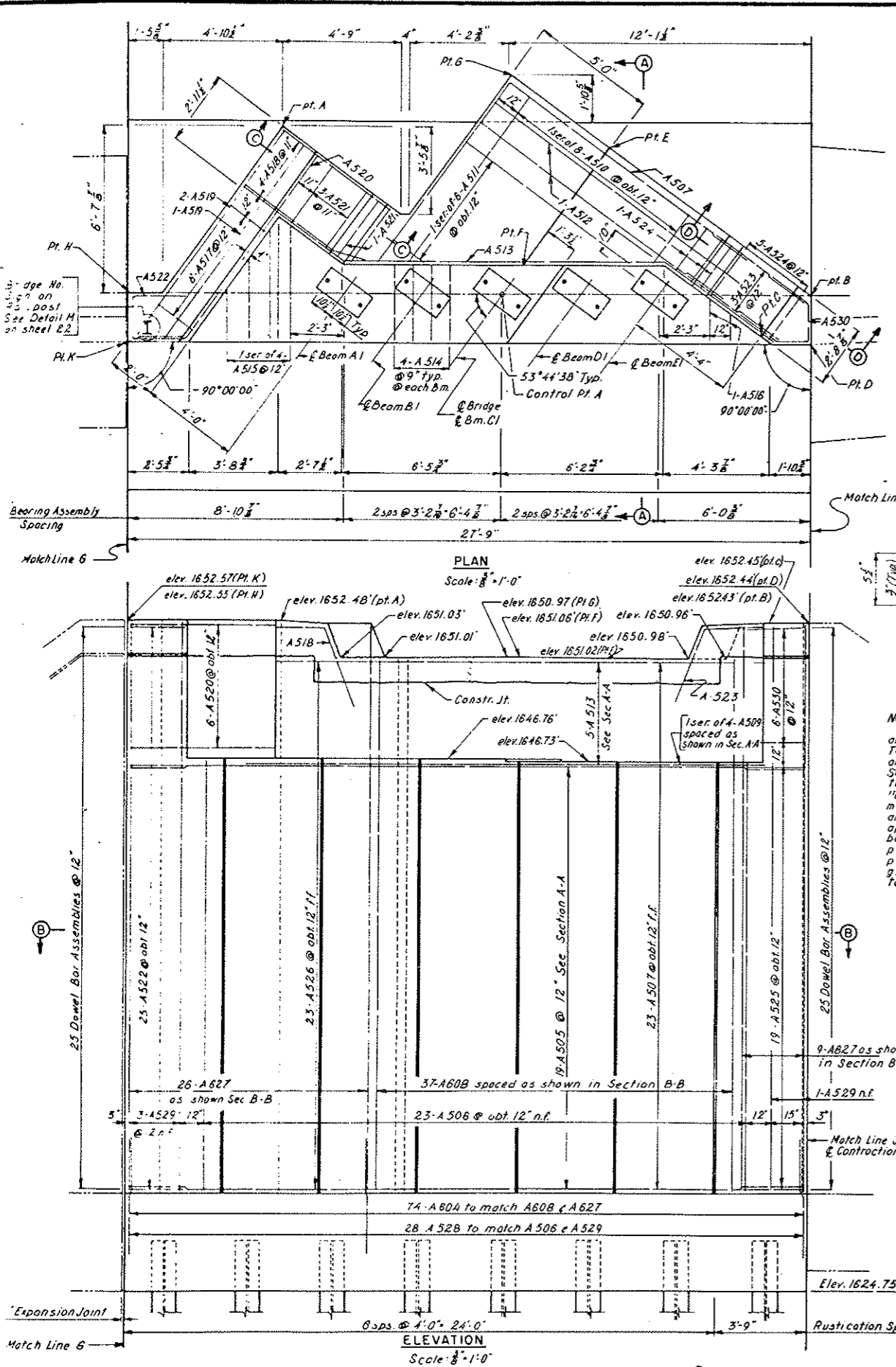


BRIDGE CODE	R.R. BRIDGE NO.	FED. ROAD DIST. NO.	STATE	PROJ. NO.	FISCAL YEAR	SHEET NO.	TOTAL SHEETS
X671	199	8	N D	MS-1-010 (05) 917		20	

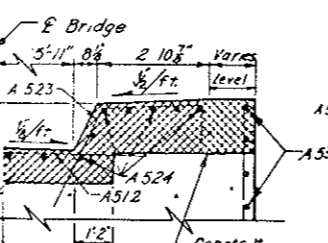
BILL OF REINFORCEMENT - ABUTMENT IA

BAR NO.	NO.	LVS.	LENGTH	TYPE	DIMENSION			LOCATION
					A	B	C	
A1101	41	11	17-8	100	14-6	1-7		Footling
A602	22	6	27-3	Str				Footling
A603	15	6	15-10	100	14-6	8		Footling
A604	74	6	7-0	104	1-0	6-0		Footling
A505	19	5	27-3	Str				Horizontal
A506	23	5	17-6	Str				Vertical
A507	23	5	23-6	104	9-0	14-6		Horizontal
A608	37	6	22-0	Str				Vertical
A509	1 Ser.	5	20-3	Str.				Horizontal
	of 3		25-6					
A510	1 Ser.	5	11-0	113	2-6	6-3		Backwall
	of 8		17-0		8-3	6-3		
A511	1 Ser.	5	1-8	Str.				Backwall
	of 6		8-4					
A512	2	5	12-3	Str.				Backwall
A513	5	5	23-3	138	5-6	12-8	9	Backwall
A514	20	5	7-3	104	2-3	5-0		Pod
A515	1 Ser.	5	6-3	104	2-3	4-0		Pod
	of 4		10-0		2-3	7-9		
A516	2	5	4-9	104	2-3	2-6		Pod
A517	6	5	11-6	113	1-7	7-9		Maskwall
A518	4	5	10-0	144	4-2	2-3	6	Maskwall
A519	3	5	9-9	Str.				Maskwall
A520	6	5	11-9	128	4-9	16		Maskwall
A521	5	5	12-6	113	2-6	7-9		Backwall
A522	25	5	5-8	105	1-8	2-0		Horizontal
A523	3	5	9-3	144	2-1	2-3	6	Backwall
A524	8	5	12-3	113	2-4	7-5		Backwall
A525	19	5	7-0	144	1-10	2-6	9	Backwall
A526	23	5	18-6	104	8-0	10-6		Horizontal
A627	37	6	23-6	Str.				Vertical
A528	28	5	6-9	104	1-0	5-9		Footling
A529	5	5	23-6	Str.				Vertical
A530	6	5	8-6	133	1-6	1-10	9	Horizontal

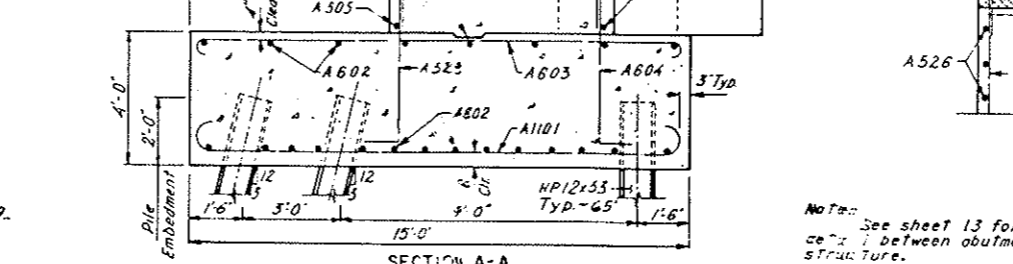


BRIDGE NUMBER SIGN
1 required for Abutment IA
1 required for Abutment 3A

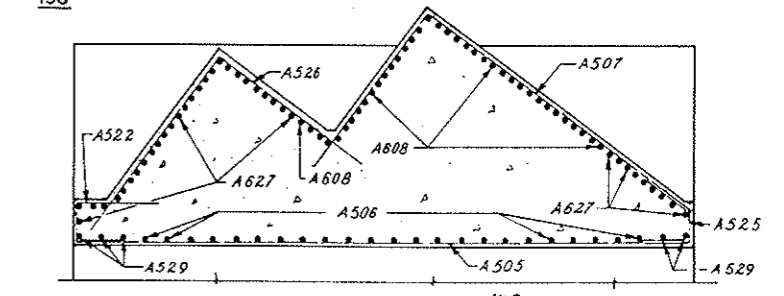
Note: Bridge Number Signs are overlays and shall be made of 0.025" thick 61S-T6 sheet aluminum. After degreasing and treatment of aluminum, apply black Scotchcal No. 655, or approved equal, to face of sign. Then apply 5" Series 10" U.S. Bureau of Public Roads Administration standard numerals of wide angle silver No. 2270 Scotchlite, or approved equal. Sign overlay to be bolted with galvanized or cadmium plated bolts to a No. 7 wrought iron plate of same size, the plate to be given two coats of jet black enamel to both sides.



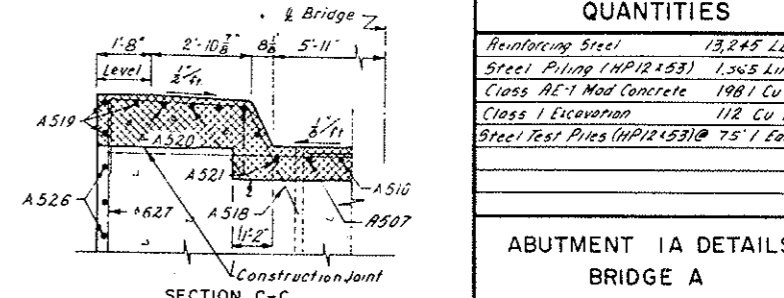
SECTION D-D
Scale: 3/8" = 1'-0"



SECTION A-A
Scale: 1/8" = 1'-0"



SECTION B-B
Scale: 1/4" = 1'-0"



SECTION C-C
Scale: 1/8" = 1'-0"

Note: A527 and A608 bars are to be equally spaced of about 6" along the back faces of the abutment.

QUANTITIES	
Reinforcing Steel	13,245 Lbs
Steel Piling (HP12x53)	1,365 Lin Ft
Class AC-1 Mad Concrete	1981 Cu Yd
Class I Excavation	112 Cu Yd
Steel Test Piles (HP12x53) @ 75' / Each	

ABUTMENT IA DETAILS
BRIDGE A
BURLINGTON NORTHERN, INC.
RAILWAY UNDERPASSES

U.S. HIGHWAY NO. 10
MORTON COUNTY

Note: See sheet 13 for expansion joint details between abutment and superstructure.