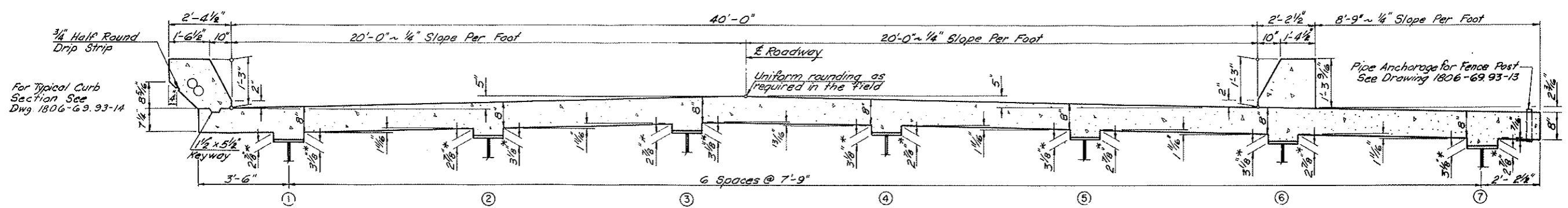
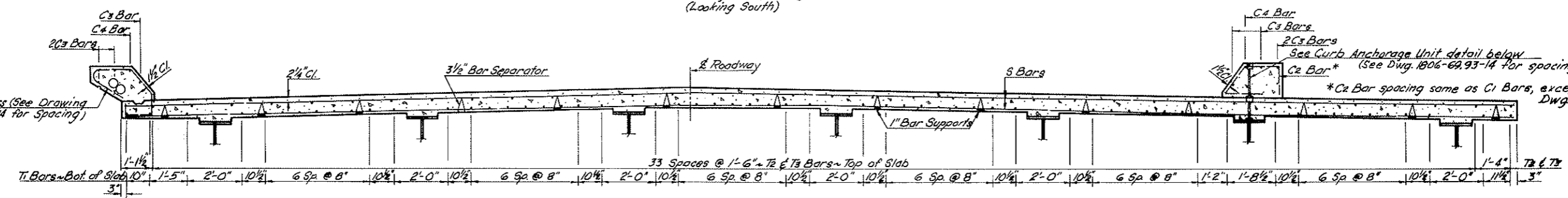


FED. ROAD DIST. NO.	STATE	PROJ. NO.	SHEET NO.	TOTAL SHEETS
6	N. D.	BRS-1-80669069	23	

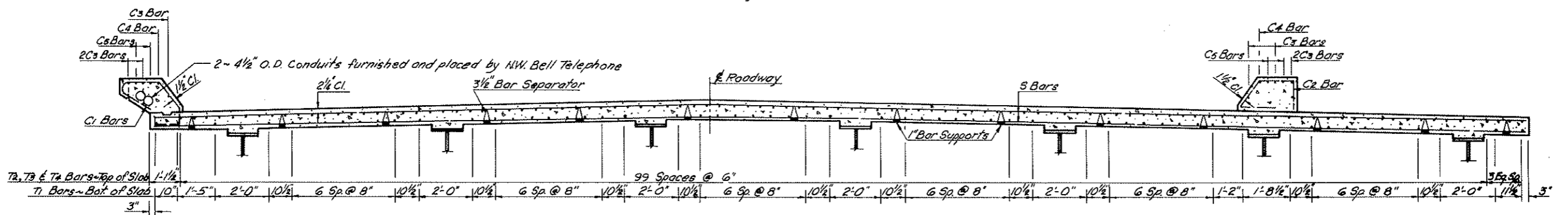


\*Allow for variation in girder elevation by adjusting the riser dimension to maintain required slab thickness.

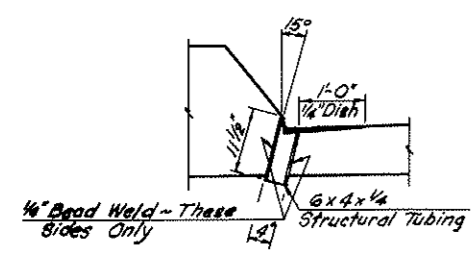
**SECTION OF SLAB**  
Showing Dimensions  
(Looking South)



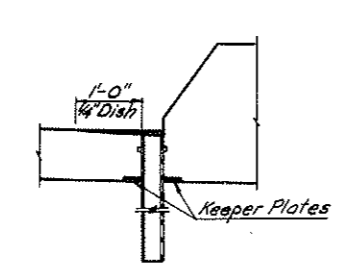
**SECTION OF SLAB**  
Showing Reinforcing Between Supports  
(Looking South)



**SECTION OF SLAB**  
Showing Reinforcing Over Piers  
(Looking South)

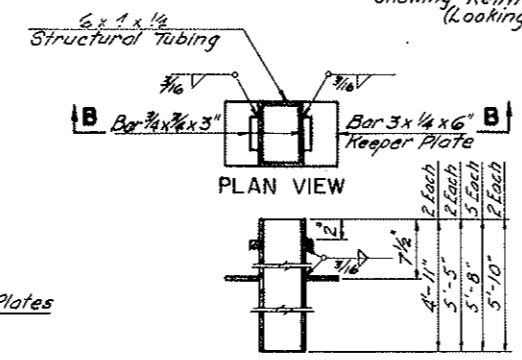


**EAST DRAIN DETAIL**  
11 Required

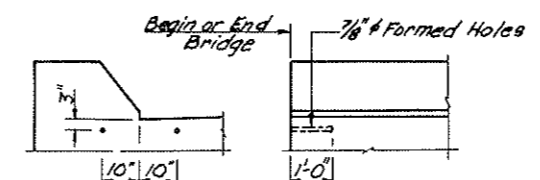


**WEST DRAIN DETAIL**  
11 Required

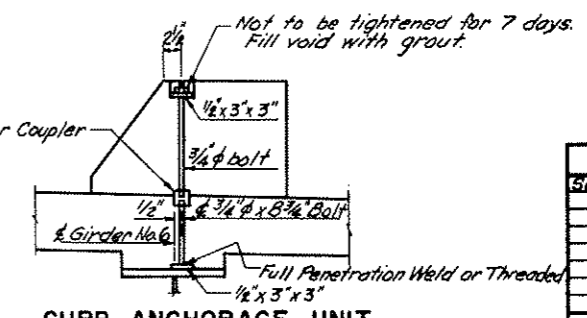
Shall be considered incidental to the pay item of Class AAE-3 Concrete



**B-B DRAIN PIPE DETAIL**  
(West Drains)



**CURB SLEEVE DETAIL**



**CURB ANCHORAGE UNIT**

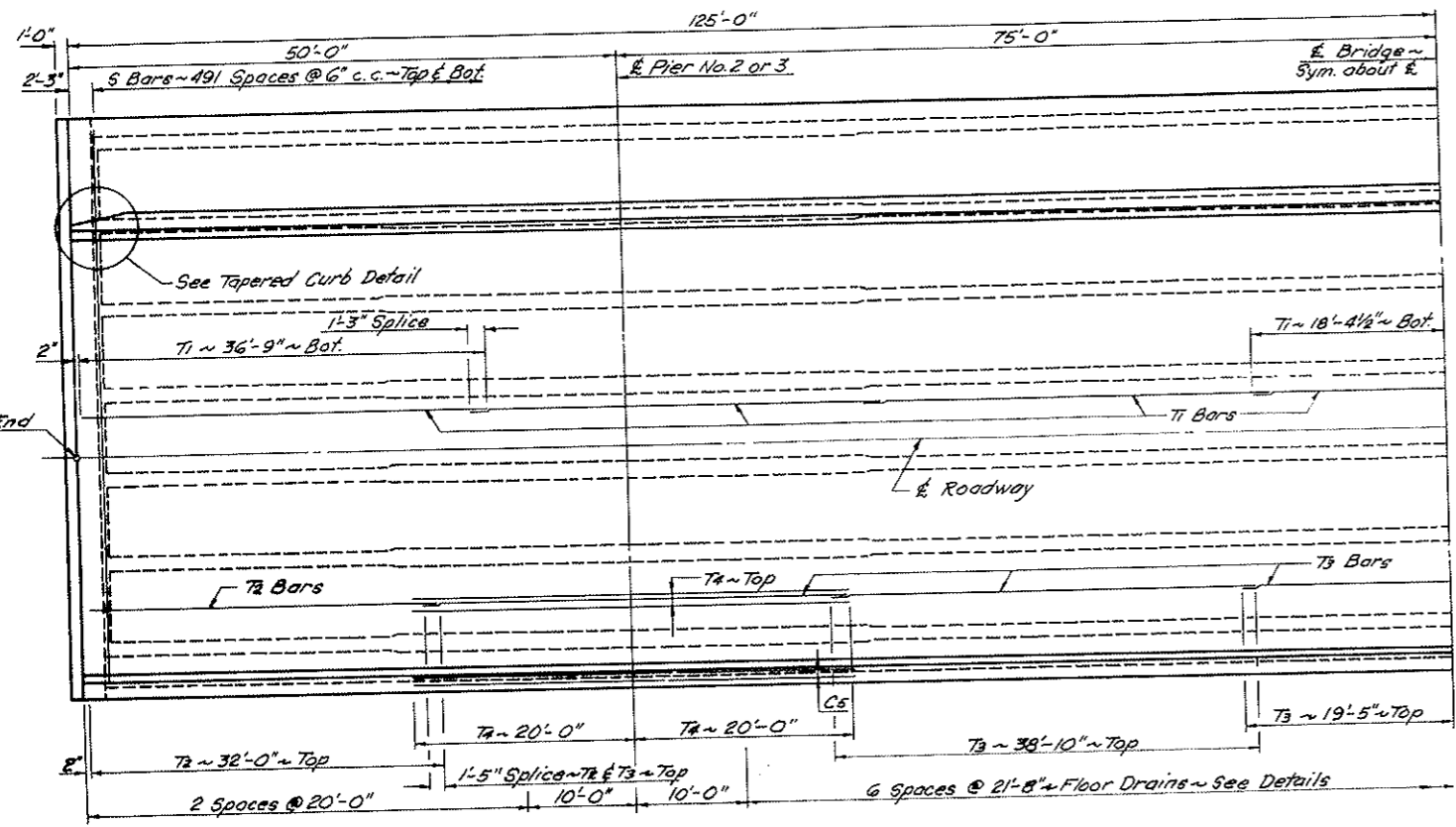
A 3/4" x 8 3/4" bolt attached to a 1/2" x 3" x 3" plate shall be set on the top of the steel girder under the curb adjacent to the sidewalk. The top portion shall be threaded and greased. This will allow the slab to be poured and finished as a full width. After the concrete has been finished, the threads shall be exposed to receive the coupler and additional bolt. The material shall meet A36 strength requirements. Payment will be made under "Structural Steel A36 Welded Girder" and includes the cost of material and placement.

QUANTITIES	
See Drawing 1806-6993-12	

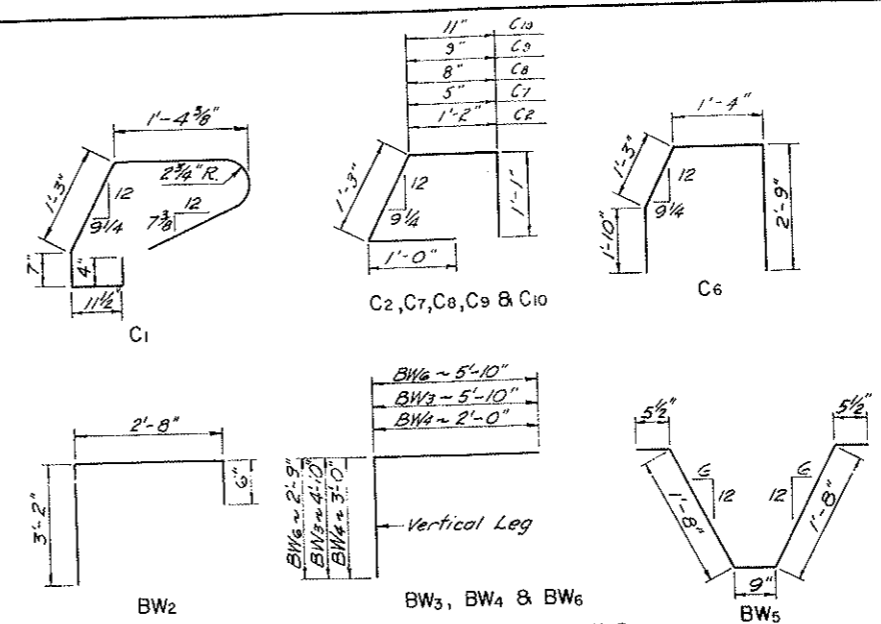
HEART RIVER BRIDGE  
SLAB DETAILS

LEG  
 CHECKED BY  
 MADE BY  
 TRACING  
 QUANTITIES  
 CHECKED BY

FED. ROAD DIST. NO.	STATE	PROJ. NO.	SHEET NO.	TOTAL SHEETS
8	N. D.	BRS-1-806W0069	24	

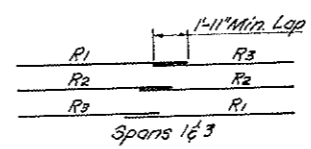


HALF PLAN



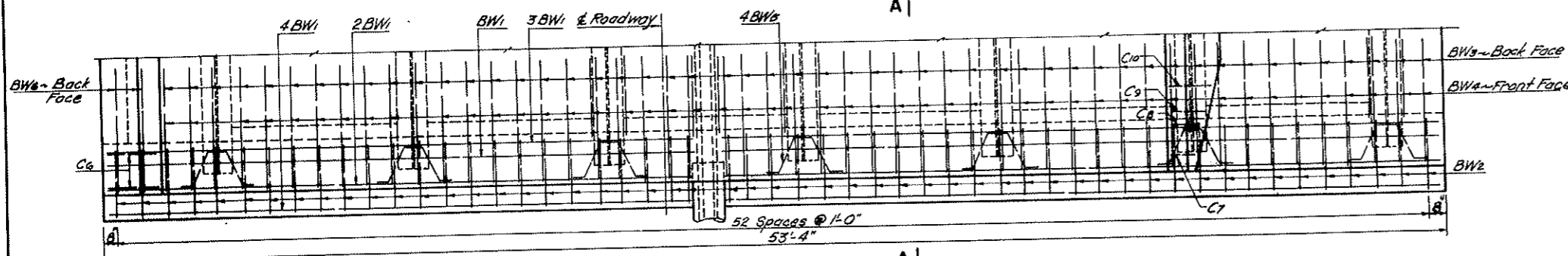
BENT BAR DETAILS

Dimensions shown are out to out

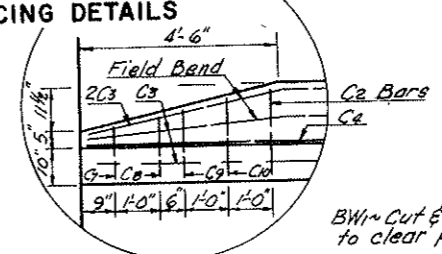


R BAR SPLICING DETAILS

SUPERSTRUCTURE						
MARK	NUMBER	SIZE	LENGTH	SHAPE	UNIT	WT.
BW1	36	4	27'-2"	Str.		
BW2	106	5	6'-4"	Bent		
BW3	102	5	10'-8"	"		
BW4	94	5	5'-0"	"		
BW5	56	5	5'-0"	"		
BW6	4	5	8'-7"	"		
BW7	4	6	27'-6"	Str.		
C1	285	5	5'-9"	Bent		
C2	281	5	4'-6"	"		
C3	63	5	37'-1"	Str.		
C4	14	6	37'-4"	"		
C5	8	6	40'-0"	"		
C6	4	5	7'-2"	Bent		
C7	2	5	3'-9"	"		
P7	174	6	4'-4"	Bent		
P8	18	6	5'-1"	"		
P9	128	5	4'-9"	"		
P10	128	3	4'-2"	"		
P11	116	3	3'-2"	"		
P12	12	3	4'-8"	"		
RC	442	3	3'-3"	Bent		
R1	16	6	26'-4"	Str.		
R2	16	6	23'-4"	"		
R3	16	6	20'-4"	"		
R4	8	6	41'-10"	"		
R5	8	6	38'-10"	"		
R6	8	6	35'-10"	"		
9	984	5	51'-10"	Str.		
T1	413	5	36'-9"	Str.		
T2	70	4	38'-0"	"		
T3	175	4	38'-10"	"		
T4	136	4	40'-0"	"		
C8	2	5	4'-0"	Bent		
C9	2	5	4'-1"	"		
C10	2	5	4'-3"	"		

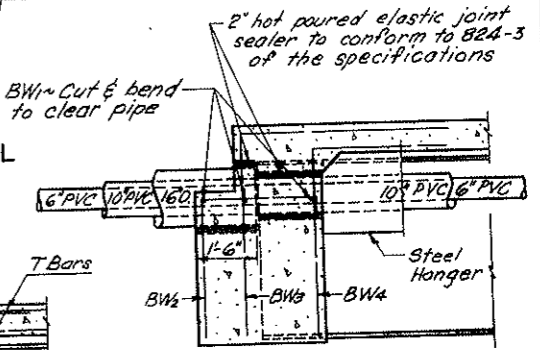


PLAN

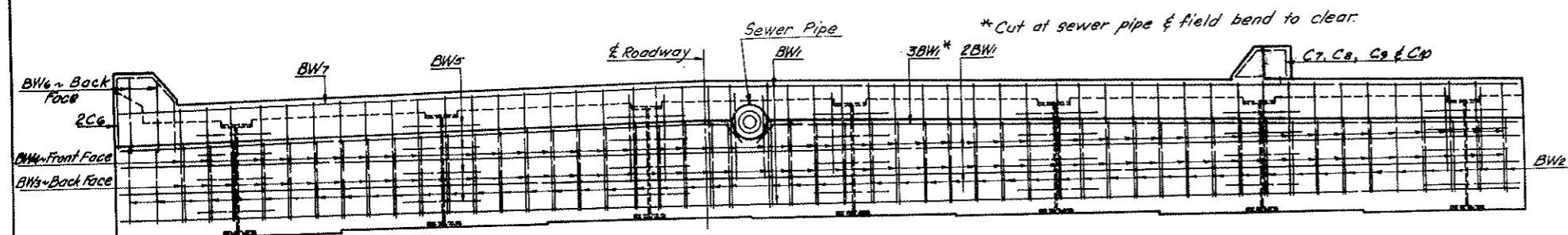


TAPERED CURB DETAIL

(Sidewalk Side Only)

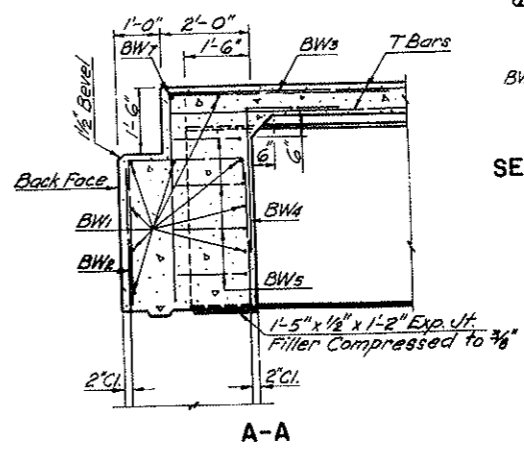


SEWER DETAILS @ ENDWALL



ENDWALL ELEVATION

(Abutment No. 1 Shown)



A-A

QUANTITIES	
Class AAB-3 Concrete (Slab)	423.7 C.Y.
Class AAB-3 Concrete (Rail & Path)	16.08 C.Y.
Main Reinforcing Steel	56,425 Lbs.
Structural Steel A36	255 Lbs.

Railing and end post quantities included.

HEART RIVER BRIDGE

SLAB & ENDWALL DETAILS