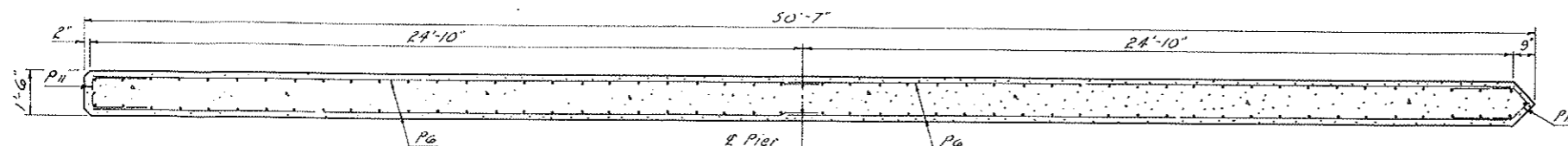
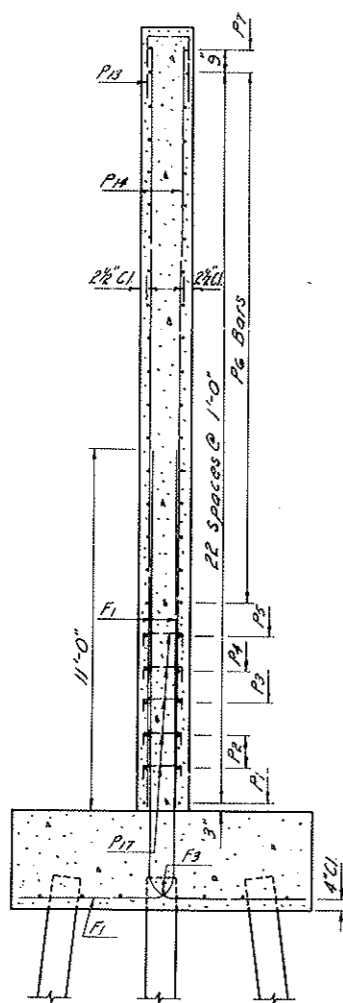


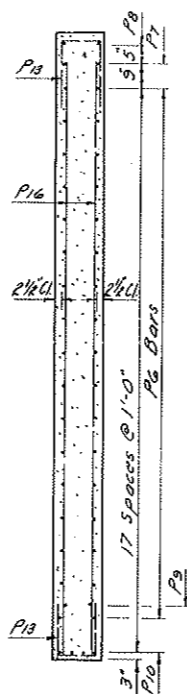
FED. ROAD DIST. NO.	STATE	PROJ. NO.	SHEET NO.	TOTAL SHEETS
8	N. D.	BRS-1-80691069	19	



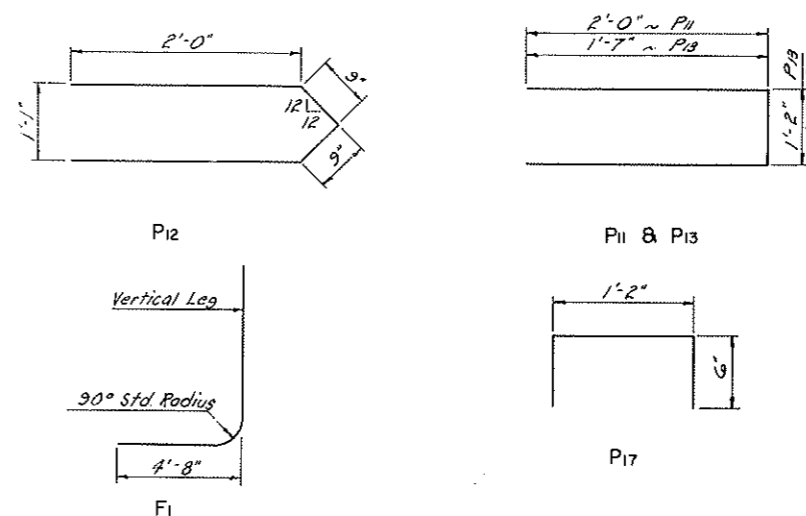
A-A



B-B

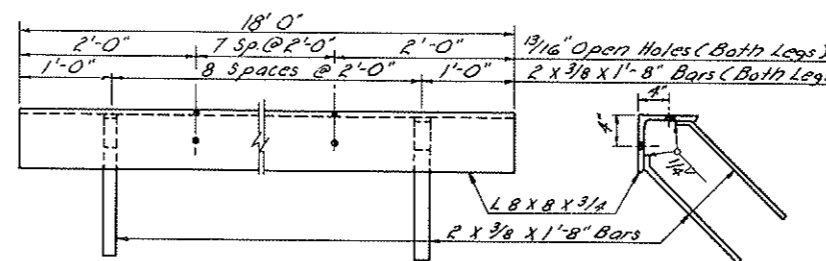


C-C



BENT BAR DETAILS

Dimensions shown are out to out



ICE NOSE ANGLE

BAR LIST (ONE PIER)						
MARK	NUMBER	SIZE	LENGTH	SHAPE	UNIT WT.	
F1	100	9	18'-2"	Bent		
F2	12	6	14'-6"	Str.		
F3	6	6	3'-8"	"		
P1	4	6	14'-2"	Str.		
P2	8	4	14'-2"	"		
P3	4	4	14'-6"	"		
P4	4	4	15'-6"	"		
P5	4	4	12'-6"	"		
P6	68	4	23'-6"	"		
P7	4	6	25'-9"	"		
P8	2	6	22'-9"	"		
P9	4	11	10'-0"	"		
P10	4	9	26'-8"	"		
P11	34	5	3'-1"	Bent		
P12	23	5	3'-6"	"		
P13	70	5	4'-8"	"		
P14	62	5	23'-0"	Str.		
P15	4	5	19'-3"	"		
P16	38	5	18'-0"	"		
P17	30	4	2'-2"	Bent		
SR1*	1	4	3'-8"	Str.		
SR2*	1	5	4'-0"	"		
SR3*	1	6	4'-6"	"		
SR4*	1	7	5'-0"	"		
SR5*	1	8	5'-4"	"		

* Sample replacement bar to be applied to bar from which 2'-0" sample has been cut. Furnish only one set for the entire bridge. This is not a pay item and shall be included in the unit price bid for reinforcing steel.

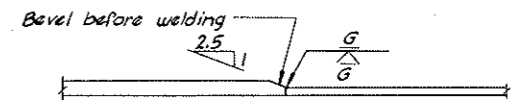
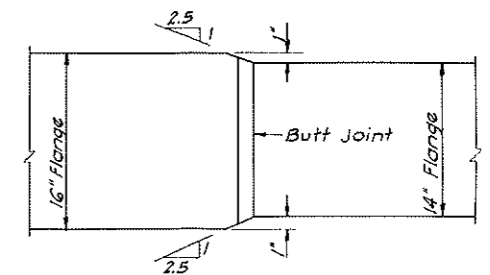
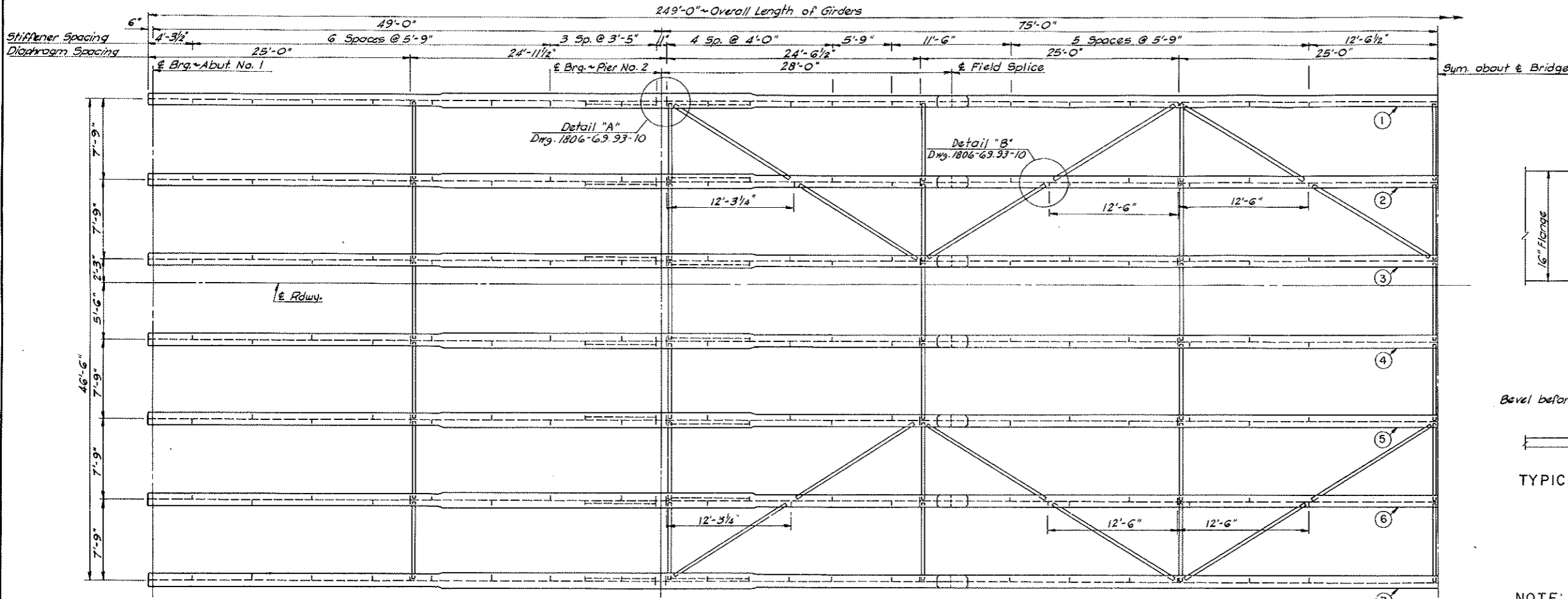
QUANTITIES (ONE PIER)	
Class A-1 Concrete	902 CY
Reinforcing Steel	16,741 LB
Structural Steel (A36)	777 LB
Filing (See Layout)	
Excavation (See Layout)	

HEART RIVER BRIDGE

PIER DETAILS

CHECKED BY: LLS
 MADE BY: LLS
 CHECKED BY: LLS
 MADE BY: LLS
 QUANTITIES CHECKED BY: LLS
 MADE BY: LLS

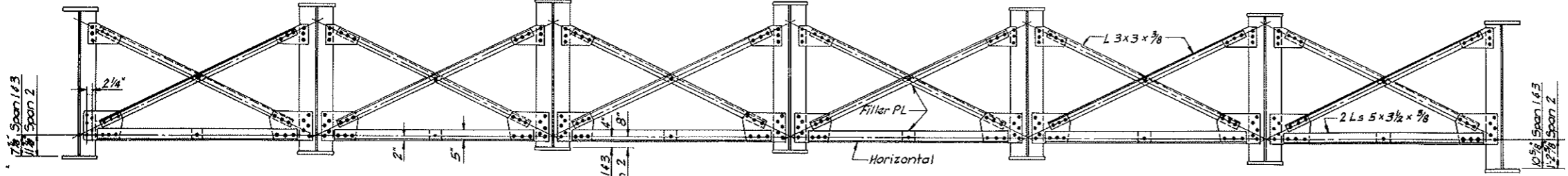
FED. ROAD DIST. NO.	STATE	PROJ. NO.	SHEET NO.	TOTAL SHEETS
8	N. D.	BRS-1-906(5)069	20	



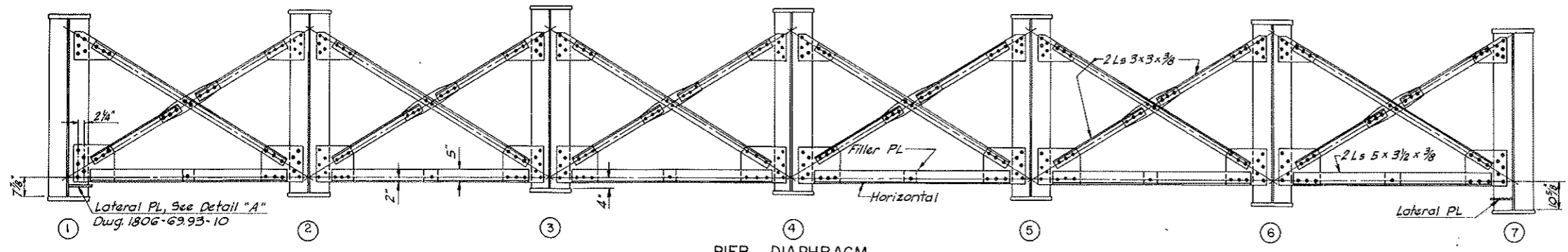
TYPICAL SHOP FLANGE SPLICE
Top Flange Shown

NOTE:
All gusset PL's to be 3/8" thick.
For location of lateral PL's, see steel layout and Details "A" & "B" on Dwg. 1806-69.93-10.

STEEL LAYOUT



END & CENTER SPANS DIAPHRAGMS



PIER DIAPHRAGM

QUANTITIES	
See Dwg. 1806-69.93-10	
HEART RIVER BRIDGE	
WELDED GIRDER	
DETAILS	